



Vendor: Cisco

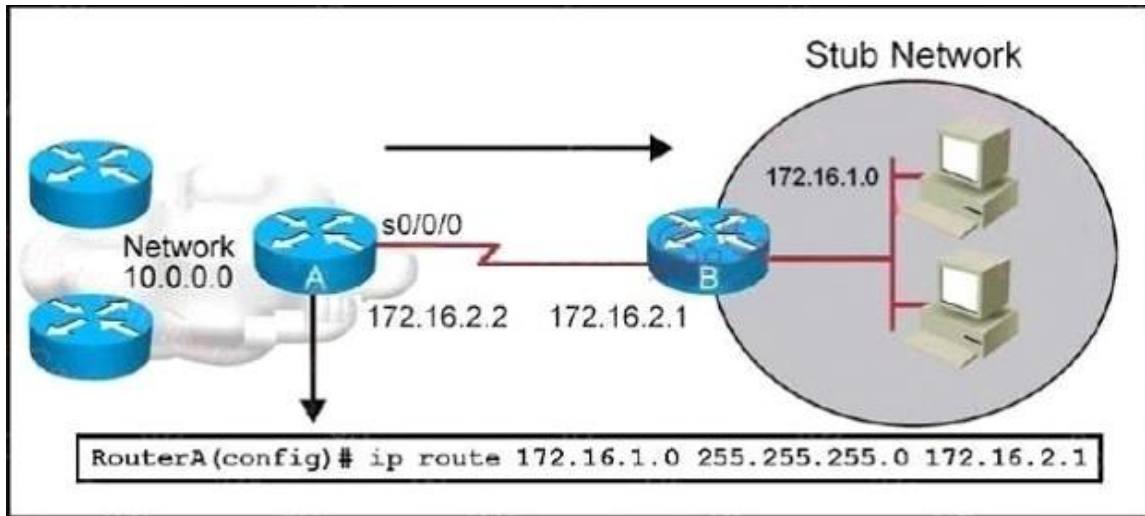
Exam Code: 100-105

**Exam Name: Interconnecting Cisco Networking Devices Part
1 v3.0 (ICND1)**

Version: Demo

QUESTION 1

Refer to the exhibit. Which statement is correct regarding the configuration shown?

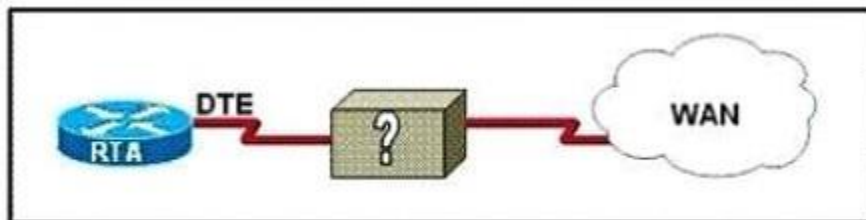


- A. This will not work as the subnet mask on serial interfaces must be /30.
- B. What is shown as being configured would be considered a default route.
- C. This configuration creates a bidirectional path between RouterA and RouterB.
- D. The command ip route 172.16.1.0 255.255.255.0 s0/0/0 would provide similar routing functionality.

Correct Answer: D

QUESTION 2

Refer to the exhibit. The network administrator must complete the connection between the RTA of the XYZ Company and the service provider. To accomplish this task, which two devices could be installed at the customer site to provide a connection through the local loop to the central office of the provider? (Choose two.)



- A. WAN switch
- B. PVC
- C. ATM switch
- D. multiplexer
- E. CSU/DSU
- F. modem

Correct Answer: EF

QUESTION 3

Regarding the extended ping command, which of the statements below are true? (Choose three)

- A. The extended ping command is supported from user EXEC mode.
- B. The extended ping command is available from privileged EXEC mode.
- C. With the extended ping command you can specify the TCP and UDP port to be pinged.
- D. With the extended ping command you can specify the timeout value.
- E. With the extended ping command you can specify the datagram size.

Correct Answer: BDE

QUESTION 4

Which of the following are found in a TCP header, but not in a UDP header? (Choose three.)

- A. sequence number
- B. acknowledgment number
- C. source port
- D. destination port
- E. window size
- F. checksum

Correct Answer: ABE

QUESTION 5

Which Layer 1 devices can be used to enlarge the area covered by a single LAN segment? (Choose two.)

- A. switch
- B. router
- C. NIC
- D. hub
- E. repeater
- F. RJ-45 transceiver

Correct Answer: DE

QUESTION 6

In which situation would the use of a static route be appropriate?

- A. To configure a route to the first Layer 3 device on the network segment.
- B. To configure a route from an ISP router into a corporate network.
- C. To configure a route when the administrative distance of the current routing protocol is too low.
- D. To reach a network is more than 15 hops away.
- E. To provide access to the Internet for enterprise hosts.

Correct Answer: B

QUESTION 7

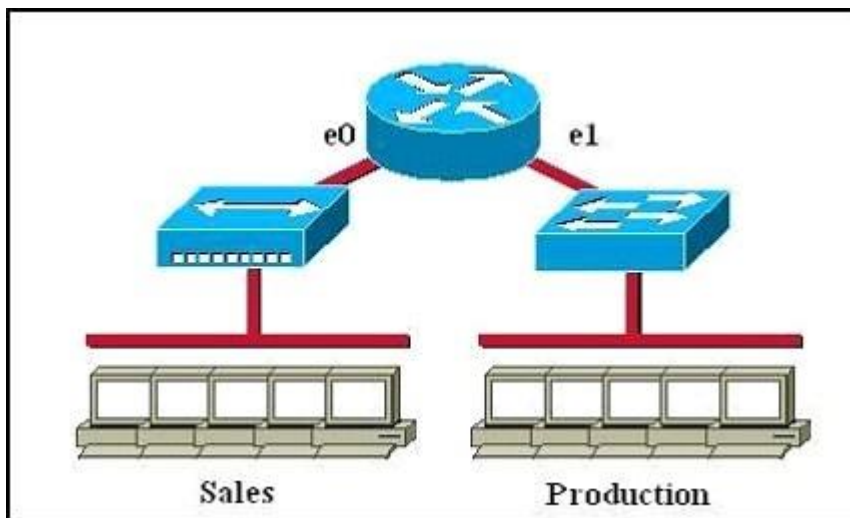
If NVRAM lacks boot system commands, where does the router look for the Cisco IOS by default?

- A. ROM
- B. RAM
- C. Flash
- D. bootstrap
- E. startup-config

Correct Answer: C

QUESTION 8

Which of the following statements describe the network shown in the graphic? (Choose two.)



- A. There are two broadcast domains in the network.
- B. There are four broadcast domains in the network.
- C. There are six broadcast domains in the network.
- D. There are four collision domains in the network.
- E. There are five collision domains in the network.
- F. There are seven collision domains in the network.

Correct Answer: AF

QUESTION 9

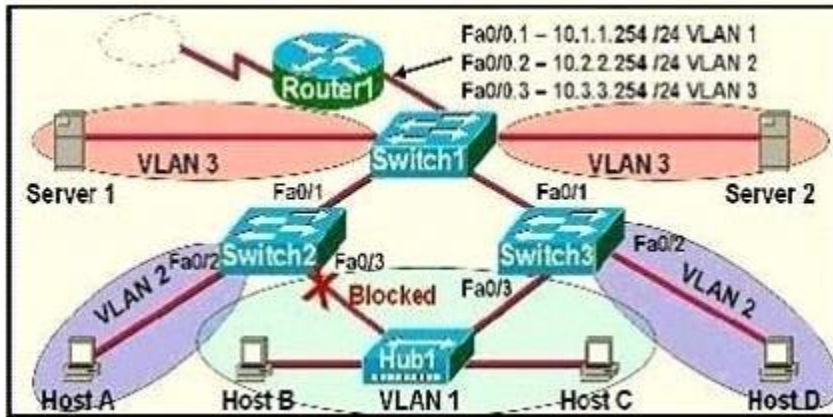
How can an administrator determine if a router has been configured when it is first powered up?

- A. A configured router prompts for a password.
- B. A configured router goes to the privileged mode prompt.
- C. An unconfigured router goes into the setup dialog.
- D. An unconfigured router goes to the enable mode prompt.

Correct Answer: C

QUESTION 10

Which statement is correct about the internetwork shown in the diagram?



- A. Switch 2 is the root bridge.
- B. Spanning Tree is not running.
- C. Host D and Server 1 are in the same network.
- D. No collisions can occur in traffic between Host B and Host C.
- E. If Fa0/0 is down on Router 1, Host A cannot access Server 1.
- F. If Fa0/1 is down on Switch 3, Host C cannot access Server 2.

Correct Answer: E

QUESTION 11

What is the default configuration register setting on most Cisco routers?

- A. 0x2210
- B. 0x2104
- C. 0x2102
- D. 0x2012
- E. 0x2142

Correct Answer: C

QUESTION 12

Assuming a subnet mask of 255.255.248.0, three of the following addresses are valid host addresses. Which are these addresses? (Choose three.)

- A. 172.16.9.0
- B. 172.16.8.0
- C. 172.16.31.0
- D. 172.16.20.0

Correct Answer: ACD

QUESTION 13

Refer to the exhibit. Which statement is correct regarding the results shown for the show interface s0/0/0 command?

```
RouterA# show interface s0/0/0
Serial0/0/0 is administratively down, line protocol is down
  Hardware is GT96K Serial
  Internet address is 10.12.12.1/28
  MTU 1500 bytes, BW 1544 Kbit, DLY 20000 usec,
    reliability 255/255, txload 1/255, rxload 1/255
  Encapsulation HDLC, loopback not set
  Keepalive set (10 sec)
  Last input never, output 00:00:14, output hang never
  Last clearing of "show interface" counters 5d15h
  Input queue: 0/75/0/0 (size/max/drops/flushes); Total output drops: 81071
  Queueing strategy: fifo
  Output queue: 0/40 (size/max)
  5 minute input rate 0 bits/sec, 0 packets/sec
  5 minute output rate 0 bits/sec, 0 packets/sec
    0 packets input, 0 bytes, 0 no buffer
  Received 0 broadcasts, 0 runts, 0 giants, 0 throttles
  0 input errors, 0 CRC, 0 frame, 0 overrun, 0 ignored, 0 abort
  145 packets output, 5084 bytes, 0 underruns
  0 output errors, 0 collisions, 4 interface resets
  0 output buffer failures, 0 output buffers swapped out
  0 carrier transitions
  DCD=down DSR=up DTR=down RTS=down CTS=down
```

- A. The subnet mask for this interface is 255.255.255.248.
- B. The subnet mask for this interface is 255.255.255.252.
- C. The IP address that is configured on s0/0/0 is a public address.
- D. This interface can be enabled by issuing a no shutdown command.
- E. The default encapsulation protocol for a Cisco serial interface is PPP.

Correct Answer: D

QUESTION 14

Which of the following commands enables a network administrator to verify the application layer connectivity between source and destination?

- A. ping
- B. telnet
- C. traceroute
- D. verify
- E. trace

Correct Answer: B

QUESTION 15

When you power up a Cisco router, in what memory is the start-up configuration normally stored in?

- A. RAM

- B. ROM
- C. FLASH
- D. NVRAM

Correct Answer: D

QUESTION 16

An administrator issues the show ip interface s0/0 command and the output displays that interface Serial0/0 is up, line protocol is up. What does "line protocol is up" specifically indicate about the interface?

- A. The cable is attached properly.
- B. CDP has discovered the connected device.
- C. Keepalives are being received on the interface.
- D. A carrier detect signal has been received from the connected device.
- E. IP is correctly configured on the interface.

Correct Answer: C

QUESTION 17

WAN data link encapsulation types include which of the following? (Choose two.)

- A. T1
- B. Frame Relay
- C. DSL
- D. PPP
- E. ISDN

Correct Answer: BD

QUESTION 18

Which transport layer protocol is best suited for the transport of VoIP data?

- A. RIP
- B. UDP
- C. TCP
- D. OSPF
- E. HTTP

Correct Answer: B

QUESTION 19

Which protocol provides best-effort delivery of user data in a network?

- A. TCP
- B. MAC
- C. IP
- D. ARP

E. SMTP

Correct Answer: C

QUESTION 20

When troubleshooting a LAN interface operating in full duplex mode, which error condition can be immediately ruled out?

- A. giants
- B. no buffers
- C. collisions
- D. ignored
- E. dribble condition

Correct Answer: C