



Oracle

Exam 1z0-071

Oracle Database 12c SQL

Version: 6.0

[Total Questions: 73]

Question No : 1

Examine the structure of the invoice table.

Name	Null?	Type
INV_NO	NOT NULL	NUMBER(3)
INV_DATE		DATE
INV_AMT		NUMBER(10,2)

Which two SQL statements would execute successfully?

A)

```
SELECT inv_no,NVL2(inv_date,'Pending','Incomplete')
FROM invoice;
```

B)

```
SELECT inv_no,NVL2(inv_amt,inv_date,'Not Available')
FROM invoice;
```

C)

```
SELECT inv_no,NVL2(inv_date,sysdate-inv_date,sysdate)
FROM invoice;
```

D)

```
SELECT inv_no,NVL2(inv_amt,inv_amt*.25,'Not Available')
FROM invoice;
```

- A. Option A
- B. Option B
- C. Option C
- D. Option D

Answer: C

Question No : 2

Which statement is true regarding the INTERSECT operator?

- A. It ignores NULL values
- B. The number of columns and data types must be identical for all SELECT statements in the query
- C. The names of columns in all SELECT statements must be identical
- D. Reversing the order of the intersected tables the result

Answer: B

Explanation:

INTERSECT Returns only the rows that occur in both queries' result sets, sorting them and removing duplicates.

The columns in the queries that make up a compound query can have different names, but the output result set will use the names of the columns in the first query.

Question No : 3

Which task can be performed by using a single Data Manipulation Language (DML) statement?

- A. adding a column constraint when inserting a row into a table
- B. adding a column with a default value when inserting a row into a table
- C. removing all data only from one single column on which a unique constraint is defined
- D. removing all data only from one single column on which a primary key constraint is defined

Answer: D

Question No : 4

You want to display the date for the first Monday of the next month and issue the following command:

```
SQL>SELECT TO_CHAR(NEXT_DAY(LAST_DAY(SYSDATE),'MON'), 'dd "is the first Monday for"fmmonth rrrr') FROM DUAL;
```

What is the outcome?

- A. It executes successfully and returns the correct result.
- B. It executes successfully but does not return the correct result.
- C. It generates an error because TO_CHAR should be replaced with TO_DATE.
- D. It generates an error because rrrr should be replaced by rr in the format string.
- E. It generates an error because fm and double quotation marks should not be used in the format string.

Answer: A

Explanation:

- NEXT_DAY(date, 'char'): Finds the date of the next specified day of the week ('char') following date. The value of char may be a number representing a day or a character string.
 - LAST_DAY(date): Finds the date of the last day of the month that contains date
- The second innermost function is evaluated next. TO_CHAR('28-OCT-2009', 'fmMonth') converts the given date based on the Month format mask and returns the character string October. The fm modifier trims trailing blank spaces from the name of the month.

Question No : 5

Which statements are true? (Choose all that apply.)

- A. The data dictionary is created and maintained by the database administrator.
- B. The data dictionary views can consist of joins of dictionary base tables and user-defined tables.
- C. The usernames of all the users including the database administrators are stored in the data dictionary.
- D. The USER_CONS_COLUMNS view should be queried to find the names of the columns to which a constraint applies.
- E. Both USER_OBJECTS and CAT views provide the same information about all the objects that are owned by the user.
- F. Views with the same name but different prefixes, such as DBA, ALL and USER, use the same base tables from the data dictionary

Answer: C,D,F

Question No : 6

Examine the business rule:

Each student can take up multiple projects and each project can have multiple students.

You need to design an Entity Relationship Model (ERD) for optimal data storage and allow for generating reports in this format:

```
STUDENT_ID FIRST_NAME LAST_NAME PROJECT_ID PROJECT_NAME  
PROJECT_TASK
```

Which two statements are true in this scenario?

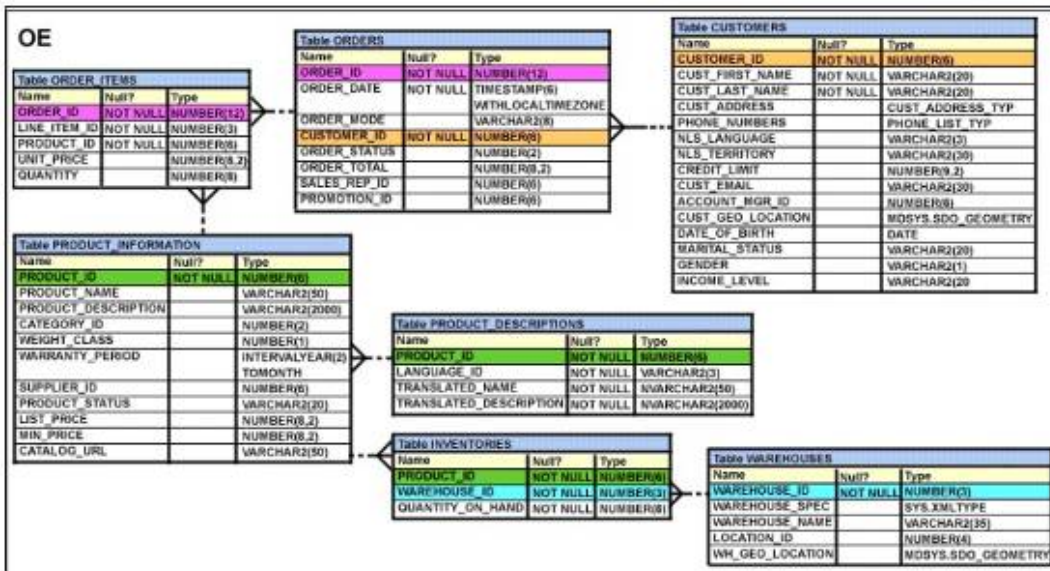
- A. The ERD must have a 1:M relationship between the students and projects entities.
- B. The ERD must have a M:M relationship between the students and projects entities that must be resolved into 1:M relationships.
- C. STUDENT_ID must be the primary key in the STUDENTS entity and foreign key in the projects entity.
- D. PROJECT_ID must be the primary key in the projects entity and foreign key in the STUDENTS entity.
- E. An associative table must be created with a composite key of STUDENT_ID and PROJECT_ID; which is the foreign key linked to the STUDENTS and PROJECTS entities.

Answer: D,E

Question No : 7

View the Exhibit and examine the data in ORDERS and ORDER_ITEMS tables.

You need to create a view that displays the ORDER ID, ORDER_DATE, and the total number of items in each order.



Which CREATE VIEW statement would create the view successfully?

- A.** CREATE OR REPLACE VIEW ord_vu (order_id,order_date)
AS SELECT o.order_id, o.order_date, COUNT(i.line_item_id)
"NO OF ITEMS"
FROM orders o JOIN order_items i
ON (o.order_id = i.order_id)
GROUP BY o.order_id,o.order_date;
- B.** CREATE OR REPLACE VIEW ord_vu
AS SELECT o.order_id, o.order_date, COUNT(i.line_item_id)
"NO OF ITEMS"
FROM orders o JOIN order_items i
ON (o.order_id = i.order_id)
GROUP BY o.order_id,o.order_date;
- C.** CREATE OR REPLACE VIEW ord_vu
AS SELECT o.order_id, o.order_date, COUNT(i.line_item_id)
FROM orders o JOIN order_items i ON (o.order_id = i.order_id)
GROUP BY o.order_id,o.order_date;
- D.** CREATE OR REPLACE VIEW ord_vu
AS SELECT o.order_id, o.order_date, COUNT(i.line_item_id)||' NO OF ITEMS'
FROM orders o JOIN order_items i
ON (o.order_id = i.order_id)
GROUP BY o.order_id,o.order_date
WITH CHECK OPTION;

Answer: B

Question No : 8

The following are the steps for a correlated subquery, listed in random order:

- 1) The WHERE clause of the outer query is evaluated.
- 2) The candidate row is fetched from the table specified in the outer query.
- 3) The procedure is repeated for the subsequent rows of the table, till all the rows are processed.
- 4) Rows are returned by the inner query, after being evaluated with the value from the candidate row in the outer query. Identify the option that contains the steps in the correct sequence in which the Oracle server evaluates a correlated subquery.

- A. 4,2,1,3
- B. 4,1,2,3
- C. 2,4,1,3
- D. 2,1,4,3

Answer: C

Question No : 9

Which three tasks can be performed using SQL functions built into Oracle Database?
(Choose three.)

- A. Combining more than two columns or expressions into a single column in the output
- B. Displaying a date in a nondefault format
- C. Substituting a character string in a text expression with a specified string
- D. Finding the number of characters in an expression

Answer: B,C,D

Question No : 10

View the Exhibits and examine the structures of the costs and promotions tables?

- 1.

Table COSTS		
Name	Null?	Type
PROD_ID	NOT NULL	NUMBER
TIME_ID	NOT NULL	DATE
PROMO_ID	NOT NULL	NUMBER
CHANNEL_ID	NOT NULL	NUMBER
UNIT_COST	NOT NULL	NUMBER(10,2)
UNIT_PRICE	NOT NULL	NUMBER(10,2)

2.

Table PROMOTIONS		
Name	Null?	Type
PROMO_ID	NOT NULL	NUMBER(6)
PROMO_NAME	NOT NULL	VARCHAR2(30)
PROMO_SUBCATEGORY	NOT NULL	VARCHAR2(30)
PROMO_SUBCATEGORY_ID	NOT NULL	NUMBER
PROMO_CATEGORY	NOT NULL	VARCHAR2(30)
PROMO_CATEGORY_ID	NOT NULL	NUMBER
PROMO_COST	NOT NULL	NUMBER(10,2)
PROMO_BEGIN_DATE	NOT NULL	DATE
PROMO_END_DATE	NOT NULL	DATE

Evaluate the following SQL statement:

```
SQL> SELECT prod_id FROM costs
WHERE promo_id IN (SELECT promo_id FROM promotions
WHERE promo_cost < ALL
(SELECT MAX(promo_cost) FROM promotions
GROUP BY (promo_end_datepromo_
begin_date)));
```

What would be the outcome of the above SQL statement?

- A. It displays prod IDs in the promo with the lowest cost.
- B. It displays prod IDs in the promos with the lowest cost in the same time interval.
- C. It displays prod IDs in the promos with the highest cost in the same time interval.
- D. It displays prod IDs in the promos with cost less than the highest cost in the same time interval.

Answer: D

Question No : 11

Which two statements are true about sequences created in a single instance database?
(Choose two.)

- A. CURRVAL is used to refer to the last sequence number that has been generated
- B. DELETE <sequencename> would remove a sequence from the database
- C. The numbers generated by a sequence can be used only for one table
- D. When the MAXVALUE limit for a sequence is reached, you can increase the MAXVALUE limit by using the ALTER SEQUENCE statement
- E. When a database instance shuts down abnormally, the sequence numbers that have been cached but not used would be available once again when the database instance is restarted

Answer: A,D

Explanation:

Gaps in the Sequence

Although sequence generators issue sequential numbers without gaps, this action occurs independent of a commit or rollback. Therefore, if you roll back a statement containing a sequence, the number is lost.

Another event that can cause gaps in the sequence is a system crash. If the sequence caches values in memory, those values are lost if the system crashes.

Because sequences are not tied directly to tables, the same sequence can be used for multiple tables.

However, if you do so, each table can contain gaps in the sequential numbers.

Modifying a Sequence

If you reach the MAXVALUE limit for your sequence, no additional values from the sequence are allocated and you will receive an error indicating that the sequence exceeds the MAXVALUE. To continue to use the sequence, you can modify it by using the ALTER SEQUENCE statement

To remove a sequence, use the DROP statement:

DROP SEQUENCE dept_deptid_seq;

Question No : 12

View the Exhibit and examine the descriptions of the DEPT and LOCATIONS tables.

DEPT			
Name	Null?	Type	
DEPARTMENT_ID		NUMBER(4)	
DEPARTMENT_NAME	NOT NULL	VARCHAR2(30)	
MANAGER_ID		NUMBER(6)	
LOCATION_ID		NUMBER(4)	
CITY		VARCHAR2(30)	

LOCATIONS			
Name	Null?	Type	
LOCATION_ID	NOT NULL	NUMBER(4)	
STREET_ADDRESS		VARCHAR2(40)	
POSTAL_CODE		VARCHAR2(12)	
CITY	NOT NULL	VARCHAR2(30)	
STATE_PROVINCE		VARCHAR2(25)	
COUNTRY_ID		CHAR(2)	

You want to update the CITY column of the DEPT table for all the rows with the corresponding value in the CITY column of the LOCATIONS table for each department.

Which SQL statement would you execute to accomplish the task?

- A.** UPDATE dept d
SET city = ANY (SELECT city FROM locations l);
- B.** UPDATE dept d
SET city = (SELECT city FROM locations l)
WHERE d.location_id = l.location_id;
- C.** UPDATE dept d
SET city = (SELECT city
FROM locations l
WHERE d.location_id = l.location_id);
- D.** UPDATE dept d
SET city = ALL (SELECT city
FROM locations l
WHERE d.location_id = l.location_id);

Answer: C

Question No : 13

The BOOKS_TRANSACTIONStable exists in your database.

Examine the SQL statement:

SQL>SELECT * FROM books_transactionsORDER BY 3;

What is the outcome on execution?

- A. The execution fails unless the numeral 3 in the order by clause is replaced by a column name,
- B. Rows are displayed in the order that they are stored in the table only for the three rows with the lowest values in the key column.
- C. Rows are displayed in the order that they are stored in the table only for the first three rows.
- D. Rows are displayed sorted in ascending order of the values in the third column in the table.

Answer: C

Question No : 14

Which statement is true regarding the default behavior of the ORDER BY clause?

- A. In a character sort, the values are case-sensitive
- B. NULL values are not considered at all by the sort operation
- C. Only those columns that are specified in the SELECT list can be used in the ORDER BY clause
- D. Numeric values are displayed from the maximum to the minimum value if they have decimal positions

Answer: A

Explanation:

Character Strings and Dates

Character strings and date values are enclosed with single quotation marks.

Character values are case-sensitive and date values are format-sensitive.

The default date display format is DD-MON-RR.

Question No : 15

Which two statements are true about Data Manipulation Language (DML) statements?

- A. An INSERT INTO...VALUES... statement can add multiple rows per execution to a table.
- B. An UPDATE...SET... statement can modify multiple rows based on multiple conditions

on a table.

C. A DELETE FROM statement can remove rows based on only a single condition on a table.

D. An INSERT INTO...VALUES..... statement can add a single row based on multiple conditions on a table.

E. A DELETE FROM..... statement can remove multiple rows based on multiple conditions on a table.

F. An UPDATE...SET.... statement can modify multiple rows based on only a single condition on a table.

Answer: A,C

Question No : 16

View the Exhibit and examine the structure of the stores table.

STORES table		
Name	Null	Type
STORE_ID		NUMBER
NAME		VARCHAR2 (100)
ADDRESS		VARCHAR2 (200)
CITY		VARCHAR2 (100)
COUNTRY		VARCHAR2 (100)
START_DATE		DATE
END_DATE		DATE
PROPERTY_PRICE		NUMBER

You want to display the name of the store along with the address, START_DATE, PROPERTV_PRICE, and the projected property price, which is 115% of the property price. The stores displayed must have START_DATE in the range of 36 months starting from 01-Jan-2000 and above.

Which SQL statement would get the desired output?

A)

```
SELECT name, concat(address||', '||city||', ',country) AS full_address,
start_date,
property_price, property_price*115/100
FROM stores
WHERE MONTHS_BETWEEN(start_date,'01-JAN-2000') <= 36;
```

B)

```
SELECT name, concat(address||', '||city||', ',country) AS full_address,
start_date,
property_price, property_price*115/100
FROM stores
WHERE TO_NUMBER(start_date-TO_DATE('01-JAN-2000','DD-MON-RRRR')) <= 36;
```

C)

```
SELECT name, address||', '||city||', '||country AS full_address, start_date,  
property_price, property_price*15/100  
FROM stores  
WHERE MONTHS_BETWEEN(start_date,TO_DATE('01-JAN-2000','DD-MON-RRRR')) <= 36;
```

D)

```
SELECT name, concat(address||', '||city||', ',country) AS full_address,  
start_date,  
property_price, property_price*115/100  
FROM stores  
WHERE MONTHS_BETWEEN(start_date,TO_DATE('01-JAN-2000','DD-MON-RRRR')) <= 36;
```

- A. Option A
- B. Option B
- C. Option C
- D. Option D

Answer: C

Question No : 17

Evaluate the following two queries:

```
SQL> SELECT cust_last_name, cust_city  
FROM customers  
WHERE cust_credit_limit IN (1000, 2000, 3000);  
  
SQL> SELECT cust_last_name, cust_city  
FROM customers  
WHERE cust_credit_limit = 1000 OR cust_credit_limit = 2000 OR  
cust_credit_limit = 3000;
```

Which statement is true regarding the above two queries?

- A. Performance would improve query 2 only if there are null values in the CUST__CREDIT__LIMIT column.
- B. There would be no change in performance.
- C. Performance would degrade in query 2.
- D. Performance would improve in query 2.

Answer: B

Question No : 18

The first DROP operation is performed on PRODUCTS table using the following command:

DROP TABLE products PURGE;

Then you performed the FLASHBACK operation by using the following command:

FLASHBACK TABLE products TO BEFORE DROP;

Which statement describes the outcome of the FLASHBACK command?

- A. It recovers only the table structure.
- B. It recovers the table structure, data, and the indexes.
- C. It recovers the table structure and data but not the related indexes.
- D. It is not possible to recover the table structure, data, or the related indexes.

Answer: D

Question No : 19

View the Exhibit and examine the data in ORDERS_MASTER and MONTHLY_ORDERS tables.

ORDERS_MASTER	
ORDER_ID	ORDER_TOTAL
1	1000
2	2000
3	3000
4	

MONTHLY_ORDERS	
ORDER_ID	ORDER_TOTAL
2	2500
3	

Evaluate the following MERGE statement:

```
MERGE INTO orders_master o
USING monthly_orders m
ON (o.order_id = m.order_id)
WHEN MATCHED THEN
UPDATE SET o.order_total = m.order_total
DELETE WHERE (m.order_total IS NULL)
WHEN NOT MATCHED THEN
INSERT VALUES (m.order_id, m.order_total);
```

What would be the outcome of the above statement?

- A. The ORDERS_MASTER table would contain the ORDERJDs 1 and 2.
- B. The ORDERS_MASTER table would contain the ORDERJDs 1,2 and 3.
- C. The ORDERS_MASTER table would contain the ORDERJDs 1,2 and 4.
- D. The ORDERS MASTER table would contain the ORDER IDs 1,2,3 and 4.

Answer: C

Question No : 20

Which two statements are true regarding roles? (Choose two.)

- A. A role can be granted to itself.
- B. A role can be granted to PUBLIC.
- C. A user can be granted only one role at any point of time.
- D. The REVOKE command can be used to remove privileges but not roles from other users.
- E. Roles are named groups of related privileges that can be granted to users or other roles.

Answer: B,E

Question No : 21