



Oracle

Exam 1z0-241

PeopleSoft Application Developer I: PeopleTools & PeopleCode

Version: 5.0

[Total Questions: 191]

Topic 1, A

A

Question No : 1 - (Topic 1)

You write a PeopleCode program that checks whether the user is selecting an existing search key value on the Search page or creating a new search key value. Which system variable do you use?

- A. %Add
- B. &Add
- C. %Mode
- D. &Mode
- E. %Search
- F. &Search

Answer: C

Question No : 2 - (Topic 1)

Which three statements are true regarding Query Profile? (Choose three.)

- A. The Query Profiles page enables users to run existing queries and create new ones.
- B. The Query Profiles page enables you to specify the type of access that users have when they work with PeopleSoft Query.
- C. By default, the query profile does not give users access to all PeopleSoft Query features, even if you gave them access to PeopleSoft Query.
- D. If a user has more than one permission list, PeopleSoft Query uses the highest time-out value as defined in the Time-out Minutes section of the user's permission lists.
- E. The Query Profiles page enables you to restrict the types of queries that users can create, limit the number of rows returned, or set the time that a query can run before it times out.
- F. By default, the Only Allowed to Run Queries option on the Query Profiles page is selected, and each permission list that is granted to a user or role has the possibility to have capabilities added.

Answer: B,D,E

Question No : 3 - (Topic 1)

Examine this PeopleCode snippet:

```
class OCP_ROWSET extends Rowset;
```

```
property integer FilledRowCount get;
```

```
method OCP_ROWSET(&strRecName As string, &strDataFld As  
string, &strGetOrCreate As string);
```

```
method InsertRow(&iRow As integer) Returns boolean;
```

Select the correct statements. (Choose all that apply.)

- A. OCP_ROWSET is the constructor method for the OCP_ROWSET class.
- B. Executing the RO_ROWSET method instantiates an object of the OCP_ROWSET class.
- C. The OCP_ROWSET method runs automatically whenever an object is instantiated using the OCP_ROWSET class.
- D. The OCP_ROWSET method must initialize the ROWSET class.
- E. The OCP_ROWSET method is added to the ROWSET class, and, by extension, to any instances of the ROWSET class.

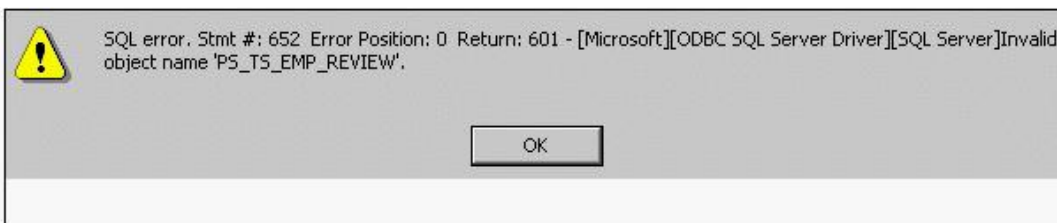
Answer: A,C,D

Question No : 4 - (Topic 1)

View the Exhibit.

You are testing an application that you just completed. You access the content reference and select a search key. When you click the Search button, you see the error shown in the image.

Select the next course of action.



- A. Remove the PS_TS_EMP_REVIEW field from the record definition.

- B. Run the Alter process for the PS_TS_EMP_REVIEW record definition.
- C. Run the Build process for the PS_TS_EMP_REVIEW record definition.
- D. Examine the record definition properties and manually create a BUILD script.
- E. Verify that you created and properly configured the PS_TS_EMP_REVIEW page.

Answer: C

Question No : 5 - (Topic 1)

Are parameters passed to user-defined internal and external PeopleCode functions by reference or by value?

- A. The first parameter is the input parameter, and the second parameter is output parameter.
- B. User-defined internal and external PeopleCode function parameters are always passed by value.
- C. User-defined internal and external PeopleCode function parameters are always passed by reference.
- D. User-defined internal and external PeopleCode function parameters can be passed as input or as output, depending on the function.
- E. User-defined internal and external PeopleCode function parameters can be passed by reference or by value, depending on the function.

Answer: C

Question No : 6 - (Topic 1)

Select the two rules about PeopleSoft prompt table mechanics. (Choose two.)

- A. The prompt matches fields based on name, data type, and length.
- B. The prompt automatically filters the rows based on higher-level key values in the buffer.
- C. The prompt selects the highest-level key on the prompt record definition unless the EFFDT field is present.
- D. The prompt automatically selects for the lowest-level key on the prompt record definition ignoring the EFFDT and EFF_STATUS fields.

Answer: B,D

Question No : 7 - (Topic 1)

Select the two characteristics of summary pages that set them apart from non-summary pages. (Choose two.)

- A. They are display-only.
- B. They contain only level zero.
- C. They typically contain no related fields.
- D. They reference one record definition.

Answer: A,C

Question No : 8 - (Topic 1)

Here is a partial list of events in the Component Processor flow.

1. SQL select
2. Search page
3. Record defaults
4. Add row to buffer
5. Standard system field edits
6. Wait for user interaction

What is the correct order?

- A. 1, 2, 3, 4, 5, 6
- B. 2, 1, 4, 3, 6, 5
- C. 6, 2, 1, 4, 3, 5
- D. 2, 1, 3, 4, 5, 6
- E. 2, 4, 5, 1, 3, 6

Answer: B

Question No : 9 - (Topic 1)

Select the three primary advantages of using the Message Catalog. (Choose three.)

- A. Messages are reusable.
- B. You can enter messages through a browser.

- C. Developers can secure messages through Definition Security.
- D. Developers can search for and use messages in Application Designer.
- E. Messages in the catalog are easier to translate in globalization situations.

Answer: A,B,E

Question No : 10 - (Topic 1)

View the Exhibits.

Examine the two pages and select the correct statement.

The image displays two screenshots of SAP user interface components. The top screenshot shows a table titled "Courses Completed" with columns for Course Code, Course Description, Course Type, and Session. The rows are numbered 1 through 11. Above the table, there is a "Student ID" field with the value "NNNNN" and a long alphanumeric string. The bottom screenshot shows a table titled "Experience" with columns for Skill, Description, and Proficiency. The rows are numbered 1 through 5. Above this table, there is also a "Student ID" field with the value "NNNNN" and a long alphanumeric string.

- A. You can group these pages in the same component.
- B. You cannot group these pages in the same component.

Answer: A

Question No : 11 - (Topic 1)

Select the four items that you can use as translate values for the COLOR field. (Choose four.)

- A. BLK
- B. W-02
- C. BRWN
- D. PURPL
- E. BLACK
- F. 1-BL

Answer: A,B,C,F

Question No : 12 - (Topic 1)

View the Exhibit.

Which two PeopleCode snippets contain syntax errors? (Choose two.)

1	<pre>If All(PSU_CRS_SESSN.START_DATE, PSU_CRS_SESSN.END_DATE) And PSU_CRS_SESSN.START_DATE > PSU_CRS_SESSN.END_DATE Then Error MsgGet(1040, 3, "Message Not Found") End-If;</pre>
2	<pre>If PSU_EMP_RVW_RVR.REVIEW_TYPE = "E" Then COMMENT Reviewer is an employee; COMMENT Disable REVIEWER_ID; PSU_EMP_RVW_RVR.REVIEWER_ID.Value = PSU_EMP_RVW_RVR.EMPLID; PSU_EMP_RVW_RVR.REVIEWER_ID.Enabled = False; End-If;</pre>
3	<pre>Local Message &request, &response; Local Row &Row; Local Rowset &Rowset;</pre>
4	<pre>Local Field &Crstype; &Crstype = GetField(PSU_COURSE_TBL.COURSE_TYPE); &Crstype.Value = "H"; &Crstype.Enabled = False;</pre>
5	<pre>&OLD_PRICE > &TOTAL_PRICE; &TOTAL_PRICE = &QTY_ORDERED * &PRICE; &GRAND_TOTAL = &GRAND_TOTAL + &TOTAL_PRICE - &OLD_PRICE;</pre>

- A. 1
- B. 2
- C. 3
- D. 4
- E. 5

Answer: B,E

Question No : 13 - (Topic 1)

View the Exhibit.

You begin to register a component using the registration wizard. Based on the values that appear in the dialog box, select the best course of action.

Will this component be accessed as target content or as a homepage pagelet?
 Target Content Homepage Pagelet

Portal Name: EMPLOYEE

Folder Name: PSU_EMPLOYEE

Content Reference Name: TS_EMP_REVIEW_GBL

Content Reference Label: Appraisals

Long Description (254 Character): Enter, modify, and view employee reviews

Sequence Number: 5 Product: PT

Template Name: DEFAULT_TEMPLATE

Object Owner Id:

Node Name: PSFT_TRN

Always use default local node?

Enter the base URI to be used when you click the "Open Selected" buttons. Example: http://localhost/psp/ps/

"Open" URI Base: http://eddpr40p1.us.oracle.com:8010/psp/T1B84801/

- A. Continue registering the component as it is.
- B. Stop the registration process to investigate why this component is already registered.
- C. Change the user-facing fields to mixed case and make them less technical and then continue registering the component.

Answer: A

Question No : 14 - (Topic 1)

Select the three tasks that you can perform using the Registration Wizard. (Choose three.)

- A. Add pages to existing components.
- B. Add components to existing menus.

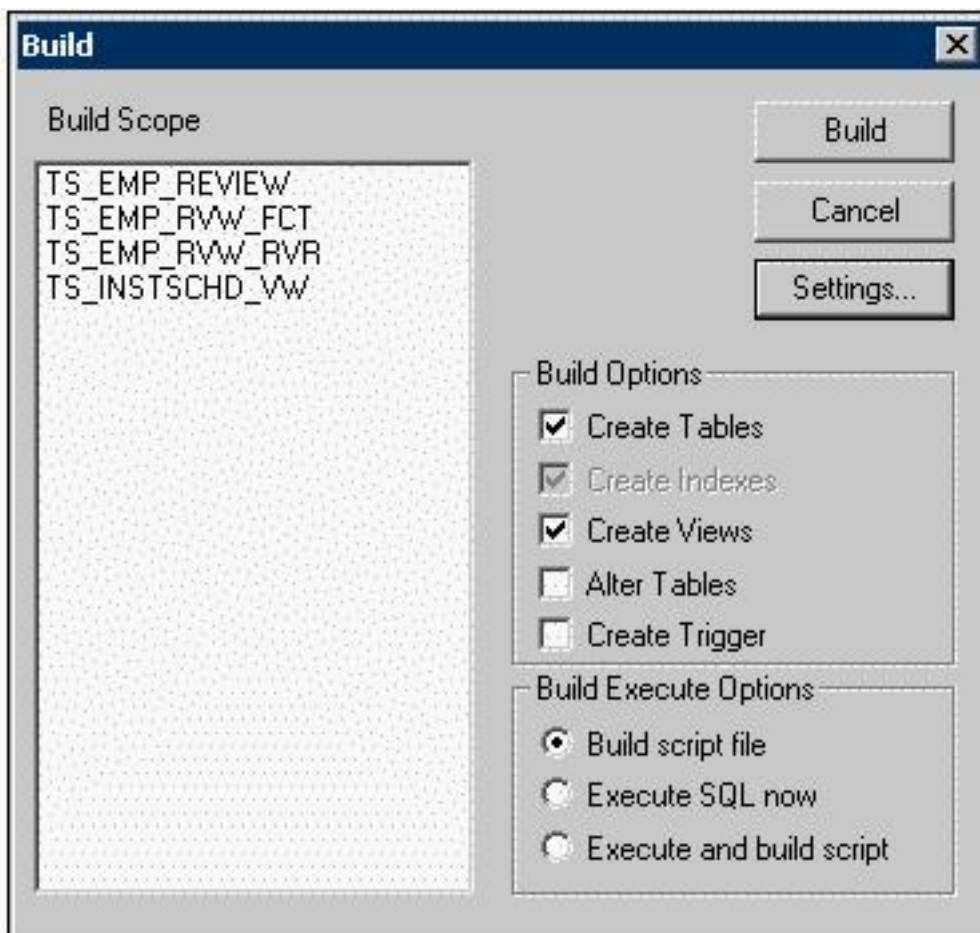
- C. Add components to a portal registry.
- D. Add components to a permission list.
- E. Create new menus and add components to the new menus.

Answer: B,C,D

Question No : 15 - (Topic 1)

View the Exhibit.

Based on this Build dialog box, select the two options that are true. (Choose two.)



- A. When you click the Build button, the TS_EMP tables are created.
- B. When you click the Build button, nothing happens to your database.
- C. When you click the Build button, the TS_EMP tables may lose existing data.
- D. When you click the Build button, the TS_INSTSCHED_VW view is created.
- E. When you click the Build button, Application Designer generates a script file.

Answer: B,E

Question No : 16 - (Topic 1)

What type of PeopleCode looping construct continues to loop as long as the logical_expression evaluates to TRUE?

- A. For
- B. While
- C. Do While
- D. Do Until
- E. Repeat-Until

Answer: B

Question No : 17 - (Topic 1)

View the Exhibit.

As the Component Processor loads a component, it executes PeopleCode programs according to buffer allocation rules.

Each row in the table represents a PeopleCode program and its associated definition, scroll level, and event.

In what order will the programs execute?

Program	Definition	Level	Event
A	Record	Level 0 Record	FieldDefault
B	Component	Level 0 Record	Rowlnit
C	Component	Level 0 Record	FieldDefault
D	Record	Level 1 Record	FieldDefault
E	Record	Level 1 Record	Rowlnit

- A. A, B, C, D, E
- B. A, D, E, B, C
- C. B, C, A, D, E
- D. A, C, D, B, E
- E. E, D, C, B, A

Answer: D

Question No : 18 - (Topic 1)

The Run Status column on the Process List page indicates the current state of a process.

Assume that the Process Scheduler server is running, which three statements are true regarding the Run Status column on the Process List page? (Choose three.)

- A.** Initiated status indicates that a PeopleSoft Process Scheduler Server has acknowledged the new request. At this time, PeopleSoft Process Scheduler validates the parameters that are associated with this request and submits the command line to start the process.
- B.** Queued status indicates that this process has successfully initiated the program and the program is running.
- C.** Pending status indicates that this item is waiting for a previous item in the job before PeopleSoft Process Scheduler releases this item. When the previous item has completed successfully, PeopleSoft Process Scheduler changes the status of the item to Queued.
- D.** Processing status indicates that PeopleSoft ProcessScheduler has successfully initiated the program, and that the program is running.
- E.** No Success status is same as the Error status, which indicates that the program that is associated with the process request encountered an error while processing transactions within the program.

Answer: A,C,D

Question No : 19 - (Topic 1)

For the Employee Expenses application, a PeopleCode program could be placed either on the EMPLOYEE record or on the EMP_EXPENSE component. You decide to place it on the component.

Which is a valid reason for choosing to place the program on the component instead of the record?

- A.** The program updates multiple database tables.
- B.** The program validates data across multiple records.
- C.** Component PeopleCode executes before record PeopleCode, so it is more efficient.
- D.** The record definition is used on several components, but this program should run only on this component.
- E.** The program initializes fields on the search page, and the search record is associated with the component.
- F.** The component contains several record definitions and you do not want to duplicate the code in each record.
- G.** Component PeopleCode is more reusable because component PeopleCode is available

for execution on other components.

Answer: D

Question No : 20 - (Topic 1)

Select three steps that you perform when you create a subrecord. (Choose three.)

- A. Insert fields.
- B. Build the record.
- C. Set field properties.
- D. Set record field properties.
- E. Select the SubRecord record type.

Answer: A,D,E

Question No : 21 - (Topic 1)

Examine this PeopleCode snippet:

```
SetDefault(ORDER.DATE);
```

Select the object-oriented equivalent.

- A. &Field = GetField(ORDER.DATE);&Field.SetDefault();
- B. &Field = CreateField(ORDER.DATE);&Field.SetDefault();
- C. &Field = GetField(ORDER.DATE);&Field(SetDefault);
- D. &Field = CreateField(ORDER.DATE);&Field.SetDefault = True;
- E. &Field = CreateField();&Field.SetDefault(ORDER.DATE);

Answer: A

Question No : 22 - (Topic 1)

Select the correct syntax for a PeopleCode conditional statement.

- A. If condition Then<PeopleCode statement(s)>[Else<PeopleCode statement(s)>]
- B. If condition Then<PeopleCode statement(s)>[When other<PeopleCode

statement(s)>];End-If;

C. When condition Then<PeopleCode statement(s)>];[Else when<PeopleCode statement(s)>];]End-If;

D. If condition<PeopleCode statement(s)>];[Else<PeopleCode statement(s)>];]End-If;

E. If condition Then<PeopleCode statement(s)>];[Else<PeopleCode statement(s)>];]End-If;

Answer: E

Question No : 23 - (Topic 1)

Select the correct order for the process flow for implementing tableset sharing.

- 1) Create logical Set IDs.
- 2) Map set control values in the Tableset Control.
- 3) Run the Alter tables process.
- 4) Create or modify record groups.
- 5) Add the SETID field to the control table record definition.
- 6) Modify transaction table and control table page definitions.
- 7) Add the BUSINESS_UNIT field to the transaction table record definition.
- 8) Define the Set Control Field.

A. 6, 5, 7, 3, 8, 1, 2, 4

B. 8, 1, 2, 4, 5, 6, 7, 3

C. 7, 8, 5, 1, 4, 2, 3, 6

D. 7, 5, 8, 3, 6, 1, 4, 2

E. 1, 2, 4, 5, 7, 3, 8, 6

Answer: D

Question No : 24 - (Topic 1)

Which definition potentially has the most far-reaching consequences if it is modified?

- A. Field definition
- B. Record definition
- C. Page definition

- D. Component definition
- E. Menu definition

Answer: A

Question No : 25 - (Topic 1)

Within the component processor flow, field action processing is initiated when _____.

- A. a field value is changed
- B. a user changes a value in a field
- C. the component build process completes
- D. a user enters an incorrect value in a field
- E. a user changes a value in a field and exits the field or saves

Answer: E

Question No : 26 - (Topic 1)

Select the three best practices for portal navigation design. (Choose three.)

- A. Design for a flat taxonomy.
- B. Order content references and folders alphabetically.
- C. Clearly describe each level in the taxonomy using mouse-over text in sentence case.
- D. Clearly label each level in the taxonomy, repeating the primary business process name if necessary.
- E. Limit the contents of a folder so that folder and content references combined are visible to the end user.

Answer: A,C,E

Question No : 27 - (Topic 1)

You can print the report after running the Crystal report and saving the file.

Which three options are true when printing a Crystal report? (Choose three.)

- A. To print HTML reports from Crystal Reports, open the appropriate HTML file and print it from the browser.

- B.** Before you print a Crystal report, you must modify a query to include additional fields and you need to modify the report definition in Crystal Reports.
- C.** As with many Microsoft Windows applications, you can choose to print the entire report or only a few pages, specify the number of copies to print, and indicate whether you want the copies collated.
- D.** If you want to update and print the report from within Crystal Reports, the query and report names must match to use the formatting that you just created in Crystal Reports every time you print the report.
- E.** If you want to run your report directly from Microsoft Windows-based PeopleSoft Query, the query and report names must match to use the formatting that you just created in Crystal Reports every time you print the report.

Answer: A,C,E

Question No : 28 - (Topic 1)

Examine this PeopleCode snippet:

```
Local Rowset &RSCUST, &RSSTUD;
```

```
&RSCUST = GetRowset(RECORD.CUST_TBL);
```

```
&RSSTUD = CreateRowset(RECORD.STUDENT_TBL);
```

```
&RSCUST.CopyTo(&RSSTUD, RECORD.CUST_TBL, RECORD.STUDENT_TBL);
```

Select the two correct statements. (Choose two.)

- A.** &RSCUST is a stand-alone rowset object that references the rows in PS_CUST_TBL.
- B.** &RSSTUD is a stand-alone rowset object that references the rows in PS_STUDENT_TBL.
- C.** &RSCUST is a rowset object that references the component buffer data for the CUST_TBL record.
- D.** &RSCUST is a stand-alone rowset object based on the structure of the CUST_TBL record definition.
- E.** &RSSTUD is a rowset object that references the component buffer data for the STUDENT_TBL record.
- F.** &RSSTUD is a stand-alone rowset object based on the structure of the STUDENT_TBL record definition.

Answer: C,F

Question No : 29 - (Topic 1)

Select three true statements about the structure of PeopleSoft databases. (Choose three.)

- A. The standard suffix for a prompt table is _TBL.
- B. System catalog table names vary based on database platform.
- C. PSXLATITEM is a PeopleTools table that stores translate values.
- D. PS_PAGEDEFN is a PeopleTools table that stores page metadata.
- E. Application data table structure is based on related language tables metadata.
- F. The standard categories of tables in a PeopleSoft database are the system catalog tables, the PeopleTools tables, the related language tables, and the application data tables.

Answer: A,B,C

Question No : 30 - (Topic 1)

Which is a valid use of errors and warnings in the PeopleCode row action events?

- A. Place an error statement in RowDelete to prevent a row from being deleted.
- B. Place an error statement in RowInsert to prevent a row from being inserted.
- C. Place a warning statement in RowInsert to give the user an opportunity to accept the insert or cancel it.
- D. Place an error statement in RowInsert to give the user an opportunity to accept the insert or cancel it.
- E. Place an error statement in RowDelete to give the user an opportunity to accept the delete or cancel it.

Answer: A

Question No : 31 - (Topic 1)

Which three features have the greatest effect on buffer allocation performance? (Choose three.)

- A. Search keys
- B. Related fields
- C. Nested scroll areas
- D. Display control fields
- E. PeopleCode references to other record definitions

Answer: B,C,E

Question No : 32 - (Topic 1)

Which three statements are true when you modify the default settings in Crystal Reports?
(Choose three.)

- A.** To add a Print Date field, you drag the Print Date field from the Field Explorer to the appropriate area of the report.
- B.** To change fonts in a report, you select the text, double-click it, and then select the appropriate font, style, size, and color from the toolbar.
- C.** To change default column headings of a report, you can either double-click the column heading that you want to change or click the text object and select Edit, Edit Text. Then, edit the text and click a blank area of the report to deselect the column headings.
- D.** If you modify a query to include additional fields, you need to modify the report definition in Crystal Reports to include the new fields in your report. To modify the report definition, select the Verify Database option from the Database menu.
- E.** You can make the column headings as long as you want. If you make them much longer than the current heading, Crystal Reports will automatically enlarge the text box to fit your new heading.

Answer: A,C,D

Question No : 33 - (Topic 1)

Select three differences between derived/work fields and SQL table fields. (Choose three.)

- A.** Derived/work fields cannot contain PeopleCode.
- B.** Derived/work fields cannot have prompt table edits.
- C.** Users cannot change values in derived/work fields.
- D.** Derived/work field values are not stored in the database.
- E.** Standard system validations, such as data type, are not applied on derived/work fields.
- F.** Derived/work fields can be placed at any level of the page without violating page-order rules.
- G.** Only those derived/work fields that are on a page or that are referenced by PeopleCode are loaded into the component buffer.

Answer: D,F,G

Question No : 34 - (Topic 1)

Select three rules for PeopleCode user-defined variables. (Choose three.)

- A. User-defined variables must begin with %.
- B. The variable name can be up to 1,000 characters long.
- C. The variable name must be at least eight characters long.
- D. User-defined string variables begin with \$ and numeric variables begin with #.
- E. The variable name must contain at least one numeric character and one uppercase character.
- F. If a variable has not been declared before it is used, it is automatically declared as Local Any.
- G. Component and global scope variables must be declared before the first line of executable code.

Answer: B,F,G

Question No : 35 - (Topic 1)

The PeopleSoft Process Scheduler Server Agent should not run continuously. To control its activity, you can schedule a non-running time for the server. This non-running time refers to the number of seconds that you want the agent to wait before it checks for queued process requests in the Process Request table. To set the non-running time for the server, which option do you need to set?

- A. The Heartbeat field on the Server Definition page.
- B. The Max Concurrent field on the Distribution page.
- C. The Sleep Time field on the Server Definition page.
- D. The Start Time and End Time fields on the Operation page.
- E. The Server Load Balancing Option field on the Operation page.

Answer: C

Question No : 36 - (Topic 1)

This PeopleCode snippet creates a record object, where TASK and RESOURCE_NAME are keys on TASK_RSRC.

```
&MyRec = CreateRecord(Record.TASK_RSRC);  
  
&MyRec.TASK.Value = &Task;  
  
&MyRec.RESOURCE_NAME.Value = &Resource;
```

Which method will populate the record object with one row from PS_TASK_RSRC?

- A. Insert
- B. Fetch
- C. Update
- D. Execute
- E. SelectByKey

Answer: E

Question No : 37 - (Topic 1)

Signon PeopleCode is commonly used to _____.

- A. validate page data
- B. audit data changes
- C. migrate user profiles between databases
- D. apply personalizations to the user home page
- E. validate a user ID and password against a directory server

Answer: E

Question No : 38 - (Topic 1)

View the Exhibit.

PeopleCode is used to update the Grand Total field when a change is made to the Customer Orders page.

On which three events should the program be placed? (Choose three.)

Psu Cust Order

Customer: CONS Consulting Services Order Date: 10/01/1999 Order Number: 00000019

Status Date: 10/01/1999 Order Status: Initial Delivery Method: FEDX

Order Details Customize | Find | First 1-3 of 3 Last

Order Line Number	Item Code	Description	Quantity	Price	Total Price	Fill Status
1	2000	HP 1600 Multiplexer	20	221.00	4420.00	<input checked="" type="checkbox"/>
2	4000	Coaxial cable 9ft	30	8.00	240.00	<input type="checkbox"/>
3	6000	Mondo Modem 56	50	68.00	3400.00	<input type="checkbox"/>

Grand Total: 8060.00

- A. RowInit
- B. RowDelete
- C. RowInsert
- D. FieldEdit
- E. FieldChange
- F. SavePreChange
- G. SavePostChange

Answer: A,B,E

Question No : 39 - (Topic 1)

Select four PeopleSoft field definition types. (Choose four.)

- A. VarChar
- B. Integer
- C. Number
- D. Binary
- E. Long Character
- F. BLOB
- G. Image
- H. ImageReference

Answer: C,E,G,H

Question No : 40 - (Topic 1)

Which PeopleCode event would you use to validate the search key?

- A. SearchInit
- B. SearchSave
- C. SearchEdit
- D. EditSearch
- E. InitSearch

Answer: B

Question No : 41 - (Topic 1)

View the Exhibit.

What is OCP?



- A. a page definition
- B. a record definition
- C. an application class
- D. an application package
- E. a presentation definition
- F. an application class superclass
- G. an application class subpackage

Answer: D

Question No : 42 - (Topic 1)

You attempt to drag the ADDR_SBP subpage into the PSU_HOTEL page. The insert gives you an error and fails. Select the most likely reason why this occurred.

- A. The Page Type property of the ADDR_SBP subpage was not set to 'subpage'.
- B. The Subpage Record Name Substitution property was not set to the correct record.
- C. The autosize setting on the subpage was not set and the subpage was too big for the page.
- D. The autosize setting on the page was not set and the page cannot expand to accommodate the subpage.

Answer: A

Question No : 43 - (Topic 1)

Examine this PeopleCode snippet:

```
Local Rowset &RS_Level0, &RS_Level1;
```

```
Local Row &Row_Level0, &Row_Level1;
```

```
Local Record &Rec_EMP;
```

```
Local Field &Fld_ROLE;
```

```
&RS_Level0 = GetLevel0();
```

```
&ROW_Level0 = &RS_Level0.GetRow(1);
```

If this is the beginning of a program that will traverse the data buffer to access values at level 1, which would be the next valid PeopleCode statement?

- A. &Row_Level1 = GetRow(&l);
- B. &Row_Level1 = &RS_Level1.GetRow(&l);
- C. &RS_Level1 = &Row_Level0.GetRowSet(SCROLL.DEPT);
- D. &REC_TASKRSRC = &Row_Level1.GetRecord(RECORD.EMP);
- E. &FLD_PCTAVAIL = &REC_TASKRSRC.GetField(FIELD.ROLE);

Answer: C

Question No : 44 - (Topic 1)

Oracle's PeopleSoft Query uses query access group trees to control security of the tables in your PeopleSoft database. Which three statements are true regarding query access group trees? (Choose three.)

- A.** You define a hierarchy of record components, based on logical or functional groupings, and then give users access to one or more branches of the tree.
- B.** After you build your query access group trees, users are granted access by default to create new queries and to run existing queries, and they have the access rights to the record components that are used in the queries.
- C.** Users can use PeopleSoft Query to retrieve information only from those tables with record definitions they have access to.
- D.** You can create, view, and update query access group trees using PeopleSoft Query Access Manager.
- E.** After you build a query tree, users can then generate queries on any tables that exist in the database.

Answer: A,C,D

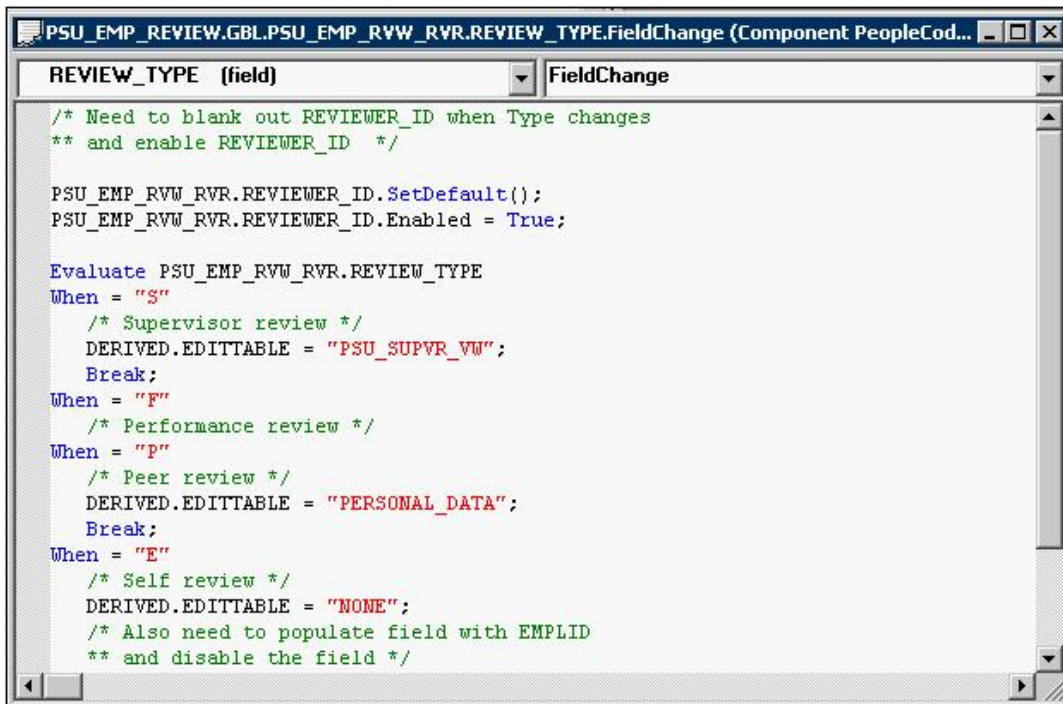
Question No : 45 - (Topic 1)

View the Exhibit.

This FieldChange program conditionally populates DERIVED.EDITTABLE, based on the value of PSU_EMP_RVW_RVR.REVIEW_TYPE.

Another similar program should be placed in a companion event.

In which other event should the other PeopleCode program be placed?



```
PSU_EMP_REVIEW.GBL.PSU_EMP_RVW_RVR.REVIEW_TYPE.FieldChange (Component PeopleCod...
REVIEW_TYPE (field) FieldChange
/* Need to blank out REVIEWER_ID when Type changes
** and enable REVIEWER_ID */
PSU_EMP_RVW_RVR.REVIEWER_ID.SetDefault();
PSU_EMP_RVW_RVR.REVIEWER_ID.Enabled = True;
Evaluate PSU_EMP_RVW_RVR.REVIEW_TYPE
When = "S"
  /* Supervisor review */
  DERIVED.EDITTABLE = "PSU_SUPVR_VW";
  Break;
When = "F"
  /* Performance review */
When = "P"
  /* Peer review */
  DERIVED.EDITTABLE = "PERSONAL_DATA";
  Break;
When = "E"
  /* Self review */
  DERIVED.EDITTABLE = "NONE";
  /* Also need to populate field with EMPLID
  ** and disable the field */
```

- A. FieldEdit
- B. RowInit
- C. RowInsert
- D. SavePreChange
- E. SavePostChange

Answer: B

Question No : 46 - (Topic 1)

In Crystal Reports, you use the Design tab to format reports. Which three statements are true regarding the usage of the Design tab? (Choose three.)

- A. It is used to enter the title of the report and other information that you want to appear at the top of the first page and at the bottom of the page.
- B. It is used to display the rows of data from your database.
- C. It is used to preview your report in portrait or landscape orientation according to the number and width of the columns that are in your query.
- D. It is used to enter or modify the column headings and other identifying information that you want to appear at the top of each page.
- E. It is used to define the default language of your reports based on the languages that you license when you purchased Oracle's PeopleSoft Enterprise software.

Answer: A,B,D

Question No : 47 - (Topic 1)

View the Exhibit.

As the component processor loads a component, it executes PeopleCode programs according to buffer allocation rules.

Each row in the table represents a PeopleCode program and its associated definition, scroll level, and event.

In what order will the programs execute?

Program	Definition	Level	Event
A	Component	Level 0 Record	RowInit
B	Record	Level 1 Record	RowInit
C	Component	Level 0 Record	FieldDefault
D	Component	Level 1 Record	RowInit
E	Record	Level 0 Record	FieldDefault

- A. A, B, C, D, E
- B. C, A, D, E, B
- C. C, E, A, D, B
- D. E, C, A, B, D
- E. E, D, C, B, A

Answer: D

Question No : 48 - (Topic 1)

View the Exhibit.

You access a content reference and see the search page shown.

Select the property that you must change so that the search page title is more descriptive.

PSU_COURSE
Enter any information you have and click Search. Leave fields blank for a list of all values.

Find an Existing Value **Add a New Value**

Course Code: begins with

Course Description: begins with

Include History **Correct History** **Case Sensitive**

[Basic Search](#)

- A. Menu item label
- B. Component item label
- C. Record definition label
- D. Search page item label

Answer: A

Question No : 49 - (Topic 1)

Which PeopleCode event is used to populate a field only if the field is empty?

- A. RowInit
- B. PreBuild
- C. RowSelect
- D. PostBuild
- E. FieldDefault
- F. FieldFormula

Answer: E

Question No : 50 - (Topic 1)

Select the two true statements about the Web server and the application server. (Choose two.)

- A. Executables reside on the application server.
- B. PeopleSoft services generally run from the Web server.
- C. The Web server caches images, style sheets, and JavaScript.
- D. The application server stores user data until the Web server connects with and writes

the values to the database server.

E. Under certain development configurations, you can connect the browser directly to the database server for testing purposes.

Answer: A,C

Question No : 51 - (Topic 1)

Match each description with a PeopleCode data buffer access object.

- a. A component scroll
- b. Consists of one or more records of data
- c. Can have zero, one, or more child rowsets
- d. Consists of one or more fields

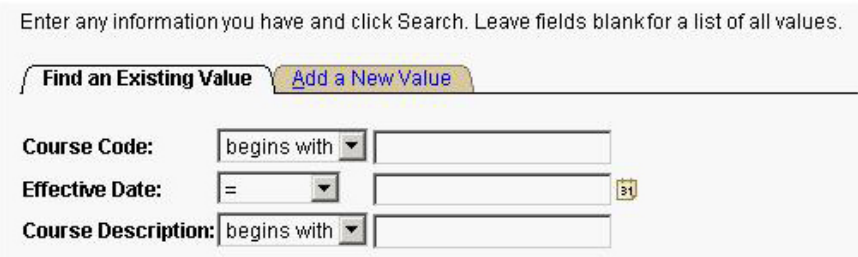



- A. a - Rowsetb - Rowc - Rowd - Record
- B. a - Recordb - Rowc - Rowd - Record
- C. a - Rowsetb - Rowsetc - Rowd - Field
- D. a - Recordb - Rowsetc - Rowd - Record
- E. a - Rowsetb - Rowc - Recordd - Field

Answer: A

Question No : 52 - (Topic 1)

View the Exhibit. Select the advanced search page that this record definition will generate.

Num	Field Name	Type	Key	Ordr	Dir	CurC	Srch	List	Sys
1	COURSE	Char	Key	1	Asc		Yes	Yes	No
2	EFFDT	Date	Key	2	Desc		No	No	No
3	EFF_STATUS	Char					No	No	No
4	DESCR	Char	Alt		Asc		No	Yes	No
5	COURSE_TYPE	Char					No	No	No

- A. 
- B. 
- C. 
- D. 

- A. Exhibit A
- B. Exhibit B
- C. Exhibit C
- D. Exhibit D

Answer: D

Question No : 53 - (Topic 1)

View the Exhibit.

The Customer Orders page has a requirement that Order Status cannot be changed to Closed if Fill Status is for any row in Order Details.

You write a FieldChange PeopleCode program with a loop to check the values of Fill Status.

Each loop increments &I.

Which statement would you use in the loop to check Fill Status?

Order Line Number	Item Code	Description	Quantity	Price	Total Price	Fill Status
1	6000	Mondo Modem 56	1	68.00	68.00	<input checked="" type="checkbox"/>
2	5000	24 Pin Cable 6 ft	1	5.00	5.00	<input checked="" type="checkbox"/>
3	7000	Computer ToolKit	1	17.95	17.95	<input type="checkbox"/>

- A. &status = FetchValue(Scroll.ORDER_DTL, &I, ORDER_DTL.FILL_STATUS);
- B. &status = FetchValue(&I, ORDER_DTL.FILL_STATUS);
- C. &status = FetchValue(ORDER_DTL.FILL_STATUS, &I);
- D. &status = FetchValue(ORDER_DTL.FILL_STATUS);
- E. &status = ORDER_DTL.FILL_STATUS;

Answer: A

Question No : 54 - (Topic 1)

Select two options that demonstrate referential integrity in PeopleSoft applications. (Choose two.)

PSU_ITEM_TBL (Record)

Num	Field Name	Type	Len	Format	Short Name	Long Name
1	SETID	Char	5	Upper	SetID	SetID
2	ITEM_CD	Char	6	Upper	Item	Item Code
3	EFFDT	Date	10		Eff Date	Effective Date
4	EFF_STATUS	Char	1	Upper	Status	Status as of Effective D
5	DESCR	Char	30	Mixed	Descr	Description
6	PRICE	Nbr	6,2		Price	Price
7	DESCRLONG	Long	0		Descr	Description

A.

PSU_PO_HDR (Record)

Num	Field Name	Type	Req	Edit	Prompt Table
1	ORDER_NBR	Char	Yes		
2	BUSINESS_UNIT	Char	Yes	Prompt	BUS_UNIT_TBL_TR
3	ORDER_DT	Date	Yes		
4	VENDOR_CD	Char	No	Prompt	PSU_VENDOR_TBL
5	ORDER_STATUS	Char	No	Xlat	
6	STATUS_DT	Date	No		
7	DELIVER_METHOD	Char	No	Prompt	PSU_TRANSPT_TBL
8	ADDED_BY	Char	No		
9	APPR_STATUS	Char	No	Xlat	
10	APPR_INSTANCE	Nbr	No		

B.

PSU_CUST.GBL.SavePostChange (Component PeopleCode)

```

PSU_CUST.GBL (component) SavePostChange
If FieldChanged(PSU_CUST_TBL.STREET1) Or
FieldChanged(PSU_CUST_TBL.CITY) Or
FieldChanged(PSU_CUST_TBL.STATE) Or
FieldChanged(PSU_CUST_TBL.ZIP) Or
FieldChanged(PSU_CUST_TBL.COUNTRY) Or
FieldChanged(PSU_CUST_TBL.PHONE) Then
    SQLExec("Update PS PSU_STUDENT_TBL set STREET1 = :1, CITY = :2, STATE = :3,
ZIP = :4, COUNTRY = :5, PHONE = :6 Where CUSTOMER_ID = :7 and SAME_ADDR_CUSTOMER
= 'Y' ", PSU_CUST_TBL.STREET1, PSU_CUST_TBL.CITY, PSU_CUST_TBL.STATE,
PSU_CUST_TBL.ZIP, PSU_CUST_TBL.COUNTRY, PSU_CUST_TBL.PHONE,
PSU_CUST_TBL.CUSTOMER_ID);
End-If;
    
```

C.

PSU_CUST.GBL (Component)

Page Name	Item Name	Hidden	Item Label	Folder Tab Label
PSU_CUST	PSU_CUST_TABLE	<input type="checkbox"/>	Customer Table	

D.

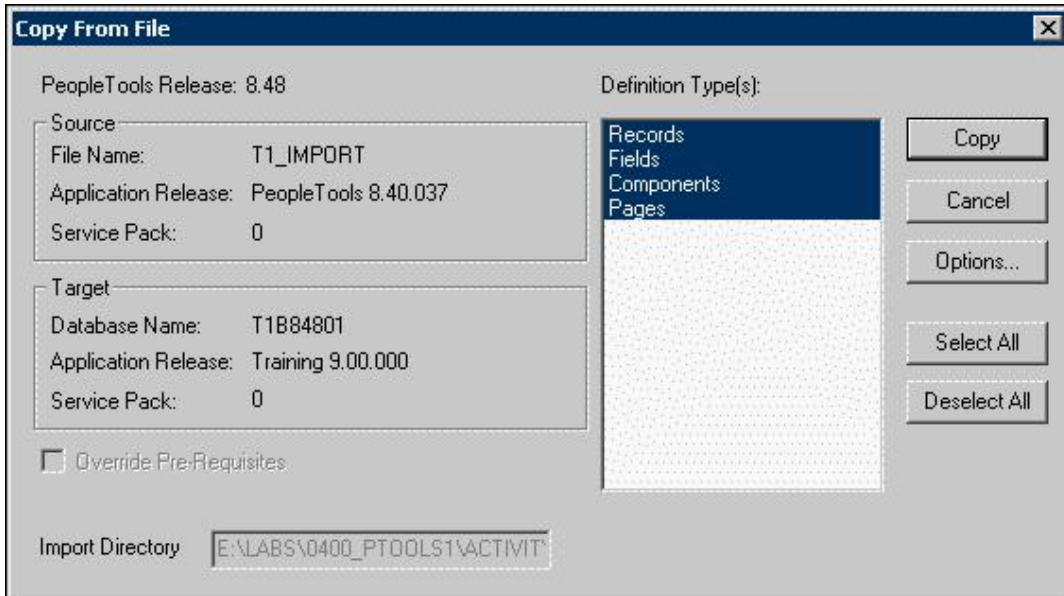
- A. Exhibit A
- B. Exhibit B
- C. Exhibit C
- D. Exhibit D

Answer: B,C

Question No : 55 - (Topic 1)

View the Exhibit.

You create a new application in your development database. You copy this project from a development to a production database. What two steps must you take to make the new application functional? (Choose two.)



- A. Build the SQL table.
- B. Register the component.
- C. Grant security and navigation.
- D. Visually inspect the page in the browser.
- E. Create a new menu definition for the component.

Answer: A,B

Question No : 56 - (Topic 1)

View the Exhibit.

Select the SQL statement that corresponds to the record definition.

PSU_PROD_CUST_VW (Record)						
Record Fields						
Num	Field Name	Type	Len	Format	Short Name	Long Name
1	PRODUCT	Char	3	Upper	Product	PeopleSoft Product
2	CUSTOMER_ID	Char	6	Upper	Customer	Customer
3	DESCR	Char	30	Mixed	Descr	Description
4	PLATFORM	Char	3	Upper	Platform	Database Platform
5	PRODUCTION_STATUS	Char	1	Upper	Prod Status	Production Status

- A. SELECT A.PRODUCT_ID, A.CUSTOMER, B.DESCR, A.PLATFORM, A.PRODUCTION_STATUSFROM PS_PSU_CUST_PROD A, PS_PSU_CUST_TBL BWHERE A.CUSTOMER_ID = B.CUSTOMER_ID
- B. SELECT A.PRODUCT, A.CUSTOMER_ID, B.DESCR, A.PRODUCTION_STATUSFROM PS_PSU_CUST_PROD A, PS_PSU_CUST_TBL BWHERE A.CUSTOMER_ID = B.CUSTOMER_ID
- C. SELECT A.PRODUCT, A.CUSTOMER_ID, B.DESCR, A.PLATFORM, A.PRODUCTION_STATUSFROM PS_PSU_CUST_PROD A, PS_PSU_CUST_TBL BWHERE A.CUSTOMER_ID = B.CUSTOMER_ID
- D. SELECT A.PRODUCT, A.CUSTOMER_ID, B.DESCR, A.PLATFORM, A.PRODUCTION_STATUSFROM PS_PSU_CUST_PROD A, PS_PSU_CUST_TBL BWHERE A.CUSTOMER_ID = A.CUSTOMER_ID

Answer: C

Explanation:

QUESTIONNO: 57

Select the three correct statements about PeopleSoft field definitions. (Choose three.)

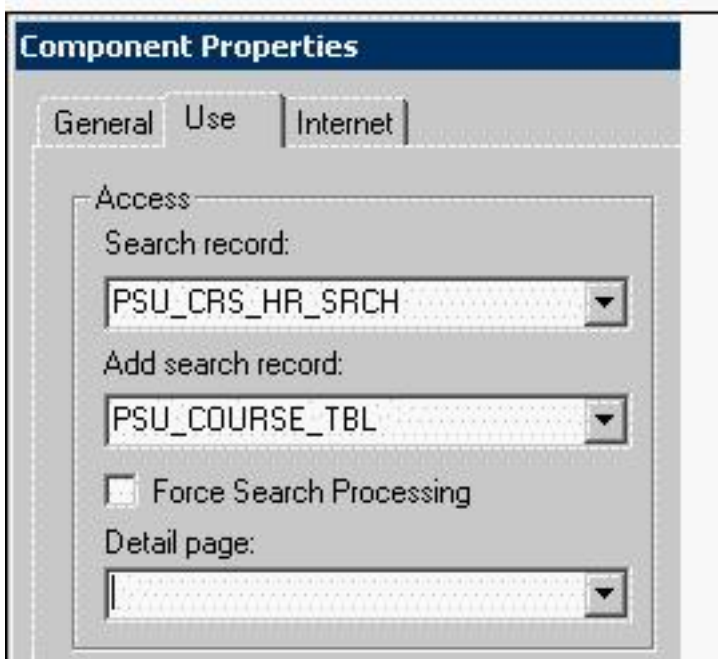
- A. Field definitions can have multiple labels.
- B. Some field definition properties can be changed only with PeopleCode.
- C. Modifying a field definition automatically alters all tables in which the field occurs.
- D. After you save a field definition, you cannot change the data type without deleting the field.
- E. Field definitions are stand-alone definitions that do not need to be associated with record definitions.

Answer: A,B,E

Question No : 57 - (Topic 1)

View the Exhibit.

You created this component with a security search record to retrieve and view only Human Resources (HR) courses. Select the most likely reason why you also configured an Add search record.



- A. You cannot add data through any view.
- B. The component requires the Add action.
- C. The Add search record maintains the row-level security of the search view.
- D. Security search records can contain no search keys and the Add search record defines the search keys for the component.

Answer: C

Question No : 58 - (Topic 1)

Select the three properties that you can maintain in a PeopleSoft record definition. (Choose three.)

- A. Triggers
- B. PeopleCode
- C. Column order
- D. Record field length
- E. Query Security record
- F. Prompt Securityrecord

Answer: B,C,E

Question No : 59 - (Topic 1)

What is the maximum number of duplicate levels that you can place on a page?

- A. Zero
- B. One
- C. Two
- D. Three
- E. Four
- F. As many as the page real estate can support

Answer: F

Question No : 60 - (Topic 1)

Select the three primary purposes for SQL views in PeopleSoft applications. (Choose three.)

- A. Reporting
- B. Filtering rows
- C. Joining tables
- D. Assigning aliases
- E. Rearranging columns

Answer: B,C,E

Question No : 61 - (Topic 1)

Choose the four statements that are true about PSXLATITEM and its values. (Choose four.)

- A. Translate values are numeric.
- B. Translate values are effective-dated.
- C. Translate values are linked to a field.
- D. Fields can share values in PSXLATITEM.
- E. Translate values should be relatively static.
- F. PSXLATITEM is the name of the PeopleTools translate table.

Answer: B,C,E,F

Question No : 62 - (Topic 1)