



Oracle

Exam 1z0-554

Oracle Application Development Framework Essentials

Version: 8.0

[Total Questions: 96]

Question No : 1

Valid order status codes for an application are contained in the StatusCode attribute of an OrderStatusCodes view object. In the orders view object, the OrderStatusCode attribute should be selected from a drop-down list. How does ADF Business Component refer to the OrderStatusCodes view OrderStatusCode attribute?

- A. It uses a view accessor in the Orders view object to refer to the OrderStatusCode view object.
- B. It uses a view link between the Orders .OrderStatusCode and OrderStatusCodes.StatusCode attributes.
- C. It uses a where clause in the Orders view object and includes:
WHERE Orders.OrderStatusCode = OrderStatusCodes. StatusCode
- D. It uses a where clause In the Orders view object and includes:
WHERE Orders.OrderStatusCode=OrderStatusCodes.Id
- E. It uses a joined view object to include both the Orders and OrderStatusCodes entity objects.

Answer: A

Reference: <http://www.oracle.com/technetwork/developer-tools/jdev/ccset23-all-100068.html>

Question No : 2

Which three AM laces components fire a selectionEvent?

- A. inputListOfValues
- B. tree
- C. All input and select components
- D. inputComboboxListOfValues
- E. treeTable
- F. table
- G. All command components

Answer: B,D,E

Question No : 3

Choose four benefits of using page templates.

- A. They increase developer productivity.
- B. You can base a new page template on an existing page template.
- C. They can be nested.
- D. They can be customized.
- E. They enable a consistent look and feel across the pages of an application.
- F. They are reusable.
- G. There are two reuse mechanisms: by copy and by reference

Answer: A,B,D,E

Question No : 4

Which three statements are correct about task flow control flows?

- A. A control flow would typically be initiated from a button or link that is being clicked
- B. A view activity can be the source for many control flow rules.
- C. A control flow can exist between a view activity and a method call.
- D. The definition of control flows for a page is stored in the page backing bean.
- E. The name of a control flow must match the name of the view activity to which it navigates

Answer: A,C,E

Question No : 5

How is the view activities in a bounded task flow used when dropped onto a page?

- A. as page fragments that are rendered within a region
- B. as .jspx pages that contain task flow calls
- C. as page fragments that contain an f:view tag
- D. as .jspx pages that are rendered within a module
- E. as a .jspx page that is defined as a template

Answer: A

Reference: http://docs.oracle.com/cd/E12839_01/web.1111/b31974/taskflows_regions.htm
(topic 17.1, second paragraph)

Question No : 6

You master (form)/detail (table) page displaying a single order and a table containing the order items on it. If contains navigation to move from one order to another order what three bindings types would you find in the page definition file?

- A. attributeValue, action, table
- B. attributeValue, action, tree
- C. attributeValue, button, table
- D. attributeValue, button, tree
- E. attributeValue, action, list
- F. attributeValue, button, list

Answer: B

Question No : 7

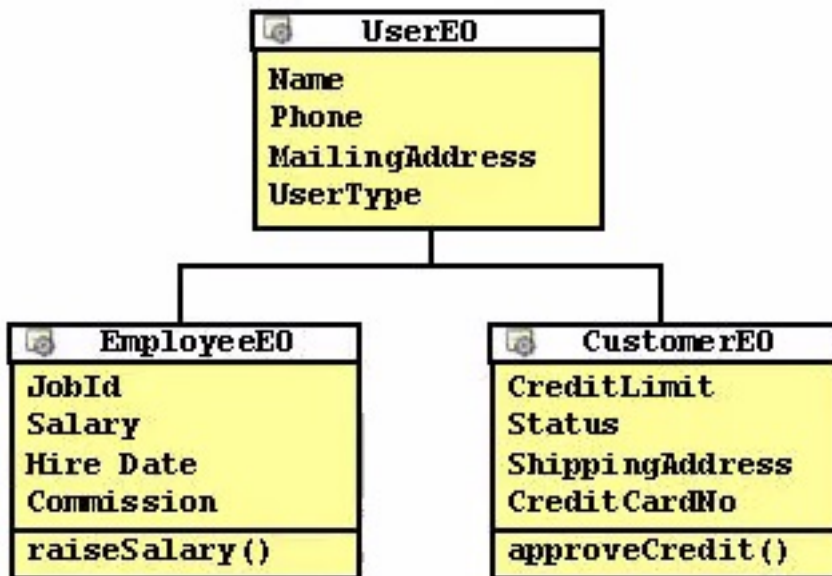
What memory scope would you use if it only needed to be available from the time a page is until the time a new page is rendered?

- A. Request
- B. View
- C. Page Flow
- D. Backing Bean
- E. Session

Answer: B

Reference: http://docs.oracle.com/cd/E12839_01/web.1111/b31974/adf_lifecycle.htm

Question No : 8



Considering the inheritance depicted in the image above, how would you add functionality for reading and updating all of the appropriate attributes for each type of user?

- A. Create a view object that defines a query as SELECT User.NAME, Users.Phone, Users.MailingAddress, Users.UsersType, Employee.JobId, Employee.Salary, Employees.HireDate, Employee.Comission, Customers.CreditLimit, Customers.Status, Customers.ShippingAddress, Customers.CreditCardNo FROM USERS users, USERS Employees, USERS Customers.
- B. Create a view object based on userEO, EmployeeEO, and CustomerEO. Ensure that the join type on EmployeeEO and CustomerEO are set to inner join, and select the reference checkbox.
- C. Create a view object for UserEO and select EmployeeEO, and CustomerEO as subtypes. Select all attributes from UserEO, EmployEo, and CustomerEO to include the view object.
- D. Create three object, one for each user type. Create view links between USerVO. User type and Employee VO. UserType and between UserVO. UserType and CustomerVO.UserType, and define UserType as a discriminator in UserVO.
- E. Create a view object for UserEO. Define UserType as a discriminator and supply a default value. Create appropriate subtypes EO for each VO, and supply a default value for UserType.

Answer: B

Question No : 9

Although null is among the possible values for a managed property, it is allowed only for

what type?

- A. int
- B. boolean
- C. String
- D. Object
- E. Number

Answer: C

Question No : 10

What type of reusable component is being described here?

“They define reusable skeletons which are available to be extended, and therefore, cannot be run on their own. They can be based on another reusable component of same type. To reuse mechanisms are provided: by copy and by reference”

- A. Application modules
- B. Page templates
- C. Task flow templates
- D. Task flows
- E. Declarative components

Answer: B

Reference: <http://www.oracle.com/technetwork/developer-tools/adf/learnmore/oracle-adf-11g-primer-154277.pdf> (page 9)

Question No : 11

There is a specific order in which events and listeners fire. Choose the correct sequence from those listed below.

- A. 1. Value change listeners
- 2. Validators
- 3. Action listeners
- 4. Action methods

- B.** 1. Action listeners
- 2. Action methods
- 3. Validators
- 4. Value change listeners
- C.** 1. Action methods
- 2. Action listeners
- 3. Value change listeners
- 4. Validators
- D.** 1. Validators
- 2. Value change listeners
- 3. Action listeners
- 4. Action methods
- E.** 1. Value change listeners
- 2. Action listeners
- 3. Validators
- 4. Action methods

Answer: D

Reference: <http://www.scribd.com/doc/6031025/14Handling-Application-Events> (page 14-12)

Question No : 12

In which two places do you configure managed beans?

- A.** In the page definition file
- B.** In the faces-config.xml file
- C.** In the adfc-config.xml file
- D.** In the Property Inspector
- E.** In the task flow definition files

Answer: B,D

Reference:

http://docs.oracle.com/cd/E12839_01/web.1111/b31973/gs_jdev.htm#CCHIAHAD (topic 2.6.1)

Question No : 13

Which component stores application page changes in xml documents and merges the changes during the rendering of the page?

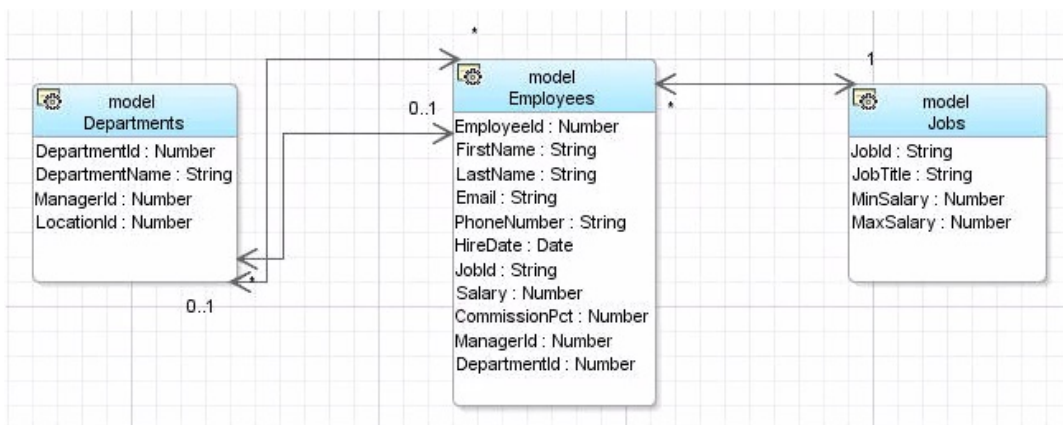
- A. WebCenter Framework
- B. WebCenter Services
- C. Metadata Services
- D. WebCenter Spaces
- E. Portals

Answer: B

Reference: http://docs.oracle.com/cd/E12839_01/webcenter.1111/e10148/jpsdg_files.htm

Question No : 14

Consider the business component entity objects included in the following diagram:



How would you create view objects to retrieve a form of jobs and table of Employees for each job?

- A) Create a read-only view object based on the query `SELECT Employees.FIRST_NAME, Employees.LAST_NAME, Jobs.JOB_TITLE from EMPLOYEES Employees, JOBS Jobs WHERE Employees.JOB_ID=Jobs.JOB_ID.`
- B) Create a view object based on the Employees and Jobs entity objects and define the join type and association used to reference the Jobs entity.
- C) Create a default view object based on the Employees entity object and a default view object based on the Jobs entity object, and create a view link between the two view objects.
- D) Create a view object based on the query `SELECT Employees.FIRST_NAME, Employees.LAST_NAME, Jobs.JOB_TITLE from EMPLOYEES Employees, JOBS Jobs WHERE Employees.JOB_TITLE=Jobs.JOB_TITLE.`
- E) Create a default view object based on the Employees entity object and a default view object based on the Jobs entity object. In the Employees view object, create a view accessor that references the Jobs view object.

- A. Option A
- B. Option B
- C. Option C
- D. Option D
- E. Option E

Answer: C

Reference: http://docs.oracle.com/cd/E12839_01/web.1111/b31974/bcadvvo.htm

Question No : 15

Which three statements are true about managed bean usage within task flows?

- A. A managed bean can be used within a task flow router activity to evaluate a navigation case.
- B. You must explicitly instantiate a managed bean before using it.
- C. Managed beans are only available in bounded task flows.
- D. Common task flow actions can be placed in a managed bean within a task flow template.
- E. A task flow parameter can reference a managed bean.
- F. A managed bean always remains in scope while the task flow within which it is used is active.

Answer: D,E,F

Reference: <http://prasanna-adf.blogspot.com/2008/02/managed-bean.html>

Question No : 16

You have a page containing all the Department items. It also includes a button to save the changes. What is the correct expression language value you should have for the Action Listener Property?

- A. #{bindings.Commit.execute}
- B. # {bindings. Commit.current Row}
- C. #{bindings.Commit.execute}
- D. #{bindings- Save.execute}
- E. # {bindings. Comnit. immediate}

Answer: C

Reference:

http://books.google.com.pk/books?id=TyLqw6i6BtYC&pg=PA432&lpg=PA432&dq=action+listener+property+%23%7Bbindings.Commit.execute%7D&source=bl&ots=PEDtbG-uOm&sig=k38P4oDp1oiQzDYKFIF7nczAE1A&hl=en&ei=GmjBTtn5GsPKsgaCw8CeAw&sa=X&oi=book_result&ct=result&resnum=5&ved=0CDgQ6AEwBA#v=onepage&q&f=false

Question No : 17

How do application modules handle business components transactions?

- A. They provide a separate database transactions for each entity object.
- B. The delegate transaction management to Transaction object.
- C. They ensure that all the view objects in the application module are committed one by one in the logical sequence.
- D. They are eligible to manage a number of database connections concurrently.

Answer: A

Reference:

http://download.oracle.com/docs/cd/B25016_08/doc/dl/web/B14362_02/chapter_bc4j.htm#i1024782 (topic 3.7.2)

Question No : 18

Which File includes all the methods to insert, update, delete, and lock rows?

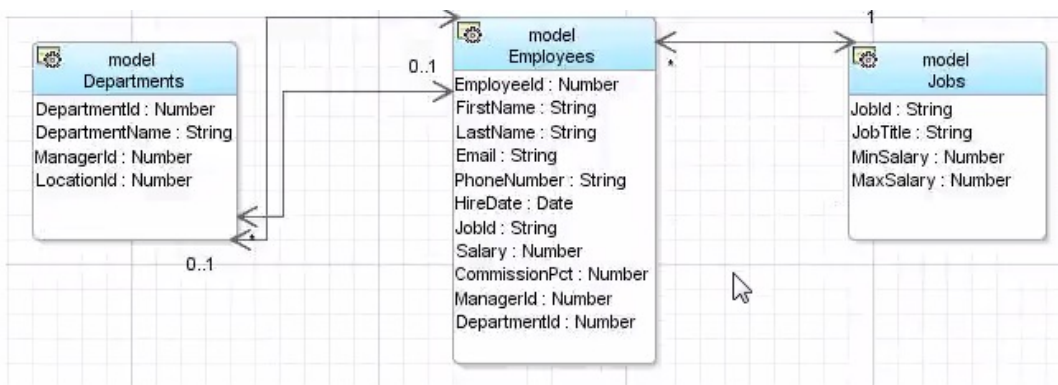
- A. Entity. Java
- B. EntityImp1. Java
- C. EntityDefImp1.Java
- D. EntityCollImp1. Java

Answer: B

Reference: http://docs.oracle.com/cd/E12839_01/web.1111/b31974/bcintro.htm (topic 3.2.4.2)

Question No : 19

Consider the business components entity objects included in the following diagram:



How would you create view objects to retrieve all information on Jobs and Employees in one table?

- A. Create a read-only view object based on the query `SELECT Employees. FIRST NAME, Employees . LAST__NAME, Jobs, JOB_TITLE from EMPLOYEES Employees, JOBS Jobs WHERE Employees. JOB_ID=Jobs. JOB_ID.`
- B. Create a view object based on the Employees and Jobs entity objects and define the join type and association used to reference the Jobs entity.
- C. Create a default view object based on the Employees entity object and a default view object based on the Jobs entity object, and create a view link between the two view objects.
- D. Create a view object based on the query `FIRST NAME, Employees . LAST__NAME, Jobs, JOB_TITLE from EMPLOYEES Employees, JOBS Jobs WHERE Employees. JOB_ID=Jobs. JOB_Title.`
- E. Create a default view object based on the Employees entity object and a default based on the Jobs entity object. In the Employees view object, create a view references the Jobs

view object.

Answer: B

Question No : 20

What type of executable would you use to link to detail collection for nested objects?

- A. Iterator
- B. AccessorIterator
- C. VariableIterator
- D. InvokeAction

Answer: B

Reference: http://groundside.com/resources/DuncanMills/S298736_bindings.pdf (page 16, please count from top. No page numbers available)

Question No : 21

You are working on the design of Web pages for an application. One page requires that user can collapse or restore panels of data. When a panel collapsed the panel contents are hidden: when panel is restored, the contents are displayed.

Which two layout components would enable you to achieve this design?

- A. af:panelSplitter
- B. af:panelCollection
- C. af:panelTabbed
- D. af:decorativeBox
- E. af:panelAccordion

Answer: C,E

Reference: http://docs.oracle.com/cd/E12839_01/web.1111/b31973/af_orgpage.htm (table 8-1)

Question No : 22

Choose two advantages of writing code in the application module that sets up or manipulates the data model?

- A. It configures entity object properties to query the correct data to display.
- B. <![if !ppt]-> <![-[e,,difj->You make the Intent of your code more clear to clients.
- C. It does not require publishing to allow the client to access the methods.
- D. <![if !ppt]-> <![-[e,,difj-> you keep the option open to improve your implementation without affecting clients.
- E. It is implemented in the application module's Def class allowing greater flexibility.

Answer: A,E

Question No : 23

Which three statements are true about ADF Business Component declarative validation?

- A. An entity object attribute can have more than one validation rule.
- B. Declarative validation can also be defined on a view object to override the entity object level validation.
- C. For an entity object level validation rule, you can define which attributes will trigger the validation rule.
- D. If your application is to be deployed in three different languages, then a separate validation rule is required for each language to handle the different translated error messages.
- E. You can define a declarative validation rule to call a Java method.

Answer: A,C,E

Reference: http://docs.oracle.com/cd/E16162_01/web.1112/e16182/bcrules.htm#sm0241

Question No : 24

During the development of an ADF BC application, you have created an entity object, CustomerEO, based on the CUSTOMERS table in the database. Further analysis of requirements highlights two transient attributes that need to be added to the CustomersEO entity object.

This means that you will have a mismatch between the entity object and the underlying table. What action should you take?

- A. Ask the DBA to add the new entity object attributes as columns in the CUSTOMFR table and then run the Create Entity Object Wizard.
- B. Ask the DBA to add the new entity object attributes as columns in the CUSTOMERS table and then synchronize the CustomersEO entity object and the CUSTOMERS table.
- C. None. The entity object can contain attributes that do not exist as columns in the table.
- D. Add the attributes to the entity object, and then synchronize the CustomersEO entity object and the CUSTOMERS table.

Answer: C

Question No : 25

You have a page that shows order items, and the product ordered. When you add a product to the ordered item list, you select it from a category. You select a category and then select the product to order from the category. You can accomplish this task with a dependent list of values. In order to accomplish this task you need to create a view criteria on the product's view. Which attribute from the Product's view should you use in the view criteria?

- A. OrderItemId
- B. ProductId
- C. ProductName
- D. CategoryId
- E. CategoryName

Answer: B

Question No : 26

Identify the business component that is being described below.

“It is a smart data service containing a data model of master-detail queries that your client interface needs to work with. It also provides a transaction and database connection used by the components it contains.”

- A. a service method