



Vendor: Cisco

Exam Code: 300-180

**Exam Name: Troubleshooting Cisco Data Center
Infrastructure (DCIT) v6.0**

Version: Demo

QUESTION 1

When configuring a traffic-monitoring session, which two guidelines are required to complete the task? (Choose two.)

- A. For Ethernet traffic, the destination must be an unconfigured physical port.
- B. For Fibre Channel, the destination must be a Fibre Channel uplink port.
- C. For Ethernet traffic, the destination must be an active port that is assigned to an existing VLAN.
- D. For Fibre Channel, the destination must be an inactive port on a VSAN.

Correct Answer: AB

QUESTION 2

Which three send and receive locations an administrator can find the root cause for a network issue on the Cisco UCS domain? (Choose three.)

- A. between fabric interconnect and LAN or SAN
- B. between the FEX and fabric interconnect
- C. between each FEX on the Cisco UCS chassis
- D. between the host and FEX
- E. between fabric interconnects within the domain
- F. between the Cisco UCS chassis and system interconnects

Correct Answer: ABD

QUESTION 3

The Core File Exporter automatically exports cores to a remote server as they are generated. Which protocol does it use for this action?

- A. FTP
- B. SCP
- C. SFTP
- D. TFTP

Correct Answer: D

QUESTION 4

Some of your servers do not have IP connectivity to the upstream network. Which two commands do you use to identify whether a data path is up and running on a switch? (Choose two.)

- A. show platform fwm info hw-stm
- B. show interface brief
- C. show npvflogi-table
- D. show mac-address table
- E. show pinning border-interfaces active

Correct Answer: BD

QUESTION 5

In a Cisco UCS environment, what are the three power types in a power policy? (Choose three.)

- A. backup
- B. grid
- C. redund
- D. n-plus-1
- E. non-redund
- F. plus-1

Correct Answer: BDE

QUESTION 6

While performing an upgrade to Cisco UCS Release 2.2, the traffic in several VLANs is no longer active. What is the cause of this issue?

- A. Ethernet and FCoE VLANs cannot be configured on the same Cisco UCS domain.
- B. The UCS Manager detected overlapping VLANs during the upgrade, and Ethernet traffic on those VLANs is now dropped.
- C. The UCS Manager needs to be rebooted to force the configuration to work properly.
- D. Ethernet and FCoE VLANs cannot be configured different Cisco UCS domain.

Correct Answer: B

QUESTION 7

Which three components are updated using the Host Upgrade Utility? (Choose three.)

- A. BIOS
- B. Network Adapter(s)
- C. Array Controller
- D. Cisco IMC
- E. LOM port
- F. UCSM
- G. Drive Firmware

Correct Answer: ABD

QUESTION 8

Where do you configure users so that they cannot access resources that belong to other organizations?

- A. roles
- B. domain separation
- C. locals
- D. VDCs

Correct Answer: C

QUESTION 9

How long are the LED states saved after a blade is removed from a Cisco UCS chassis?

- A. 1 minute
- B. 5 minutes
- C. 10 minutes
- D. 30 minutes
- E. 60 minutes

Correct Answer: C

QUESTION 10

You are troubleshooting an FCoE SAN boot issue on a Cisco UCS C240 M3 server with a VIC 1225. Which two of these represent the correct way to bind VSAN 11 to interface vfc5 attached to interface Ethernet 1/5? (Choose two.)

- A. 5548UP(config)# int vfc 5
5548UP(config-if)# bind interface Ethernet1/5 vsan 11
- B. 5548UP(config)# vsan database
5548UP(config-vsan-db)# vsan 11 interface vfc5
- C. 5548UP(config)# interface Ethernet1/5
5548UP(config-if)# bind vsan 11
- D. 5548UP(config)# vsan database
5548UP(config-vsan-db)# bind interface vfc5 vsan 11
- E. 5548UP(config)# vsan database
5548UP(config-vsan-db)# interface vfc5 vsan 11
- F. 5548UP(config)# vsan database
5548UP(config-vsan-db)# interface Ethernet1/5 vsan 11

Correct Answer: AB

QUESTION 11

How can you set a Cisco UCS C-Series Server to export tech-support data for TAC to an external file server?

- A. CIMC to a TFTP server
- B. CIMC to an RCP server
- C. FSM to a TFTP server
- D. FSM to an RCP server

Correct Answer: A

QUESTION 12

Which piece of information does the FSM provide?

- A. the current task and status
- B. a collection of blade statistics
- C. the last user to access the resource
- D. a list of faults currently suppressed by the Cisco UCS Manager

Correct Answer: A

QUESTION 13

Refer to exhibit. A Cisco UCS admin is troubleshooting an issue with a vNIC not coming up on a blade. When looking at the CLI of the "Fabric Interconnect", the admin runs this command to view the status of the interface. Which option describes a possible reason why the interface is stuck in an "initializing" state?

```
aci-sol-calo-ucsb-A(nxos)# show interface vethernet 813
Vethernet813 is down (initializing)
  Bound Interface is port-channel1282
  Port description is server 1/1, vNIC Data-A
  Hardware is Virtual, address is 8c60.4f01.4420
  Port mode is trunk
  Speed is auto-speed
  Duplex mode is auto
  300 seconds input rate 0 bits/sec, 0 packets/sec
  300 seconds output rate 0 bits/sec, 0 packets/sec
Rx
  0 unicast packets  0 multicast packets  115 broadcast packets
  115 input packets  32934 bytes
  0 input packet drops
Tx
  0 unicast packets  29 multicast packets  0 broadcast packets
  29 output packets  8729 bytes
  0 flood packets
  0 output packet drops
```

- A. The service profile is not applied to a blade.
- B. The VLANs defined on the vNIC are not defined on a matching uplink port.
- C. The uplink port is down.
- D. The QoS policy on the vNIC is invalid.
- E. The MTU on the vNIC is higher than the MTU configured in the QoS system class.

Correct Answer: C

QUESTION 14

Which two statements about configuring a traffic monitoring session are true? (Choose two.)

- A. You can set a local VM as a traffic destination.
- B. You can have up to two active monitoring sessions simultaneously.
- C. An unlimited number of monitoring session can be stored.
- D. A newly created monitoring session is enabled by default.
- E. A destination port can also be a source port within the same session.
- F. A vHBA can be a source for either an Ethernet or Fibre Channel monitoring session, but not both.

Correct Answer: BF

QUESTION 15

Which command sequence in the Cisco UCS C-Series rack server CLI sends tech support data to a TFTP server?

- A. ucs-c250 / # scope cimc
ucs-c250 /cimc # scope tech-support
ucs-c250 /cimc/tech-support # set path default.tar.gz
ucs-c250 /cimc/tech-support *# set tftp-ip 192.168.70.45
ucs-c250 /cimc/tech-support *# commit
- B. ucs-c250 / # scope system
ucs-c250 /system # scope tech-support
ucs-c250 /system/tech-support # set path default.tar.gz
ucs-c250 /system/tech-support *# set tftp-ip 192.168.70.45
ucs-c250 /system/tech-support *# commit
- C. ucs-c250 / # scope support
ucs-c250 /support # scope tech-support
ucs-c250 /support/tech-support # set path default.tar.gz
ucs-c250 /support/tech-support *# set tftp-ip 192.168.70.45
ucs-c250 /support/tech-support *# commit
- D. ucs-c250 / # scope fault
ucs-c250 /fault # scope tech-support
ucs-c250 /fault/tech-support # set path default.tar.gz
ucs-c250 /fault/tech-support *# set tftp-ip 192.168.70.45
ucs-c250 /fault/tech-support *# commit

Correct Answer: A

QUESTION 16

Which CLI command should you use to promote the local fabric interconnect to primary?

- A. cluster primary force
- B. cluster failover primary
- C. cluster force primary
- D. cluster failover
- E. failover

Correct Answer: C

QUESTION 17

HOTSPOT

Instructions

- THIS TASK DOES NOT REQUIRE DEVICE CONFIGURATION.
- Before beginning the questions, carefully read the information in the Scenario tab and familiarize yourself with the network topology.
- To access the multiple-choice questions, click on the numbered boxes on the left of the top panel.
- There are four multiple-choice questions with this task. Be sure to answer all four questions before clicking the Next button.
- Use the tabs at the bottom of the question to navigate between the Topology and question-specific Exhibits. Exhibit_1 maps to Question 1, and so on.

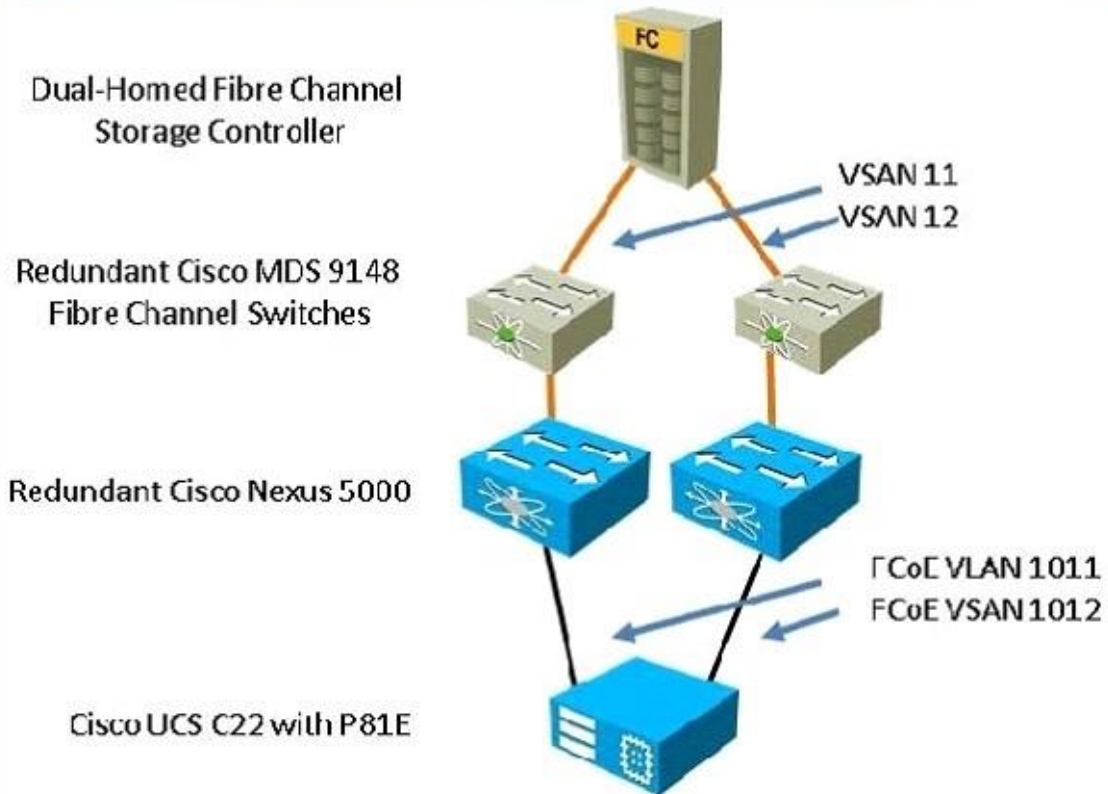
Scenario

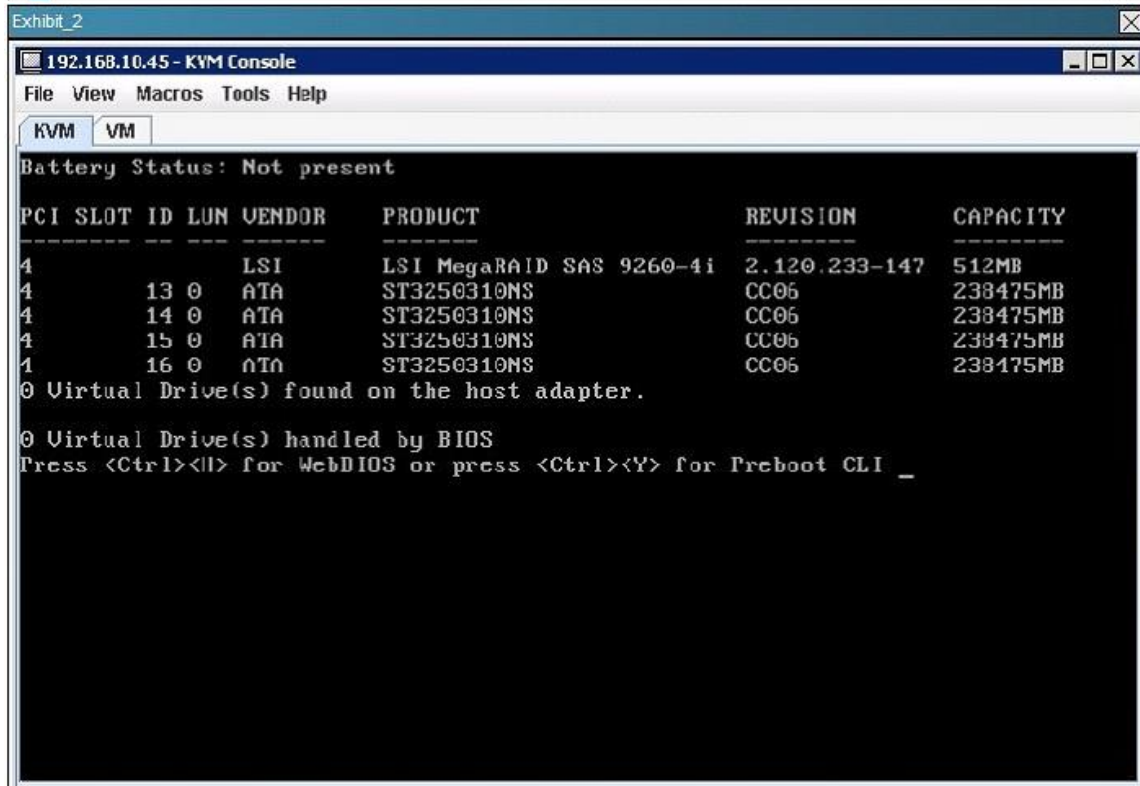
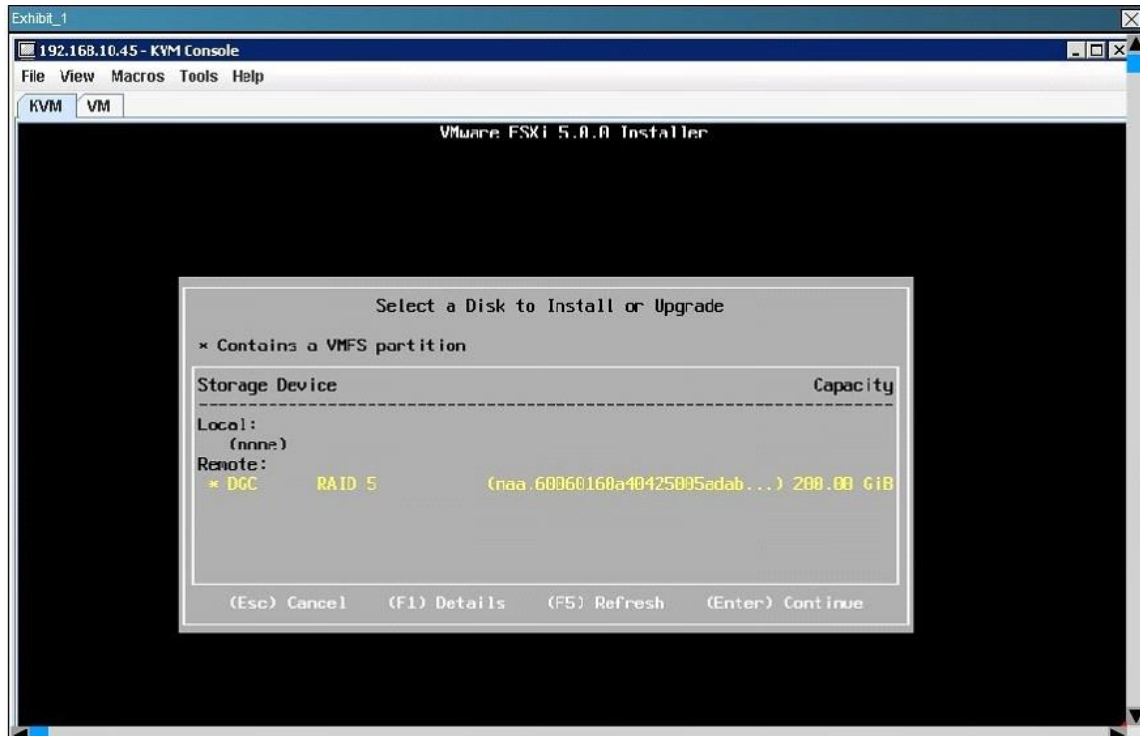
Your customer has purchased a Cisco UCS C22 M2 server equipped with an LSI MegaRAID 9260-4i, four SAS hard drives, and a Cisco UCS P81E VIC.

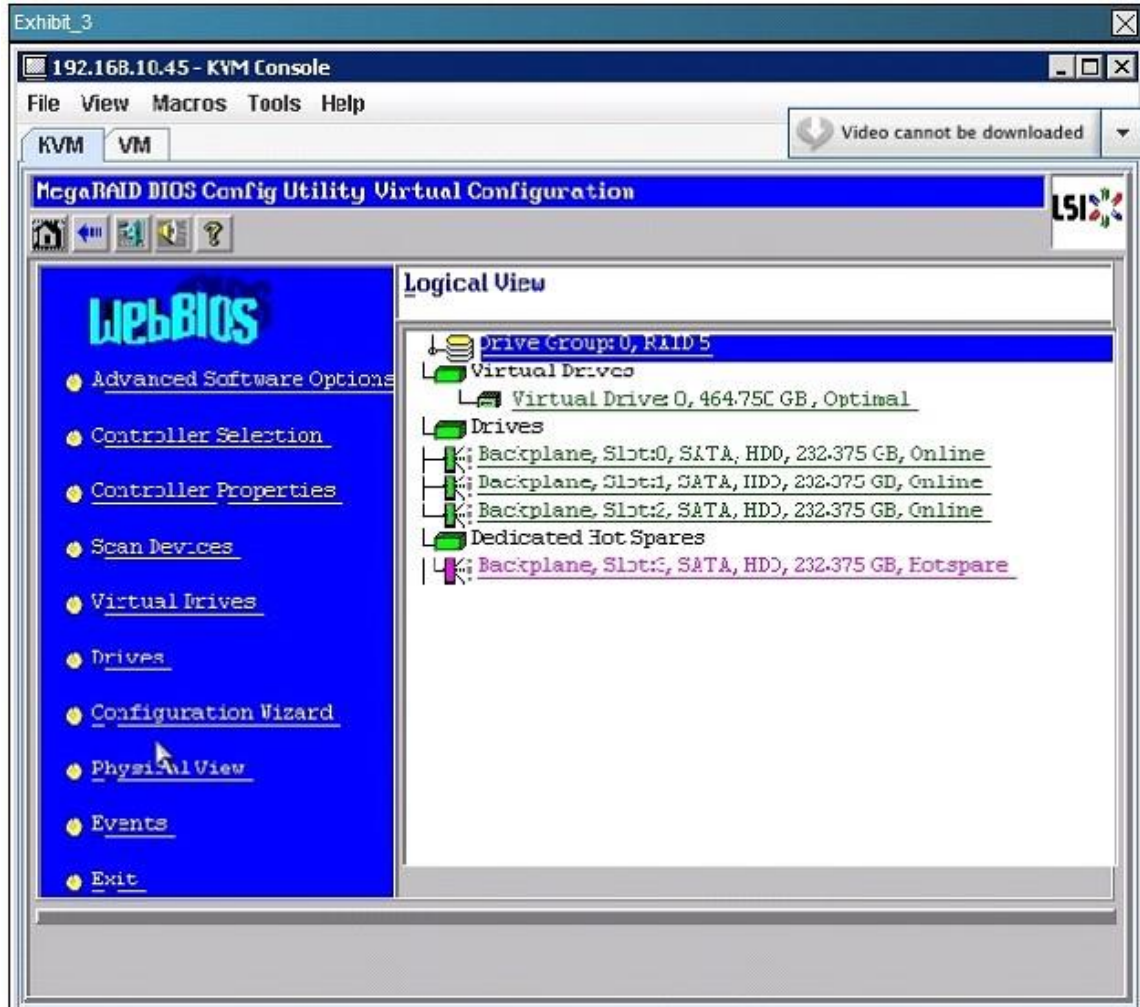
Because Fibre Channel storage is at a premium at this data center, the customer decides to boot VMware ESXi 5.0 from local storage and attach to the VMs on a VMFS LUN on a Fibre Channel storage controller with a large RAID array.

The customer is encountering issues connecting to local storage, and you are called on-site to get the server into production.

Topology







```

Exhibit_4
192.168.10.45 - KVM Console
File View Macros Tools Help
KVM VM
Battery Status: Not present

PCI SLOT ID LUN VENDOR      PRODUCT                REVISION      CAPACITY
-----
4          13 0   ATA      ST3250310NS           CC06          238475MB
4          14 0   ATA      ST3250310NS           CC06          238475MB
4          15 0   ATA      ST3250310NS           CC06          238475MB
1          16 0   ATA      ST3250310NS           CC06          238475MB
4          0   LSI      Virtual Drive          RAID5         475904MB

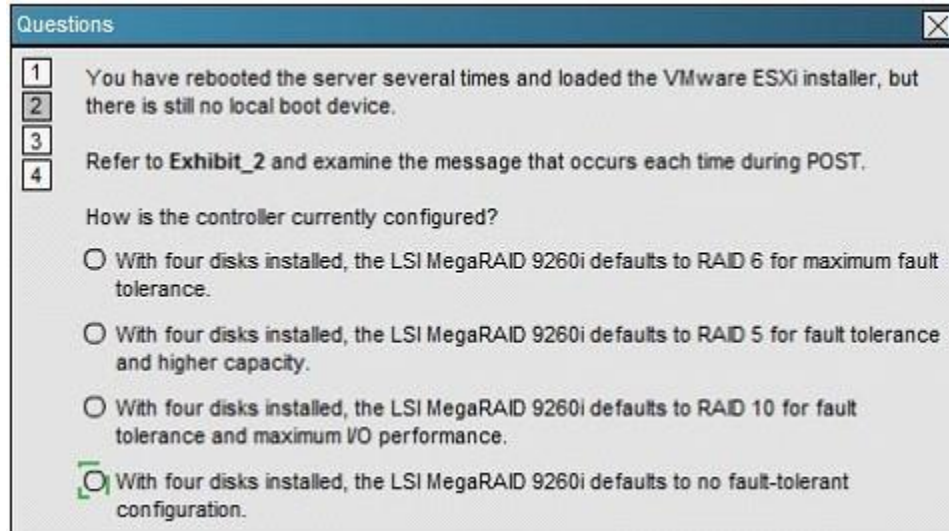
1 Virtual Drive(s) found on the host adapter.

1 Virtual Drive(s) handled by BIOS
Press <Ctrl><H> for WebBIOS or press <Ctrl><Y> for Preboot CLI
    
```

Questions

- 1 You have rebooted the server several times and loaded the VMware ESXi installer, but there is still no local boot device.
- 2
- 3 Refer to Exhibit_2 and examine the message that occurs each time during POST.
- 4 How is the controller currently configured?
 - With four disks installed, the LSI MegaRAID 9260i defaults to RAID 6 for maximum fault tolerance.
 - With four disks installed, the LSI MegaRAID 9260i defaults to RAID 5 for fault tolerance and higher capacity.
 - With four disks installed, the LSI MegaRAID 9260i defaults to RAID 10 for fault tolerance and maximum I/O performance.
 - With four disks installed, the LSI MegaRAID 9260i defaults to no fault-tolerant configuration.

Correct Answer:



Questions

1 You have rebooted the server several times and loaded the VMware ESXi installer, but there is still no local boot device.

2

3 Refer to Exhibit_2 and examine the message that occurs each time during POST.

4

How is the controller currently configured?

With four disks installed, the LSI MegaRAID 9260i defaults to RAID 6 for maximum fault tolerance.

With four disks installed, the LSI MegaRAID 9260i defaults to RAID 5 for fault tolerance and higher capacity.

With four disks installed, the LSI MegaRAID 9260i defaults to RAID 10 for fault tolerance and maximum I/O performance.

With four disks installed, the LSI MegaRAID 9260i defaults to no fault-tolerant configuration.

QUESTION 18

Refer to the exhibit. What can you deduce from this configuration?

```
interface Ethernet1/1/3
  switchport vntag max-vifs 30
  switchport mode vntag
  fabric-interface Eth1/1
  no shutdown
```

- A. This configuration is not taken from a fabric interconnect.
- B. This configuration refers to an uplink port on the fabric interconnect.
- C. Fabric link Eth1/1/3 is pinned to uplink port Eth1/1.
- D. A server in slot 3 is pinned to link 1 between IOM and the fabric interconnect.

Correct Answer: D

QUESTION 19

During a password recovery of a Cisco UCS system in a cluster configuration, what happens to blade traffic?

- A. There is no interruption to traffic, as the fabrics go down one at a time.
- B. Traffic stops flowing until the process is complete.
- C. There is no interruption to traffic because both fabrics stay up the whole time.
- D. Traffic will continue to flow, but at a limited rate until the process is complete.

Correct Answer: B