



# Cisco

## Exam 300-365

### Deploying Cisco Wireless Enterprise Networks

Version: 7.0

[ Total Questions: 61 ]

### Question No : 1

You have a VoWLAN configured for platinum QoS, WMM, and CAC. IP phones for this VoWLAN include the Nokia and Cisco Unified Wireless IP Phones 7920G (pre-v2.0 firmware), 7921G, and 7925G. The Wireless IP Phones 7921G and 7925G work properly, but the Nokia and the Wireless IP Phones 7920G associate with the WLAN but cannot place calls. What is the issue?

- A. The lowest mandatory speed in the WLAN is too high and needs to be reduced.
- B. The Cisco Unified Wireless IP Phones 7920G and Nokia IP phones do not support TSPEC.
- C. EDCA needs to be enabled on the WLAN.
- D. HCCA needs to be enabled on the WLAN.
- E. The reserved roaming bandwidth setting is set too low.
- F. The expedited bandwidth setting needs to be enabled.

**Answer: B**

### Question No : 2 CORRECT TEXT

Scenario

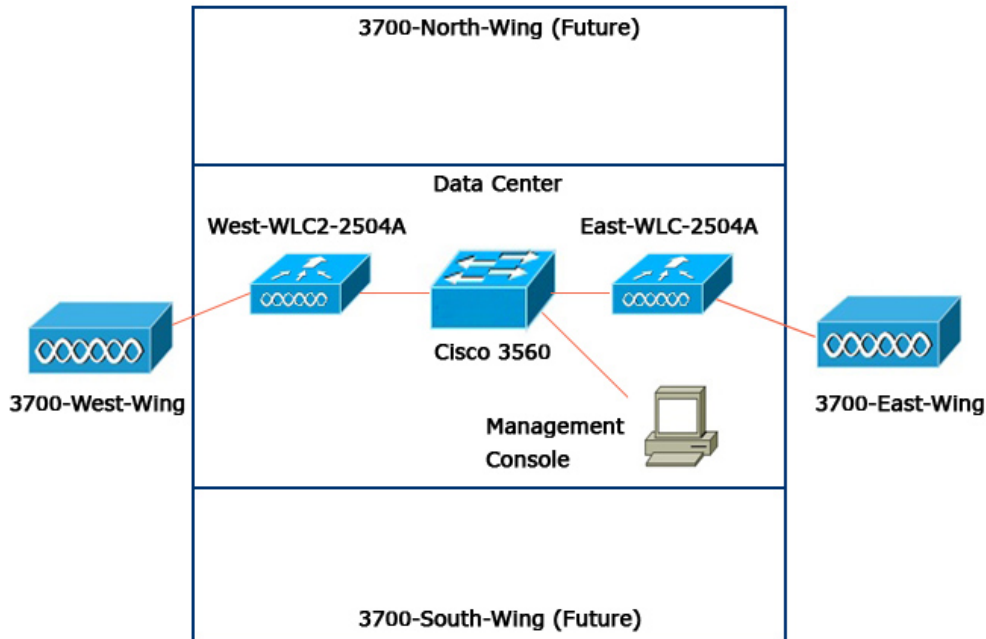
One of your colleagues has setup a test network in the lab to simulate a new building at one of your regional offices. Your team is testing AP failover. Your colleague has requested you to configure the WLCs so that in the event of a loss of one of the WLCs the other wing's APs will fail over to the remaining WLC.

The APs on the East-WLC-2504A should fail over to the West-WLC2-2504A, and the APs on the West-WLC2-2504A should fail over to the East-WLC-2504A.

Set the priority of the APs so the backup controller recognizes the join request from the higher-priority AP and if necessary disassociates a lower-priority AP to provide access to an available port.

Not all menus, tabs and features are supported.

Topology



**CISCO** MONITOR WLANs CONTROLLER WIRELESS SECURITY MANAGEMENT COMMANDS HELP FEEDBACK

Monitor

Summary

46 Access Points Supported

Cisco 2500 Series Wireless Controller

Model 2504

Controller Summary		Rogue Summary	
Management IP Address	10.10.10.10, ::/128	Active Rogue APs	14 <a href="#">Detail</a>
Software Version	8.0.110.0	Active Rogue Clients	1 <a href="#">Detail</a>
Field Recovery Image Version	7.6.101.1	Adhoc Rogues	0 <a href="#">Detail</a>
System Name	East-WLC-2504A	Rogues on Wired Network	0
Up Time	6 days, 3 hours, 39 minutes		
System Time	Tue Sep 29 08:40:35 2015		
Redundancy Mode	N/A		
Internal Temperature	+32 °C		

**Top WLANs**

Profile Name	# of Clients

802.11a Network State	Enabled	<b>Most Recent Traps</b>
802.11b/g Network State	Enabled	
Local Mobility Group	testlab	
CPU(s) Usage	0%	
Individual CPU Usage	0%/1%, 0%/1%	
Memory Usage	53%	

Access Point Summary		Top Applications	
	Total	Up	Down
802.11a/n/ac Radios	1	1	0 <a href="#">Detail</a>
802.11b/g/n Radios	1	1	0 <a href="#">Detail</a>
Dual-Band Radios	0	0	0 <a href="#">Detail</a>
All APs	1	1	0 <a href="#">Detail</a>

Application Name	Packet Count	Byte Count

This page refreshes every 30 seconds.

**Client Summary**

**CISCO** MONITOR WLANs CONTROLLER WIRELESS SECURITY MANAGEMENT COMMANDS HELP

Save Configuration | Ping | Logout | Refresh

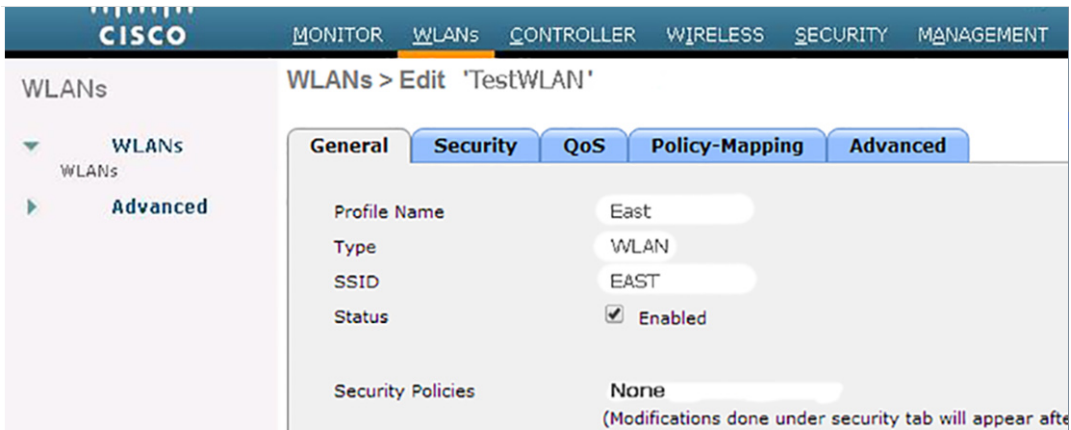
WLANs

WLANs

Advanced

Current Filter: None [\[Change Filter\]](#) [\[Clear Filter\]](#)

WLAN ID	Type	Profile Name	WLAN SSID	Admin Status	Security Policies
10	WLAN	East	EAST	Enabled	[WPA2][Auth(802.1X)]



**Foot Notes**

- 1 Web Policy cannot be used in combination with IPsec
- 2(a) FlexConnect Local Switching is not supported with IPsec, CRANITE authentication, Override Interface ACLs
- 2(b) When flexconnect local authentication is enabled, irrespective of AP on connected or standabne mode the AP will act as NAS
- 2(c) When flexconnect local authentication is disabled, AP on connected mode will use WLC as NAS and AP as NAS while it's on standabne mode
- 3 When client exclusion is enabled, a Timeout Value of zero means infinity (will require administrative override to reset excluded clients)
- 4 Client MPP is not active unless WPA2 is configured
- 5 Learn Client IP is configurable only when FlexConnect Local Switching is enabled
- 6 WMM and open or AES security should be enabled to support higher 11n rates
- 7 Value zero implies there is no restriction on maximum clients allowed.
- 8 MAC Filtering is not supported with FlexConnect Local authentication
- 9 MAC Filtering should be enabled.
- 10 Guest tunneling, Local switching, DHCP Required should be disabled.
- 11 Max-associated-clients feature and Central Assoc feature are not supported with FlexConnect Local Authentication.
- 12 VLAN based central switching is not supported with FlexConnect Local Authentication.
- 13 Enabling gtk-randomize will prevent clients from decrypting broadcast and multicast packets.
- 14 Fast Transition is supported with WPA2 and open security policy
- 15 Override Bandwidth Contracts parameters are specific to per Radio of AP, A value of zero (0) indicates that the value specified in the selected QoS p
- 17 When Diagnostic Channel is enabled, P2P Blocking Action will be assigned to Drop Action

**Answer: Pending**

**Question No : 3**

An engineer would like to capture NetFlowdata on PI. Which resource is required to allow this?

- A. Cisco MSE as NetFlow exporter
- B. Prime Infrastructure 1.0 or later
- C. Cisco NAC as NetFlow exporter
- D. Cisco ISE as NetFlow exporter

**Answer: B**

**Question No : 4**

A customer has implemented a N+1 high availability plan in a multistory building. All APs

on odd numbered floors are set as primary to WLC-A and all APs on even numbered floors are set as primary to WLC-8. Which two problems are likely to arise from this design?  
(Choose two)

- A. inconsistent CleanAir data due to multiple WLCs
- B. floor-to-floor bleed-through that causes intercontroller roaming delays
- C. AVC inconsistency due to multiple mobility group members
- D. legacy device compatibility with multiple WLC configuration that causes disconnects
- E. unpredictable AP loading during a WLC failure

Answer: A,C

**Question No : 5 DRAG DROP**

Drag the QoS values from the left and drop them in the correct descending order of priority on the right.

CS1	
CS3	
CS4	
CS6	
AF11	
AF31	
EF	

Answer:

CS1	CS6
CS3	EF
CS4	CS4
CS6	AF31
AF11	CS3
AF31	AF11
EF	CS1

**Question No : 6**

A network engineer is debugging issues with the mDNS gateway. Which type of reply should be seen in the Wireshark capture when querying for a mDNS service in the Bonjour Cache?

- A. unicast from Prime Infrastructure
- B. unicast from controller
- C. multicast from devices
- D. multicast from controller
- E. unicast from devices
- F. multicast from Prime Infrastructure

**Answer: B**

**Question No : 7**

A wireless engineer at a convention center has been asked to provision an SSID that can accommodate 4,000 users during a conference. Which interface group configuration should be used?

- A. One interface with /20 mask
- B. Two interfaces with /21 mask

- C. Four interfaces with /22 mask
- D. Eight interfaces with /23 mask

Answer: D

**Question No : 8**

Refer to Exhibit.

802.11a > Voice Parameters

**Call Admission Control (CAC)**

---

Admission Control (ACM)	<input checked="" type="checkbox"/> Enabled
Max RF Bandwidth (%)	<input type="text" value="75"/>
Reserved Roaming Bandwidth (%)	<input type="text" value="6"/>

**Traffic Stream Metrics**

---

Metrics Collection	<input type="checkbox"/>
--------------------	--------------------------

What two items need to be supported on the VoWLAN phones in order to take full advantage of this WLAN configuration? (Choose two.)

- A. APSD
- B. 802.11a
- C. 802.11e
- D. WMM
- E. 802.11r
- F. SIFS

Answer: C,D

**Question No : 9**

A network engineer for a college dormitory notices that student devices are filling up the

SP-DB and are not allowing the shared wireless printers to be discovered. Which feature can be used to reserve space in the SP-DB for the printers?

- A. mDNS-AP
- B. LSS
- C. Priority MAC
- D. sso

**Answer: C**

**Question No : 10**

A network engineer observes a spike in controller CPU overhead and overall network utilization after enabling multicast on a controller with 500 APs. What feature is necessary to correct the issue?

- A. controller IGMP snooping
- B. unicast AP Multicast Mode
- C. broadcast forwarding
- D. multicast AP Multicast Mode

**Answer: B**

**Question No : 11**

Scenario

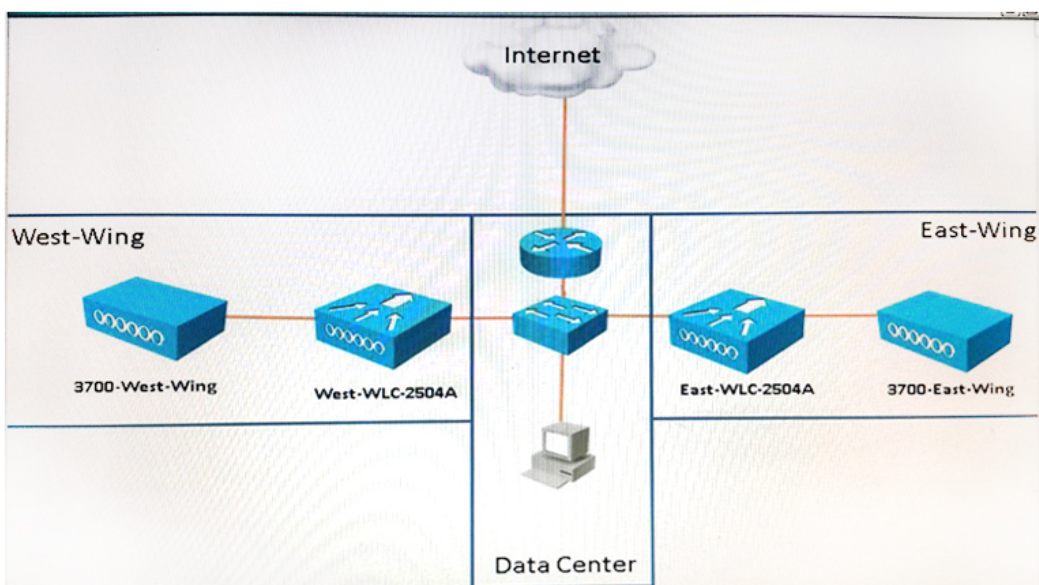
There is a problem with the East-WLC-2504A. When configuration changes are made to the Employees-East-Wing AP Group that covers the East-Wing, none

of the APs receive the updates. Refer to the exhibits to determine where the problems are.



SSID Name:	Employees
WLAN ID	10
APs:	Preconfigured on WLC
Dynamic Interface Name:	east-wing
Dynamic Interface IP Address:	172.16.1.6/24
Dynamic Interface Gateway IP Address:	172.16.1.1/24
VLAN:	22
Port Number:	1
AP Group Name:	Employees-East-Wing

Note, not all menu items, text boxes, or radio buttons are active.



What needs to be changed in the configuration of the East-WLC-2504A controller to restore functionality to the Employees-East-Wing AP Group? (Choose four.)

- A. Change the AP in the Employees-East-Wing AP Group.
- B. Change the IP Address in the east-wing interface.
- C. Change the VLAN Identifier in the east-wing interface.
- D. Enable Dynamic AP Management in the east-wing interface.
- E. Change the Port Number to 2 in the east-wing interface.
- F. Add the Primary Controller and IP address to the 3700-East-Wing AP.
- G. Change the SSID in the Employees-East-Wing AP Group.
- H. Change the Interface/Interface Group In the Employees-East-Wing AP Group.

**Answer: D,F,G,H**

### Microsoft Exams List

<a href="#">70-246 Dump PDF VCE</a>	<a href="#">70-485 Dump PDF VCE</a>	<a href="#">70-742 Dump PDF VCE</a>	<a href="#">98-366 Dump PDF VCE</a>
<a href="#">70-247 Dump PDF VCE</a>	<a href="#">70-486 Dump PDF VCE</a>	<a href="#">70-743 Dump PDF VCE</a>	<a href="#">98-367 Dump PDF VCE</a>
<a href="#">70-331 Dump PDF VCE</a>	<a href="#">70-487 Dump PDF VCE</a>	<a href="#">70-744 Dump PDF VCE</a>	<a href="#">98-368 Dump PDF VCE</a>
<a href="#">70-332 Dump PDF VCE</a>	<a href="#">70-488 Dump PDF VCE</a>	<a href="#">70-761 Dump PDF VCE</a>	<a href="#">98-369 Dump PDF VCE</a>
<a href="#">70-333 Dump PDF VCE</a>	<a href="#">70-489 Dump PDF VCE</a>	<a href="#">70-762 Dump PDF VCE</a>	<a href="#">98-372 Dump PDF VCE</a>
<a href="#">70-334 Dump PDF VCE</a>	<a href="#">70-490 Dump PDF VCE</a>	<a href="#">70-765 Dump PDF VCE</a>	<a href="#">98-373 Dump PDF VCE</a>
<a href="#">70-339 Dump PDF VCE</a>	<a href="#">70-491 Dump PDF VCE</a>	<a href="#">70-768 Dump PDF VCE</a>	<a href="#">98-374 Dump PDF VCE</a>
<a href="#">70-341 Dump PDF VCE</a>	<a href="#">70-492 Dump PDF VCE</a>	<a href="#">70-980 Dump PDF VCE</a>	<a href="#">98-375 Dump PDF VCE</a>
<a href="#">70-342 Dump PDF VCE</a>	<a href="#">70-494 Dump PDF VCE</a>	<a href="#">70-981 Dump PDF VCE</a>	<a href="#">98-379 Dump PDF VCE</a>
<a href="#">70-345 Dump PDF VCE</a>	<a href="#">70-496 Dump PDF VCE</a>	<a href="#">70-982 Dump PDF VCE</a>	<a href="#">MB2-700 Dump PDF VCE</a>
<a href="#">70-346 Dump PDF VCE</a>	<a href="#">70-497 Dump PDF VCE</a>	<a href="#">74-343 Dump PDF VCE</a>	<a href="#">MB2-701 Dump PDF VCE</a>
<a href="#">70-347 Dump PDF VCE</a>	<a href="#">70-498 Dump PDF VCE</a>	<a href="#">74-344 Dump PDF VCE</a>	<a href="#">MB2-702 Dump PDF VCE</a>
<a href="#">70-348 Dump PDF VCE</a>	<a href="#">70-499 Dump PDF VCE</a>	<a href="#">74-409 Dump PDF VCE</a>	<a href="#">MB2-703 Dump PDF VCE</a>
<a href="#">70-354 Dump PDF VCE</a>	<a href="#">70-517 Dump PDF VCE</a>	<a href="#">74-678 Dump PDF VCE</a>	<a href="#">MB2-704 Dump PDF VCE</a>
<a href="#">70-383 Dump PDF VCE</a>	<a href="#">70-532 Dump PDF VCE</a>	<a href="#">74-697 Dump PDF VCE</a>	<a href="#">MB2-707 Dump PDF VCE</a>
<a href="#">70-384 Dump PDF VCE</a>	<a href="#">70-533 Dump PDF VCE</a>	<a href="#">77-420 Dump PDF VCE</a>	<a href="#">MB2-710 Dump PDF VCE</a>
<a href="#">70-385 Dump PDF VCE</a>	<a href="#">70-534 Dump PDF VCE</a>	<a href="#">77-427 Dump PDF VCE</a>	<a href="#">MB2-711 Dump PDF VCE</a>
<a href="#">70-410 Dump PDF VCE</a>	<a href="#">70-640 Dump PDF VCE</a>	<a href="#">77-600 Dump PDF VCE</a>	<a href="#">MB2-712 Dump PDF VCE</a>
<a href="#">70-411 Dump PDF VCE</a>	<a href="#">70-642 Dump PDF VCE</a>	<a href="#">77-601 Dump PDF VCE</a>	<a href="#">MB2-713 Dump PDF VCE</a>
<a href="#">70-412 Dump PDF VCE</a>	<a href="#">70-646 Dump PDF VCE</a>	<a href="#">77-602 Dump PDF VCE</a>	<a href="#">MB2-714 Dump PDF VCE</a>
<a href="#">70-413 Dump PDF VCE</a>	<a href="#">70-673 Dump PDF VCE</a>	<a href="#">77-603 Dump PDF VCE</a>	<a href="#">MB2-715 Dump PDF VCE</a>
<a href="#">70-414 Dump PDF VCE</a>	<a href="#">70-680 Dump PDF VCE</a>	<a href="#">77-604 Dump PDF VCE</a>	<a href="#">MB2-716 Dump PDF VCE</a>
<a href="#">70-417 Dump PDF VCE</a>	<a href="#">70-681 Dump PDF VCE</a>	<a href="#">77-605 Dump PDF VCE</a>	<a href="#">MB2-717 Dump PDF VCE</a>
<a href="#">70-461 Dump PDF VCE</a>	<a href="#">70-682 Dump PDF VCE</a>	<a href="#">77-881 Dump PDF VCE</a>	<a href="#">MB2-718 Dump PDF VCE</a>
<a href="#">70-462 Dump PDF VCE</a>	<a href="#">70-684 Dump PDF VCE</a>	<a href="#">77-882 Dump PDF VCE</a>	<a href="#">MB5-705 Dump PDF VCE</a>
<a href="#">70-463 Dump PDF VCE</a>	<a href="#">70-685 Dump PDF VCE</a>	<a href="#">77-883 Dump PDF VCE</a>	<a href="#">MB6-700 Dump PDF VCE</a>
<a href="#">70-464 Dump PDF VCE</a>	<a href="#">70-686 Dump PDF VCE</a>	<a href="#">77-884 Dump PDF VCE</a>	<a href="#">MB6-701 Dump PDF VCE</a>
<a href="#">70-465 Dump PDF VCE</a>	<a href="#">70-687 Dump PDF VCE</a>	<a href="#">77-885 Dump PDF VCE</a>	<a href="#">MB6-702 Dump PDF VCE</a>
<a href="#">70-466 Dump PDF VCE</a>	<a href="#">70-688 Dump PDF VCE</a>	<a href="#">77-886 Dump PDF VCE</a>	<a href="#">MB6-703 Dump PDF VCE</a>
<a href="#">70-467 Dump PDF VCE</a>	<a href="#">70-689 Dump PDF VCE</a>	<a href="#">77-887 Dump PDF VCE</a>	<a href="#">MB6-704 Dump PDF VCE</a>
<a href="#">70-469 Dump PDF VCE</a>	<a href="#">70-692 Dump PDF VCE</a>	<a href="#">77-888 Dump PDF VCE</a>	<a href="#">MB6-705 Dump PDF VCE</a>
<a href="#">70-470 Dump PDF VCE</a>	<a href="#">70-695 Dump PDF VCE</a>	<a href="#">77-891 Dump PDF VCE</a>	<a href="#">MB6-884 Dump PDF VCE</a>
<a href="#">70-473 Dump PDF VCE</a>	<a href="#">70-696 Dump PDF VCE</a>	<a href="#">98-349 Dump PDF VCE</a>	<a href="#">MB6-885 Dump PDF VCE</a>
<a href="#">70-480 Dump PDF VCE</a>	<a href="#">70-697 Dump PDF VCE</a>	<a href="#">98-361 Dump PDF VCE</a>	<a href="#">MB6-886 Dump PDF VCE</a>
<a href="#">70-481 Dump PDF VCE</a>	<a href="#">70-698 Dump PDF VCE</a>	<a href="#">98-362 Dump PDF VCE</a>	<a href="#">MB6-889 Dump PDF VCE</a>
<a href="#">70-482 Dump PDF VCE</a>	<a href="#">70-734 Dump PDF VCE</a>	<a href="#">98-363 Dump PDF VCE</a>	<a href="#">MB6-890 Dump PDF VCE</a>
<a href="#">70-483 Dump PDF VCE</a>	<a href="#">70-740 Dump PDF VCE</a>	<a href="#">98-364 Dump PDF VCE</a>	<a href="#">MB6-892 Dump PDF VCE</a>
<a href="#">70-484 Dump PDF VCE</a>	<a href="#">70-741 Dump PDF VCE</a>	<a href="#">98-365 Dump PDF VCE</a>	<a href="#">MB6-893 Dump PDF VCE</a>

### Cisco Exams List

<a href="#">010-151 Dump PDF VCE</a>	<a href="#">350-018 Dump PDF VCE</a>	<a href="#">642-737 Dump PDF VCE</a>	<a href="#">650-667 Dump PDF VCE</a>
<a href="#">100-105 Dump PDF VCE</a>	<a href="#">352-001 Dump PDF VCE</a>	<a href="#">642-742 Dump PDF VCE</a>	<a href="#">650-669 Dump PDF VCE</a>
<a href="#">200-001 Dump PDF VCE</a>	<a href="#">400-051 Dump PDF VCE</a>	<a href="#">642-883 Dump PDF VCE</a>	<a href="#">650-752 Dump PDF VCE</a>
<a href="#">200-105 Dump PDF VCE</a>	<a href="#">400-101 Dump PDF VCE</a>	<a href="#">642-885 Dump PDF VCE</a>	<a href="#">650-756 Dump PDF VCE</a>
<a href="#">200-120 Dump PDF VCE</a>	<a href="#">400-151 Dump PDF VCE</a>	<a href="#">642-887 Dump PDF VCE</a>	<a href="#">650-968 Dump PDF VCE</a>
<a href="#">200-125 Dump PDF VCE</a>	<a href="#">400-201 Dump PDF VCE</a>	<a href="#">642-889 Dump PDF VCE</a>	<a href="#">700-001 Dump PDF VCE</a>
<a href="#">200-150 Dump PDF VCE</a>	<a href="#">400-251 Dump PDF VCE</a>	<a href="#">642-980 Dump PDF VCE</a>	<a href="#">700-037 Dump PDF VCE</a>
<a href="#">200-155 Dump PDF VCE</a>	<a href="#">400-351 Dump PDF VCE</a>	<a href="#">642-996 Dump PDF VCE</a>	<a href="#">700-038 Dump PDF VCE</a>
<a href="#">200-310 Dump PDF VCE</a>	<a href="#">500-006 Dump PDF VCE</a>	<a href="#">642-997 Dump PDF VCE</a>	<a href="#">700-039 Dump PDF VCE</a>
<a href="#">200-355 Dump PDF VCE</a>	<a href="#">500-007 Dump PDF VCE</a>	<a href="#">642-998 Dump PDF VCE</a>	<a href="#">700-101 Dump PDF VCE</a>
<a href="#">200-401 Dump PDF VCE</a>	<a href="#">500-051 Dump PDF VCE</a>	<a href="#">642-999 Dump PDF VCE</a>	<a href="#">700-104 Dump PDF VCE</a>
<a href="#">200-601 Dump PDF VCE</a>	<a href="#">500-052 Dump PDF VCE</a>	<a href="#">644-066 Dump PDF VCE</a>	<a href="#">700-201 Dump PDF VCE</a>
<a href="#">210-060 Dump PDF VCE</a>	<a href="#">500-170 Dump PDF VCE</a>	<a href="#">644-068 Dump PDF VCE</a>	<a href="#">700-205 Dump PDF VCE</a>
<a href="#">210-065 Dump PDF VCE</a>	<a href="#">500-201 Dump PDF VCE</a>	<a href="#">644-906 Dump PDF VCE</a>	<a href="#">700-260 Dump PDF VCE</a>
<a href="#">210-250 Dump PDF VCE</a>	<a href="#">500-202 Dump PDF VCE</a>	<a href="#">646-048 Dump PDF VCE</a>	<a href="#">700-270 Dump PDF VCE</a>
<a href="#">210-255 Dump PDF VCE</a>	<a href="#">500-254 Dump PDF VCE</a>	<a href="#">646-365 Dump PDF VCE</a>	<a href="#">700-280 Dump PDF VCE</a>
<a href="#">210-260 Dump PDF VCE</a>	<a href="#">500-258 Dump PDF VCE</a>	<a href="#">646-580 Dump PDF VCE</a>	<a href="#">700-281 Dump PDF VCE</a>
<a href="#">210-451 Dump PDF VCE</a>	<a href="#">500-260 Dump PDF VCE</a>	<a href="#">646-671 Dump PDF VCE</a>	<a href="#">700-295 Dump PDF VCE</a>
<a href="#">210-455 Dump PDF VCE</a>	<a href="#">500-265 Dump PDF VCE</a>	<a href="#">646-985 Dump PDF VCE</a>	<a href="#">700-501 Dump PDF VCE</a>
<a href="#">300-070 Dump PDF VCE</a>	<a href="#">500-275 Dump PDF VCE</a>	<a href="#">648-232 Dump PDF VCE</a>	<a href="#">700-505 Dump PDF VCE</a>
<a href="#">300-075 Dump PDF VCE</a>	<a href="#">500-280 Dump PDF VCE</a>	<a href="#">648-238 Dump PDF VCE</a>	<a href="#">700-601 Dump PDF VCE</a>
<a href="#">300-080 Dump PDF VCE</a>	<a href="#">500-285 Dump PDF VCE</a>	<a href="#">648-244 Dump PDF VCE</a>	<a href="#">700-602 Dump PDF VCE</a>
<a href="#">300-085 Dump PDF VCE</a>	<a href="#">500-290 Dump PDF VCE</a>	<a href="#">648-247 Dump PDF VCE</a>	<a href="#">700-603 Dump PDF VCE</a>
<a href="#">300-101 Dump PDF VCE</a>	<a href="#">500-801 Dump PDF VCE</a>	<a href="#">648-375 Dump PDF VCE</a>	<a href="#">700-701 Dump PDF VCE</a>
<a href="#">300-115 Dump PDF VCE</a>	<a href="#">600-199 Dump PDF VCE</a>	<a href="#">648-385 Dump PDF VCE</a>	<a href="#">700-702 Dump PDF VCE</a>
<a href="#">300-135 Dump PDF VCE</a>	<a href="#">600-210 Dump PDF VCE</a>	<a href="#">650-032 Dump PDF VCE</a>	<a href="#">700-703 Dump PDF VCE</a>
<a href="#">300-160 Dump PDF VCE</a>	<a href="#">600-211 Dump PDF VCE</a>	<a href="#">650-042 Dump PDF VCE</a>	<a href="#">700-801 Dump PDF VCE</a>
<a href="#">300-165 Dump PDF VCE</a>	<a href="#">600-212 Dump PDF VCE</a>	<a href="#">650-059 Dump PDF VCE</a>	<a href="#">700-802 Dump PDF VCE</a>
<a href="#">300-180 Dump PDF VCE</a>	<a href="#">600-455 Dump PDF VCE</a>	<a href="#">650-082 Dump PDF VCE</a>	<a href="#">700-803 Dump PDF VCE</a>
<a href="#">300-206 Dump PDF VCE</a>	<a href="#">600-460 Dump PDF VCE</a>	<a href="#">650-127 Dump PDF VCE</a>	<a href="#">810-403 Dump PDF VCE</a>
<a href="#">300-207 Dump PDF VCE</a>	<a href="#">600-501 Dump PDF VCE</a>	<a href="#">650-128 Dump PDF VCE</a>	<a href="#">820-424 Dump PDF VCE</a>
<a href="#">300-208 Dump PDF VCE</a>	<a href="#">600-502 Dump PDF VCE</a>	<a href="#">650-148 Dump PDF VCE</a>	<a href="#">840-425 Dump PDF VCE</a>
<a href="#">300-209 Dump PDF VCE</a>	<a href="#">600-503 Dump PDF VCE</a>	<a href="#">650-159 Dump PDF VCE</a>	
<a href="#">300-210 Dump PDF VCE</a>	<a href="#">600-504 Dump PDF VCE</a>	<a href="#">650-281 Dump PDF VCE</a>	
<a href="#">300-320 Dump PDF VCE</a>	<a href="#">640-692 Dump PDF VCE</a>	<a href="#">650-393 Dump PDF VCE</a>	
<a href="#">300-360 Dump PDF VCE</a>	<a href="#">640-875 Dump PDF VCE</a>	<a href="#">650-472 Dump PDF VCE</a>	
<a href="#">300-365 Dump PDF VCE</a>	<a href="#">640-878 Dump PDF VCE</a>	<a href="#">650-474 Dump PDF VCE</a>	
<a href="#">300-370 Dump PDF VCE</a>	<a href="#">640-911 Dump PDF VCE</a>	<a href="#">650-575 Dump PDF VCE</a>	
<a href="#">300-375 Dump PDF VCE</a>	<a href="#">640-916 Dump PDF VCE</a>	<a href="#">650-621 Dump PDF VCE</a>	
<a href="#">300-465 Dump PDF VCE</a>	<a href="#">642-035 Dump PDF VCE</a>	<a href="#">650-663 Dump PDF VCE</a>	
<a href="#">300-470 Dump PDF VCE</a>	<a href="#">642-732 Dump PDF VCE</a>	<a href="#">650-665 Dump PDF VCE</a>	
<a href="#">300-475 Dump PDF VCE</a>	<a href="#">642-747 Dump PDF VCE</a>	<a href="#">650-754 Dump PDF VCE</a>	

## HOT EXAMS

### Cisco

[100-105 Dumps VCE PDF](#)  
[200-105 Dumps VCE PDF](#)  
[300-101 Dumps VCE PDF](#)  
[300-115 Dumps VCE PDF](#)  
[300-135 Dumps VCE PDF](#)  
[300-320 Dumps VCE PDF](#)  
[400-101 Dumps VCE PDF](#)  
[640-911 Dumps VCE PDF](#)  
[640-916 Dumps VCE PDF](#)

### Microsoft

[70-410 Dumps VCE PDF](#)  
[70-411 Dumps VCE PDF](#)  
[70-412 Dumps VCE PDF](#)  
[70-413 Dumps VCE PDF](#)  
[70-414 Dumps VCE PDF](#)  
[70-417 Dumps VCE PDF](#)  
[70-461 Dumps VCE PDF](#)  
[70-462 Dumps VCE PDF](#)  
[70-463 Dumps VCE PDF](#)  
[70-464 Dumps VCE PDF](#)  
[70-465 Dumps VCE PDF](#)  
[70-480 Dumps VCE PDF](#)  
[70-483 Dumps VCE PDF](#)  
[70-486 Dumps VCE PDF](#)  
[70-487 Dumps VCE PDF](#)

### CompTIA

[220-901 Dumps VCE PDF](#)  
[220-902 Dumps VCE PDF](#)  
[N10-006 Dumps VCE PDF](#)  
[SY0-401 Dumps VCE PDF](#)