



Vendor: Cisco

Exam Code: 640-722

Exam Name: CCNA - Wireless Associate - IUNNE

Version: Demo

QUESTION 1

The IEEE 802.11n standard provides 40-MHz channels, improved MAC efficiency, and MIMO. Which three elements define the 802.11n implementation of MIMO? (Choose three.)

- A. channel bonding
- B. dynamic frequency selection
- C. maximal ratio combining
- D. packet aggregation
- E. spatial multiplexing
- F. transmit beam forming

Correct Answer: CEF

QUESTION 2

Which two statements about WiMAX technology are true? (Choose two.)

- A. WiMAX is defined by 802.11i.
- B. Typically, fixed WiMAX networks have a higher-gain directional antenna installed near the client.
- C. WiMAX is capable of working as a long-range system over several miles.
- D. WiMAX works only for licensed frequencies.

Correct Answer: BC

QUESTION 3

Which governing body analyzes the applications and environments in which wireless networks are used?

- A. EIRP
- B. ETSI
- C. FCC
- D. IEEE
- E. WiFi Alliance

Correct Answer: D

QUESTION 4

Which description best describes upfade in a multipath environment?

- A. In this situation, multiple signal paths are not sent at exactly the same time. The receiver receives a positive crest on the primary signal and a negative crest on the secondary signal.

- B. In this situation, the multiple signal paths are distorted and difficult to understand.
- C. In this situation, the multiple signal paths are weaker than they should be because the signals are out of phase with each other.
- D. In this situation, the signal is stronger than it should be because multiple signal paths are received twice at exactly the same time, which results in the multiple signals being in-phase.

Correct Answer: D

QUESTION 5

A controller is connected to a Cisco Catalyst switch. The switch port configuration looks like this:

```
interface GigabitEthernet 1/0/10
switchport
switchport trunk encapsulation dot1q
switchport trunk allowed vlan 1,20,30,50
switchport trunk native vlan 20
switchport mode trunk
```

Which controller CLI command assigns its management interface to the native VLAN interface of the Cisco Catalyst switch?

- A. config interface vlan management 0
- B. config interface vlan management 1
- C. config interface vlan management 20
- D. config interface vlan management 30
- E. config interface vlan management 50

Correct Answer: A

QUESTION 6

Which statement about an infrastructure basic service set is true according to IEEE 802.11 specifications?

- A. The set also is called an ad hoc network.
- B. The BSSID is generated from the first wireless client that starts up in the IBSS.
- C. The set enables the use of ESS.
- D. No signals are relayed from one client to another client.

Correct Answer: C

QUESTION 7

Which two factors must be considered when evaluating an RF interferer for severity?
(Choose two.)

- A. distance from the AP
- B. dBm
- C. the type of security crack being used
- D. duty cycle
- E. number of interfering IP stations in the cell
- F. duplicate SSID

Correct Answer: BD

QUESTION 8

Which two items are needed to discover the IP address of a new Cisco Aironet 1260 autonomous AP that just finished booting? (Choose two.)

- A. username = "cisco" and password = "cisco"
- B. username = "Admin" and password = "Cisco"
- C. username=Cisco and password=Cisco
- D. show int vlan1
- E. show int bvi1
- F. show int gigabitethernet0
- G. show int radio0-802.11n
- H. show int radio1-802.11n

Correct Answer: CE

QUESTION 9

Which statement correctly describes the procedure for a lightweight AP to successfully establish a connection to a controller?

- A. The AP authenticates the received Cisco WLC certificate as valid. The AP then sends its certificate to the controller.
- B. The AP sends its certificate to the controller. The AP then authenticates the received Cisco WLC certificate as valid.
- C. The AP sends its certificate to the RADIUS server. The AP then authenticates the controller certificate as valid.
- D. The AP sends its certificate to the RADIUS server. The AP then authenticates the RADIUS certificate as valid.
- E. The AP authenticates the received RADIUS server certificate as valid. The AP then sends its certificate to the RADIUS server.

- F. The AP authenticates the received RADIUS server certificate as valid. The AP then sends its certificate to the controller.

Correct Answer: B

QUESTION 10

Which two statements about the requirements to configure inter-controller roaming are true? (Choose two.)

- A. The same mobility domain names are configured across controllers.
- B. The same RF group names are configured across controllers.
- C. The same controller hardware version is configured across controllers.
- D. The same AP manager interface is configured across controllers.
- E. The same virtual interface is configured across controllers.
- F. The same controller software version is configured across controllers.

Correct Answer: AE

QUESTION 11

Which two statements best describe the LAG configuration between a Cisco WLC and a Cisco Catalyst switch? (Choose two.)

- A. The Catalyst switch should be configured for PAgP.
- B. The Catalyst switch should be configured only for Layer 2 load balancing.
- C. The Catalyst switch should be configured for "on" mode.
- D. The Cisco WLC relies on the connected switch to perform the load-balance of traffic.
- E. The Cisco WLC aggregates multiple management interfaces into a single virtual interface.

Correct Answer: CD

QUESTION 12

Which two Cisco Unified Wireless Network capabilities use information that is provided by Radio Resource Management neighbor messages in version 7.0 MR1? (Choose two.)

- A. aggressive load balancing
- B. dynamic channel assignment
- C. hybrid remote edge access point
- D. inter-controller mobility (that is, mobility groups)
- E. rogue AP classification

Correct Answer: BE

QUESTION 13

The wireless network is using controller-based APs and version 7.0 MR1. The APs appear to be connected properly to the controllers. A wireless user near one of the APs reports that they are unable to connect to the network with their pre-shared key. Which option shows the GUI path where you can check the connection status of that client?

- A. WLANs > WLAN_ID > Advanced
- B. Security > Clients
- C. Security > Advanced > Clients
- D. Monitor > Clients
- E. Wireless > 802.11b/g/n > clients

Correct Answer: D

QUESTION 14

You are about to use a hotel's guest wireless services using a wireless laptop. Which three items do you need to establish a wireless connection? (Choose three.)

- A. SSID name
- B. RF channel
- C. RF signal
- D. 802.1X/EAP credentials
- E. pre-shared key
- F. web page
- G. WPA/WPA2 settings

Correct Answer: ACF

QUESTION 15

You have an Apple IOS iPhone4 that is used on your home Wi-Fi network and a personal laptop that is used on your work's enterprise wireless network. At your office, you are unable to see the enterprise wireless network on your iPhone4. What is the most likely cause of this issue?

- A. WPA2 CPU intensive encryption is not supported on the client.
- B. WPA2 must be enabled on the client.
- C. A new profile must be created on the client.
- D. Wi-Fi must be enabled on the client.
- E. The enterprise is 2.4 GHz only.
- F. The enterprise is 5 GHz only.
- G. The RF channel must be adjusted on the client.

Correct Answer: F

QUESTION 16

When Cisco AnyConnect modules are installed on a PC, which module must be installed first?

- A. telemetry
- B. web security
- C. VPN
- D. NAM
- E. DART
- F. posture
- G. CSSC

Correct Answer: C

QUESTION 17

Which option lists the key features of Cisco Compatible Extensions v5?

- A. Roaming and real-time diagnostics, MFP, a diagnostic channel that allows troubleshooting of the client, client reporting, optional location service, and expedited bandwidth.
- B. AP assisted roam, Cisco Centralized Key Management, radio measurements, and transmit power control.
- C. CAC, UPSD, voice metrics, MBSSIDs, location, link tests, and NAC.
- D. WME, proxy ARP, EAP-FAST, and WPA2, and single sign-on.
- E. LEAP, WPA, 802.1x and VLANs per AP, TKIP, and WiFi.

Correct Answer: A

QUESTION 18

A client is attached to the Cisco Unified Wireless Network using controllers. When the client is using WPA2 and EAP authentication, where are the wireless encryption keys located during the active user session? (Choose two.)

- A. on the access point
- B. on the RADIUS server
- C. on the Cisco WCS
- D. on the client
- E. on the Cisco WLC

Correct Answer: AD

QUESTION 19

Which Extensible Authentication Protocol types are supported by the Cisco Unified Wireless Network?

- A. EAP-TLS, PEAP-MSCHAPv2, and PEAP-GTC only.
- B. LEAP and EAP-FAST only.
- C. EAP-TLS, PEAP-MSCHAPv2, PEAP-GTC, LEAP, and EAP-FAST only.
- D. Any EAP supported by the RADIUS authentication server.

Correct Answer: D

QUESTION 20

Which four parameters must be configured for local EAP-FAST on the controller? (Choose four.)

- A. authority ID
- B. authority ID Information
- C. client key
- D. PAC
- E. server key
- F. TTL for PAC
- G. monitor key
- H. NTP source

Correct Answer: ABEF

QUESTION 21

Which method of encryption does the 802.11i standard use?

- A. AES/CCMP
- B. AES/ECB
- C. AES/OCB
- D. TKIP
- E. both AES/ECB and AES/CCMP

Correct Answer: A

QUESTION 22

Which type of authentication is used initially by a controller-based AP so that a guest client can get an IP address?

- A. 802.1x

- B. EAP
- C. LEAP
- D. open authentication
- E. TLS
- F. SSL

Correct Answer: D

QUESTION 23

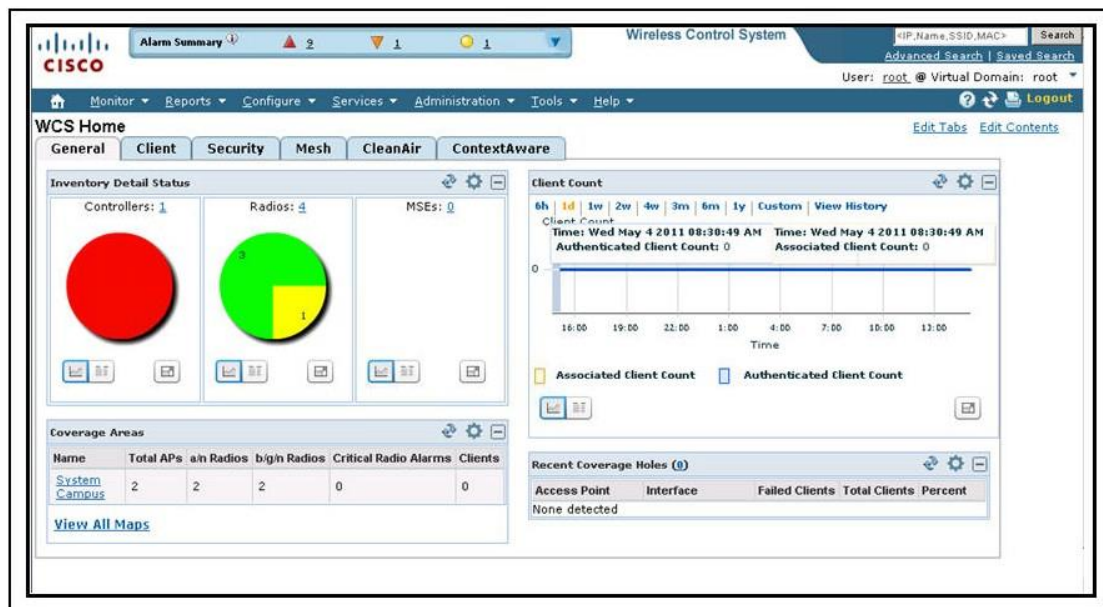
What is the maximum number of lightweight APs that can be supported from a single Cisco WCS Navigator management console with Cisco WCS and Cisco WLC running version 7.0 code?

- A. 10,000
- B. 20,000
- C. 25,000
- D. 30,000
- E. 60,000

Correct Answer: D

QUESTION 24

Refer to the exhibit. Which menu gives you access to manage background tasks in Cisco WCS?



- A. None, because the General tab provides access to the management of background tasks
- B. Monitor
- C. Configure

- D. Services
- E. Administration
- F. Tools

Correct Answer: E

QUESTION 25

Refer to the exhibit. How do improperly set Telnet/SSH parameters effect the configuration of a controller with Cisco WCS?

Add Controllers
Configure > [Controllers](#) > Add Controllers

General Parameters

Add Format Type: Device Info (dropdown)
 IP Addresses: 10.10.1.30 (comma-separated IP Addresses)
 Network Mask: 255.255.255.0
 Verify Telnet/SSH Capabilities ⓘ

SNMP Parameters ⓘ

Version: v2c (dropdown)
 Retries: 2
 Timeout: 10 (secs)
 Community: private

Telnet/SSH Parameters ⓘ

User Name: admin
 Password:
 Confirm Password:
 Retries: 3
 Timeout: 60 (secs)

OK Cancel

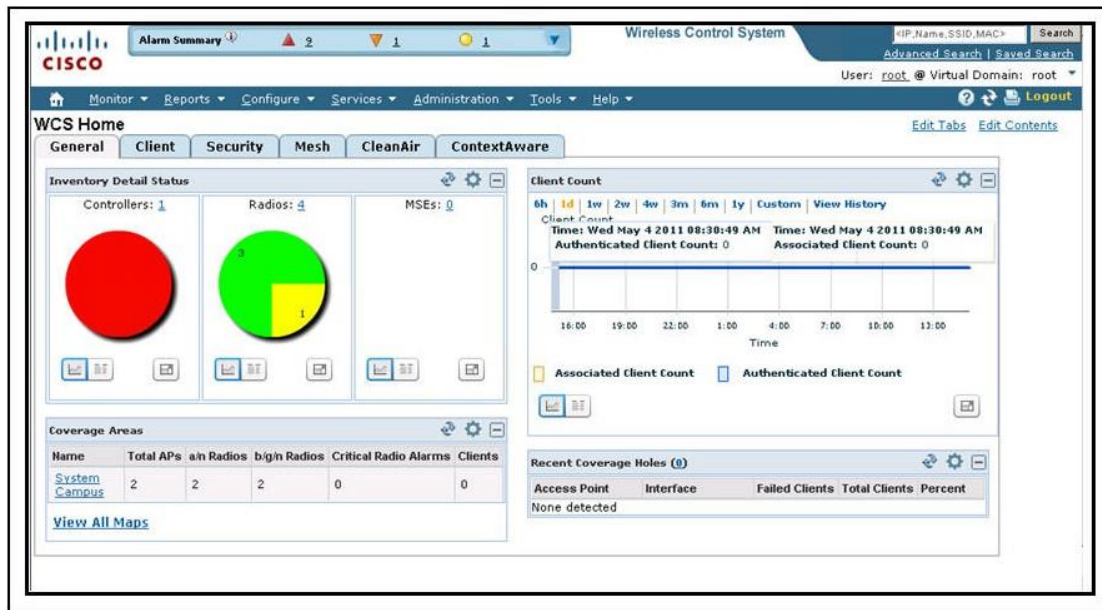
- A. The CLI and GUI management of the controller both fail because Cisco WCS checks these credentials before opening a session.
- B. The Telnet/SSH username must have sufficient privileges to execute commands in CLI templates.
- C. The GUI management of the controller fails because the Cisco WCS uses the Telnet/SSH parameters to login to the controller.
- D. The controller remains configured in the Cisco WCS, but no management is possible through

GUI from other client browsers.

Correct Answer: B

QUESTION 26

Refer to the exhibit. Which GUI item do you click to configure maps with APs in Cisco WCS?



- A. Configure
- B. Client
- C. CleanAir
- D. Services
- E. Administration
- F. Monitor

Correct Answer: F

QUESTION 27

Refer to the exhibit. Which two options does this icon represent about the status of the respective AP on a Cisco WCS version 7.0 map? (Choose two.)



- A. The 802.11a/n radio is administratively disabled.
- B. The 802.11a/n radio has a minor fault.

- C. The 802.11a/n radio has a major fault.
- D. The 802.11b/g/n radio is administratively disabled.
- E. The 802.11b/g/n radio has a minor fault.
- F. The 802.11b/g/n radio has a major fault.

Correct Answer: CD

QUESTION 28

What is the difference between the IEEE, the WiFi Alliance, and the FCC, ETSI, and TELEC?

- A. The IEEE and FCC are responsible for the standards that apply to wireless networks. The WiFi Alliance, ETSI, and TELEC are the governmental agencies that regulate compliance with local standards.
- B. The IEEE is responsible for Layer 1 and Layer 2 protocols. The WiFi Alliance is responsible for interoperability testing. The FCC, ETSI, and TELEC are responsible for radio frequency and transmission power-level regulations and standards in the U.S., Europe, and Japan.
- C. The IEEE is responsible for Layer 1 and Layer 2 protocols. The FCC, ETSI, and TELEC are responsible for interoperability testing and compliance. The WiFi Alliance is responsible for radio frequency and transmission power-level regulations and standards on a global basis.
- D. The IEEE and FCC are responsible for the Layer 3 protocol support and frequency and powerlevel regulations in the United States. ETSI and TELEC are responsible for frequency and powerlevel regulations in Europe and Japan. The WiFi Alliance is responsible to interoperability testing.

Correct Answer: B

QUESTION 29

What is an MBSSID?

- A. a virtual AP configured on a physical AP that share a single physical device, which is one half-duplex radio
- B. a set of physical APs configured in a BSA to form cells that are controlled by a single controller
- C. the group of clients that are allowed to gain access to one or more SSIDs configured in an AP
- D. the identified overlap area between two cells, which identifies the clients that are operating in that area at any given time

Correct Answer: A

QUESTION 30

You are testing a new autonomous Cisco Aironet 1260 AP that has booted for the first time on the existing corporate network, which includes voice, data, and location services. How do you reach the GUI of the AP?

- A. HTTP to 10.0.0.1.
- B. HTTP to 192.168.1.1.
- C. HTTP to the DHCP address.
- D. HTTPS to 10.0.0.1.
- E. HTTPS to the 192.168.1.1.
- F. HTTPS to the DHCP address.

Correct Answer: C

EnsurePass.com Members Features:

1. Verified Answers researched by industry experts.
2. Q&As are downloadable in PDF and VCE format.
3. 98% success Guarantee and **Money Back** Guarantee.
4. Free updates for **180** Days.
5. **Instant Access to download the Items**

View list of All Exam provided:

<http://www.ensurepass.com/certifications?index=A>

To purchase Lifetime Full Access Membership click here:

<http://www.ensurepass.com/user/register>

Valid Discount Code for 2015: JREH-G1A8-XHC6

To purchase the HOT Exams:

<u>Cisco</u>		<u>CompTIA</u>		<u>Oracle</u>	<u>VMWare</u>	<u>IBM</u>
<u>100-101</u>	<u>640-554</u>	<u>220-801</u>	<u>LX0-101</u>	<u>1Z0-051</u>	<u>VCAD510</u>	<u>C2170-011</u>
<u>200-120</u>	<u>200-101</u>	<u>220-802</u>	<u>N10-005</u>	<u>1Z0-052</u>	<u>VCP510</u>	<u>C2180-319</u>
<u>300-206</u>	<u>640-911</u>	<u>BR0-002</u>	<u>SG0-001</u>	<u>1Z0-053</u>	<u>VCP550</u>	<u>C4030-670</u>
<u>300-207</u>	<u>640-916</u>	<u>CAS-001</u>	<u>SG1-001</u>	<u>1Z0-060</u>	<u>VCAC510</u>	<u>C4040-221</u>
<u>300-208</u>	<u>640-864</u>	<u>CLO-001</u>	<u>SK0-003</u>	<u>1Z0-474</u>	<u>VCP5-DCV</u>	<u>RedHat</u>
<u>350-018</u>	<u>642-467</u>	<u>ISS-001</u>	<u>SY0-301</u>	<u>1Z0-482</u>	<u>VCP510PSE</u>	<u>EX200</u>
<u>352-001</u>	<u>642-813</u>	<u>JK0-010</u>	<u>SY0-401</u>	<u>1Z0-485</u>		<u>EX300</u>
<u>400-101</u>	<u>642-832</u>	<u>JK0-801</u>	<u>PK0-003</u>	<u>1Z0-580</u>		
<u>640-461</u>	<u>642-902</u>			<u>1Z0-820</u>		

