



**Vendor:** Cisco

**Exam Code:** 642-617

**Exam Name:** Deploying Cisco ASA Firewall Solutions  
(FIREWALL v1.0)

**Version:** DEMO

**QUESTION 1**

Using the default modular policy framework global configuration on the Cisco ASA, how does the Cisco ASA process outbound HTTP traffic?

- A. HTTP flows are not permitted through the Cisco ASA, because HTTP is not inspected by default.
- B. HTTP flows match the inspection\_default traffic class and are inspected using HTTP inspection.
- C. HTTP outbound traffic is permitted, but all return HTTP traffic is denied.
- D. HTTP flows statefully inspected using TCP stateful inspection.

**Answer: D**

**QUESTION 2**

Drag and Drop

Click and drag the supported Cisco ASA QoS option on the left to the correct description on the right. (Some of the options on the left are not used.)

traffic shaping	can be applied in the input or output direction
WRED	can be applied only to the class-default traffic class
class-based weighted fair queuing	can optionally define the queue limit and the transmission ring limit
priority queuing	
traffic policing	

**Answer:**

Click and drag the supported Cisco ASA QoS option on the left to the correct description on the right. (Some of the options on the left are not used.)

	traffic policing
WRED	traffic shaping
class-based weighted fair queuing	priority queuing

### QUESTION 3

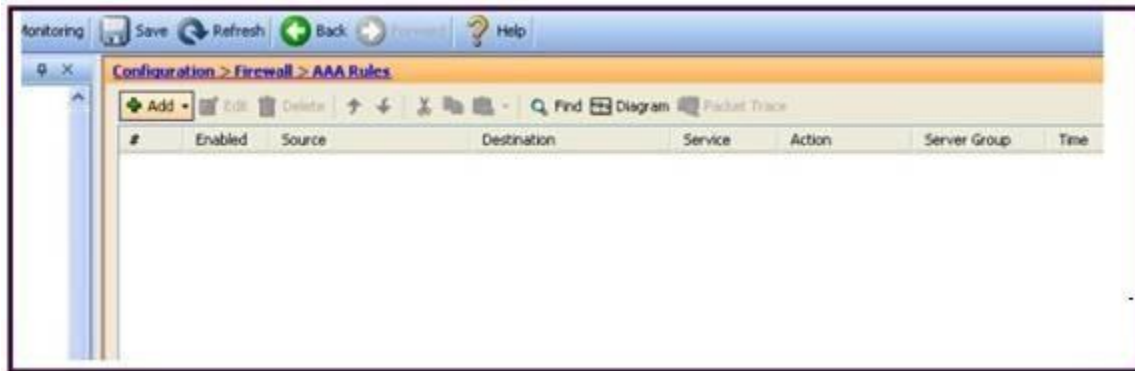
By default, which traffic can pass through a Cisco ASA that is operating in transparent mode without explicitly allowing it using an ACL?

- A. ARP
- B. BPDU
- C. CDP
- D. OSPF multicasts
- E. DHCP

**Answer:** A

### QUESTION 4

Refer to the exhibit. Which Cisco ASA feature can be configured using this Cisco ASDM screen?

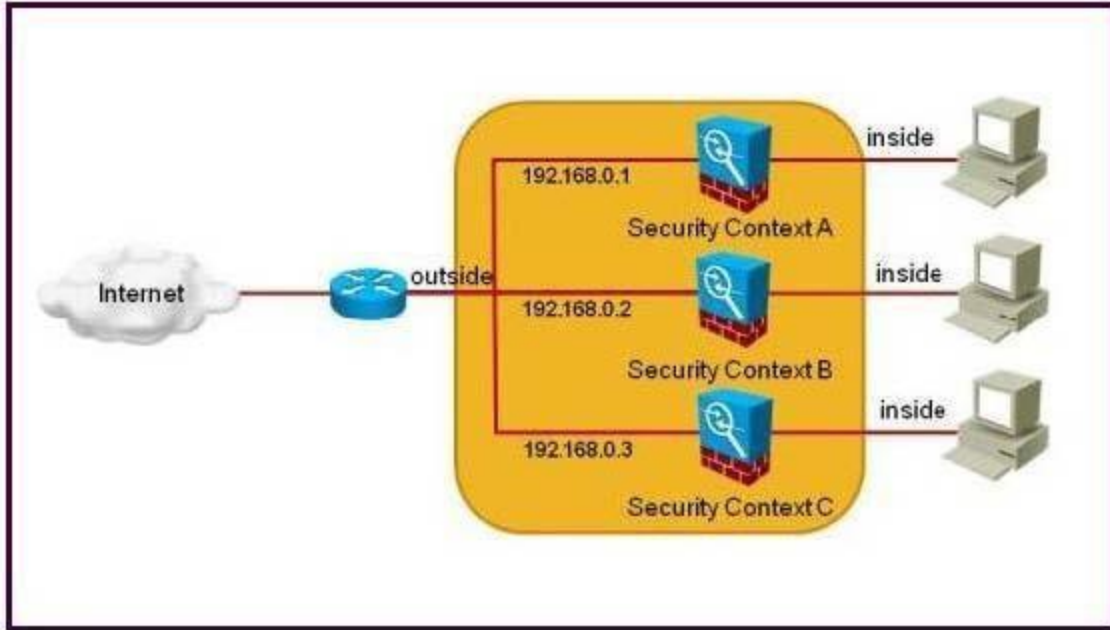


- A. Cisco ASA command authorization using TACACS+
- B. AAA accounting to track serial, ssh, and telnet connections to the Cisco ASA
- C. Exec Shell access authorization using AAA
- D. cut-thru proxy
- E. AAA authentication policy for Cisco ASDM access

**Answer:** D

### QUESTION 5

Refer to the exhibit. The Cisco ASA is dropping all the traffic that is sourced from the internet and is destined to any security context inside interface. Which configuration should be verified on the Cisco ASA to solve this problem?



- A. The Cisco ASA has NAT control disabled on each security context.
- B. The Cisco ASA is using inside dynamic NAT on each security context.
- C. The Cisco ASA is using a unique MAC address on each security context outside interface.
- D. The Cisco ASA is using a unique dynamic routing protocol process on each security context.
- E. The Cisco ASA packet classifier is configured to use the outside physical interface to assign the packets to each security context.

**Answer: C**

**QUESTION 6**

Which four types of ACL object group are supported on the Cisco ASA (release 8.2)? (Choose four.)

- A. protocol
- B. network
- C. port
- D. service
- E. icmp-type
- F. host

**Answer: ABDE**

**QUESTION 7**

Refer to the exhibit. Which two statements about the class maps are true? (Choose two.)

Name	Match Conditions		
	Match Type	Criterion	Value
_default_GoToMyPC-tunnel	AND	Request Arguments Request URI	R _default_GoToMyPC-tunne R _default_GoToMyPC-tunne
_default_aim-messenger		Request Header Field (host)	R _default_aim-messenger
_default_firethru-tunnel	AND	Request Header Field (host) Request URI	R _default_firethru-tunnel_1 R _default_firethru-tunnel_2
_default_gator		Request Header Field (user-agent)	R _default_gator
_default_gnu-http-tunnel	AND	Request Arguments Request URI	R _default_gnu-http-tunnel_ R _default_gnu-http-tunnel_1
_default_http-tunnel		Request URI	R _default_http-tunnel
_default_httpport-tunnel		Request Header Field (host)	R _default_httpport-tunnel
_default_kazaa		Response Header Field Count (_default_.. > 0	
_default_msn-messenger		Response Header Field (content-type)	R _default_msn-messenger
_default_shoutcast-tunneling-pr...		Request Header Field (_default_icy-meta...	R _default_shoutcast-tunneli
_default_windows-media-player-...		Request Header Field (user-agent)	R _default_windows-media-pl
_default_yahoo-messenger		Request Body	R _default_yahoo-messenger

- A. These class maps are referenced within the global policy by default for HTTP inspection.
- B. These class maps are all type inspect http class maps.
- C. These class maps classify traffic using regular expressions.
- D. These class maps are Layer 3/4 class maps.
- E. These class maps are used within the inspection\_default class map for matching the default inspection traffic.

**Answer: BE**

### QUESTION 8

Refer to the exhibit. A Cisco ASA in transparent firewall mode generates the log messages seen in the exhibit. What should be configured on the Cisco ASA to allow the denied traffic?

```

%ASA-2-106006: Deny inbound UDP from 10.1.1.1/520 to 224.0.0.9/520 on interface outside
%ASA-2-106006: Deny inbound UDP from 192.168.1.1/520 to 224.0.0.9/520 on interface inside

```

- A. extended ACL on the outside and inside interface to permit the multicast traffic
- B. EtherType ACL on the outside and inside interface to permit the multicast traffic
- C. stateful packet inspection
- D. static ARP mapping
- E. static MAC address mapping

**Answer: A**

### QUESTION 9

Which three statements about traffic shaping capability on the Cisco ASA are true? (Choose three.)

- A. Traffic shaping can be applied to all outgoing traffic on a physical interface or in the case of the Cisco ASA 5505, on a VLAN
- B. Traffic shaping can be applied in the input or output direction.

- C. Traffic shaping can cause jitter and delay.
- D. You can configure both traffic shaping and priority queueing on the same interface.
- E. Traffic shaping is not supported on the Cisco ASA 5580.

**Answer:** ACE

#### **QUESTION 10**

Refer to the exhibit. Which statement about the policy map named test is true?

```
class-map http
  match port tcp eq 21
class-map ftp
  match port tcp eq 21
policy-map test
  class http
    inspect http
  class ftp
    inspect ftp
```

- A. Only HTTP inspection will be applied to the TCP port 21 traffic.
- B. Only FTP inspection will be applied to the TCP port 21 traffic.
- C. Both HTTP and FTP inspections will be applied to the TCP port 21 traffic.
- D. No inspection will be applied to the TCP port 21 traffic, because the http class map configuration conflicts with the ftp class map
- E. All FTP traffic will be denied, because the FTP traffic will fail the HTTP inspection.

**Answer:** C

#### **QUESTION 11**

By default, which access rule is applied inbound to the inside interface?

- A. All IP traffic is denied.
- B. All IP traffic is permitted.
- C. All IP traffic sourced from any source to any less secure network destinations is permitted.
- D. All IP traffic sourced from any source to any more secure network destinations is permitted

**Answer:** C

#### **QUESTION 12**

In which type of environment is the Cisco ASA MPF set connection advanced-options tcp-statebypass option the most useful?

- A. SIP proxy
- B. WCCP
- C. BGP peering through the Cisco ASA
- D. asymmetric traffic flow
- E. transparent firewall

**Answer: D**

**QUESTION 13**

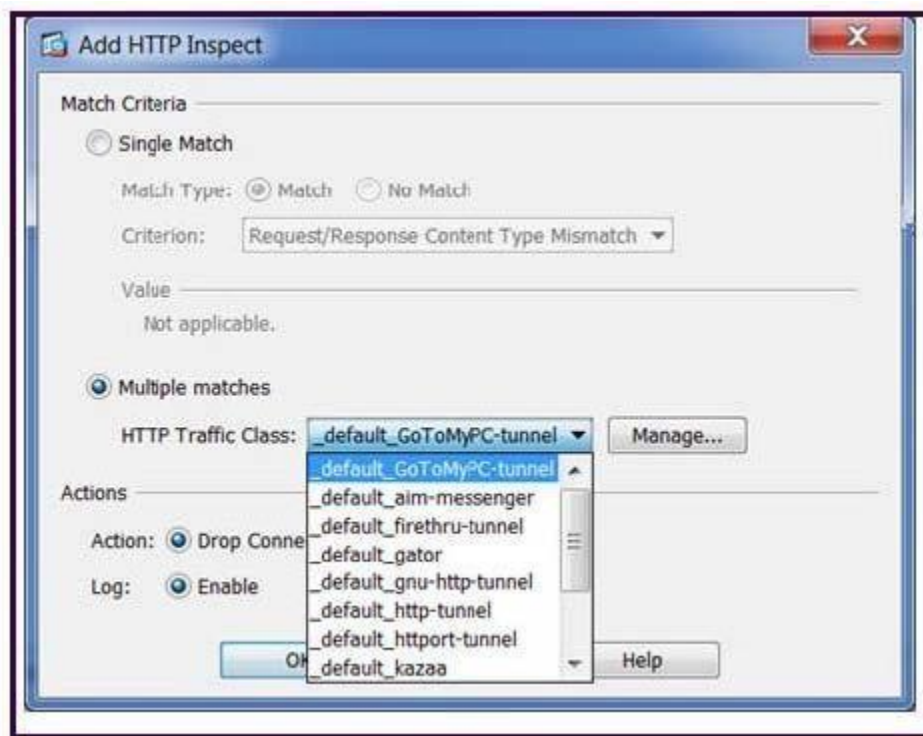
Which Cisco ASA platform should be selected if the requirements are to support 35,000 connections per second, 600,000 maximum connections, and traffic shaping?

- A. 5540
- B. 5550
- C. 5580-20
- D. 5580-40

**Answer: B**

**QUESTION 14**

Refer to the exhibit. What is the resulting CLI command?



- A. match requesturi regex \_default\_GoToMyPC-tunnel  
drop-connection log
- B. match regex \_default\_GoToMyPC-tunnel  
drop-connection log
- C. class\_default\_GoToMyPC-tunnel  
drop-connection log
- D. match class-map \_default\_GoToMyPC-tunnel  
drop-connection log

**Answer: C**

**QUESTION 15**

A customer is ordering a number of Cisco ASAs for their network. For the remote or home office, they are purchasing the Cisco ASA 5505. When ordering the licenses for their Cisco ASAs, which two licenses must they order that are "platform specific" to the Cisco ASA 5505? (Choose two.)

- A. AnyConnect Essentials license
- B. per-user Premium SSL VPN license
- C. VPN shared license
- D. internal user licenses
- E. Security Plus license

**Answer: DE**