



**Exam Code:** 642-691

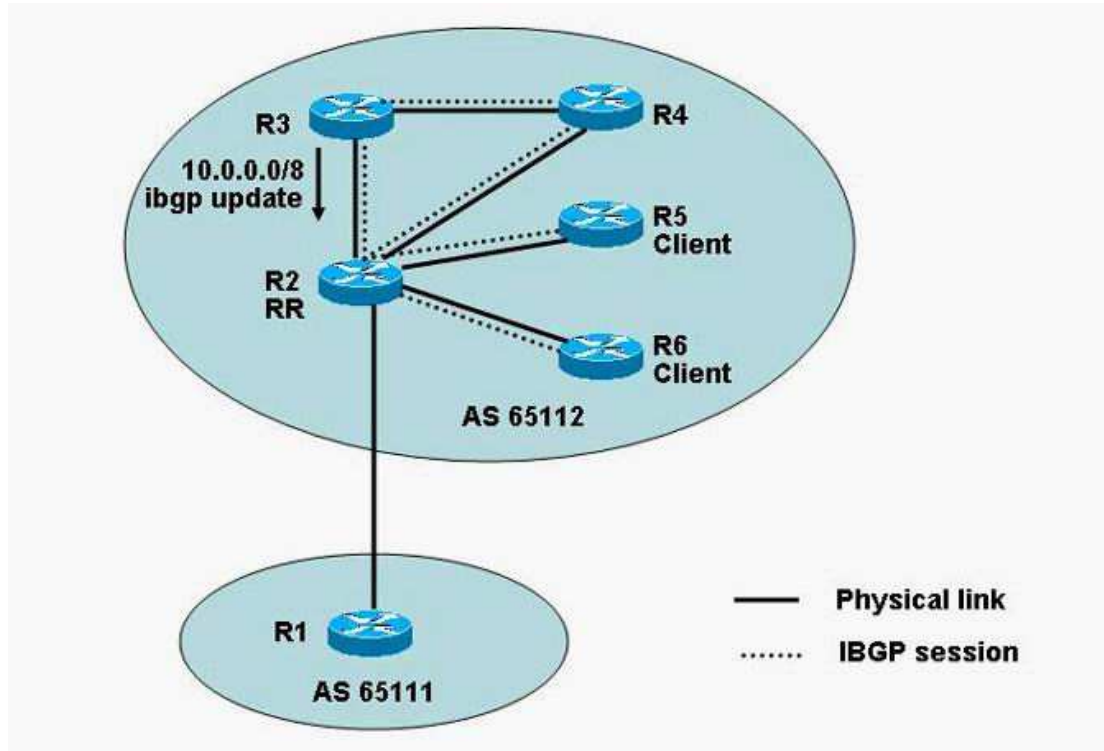
**Exam Name:** CCIP BGP + MPLS Exam (BGP + MPLS)

**Vendor:** CISCO

**Version:** DEMO

## Part: A

1: Based on the network diagram shown in the exhibit, both R5 and R6 are clients of the R2 RR. When the 10.0.0.0/8 iBGP update from R3 is received by the R2 RR, which router(s) will R2 reflect the update to?



- A.R1 only
- B.R5 and R6
- C.R5, R6 and R1
- D.R4, R5 and R6
- E.R4, R5, R6 and R1
- F.to no other router

**Correct Answers: C**

2: Based on this configuration, which two peering router neighbor statements are correct? (Choose two.)  
router bgp 50001 neighbor 192.168.1.1 remote-as 50001 neighbor 10.1.1.1 remote-as 50002  
neighbor 10.1.1.1 local-as 50003 ! output omitted

- A.EBGP - neighbor 10.1.1.2 remote-as 50003
- B.EBGP - neighbor 10.1.1.2 remote-as 50001
- C.EBGP - neighbor 10.1.1.2 remote-as 50001 and neighbor 10.1.1.2 local-as 50003
- D.IBGP - neighbor 192.168.1.2 remote-as 50001
- E.IBGP - neighbor 192.168.1.2 remote-as 50003
- F.IBGP - neighbor 192.168.1.2 remote-as 50003 and neighbor 192.168.1.2 local-as 50001

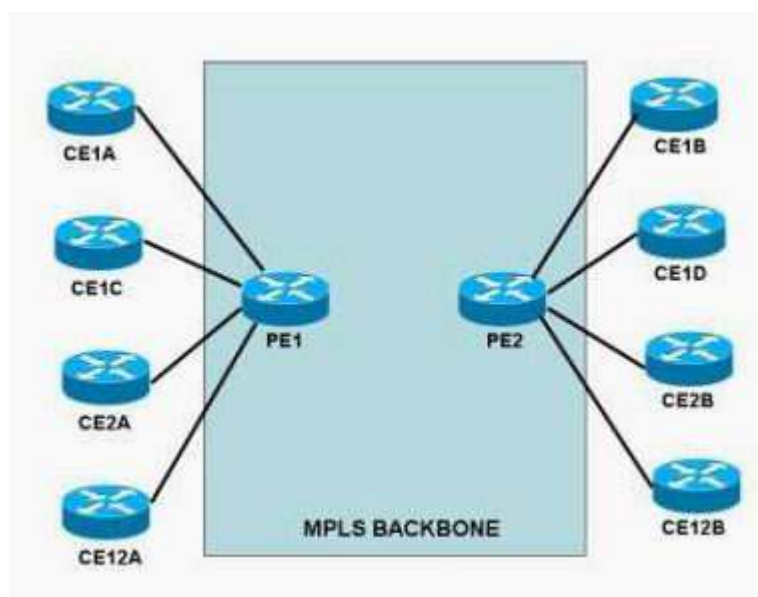
**Correct Answers: C D**

3: Which two statements about a transit AS are correct? (Choose two.)

- A. A transit AS has eBGP connection(s) to only one external AS.
- B. Routes between ASs are always exchanged via eBGP.
- C. A transit AS uses an IGP like OSPF or ISIS to propagate the external networks within the transit AS.
- D. Core routers within a transit AS normally use default routing to reach the external networks.
- E. iBGP sessions can be established between non directly connected routers.

**Correct Answers: B E**

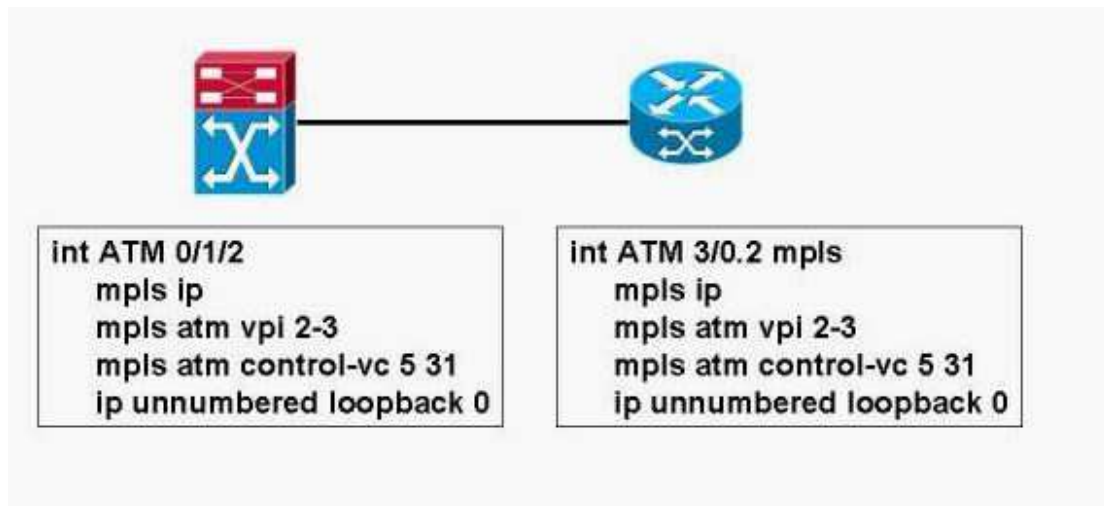
4: Refer to the exhibit and the following connectivity requirements. How many different VRFs are required? Sites CE1A, CE1B, CE1C, and CE1D require connectivity among them. Sites CE2A and CE2B require connectivity between them. Site CE12A requires connectivity to sites CE1A, CE1B, CE1C, CE1D, and CE12B. Site CE12B requires connectivity to sites CE2A, CE2B, and CE12A.



- A. 2 VRFs
- B. 3 VRFs
- C. 4 VRFs
- D. 6 VRFs
- E. 8 VRFs
- F. 10 VRFs

**Correct Answers: C**

5: Refer to the exhibit. A diagram of a router connected to an MPLS-enabled ATM switch via an LC-ATM MPLS interface, and a partial configuration for the MPLS-enabled ATM switch and router are shown. Which statement describes what is incorrect about the configuration shown?



- A.CEF has not been enabled on the router.
- B.The VPI range of 2-3 is invalid.
- C.The control VPI/VCI has not been set to 0/32 on the router.
- D.VC-merge has not been enabled on the ATM switch interface.
- E.The router has not been configured to specifically use LDP.

**Correct Answers: A**

6: When using MPLS unicast IP forwarding, what will happen if an LSR receives an incoming labeled packet but the LSR can't find that incoming label in its LFIB?

- A.The packet will be forwarded using the FIB.
- B.The packet will be forwarded using the LIB.
- C.The packet will be process switched by performing a route lookup in the routing table.
- D.The packet will be forwarded using the LFIB with an imp-null outgoing label.
- E.The packet will be dropped even if the IP destination exists in the FIB.

**Correct Answers: E**

7: Refer to the exhibit. Based on the show outputs, which condition could be preventing the P1 router from establishing TDP adjacency with its neighbor over the s0/0.211 and s0/0.212 subinterfaces?

```

P1#sh mpls ldp neighbor

P1#sh mpls interfaces
Interface          IP          Tunnel  Operational
Serial0/0.211     Yes (tdp)   No      Yes
Serial0/0.212     Yes (tdp)   No      Yes

```

- A.The s0/0.211 and s0/0.212 subinterfaces line protocol are in the down state.
- B.The P1 router cannot establish a TCP session with its neighbors.
- C.The P1 router is missing the mpls label protocol LDP command.

D.The show mpls tdp neighbor command needs to be used to view the TDP neighbor status.

**Correct Answers: B**

9: What is the correct command to set the BGP scanner interval to two minutes?

A.bgp scan-time 2

B.bgp scan-time 120

C.bgp scan-time 2 60

D.The maximum scanning interval cannot exceed one minute.

**Correct Answers: D**

10: Given the AS-path of (51002 51003) 51001 i from the show ip bgp output, what is the origin?

A.AS 51001

B.AS 51002

C.AS 51003

D.(51002 51003)

E.IGP

F.IBGP

**Correct Answers: E**