



Vendor: Microsoft

Exam Code: 70-246

**Exam Name: Private Cloud Monitoring and Operations with
System Center 2012**

Version: Demo

QUESTION 1

Your company has a private cloud that is managed by using a System Center 2012 infrastructure. The network contains seven servers. The servers are configured as shown in the following table.

Server name	Server role
Server1	Virtual Machine Manager (VMM) management server
Server2	Virtualization host
Server3	Virtualization host
Server4	Virtualization host
Server5	Configuration Manager site server
Server6	Configuration Manager software update point
Server7	File server

You need to recommend a solution to apply Windows updates to the virtualization hosts. The solution must meet the following requirements:
 Approve Windows updates from the VMM Administrator Console.
 Store information about Windows update installations in Configuration Manager reports.
 What should you do first?

- A. From the VMM Administrator Console, add Server6 as a host server, and then install the Configuration Manager agent on Server1.
- B. On Server7, install Windows Server Update Services (WSUS), and then install the Configuration Manager agent on Server1.
- C. On Server7, install Windows Server Update Services (WSUS), and then install the Configuration Manager agent on all of the virtualization hosts.
- D. From the VMM Administrator Console, add Server6 as an update server, and then install the Configuration Manager agent on all of the virtualization hosts.

Correct Answer: D

QUESTION 2

Your company has a private cloud that contains a System Center 2012 R2 infrastructure. You have a management server named Server1 that has Operations Manager installed. You have a management server named Server2 that has Virtual Machine Manager (VMM) installed. You need to monitor network devices by using Operations Manager. The solution must meet the following requirements:

- Only provide the health status of devices located on physical networks.
- Only include devices that are one hop away from a managed host.
- Only include devices that are part of the private cloud.

What should you use?

- A. The Fabric Health Dashboard
- B. The Microsoft System Center Advisor (SCA)
- C. The Network Vicinity Dashboard
- D. The Application Summary Dashboard

Correct Answer: A

QUESTION 3

Your company has a private cloud that is managed by using a System Center 2012 Operations Manager infrastructure. The network contains two servers named Server1 and Server2 that run Windows Server 2008 R2. The private cloud contains two servers. The servers are configured as shown in the following table.

Server name	Configuration	Network segment name
Server1	Audit Collection Services (ACS) collector	Network1
Server2	Audit Collection Services (ACS) forwarder	Network2

The network segments are separated by a firewall. All of the TCP ports from 1 to 1024 are allowed on the firewall. You need to ensure that Server2 can send security events to Server1. What should you do?

- A. From the firewall, allow TCP 5723 from Network2 to Network1.
- B. Deploy an Operations Manager gateway server.
- C. From the firewall, allow TCP 51909 from Network2 to Network1.
- D. From the firewall, allow TCP 51909 from Network1 to Network2.
- E. Deploy an SMTP smart host.
- F. From the firewall, allow TCP 5723 from Network1 to Network2.

Correct Answer: C

QUESTION 4

Hotspot Question

Your company has a private cloud that contains a System Center 2012 R2 infrastructure. You plan to use service level objectives (SLOs) to monitor the network resources. In the table below, identify which type of SLO should be used to achieve each SLO goal. Make only one selection in each row.

SLO	Monitor state SLO	Collection rule SLO
Availability	<input type="radio"/>	<input type="radio"/>
Performance	<input type="radio"/>	<input type="radio"/>
Events	<input type="radio"/>	<input type="radio"/>
Security	<input type="radio"/>	<input type="radio"/>

Correct Answer:

SLO	Monitor state SLO	Collection rule SLO
Availability	<input checked="" type="radio"/>	<input type="radio"/>
Performance	<input type="radio"/>	<input checked="" type="radio"/>
Events	<input type="radio"/>	<input checked="" type="radio"/>
Security	<input type="radio"/>	<input checked="" type="radio"/>

QUESTION 5

Drag and Drop Questions

Your company has a private cloud that contains a System Center 2012 infrastructure. Audit Collection Services (ACS) is enabled. A server named Server1 has Operations Manager installed. You upgrade Operations Manager on Server1 and the ACS collector to System Center 2012 R2. You need to ensure that agents that have been installed by using a push installation are upgraded. The solution must ensure that ACS is enabled on the agents. Which three actions should you perform in sequence? To answer, move the appropriate actions from the list of actions to the answer area and arrange them in the correct order.

Actions	Answer Area
<input type="text" value="Approve the update for each agent."/>	
<input type="text" value="Begin the update process for each agent."/>	
<input type="text" value="Enable ACS on the agents."/>	
<input type="text" value="Run momagent.msi on each managed computer."/>	
<input type="text" value="Disable ACS on the agents."/>	

Correct Answer:

Actions	Answer Area
Approve the update for each agent.	Approve the update for each agent.
Begin the update process for each agent.	Begin the update process for each agent.
Enable ACS on the agents.	Enable ACS on the agents.
Run momagent.msi on each managed computer.	
Disable ACS on the agents.	

QUESTION 6

Your network contains an Active Directory domain named contoso.com that connects to a Windows Azure environment. You deploy System Center 2012 R2 Data Protection Manager (DPM) to the domain. You need to ensure that you can use DPM to back up to the Windows Azure environment. Which three actions should you perform? Each correct answer presents part of the solution.

- A. From Windows Azure, create an endpoint.
- B. On the DPM server, allow inbound traffic on TCP port 135.
- C. Install the Windows Azure Backup agent.
- D. Install a certificate on the DPM server and the upload the certificate to Windows Azure.
- E. Create a backup vault.

Correct Answer: CDE

QUESTION 7

Drag and Drop Questions

You have a System Center 2012 R2 infrastructure that has Operations Manager installed. Your company is testing a custom application named App1. App1 is deployed to a test server named Server1. Server1 runs Windows Server 2012 R2. You push the Operations Manager agent to Server1 and you start to receive alerts from Server1. You need to give a team of developers historical traces of App1. The developers will store the traces in Team Foundation Server (TFS). Which three actions should you perform in sequence? To answer, move the appropriate actions from the list of actions to the answer area and arrange them in the correct order.

Actions	Answer Area
Configure an Alert Attachment discovery rule.	
Import the Alert Attachment Management Pack.	
Configure an IntelliTrace collection.	
Import the IntelliTrace Profiling Management Pack.	
Import the System Center Management Pack for Windows Server Operating System.	

Correct Answer:

Actions	Answer Area
Configure an Alert Attachment discovery rule.	Import the Alert Attachment Management Pack.
Import the Alert Attachment Management Pack.	Import the IntelliTrace Profiling Management Pack.
Configure an IntelliTrace collection.	Configure an IntelliTrace collection.
Import the IntelliTrace Profiling Management Pack.	
Import the System Center Management Pack for Windows Server Operating System.	

QUESTION 8

Your company has a private cloud that contains a System Center 2012 R2 infrastructure. You have a server named Server1 that runs Windows Server 2012 R2. Server1 hosts a Java-based application.

You need to ensure that you can monitor exceptions generated by the application.

Which three actions should you perform? Each correct answer presents part of the solution.

- A. Deploy the Java Application Performance Monitoring agent to Server1.
- B. Import the Management Pack for Java Application Performance Monitoring (APM).
- C. Deploy JavaBeans to Server1.
- D. Import the Management Pack for Java Enterprise Edition (JEE).
- E. Deploy JavaBeans to the Operations Manager server.

Correct Answer: ABD

QUESTION 9

Your network contains an Active Directory domain named contoso.com. The domain contains a domain controller named DC1 and a member server named Server1.

You have a server named Server2 that is a member of a workgroup. All servers run Windows Server 2012 R2.

Server1 has System Center 2012 R2 Operations Manager installed. DC1 is configured as an enterprise certification authority (CA). Server1 and DC1 are located on the internal network. Server2 is located on a perimeter network.

You need to monitor Server2 by using Operations Manager.

Which three actions should you perform? Each correct answer presents part of the solution.

- A. Request and install a certificate on Server2, and then import the certificate to Server1.
- B. Run the Discovery Wizard on Server1.
- C. Open port UDP 161 and UDP 162 on the firewall between the internal network and the perimeter network.
- D. Open port TCP 5723 on the firewall between the internal network and the perimeter network.
- E. Manually install the Microsoft Monitoring Agent on Server2.
- F. Request and install a certificate on Server1, and then import the certificate to Server2.

Correct Answer: ADE

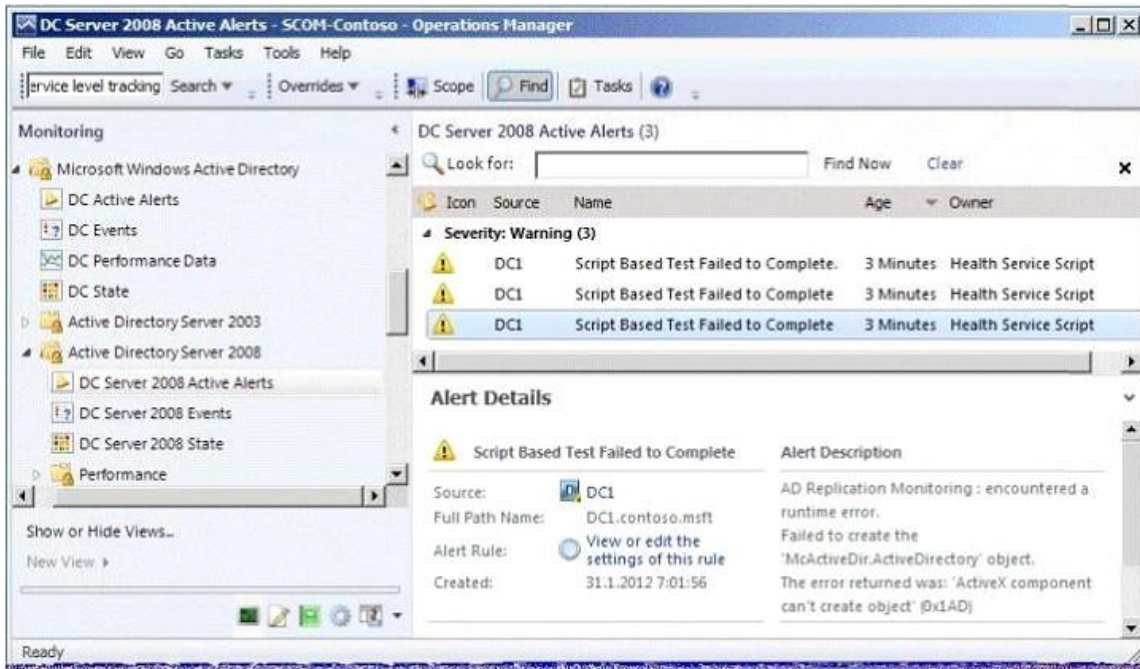
QUESTION 10

Your network contains an Active Directory domain named contoso.com. The domain contains a domain controller named DC1 and a server named Server1.

You install the management server role on Server1.

You install the Operations Manager agent on DC1.

You run the Operations Manager console and discover the active alerts shown in the exhibit. (Click the Exhibit button.)



You need to resolve the active alerts. What should you do?

- A. On DC1, install MOMADAdmin.exe.
- B. On Server1, install OomADs.msi.
- C. On Server1, install MOMADAdmin.exe.
- D. On DC1, install OomADs.msi.

Correct Answer: D

QUESTION 11

Hotspot Question

You have a System Center 2012 R2 infrastructure that contains three servers. The servers are configured as shown in the following table.

Server name	Component
Server1	Service Manager
Server2	Orchestrator
Server3	Virtual Machine Manager (VMM)

You need to create a self-service request offering that will allow users to provision new virtual machines.

On which server should you perform each of the following actions?
To answer, select the appropriate server for each action in the answer area.

Answer Area

Create a connector.

▼
Server1
Server2
Server3

Install the Virtual Machine Manager console.

▼
Server1
Server2
Server3

Deploy the System Center Integration Pack for System Center 2012 R2 Virtual Machine Manager (VMM).

▼
Server1
Server2
Server3

Correct Answer:

Answer Area

Create a connector.

▼
Server1
Server2
Server3

Install the Virtual Machine Manager console.

▼
Server1
Server2
Server3

Deploy the System Center Integration Pack for System Center 2012 R2 Virtual Machine Manager (VMM).

▼
Server1
Server2
Server3