



Vendor: Microsoft

Exam Code: 70-342

**Exam Name: Microsoft Advanced Solutions of Microsoft
Exchange Server 2013**

Version: Demo

Topic 1, Fabrikam, Inc

Overview

General Overview

Fabrikam, Inc., is a plastics manufacturer.

Fabrikam has an Exchange Server organization that contains only servers that have Exchange Server 2013 installed.

Physical Locations

Fabrikam has two main offices. The main offices are located in Tampa and Charlotte. The company has 8, 000 users in each office.

Existing Environment

Active Directory Environment

Fabrikam has an Active Directory forest that contains one domain named fabrikam.com. Each office is configured as an Active Directory site.

The network contains four subnets. The subnets are configured as shown in the following table.

Subnet name	Active Directory site	Subnet
Subnet1	Tampa	192.168.1.0/24
Subnet2	Tampa	192.168.2.0/24
Subnet3	Charlotte	192.168.10.0/24
Subnet4	Charlotte	192.168.20.0/24

All of the traffic from Subnet1 is routable to Subnet3. All of the traffic from Subnet2 is routable to Subnet4.

All client computers are on Subnet1 and Subnet3 only. Subnet 192.168.1.0/24 and subnet 168.10.0/24 are assigned as the MAPI network.

The network contains four domain controllers. The domain controllers are configured as shown in the following table.

Server name	Configuration	Office
DC1	<ul style="list-style-type: none"> All of the FSMO roles Global catalog server Enterprise certificate authority (CA) Active Directory Rights Management Services (AD RMS) 	Tampa
DC2	Global catalog server	Tampa
DC3	Global catalog server	Charlotte
DC4	Global catalog server	Charlotte

Network Infrastructure

The network contains the following components:

- Two 10-gigabits per second WAN links that connect the Tampa office and the Charlotte office. The links have a latency of less than 15 ms.
- One IP-PBX that is located in the Tampa office. The IP-PBX can use only unencrypted communications.
- An Internet connection in the Tampa office and an Internet connection the Charlotte office.

Exchange Environment

The network contains six servers that have Exchange Server 2013 installed. The servers are configured as shown in the following table.

Server name	Role	Office
EX1	Client Access server	Tampa
EX2	Mailbox server	Tampa
EX3	Mailbox server	Tampa
EX4	Client Access server	Charlotte
EX5	Mailbox server	Charlotte
EX6	Mailbox server	Charlotte

The Exchange Server environment has the following configurations:

- Two data loss prevention (DLP) policies named DLP_Finance and DLP_PII. DLP_Finance is based on a template named Financial Data - U.S. DLP_PII is based on a template named PII (U.S.).
- A mailbox database named UM that hosts only Unified Messaging (UM)-enabled mailboxes and is replicated between the Mailbox servers in the Tampa office only.
- A database availability group (DAG) named DAG1 that contains EX2, EX3, EX5, and EX6. DAG1 is configured to use DHCP to obtain an IP address.
- A Send connector named Tampa SMTP that uses SMTP1 as a smart host. The cost of the Tampa SMTP connector is 10.
- Mailbox servers in the Tampa office that provide outbound SMTP services to the Internet.
- A UM dial plan named UM1.
- An SMTP relay device named SMTP2 in the Charlotte office.
- An SMTP relay device named SMTP1 in the Tampa office.
- No client access services are published to the Internet.

Requirements

Exchange Server Issues

The current Exchange Server environment has the following issues:

- Due to power failures, the Exchange servers unexpectedly fail, causing databases to fail over. During the database failovers, the preferred database is not activated, causing an unexpected distribution of active databases.
- An IRM template named No Print or Screenshot is deployed, but the template fails to prevent users from taking screenshots of email messages.

Technical Requirements

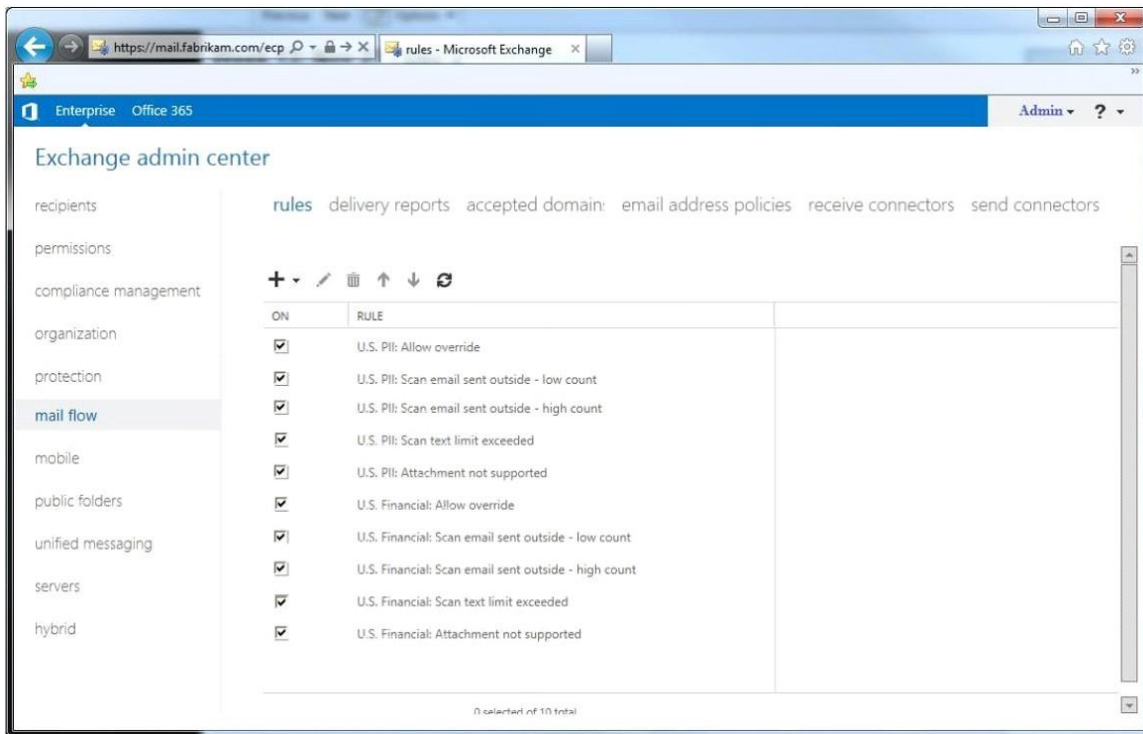
You identify the following technical requirements:

- Assign a static IP address to DAG1.

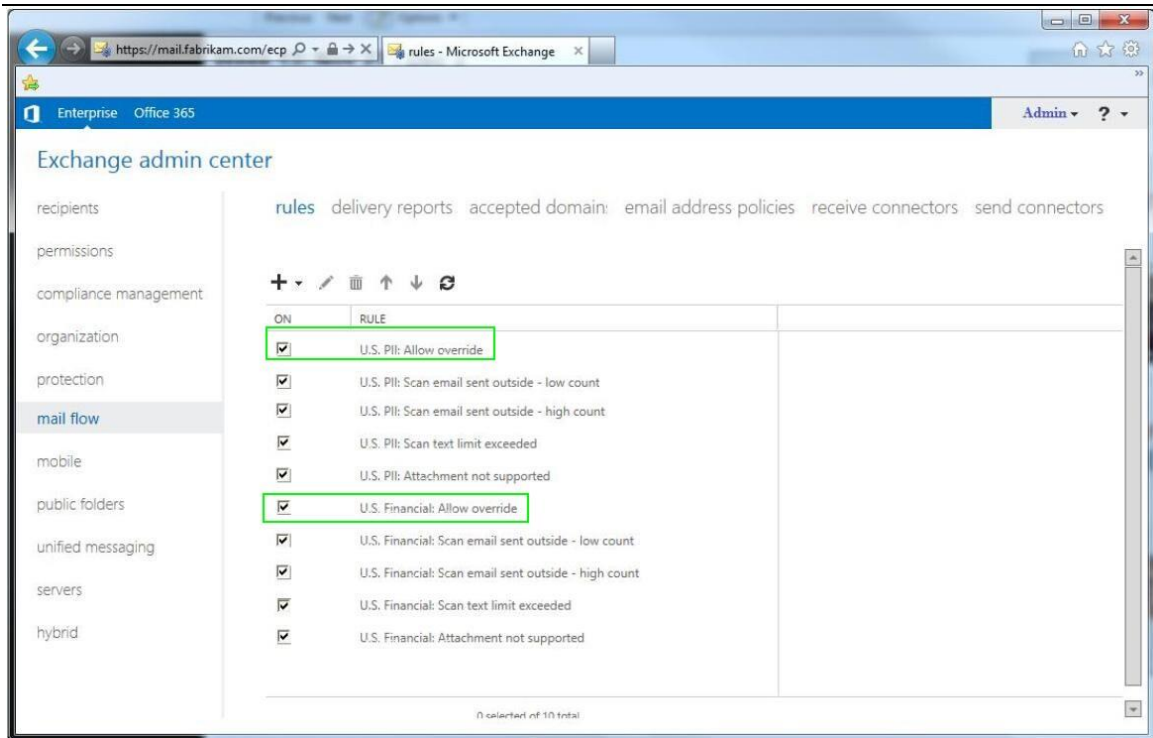
- Block all personally identifiable information (PII) data and financial data without exception.
- Prevent the forwarding of email messages sent by users who have a value of Legal in their Department field.
- Ensure that the members of a group named HR1 can search all of the mailboxes for sensitive email content.
- Use Information Rights Management (IRM) to protect all of the voice mails left for the telephone number of the human resource (HR) department.
- Implement an archiving policy that moves all of the email messages from the mailbox folders to an Archive mailbox after 30 days and permanently deletes all of the email messages after 365 days.

QUESTION 1
HOTSPOT

You need to configure transport rules to meet the technical requirements for the PII data and the financial data. How should you configure the rules? To answer, disable the appropriate rule or rules in the answer area.



Correct Answer:



QUESTION 2

The Internet link in the Tampa office will be unavailable during the weekend. You need to ensure that all outbound email messages are sent from the Charlotte office during the planned outage. What should you do?

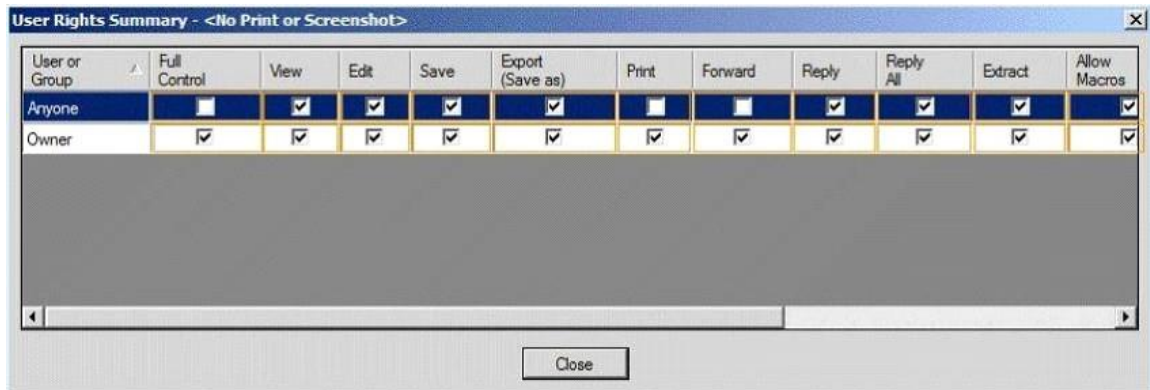
- A. Modify the cost of the Tampa SMTP Send connector.
- B. Create a new mail exchanger (MX) record named SMTP2.fabrikam.com in the internal DNS zone.
- C. Modify the smart host of the Tampa SMTP Send connector.
- D. Modify the preference value of the fabrikam.com mail exchanger (MX) records.

Correct Answer: C

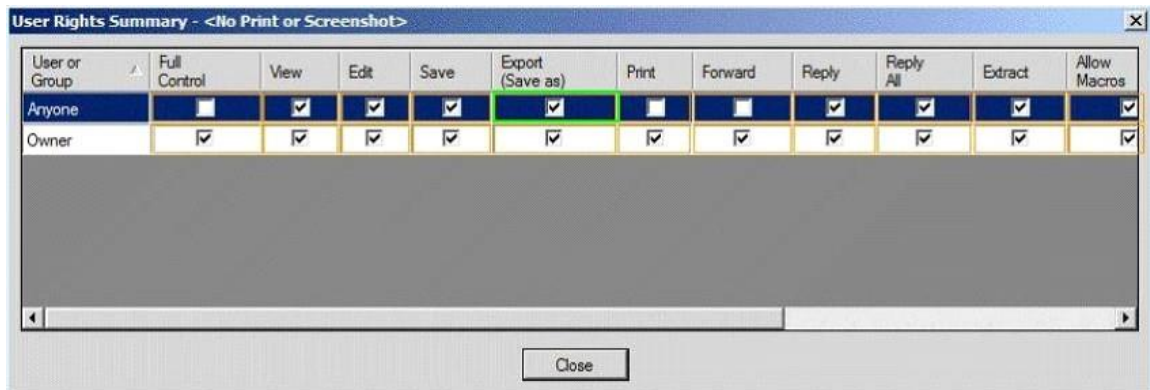
QUESTION 3

HOTSPOT

You need to resolve the IRM template issue. Which user right should you modify? To answer, select the appropriate user right in the answer area.



Correct Answer:



QUESTION 4

You need to recommend a solution for the HR voice mail. The solution must meet the security requirements. What should you recommend?

- Create a UM mailbox policy and associate the policy to UM1. Configure the voice mail protection settings of the UM mailbox policy. Create an auto attendant and link the auto attendant to UM1.
- Create a UM mailbox policy and associate the policy to a new dial plan. Configure the voice mail protection settings of the UM mailbox policy. Create an auto attendant and link the auto attendant to the new dial plan.
- Create a UM mailbox policy and associate the policy to a new dial plan. Configure the voice mail protection settings of the UM mailbox policy. Assign the UM mailbox policy to the mailbox of the HR department.
- Create a UM mailbox policy and associate the policy to UM1. Configure the voice mail protection settings of the UM mailbox policy. Assign the UM1 mailbox policy to the mailbox of the HR department.

Correct Answer: D

QUESTION 5

You need to recommend an Outlook protection rule solution to meet the technical requirements. What should you recommend?

- A. Create an Outlook protection rule and filter the rule based on the FromDepartment property. Apply the Do Not Forward protection template to the rule and enable the UserCanOverride setting.
- B. Create an Outlook protection rule and filter the rule based on the FromDepartment property. Apply the Do Not Forward protection template to the rule and disable the UserCanOverride setting.
- C. Create an Outlook protection rule and filter the rule based on the SentTo property. Apply the Do Not Forward protection template to the rule and disable the UserCanOverride setting.
- D. Create an Outlook protection rule and filter the rule based on the SentTo property. Apply the Do Not Forward protection template to the rule and enable the UserCanOverride setting.

Correct Answer: B

QUESTION 6

HOTSPOT

You plan to create two retention tags named Tag1 and Tag2. Tag1 will be used to move email messages to the Archive mailbox. Tag2 will be used to delete the email messages. You need to identify which settings must be configured in the retention tags to meet the technical requirements. How should you configure each retention tag? To answer, configure the appropriate options for each retention tag setting in the answer area.

Setting	Tag1	Tag2
Retention tag type	<input type="text"/>	<input type="text"/>
Retention action	<input type="text"/>	<input type="text"/>
Retention period	<input type="text"/>	<input type="text"/>

Setting	Tag1	Tag2
Retention tag type	<input type="text"/> All Inbox Personal	<input type="text"/> All Inbox Personal
Retention action	<input type="text"/> Move to archive mailbox Permanently delete Delete and allow recovery	<input type="text"/> Move to archive mailbox Permanently delete Move to archive mailbox
Retention period	<input type="text"/> After 30 days After 335 days After 365 days	<input type="text"/> After 30 days After 335 days After 365 days

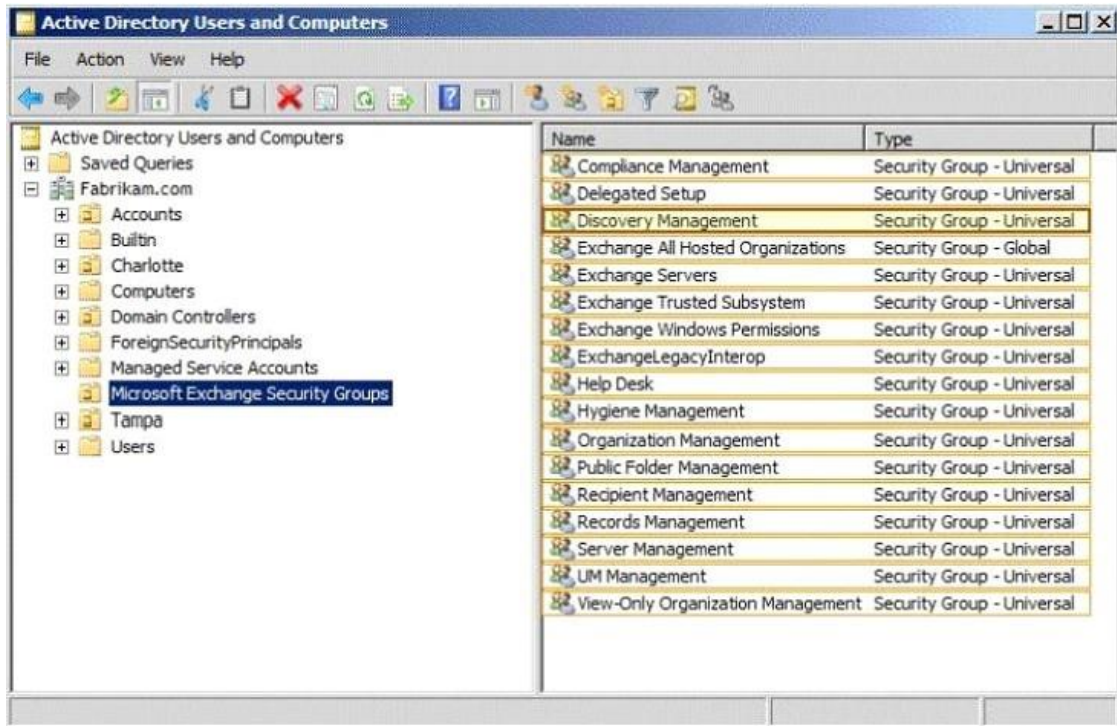
Correct Answer:

Setting	Tag1	Tag2
Retention tag type	<input type="text"/> All Inbox Personal	<input type="text"/> All Inbox Personal
Retention action	<input type="text"/> Move to archive mailbox Permanently delete Delete and allow recovery	<input type="text"/> Move to archive mailbox Permanently delete Move to archive mailbox
Retention period	<input type="text"/> After 30 days After 335 days After 365 days	<input type="text"/> After 30 days After 335 days After 365 days

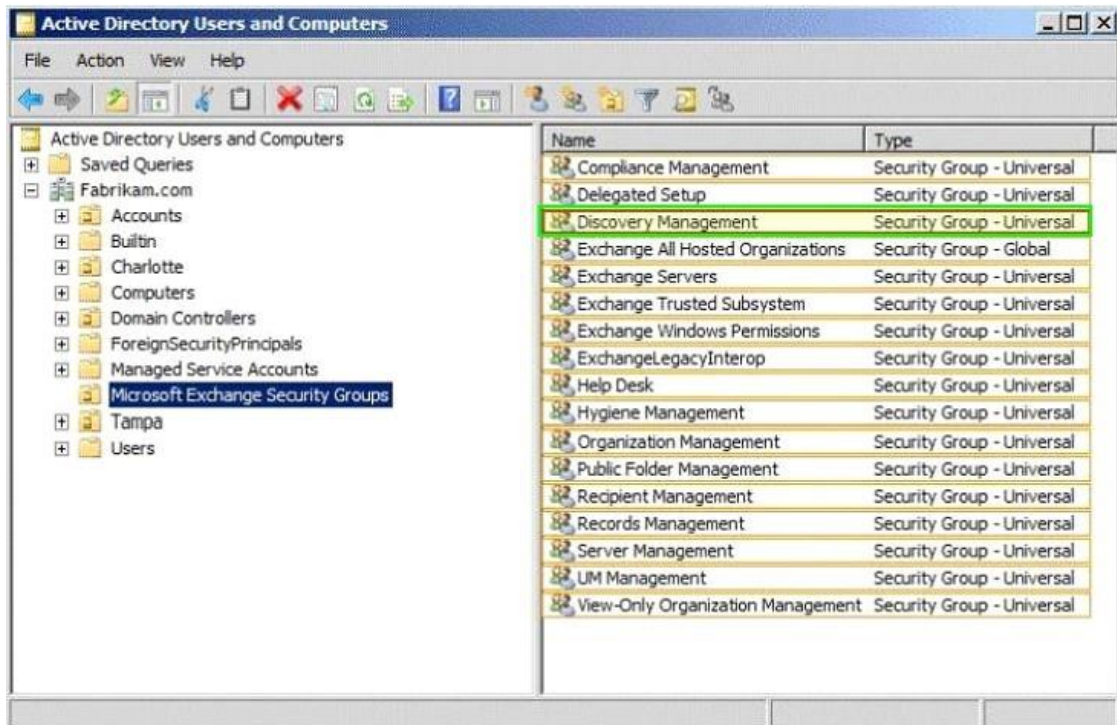
QUESTION 7

HOTSPOT

You need to ensure that the HR1 group can perform the tasks required to meet the technical requirements. To which group should you add HR1? To answer, select the appropriate group in the answer area.



Correct Answer:



QUESTION 8

You are evaluating the implementation of the planned static IP addresses for DAG1. You need to identify the appropriate IP addresses for DAG1. Which two IP addresses should you identify? (Each correct answer presents part of the solution. Choose two.)

- A. 169.254.0.10
- B. 192.168.1.10
- C. 192.168.2.10
- D. 192.168.10.10
- E. 192.168.20.10
- F. 224.0.0.10

Correct Answer: BD

QUESTION 9

DRAG DROP

The security department implements a new firewall between the IP-PBX system and the servers in the Tampa office. You discover that SIP sessions cannot be established between the IP-PBX and EX1. You need to identify which ports must be opened between the IP-PBX and the Exchange Server 2013 servers. Which ports should you identify? To answer, drag the appropriate port or ports to the correct group of servers in the answer area. Each port or ports may be used once, more than once, or not at all. Additionally, you may need to drag the split bar between panes or scroll to view content.

Ports	Answer Area
TCP 5060	Client Access servers Port or ports
UDP 5060	Mailbox servers Port or ports
TCP 5065	Port or ports
TCP 5067	Port or ports
TCP 1024 to 65535	
UDP 1024 to 65535	

Correct Answer:

Ports	Answer Area
TCP 5060	Client Access servers TCP 5060
UDP 5060	Mailbox servers TCP 5065
TCP 5065	TCP 5067
TCP 5067	UDP 1024 to 65535
TCP 1024 to 65535	
UDP 1024 to 65535	

Topic 2, A.Datum

Overview

General Overview

Datum Corporation is a pet supply company that has stores across North America.

A.Datum has an Exchange Server 2007 organization. A.Datum plans to migrate to Exchange Server 2013.

Physical Locations

A.Datum has five locations. The locations are configured as shown in the following table.

Location	Description
New York	Main office that has 2,000 users
Chicago	United States distribution center that has 1,000 users
Toronto	Canada distribution center that has 750 users
United States	300 stores that each has 15 to 25 users
Canada	150 stores that each has 10 to 20 users

Existing Environment

Network Infrastructure

All of the locations connect to each other by using a WAN link. The New York, Toronto, and Chicago locations connect directly to the Internet.

All client computers run Windows 7 and Office 2010. All servers run Windows Server 2008.

Active Directory Environment

The network contains an Active Directory domain named `adatum.local`. `adatum.local` is the corporate domain based in the United States. The network contains a domain named `Canada.adatum.local`. `Canada.adatum.local` is the domain for the stores in Canada.

Each location is configured as an Active Directory site. The forest functional level is Windows Server 2008.

The main office and both of the distribution centers each have two domain controllers for their respective domain. All of the other locations have one domain controller for their respective domain. All of the domain controllers are global catalog servers.

Exchange Infrastructure

The main office and the distribution centers each have three servers that have Exchange Server 2007 installed.

The servers have the following configurations:

- Two of the servers have cluster continuous replication (CCR) deployed
- One of the servers has the Client Access server role and the Hub Transport server role installed

Each store contains a server that has Exchange Server 2007 installed. Each server has mailboxes for active users and mailboxes for inactive users. Each server has approximately 50 mailboxes.

Remote users access Outlook Web Access by using a namespace of mail.adatum.com, which resolves to the Client Access server in the New York office.

Requirements

Planned Changes

The company plans to implement the following changes:

- Migrate all of the mailboxes in the main office and the distribution centers to Exchange Server 2013.
- Integrate a new telephone system to the Exchange Server 2013 organization.
- Deploy a standalone certification authority (CA) that will be used to issue all of the certificates for the messaging infrastructure.

Technical Requirements

The company identifies the following technical requirements:

- Hardware costs must be minimized whenever possible.
- The impact on end users if a site fails must be minimized.
- Voice mail traffic between the telephone system and the Exchange Server environment must be encrypted.
- Each user must be able to access the internal resources and their mailbox by using a single user account.

Compliance Requirements

After a security review, the company identifies the following compliance requirements for the new Exchange Server environment:

- All administrative changes made to the mailboxes must be tracked.
- The legal department must be able to search for messages in all of the mailboxes.
- Users must be prevented from sending email during an upcoming statutory holiday.
- All store managers must be prevented from permanently deleting email messages from their Inbox.
- All email messages must be archived for a minimum of five years to meet regulatory requirements.
- Management occasionally sends the staff internal memos that contain confidential information, such as sales figures. The memos must be protected so that unauthorized users cannot read the memos and internal users cannot forward the memos to external recipients.
- The users in the research department must be able to send email to anyone in the organization, but only the members of a group named Execs must be able to send email to the research users. All other users must be notified that email sent to the research users will remain undelivered.

QUESTION 10

You need to recommend a solution for the memos. The solution must meet the compliance requirements. What should you include in the recommendation?

- A. Secure/Multipurpose Internet Mail Extensions (S/MIME)
- B. Information Rights Management (IRM)
- C. Domain Security
- D. Data loss prevention (DLP) policies

Correct Answer: B

QUESTION 11

You need to recommend a solution to meet the compliance requirement for the legal department. What should you include in the recommendation?

- A. A retention hold
- B. The Discovery Management management role group
- C. A litigation hold
- D. The Recipient Management management role group

Correct Answer: B

QUESTION 12

You are creating a contingency plan to be implemented if the entire New York site fails after Exchange Server 2013 is deployed. You need to recommend which tasks must be performed to ensure that all of the users can access Outlook Web App from the Chicago site if the New York fails. Which three actions should you recommend? (Each correct answer presents part of the solution. Choose three.)

- A. On the Client Access server in the Chicago site, set the ExternalURL of Outlook Web App to mail.adatum.com.
- B. On the Mailbox server in the Chicago site, set the ExternalURL of Outlook Web App to mail.adatum.com.
- C. Modify the host (A) record for mail.adatum.com to point to the Client Access server in the Chicago site.
- D. On the Client Access server in the Chicago site, set the internal URL of Outlook Web App to mail.adatum.local.
- E. Install the mail.adatum.com certificate and private key on the Client Access server in the Chicago site.

Correct Answer: ACE

QUESTION 13

You need to recommend an auditing solution that meets the compliance requirements. What should you recommend?

- A. Export the mailbox audit log.
- B. Run an administrator role group report.
- C. Run a non-owner mailbox access report.
- D. Export the administrator audit log.

Correct Answer: D

QUESTION 14

You deploy a new certificate to a Client Access server. You test the new certificate by using Outlook Anywhere from the Internet. The test generates certificate errors. You need to prevent the errors from reoccurring. To which two stores should you add the root CA certificate? (Each correct answer presents part of the solution. Choose two.)

- A. the personal store on the client computers

- B. the personal store on the Client Access server
- C. the personal store on the Mailbox servers
- D. the Trusted Root Certification Authorities store on the client computers
- E. the Trusted Root Certification Authorities store on the Client Access server
- F. the Trusted Root Certification Authorities store on the Mailbox servers

Correct Answer: DE

QUESTION 15

You need to recommend a solution to ensure that the store managers meet the compliance requirements. What should you include in the recommendation?

- A. Retention tags and retention policies
- B. Deleted item retention
- C. An in-place hold
- D. Personal archives

Correct Answer: C

QUESTION 16

You need to recommend a solution to ensure that during the planned migrations, all Autodiscover requests are processed by the Exchange Server 2013 Client Access servers. What should you recommend?

- A. On the Exchange Server 2007 Client Access servers, modify the AutodiscoverServiceInternalURI.
- B. On the Exchange Server 2007 Client Access servers, modify the ExternalURL value of the Autodiscover virtual directory.
- C. On the Exchange Server 2013 Client Access servers, modify the ExternalURL value of the Autodiscover virtual directory.
- D. On the Exchange Server 2013 Client Access servers, modify the AutodiscoverServiceInternalURI.

Correct Answer: A

QUESTION 17

You need to recommend a solution for the voice mail traffic. The solution must meet the technical requirements. Which two configurations should you include in the recommendation? (Each correct answer presents part of the solution. Choose two.)

- A. A dial plan.
- B. a server certificate
- C. a transport rule
- D. a data loss prevention (DLP) policy
- E. a call answering rule

Correct Answer: AB

QUESTION 18

DRAG DROP

You need to recommend a solution to meet the compliance requirements for the research department and the statutory holidays. What should you recommend configuring? To answer, drag the appropriate object to the correct location in the answer area. Each object may be used once, more than once, or not at all. Additionally, you may need to drag the split bar between panes or scroll to view content.

Objects	Answer Area
a MailTip	Research department compliance requirement
a PolicyTip	Object
a transport rule	Object
a retention tag	Statutory holidays compliance requirement
an email address policy	Object

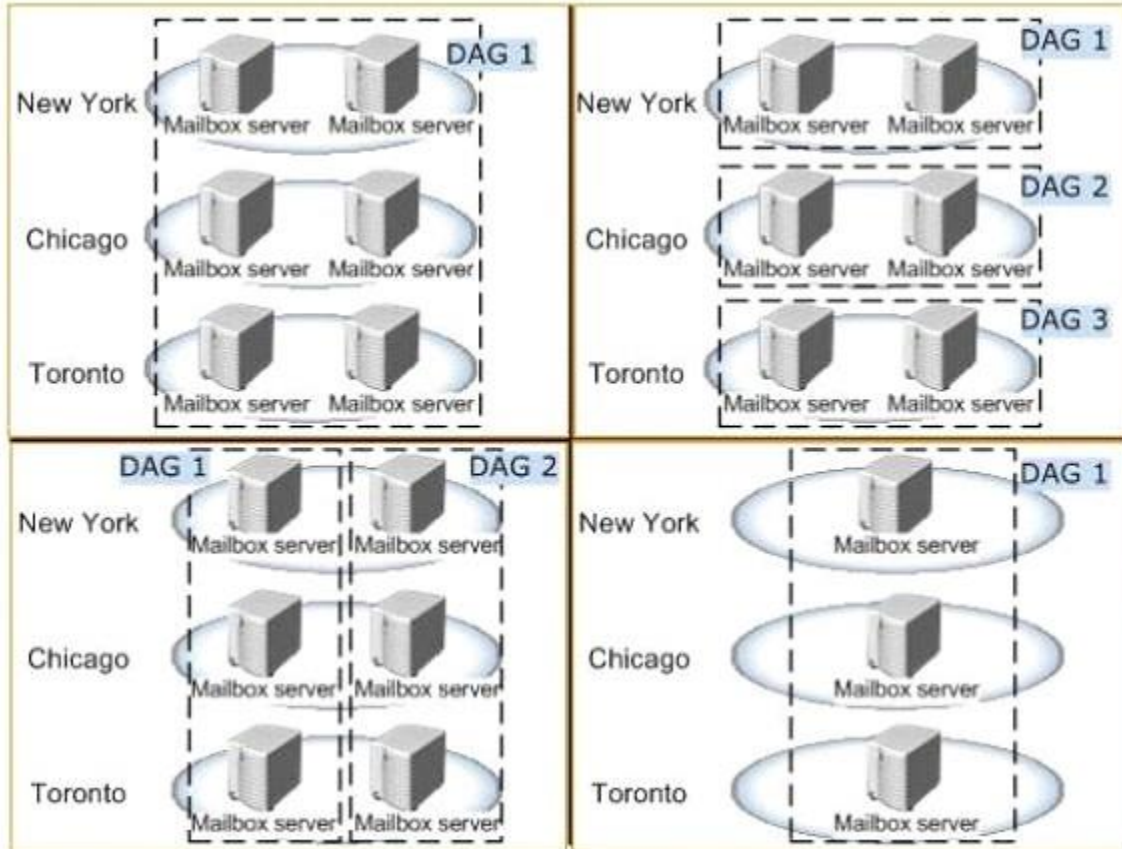
Correct Answer:

Objects	Answer Area
a MailTip	a transport rule
a PolicyTip	a MailTip
a transport rule	Research department compliance requirement
a retention tag	Statutory holidays compliance requirement
an email address policy	a transport rule

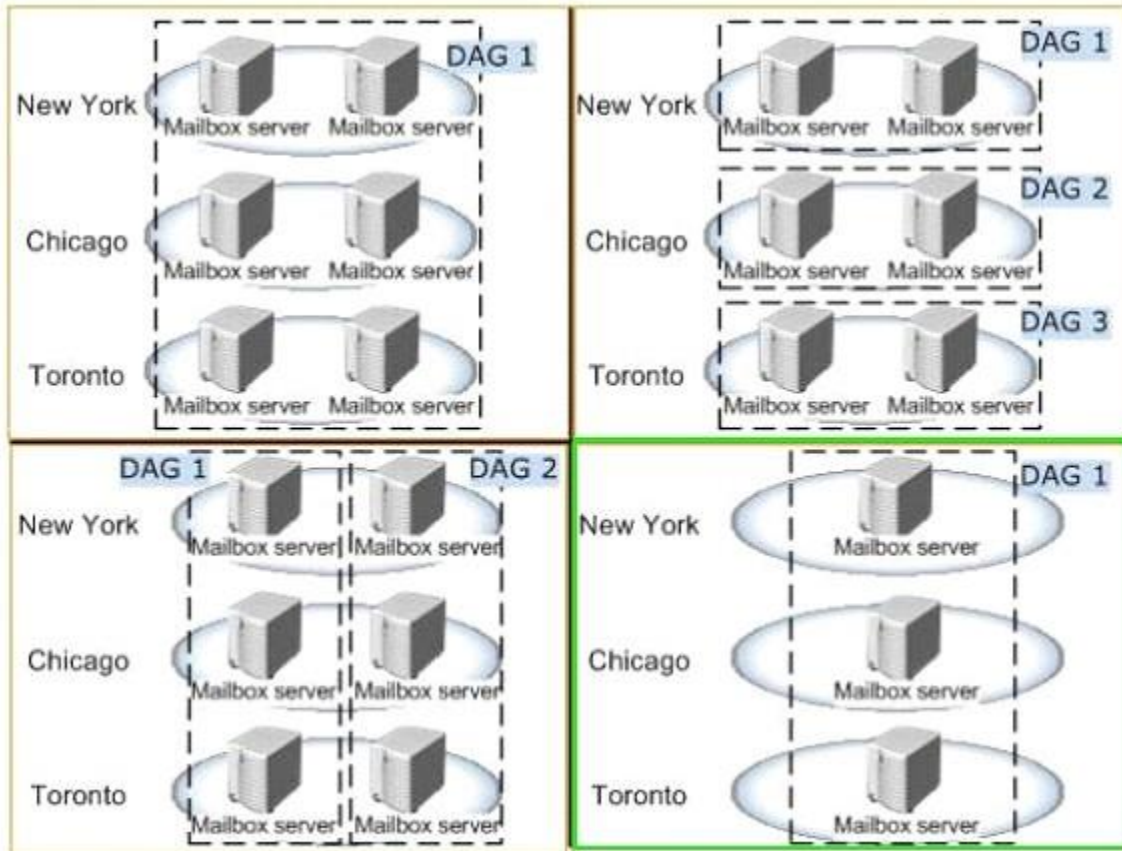
QUESTION 19

HOTSPOT

You need to recommend a database availability group (DAG) design that meets the technical requirements. Which DAG design should you recommend? To answer, select the appropriate design in the answer area.



Correct Answer:



Topic 3, Contoso Ltd

Overview

General Overview

Contoso, Ltd., is an aerospace engineering company that manufactures jet engine parts for various industries and government agencies. Contoso has an Exchange Server 2013 organization.

A partner company named Tailspin Toys has an Exchange Server 2010 organization.

Physical Locations

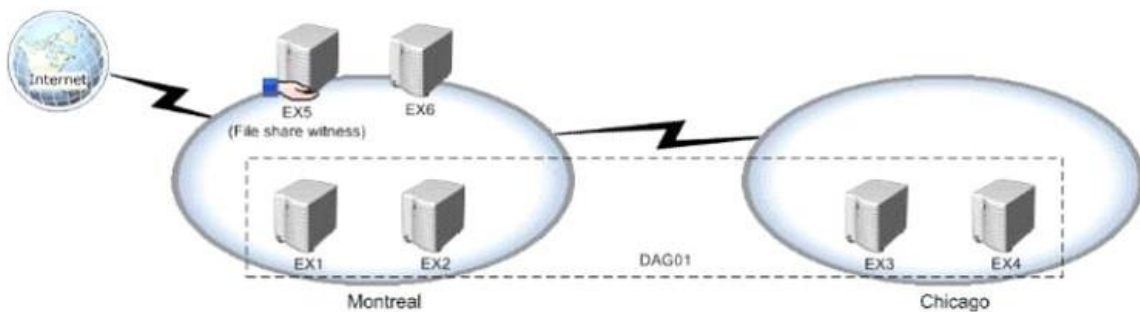
Contoso has two offices. The offices are located in Montreal and Chicago.

Each office contains a data center:

- The Montreal and Chicago offices connect to each other by using a direct WAN link.
- All connections to the Internet are routed through the Montreal office.
- Most of Contoso's employees work from the Montreal office.

Existing Environment

The network of Contoso is configured as shown in the exhibit. (Click the Exhibit button.)



The network of Contoso contains the following components:

- Client computers that run either Microsoft Outlook 2007 or Outlook 2010.
- Users who have a primary SMTP address that uses the contoso.com suffix.
- A retention policy that retains all email messages for 580 days and is associated to all users.
- Six servers that have Exchange Server installed. The servers are configured as shown in the following table.

Server name	Role	Office
EX1	Mailbox server	Montreal
EX2	Mailbox server	Montreal
EX3	Mailbox server Client Access server	Chicago
EX4	Mailbox server Client Access server	Chicago
EX5	Client Access server	Montreal
EX6	Client Access server	Montreal

- A data availability group (DAG) named DAG1 that contains all of the mailbox servers. EX5 is configured as the witness server for DAG1. A file server in the Chicago office is configured as an alternate witness server. DAG1 has Datacenter Activation Coordination (DAC) mode enabled.

Requirements

Planned Changes

Contoso plans to implement the following changes:

- Implement an organization relationship between Contoso and Tailspin Toys.
- Move the mailboxes of all the members of the sales department to Office 365.
- Evaluate Unified Messaging (UM) by conducting a small pilot in the Montreal office.

Security Requirements

Contoso identifies the following security requirements:

- Ensure that the data in the Exchange Server databases cannot be read if a hard disk is stolen.
- Prevent temporary employees from executing a Reply All or a Forward of any email messages they receive.
- Prevent temporary contractors from changing the configurations of the user accounts for the users in the research and development department.
- Ensure that all of the connections to Outlook Web App from the Internet use Extensible Authentication Protocol (EAP) protocols and Transport Layer Security (TLS) protocols.
- Secure all of the email messages from the users at Tailspin Toys to the Contoso users. Ensure that all of the messages can be secured if the certificates at Tailspin Toys are issued by a trusted third-party certification authority (CA).

Auditing Requirements

Contoso identifies the following requirements for auditing mailboxes:

- The manager of the legal department must receive a daily report by email that contains a record of all the eDiscovery mailbox searches.
- Any access to a mailbox by a service account must be excluded from the daily report.

Compliance Requirements

All of the email messages in the Sent Items folder of each user in the marketing department of Contoso must be deleted automatically after 365 days.

Office 365 Coexistence Requirements

Contoso identifies the following Office 365 coexistence requirements:

- Office 365 users must be able to access their mailbox by using their Active Directory user account in Contoso.
- On-premises users must be able to share free/busy information and calendar information with the Office 365 users.

QUESTION 20

You are evaluating the implementation of the organization relationship. You need to recommend which tasks must be performed to ensure that the Contoso users can view the Out of Office message of the Tailspin Toys users before the Contoso users send a message to the Tailspin Toys users. What should you recommend doing before implementing the organization relationship?

- A. Create a Policy Tip.
- B. Upgrade all of the client computers to Outlook 2010.
- C. Create a MailTip.
- D. Publish the Autodiscover service of Tailspin Toys.
- E. Create a remote domain.

Correct Answer: B

EnsurePass.com Members Features:

1. Verified Answers researched by industry experts.
2. Q&As are downloadable in PDF and VCE format.
3. 98% success Guarantee and **Money Back** Guarantee.
4. Free updates for **180** Days.
5. **Instant Access to download the Items**

View list of All Exam provided:

<http://www.ensurepass.com/certifications?index=A>

To purchase Lifetime Full Access Membership click here:

<http://www.ensurepass.com/user/register>

Valid Discount Code for 2015: JREH-G1A8-XHC6

To purchase the HOT Microsoft Exams:

<u>Microsoft</u>			
70-243	70-347	70-466	70-515
70-246	70-410	70-467	70-516
70-247	70-411	70-480	70-519
70-321	70-412	70-483	70-583
70-331	70-413	70-484	70-640
70-332	70-414	70-485	70-649
70-336	70-417	70-486	70-668
70-337	70-461	70-487	70-680
70-341	70-462	70-488	70-687
70-342	70-463	70-489	70-688
70-346	70-464	70-513	70-689

