



Vendor: Microsoft

Exam Code: 70-411

Exam Name: Administering Windows Server 2012

Version: Demo

QUESTION 1

DRAG DROP

Your network contains an Active Directory forest named contoso.com. The forest contains a Network Policy Server (NPS) server named NPS1 and a VPN server named VPN1. VPN1 forwards all authentication requests to NPS1.

A partner company has an Active Directory forest named adatum.com. The adatum.com forest contains an NPS server named NPS2.

You plan to grant users from adatum.com VPN access to your network.

You need to authenticate the users from adatum.com on VPN1.

What should you create on each NPS server?

To answer, drag the appropriate objects to the correct NPS servers. Each object may be used once, more than once, or not at all. You may need to drag the split bar between panes or scroll to view content.

The screenshot shows the NPS configuration interface. On the left, the 'Objects' pane contains four items: 'a connection request policy', 'a network policy', 'a RADIUS client', and 'a remote RADIUS server group'. On the right, the 'Answer Area' is divided into two sections by a horizontal line. The top section is for 'NPS1' and contains two empty boxes labeled 'Object'. The bottom section is for 'NPS2' and contains one empty box labeled 'Object'.

Correct Answer:

The screenshot shows the NPS configuration interface with the correct answer. On the left, the 'Objects' pane contains four items: 'a connection request policy', 'a network policy', 'a RADIUS client', and 'a remote RADIUS server group'. On the right, the 'Answer Area' is divided into two sections by a horizontal line. The top section is for 'NPS1' and contains two boxes: 'a connection request policy' and 'a remote RADIUS server group'. The bottom section is for 'NPS2' and contains one box: 'a RADIUS client'.

QUESTION 2

HOTSPOT

Your network contains an Active Directory domain named contoso.com. The domain contains the users shown in the following table.

User name	Member of
User1	Group1
User2	Group2
User3	Group3

You have a Network Policy Server (NPS) server that has the network policies shown in the following table.

Policy name	Condition	Processing order
Policy1	Date and time restriction: Sunday 00:00 to Saturday 24:00	2
Policy2	CONTOSO\Group1	1
Policy3	CONTOSO\Group2 or CONTOSO \Group3	3

User1, User2, and User3 plan to connect to the network by using a VPN. You need to identify which network policy will apply to each user.

What should you identify?

To answer, select the appropriate policy for each user in the answer area.

Answer Area

User1:

User2:

User3:

Correct Answer:

Answer Area

User1:

User2:

User3:

QUESTION 3

Your network contains an Active Directory domain named contoso.com. The domain contains a server named Server1 that runs Windows Server 2012 R2.

Server1 has the following role services installed:

- DirectAccess and VPN (RRAS)
- Network Policy Server

Remote users have client computers that run either Windows XP, Windows 7, or Windows 8.

You need to ensure that only the client computers that run Windows 7 or Windows 8 can establish VPN connections to Server1.

What should you configure on Server1?

- A. A condition of a Network Policy Server (NPS) network policy
- B. A constraint of a Network Policy Server (NPS) network policy
- C. A condition of a Network Policy Server (NPS) connection request policy
- D. A vendor-specific RADIUS attribute of a Network Policy Server (NPS) connection request policy

Correct Answer: A

Explanation:

If you want to configure the Operating System condition, click Operating System, and then click Add. In Operating System Properties, click Add, and then specify the operating system settings that are required to match the policy. The Operating System condition specifies the operating system (operating system version or service pack number), role (client or server), and architecture (x86, x64, or ia64) required for the computer configuration to match the policy.

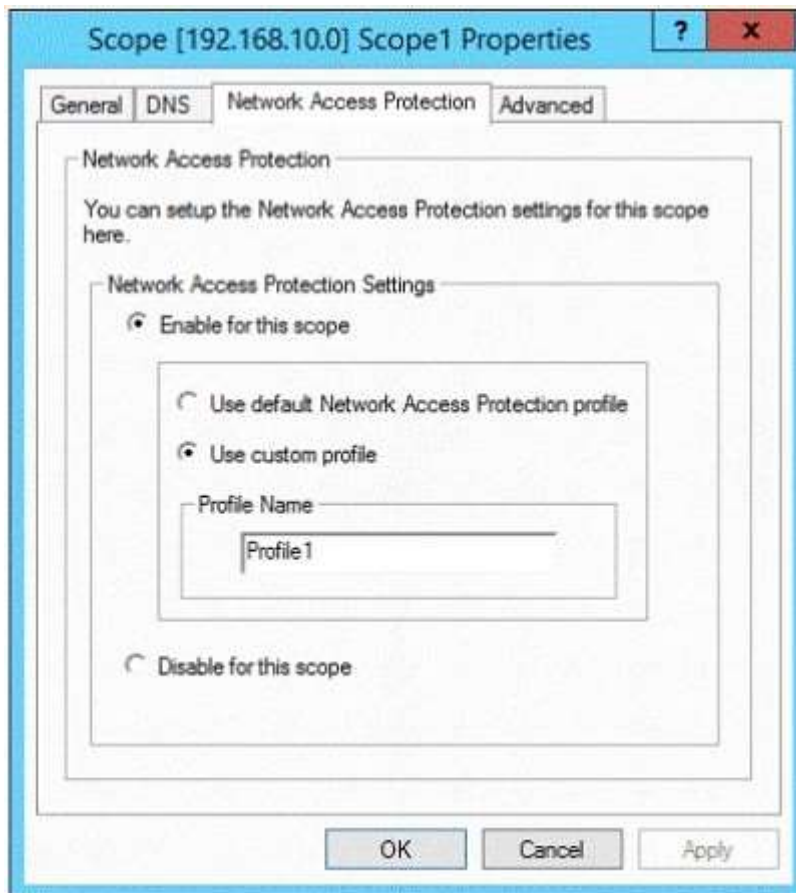
QUESTION 4

HOTSPOT

Your network contains an Active Directory domain named contoso.com. The domain contains two servers named Server1 and Server2. Server1 has the Network Policy Server server role installed. Server2 has the

DHCP Server server role installed. Both servers run Windows Server 2012 R2.
You are configuring Network Access Protection (NAP) to use DHCP enforcement.

You configure a DHCP scope as shown in the exhibit. (Click the Exhibit button.)



You need to ensure that non-compliant NAP clients receive different DHCP options than compliant NAP clients.

What should you configure on each server?

To answer, select the appropriate options for each server in the answer area.

Answer Area

Server1:
Health Policies
Identity-Type
MS-Service Class
Service-Type

Server2:
filters
a policy
scope options
server options
a User class
a Vendor class

Correct Answer:

Answer Area

Server1:
Health Policies
Identity-Type
MS-Service Class
Service-Type

Server2:
filters
a policy
scope options
server options
a User class
a Vendor class

QUESTION 5

You are a network administrator of an Active Directory domain named contoso.com.

You have a server named Server1 that runs Windows Server 2012 R2. Server1 has the DHCP Server server role and the Network Policy Server role service installed.

You enable Network Access Protection (NAP) on all of the DHCP scopes on Server1.

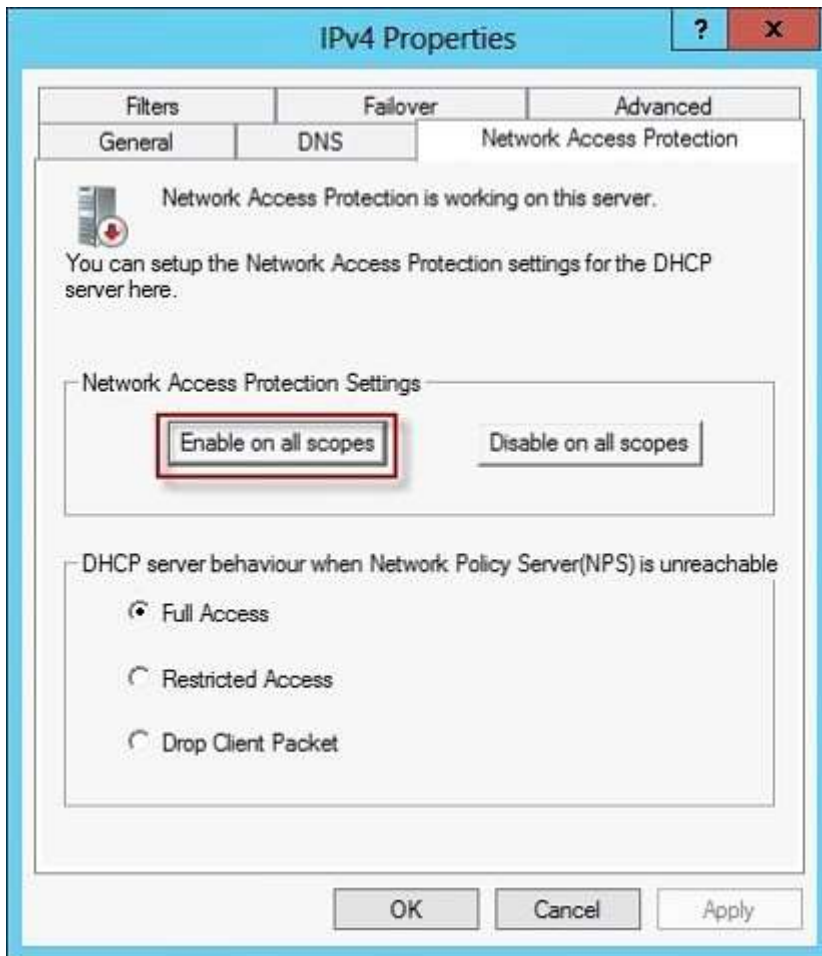
You need to create a DHCP policy that will apply to all of the NAP non-compliant DHCP clients.

Which criteria should you specify when you create the DHCP policy?

- A. The client identifier
- B. The user class
- C. The vendor class
- D. The relay agent information

Correct Answer: B

Explanation:



To configure a NAP-enabled DHCP server

On the DHCP server, click Start, click Run, in Open, type dhcpgmt. smc, and then press ENTER.

In the DHCP console, open <servername>IPv4.

Right-click the name of the DHCP scope that you will use for NAP client computers, and then click Properties.

On the Network Access Protection tab, under Network Access Protection Settings, choose Enable for this scope, verify that Use default Network Access Protection profile is selected, and then click OK.

In the DHCP console tree, under the DHCP scope that you have selected, right- click Scope Options, and then click Configure Options. On the Advanced tab, verify that Default User Class is selected next to User class.

Select the 003 Router check box, and in IP Address, under Data entry, type the IP address for the default gateway used by compliant NAP client computers, and then click Add.

Select the 006 DNS Servers check box, and in IP Address, under Data entry, type the IP address for each router to be used by compliant NAP client computers, and then click Add.

Select the 015 DNS Domain Name check box, and in String value, under Data entry, type your organization's domain name (for example, woodgrovebank. local), and then click Apply. This domain is a full-access network assigned to compliant NAP clients.

On the Advanced tab, next to User class, choose Default Network Access Protection Class.

Select the 003 Router check box, and in IP Address, under Data entry, type the IP address for the default gateway used by noncompliant NAP client computers, and then click Add. This can be the same default gateway that is used by compliant NAP clients.

Select the 006 DNS Servers check box, and in IP Address, under Data entry, type the IP address for each DNS server to be used by noncompliant NAP client computers, and then click Add. These can be the same DNS servers used by compliant NAP clients.

Select the 015 DNS Domain Name check box, and in String value, under Data entry, type a name to identify the restricted domain (for example, restricted. Woodgrovebank. local), and then click OK. This domain is a restricted-access network assigned to noncompliant NAP clients.

Click OK to close the Scope Options dialog box.

Close the DHCP console.

<http://technet.microsoft.com/en-us/library/dd296905%28v=ws.10%29.aspx>

QUESTION 6

HOTSPOT

Your network contains a RADIUS server named Server1.

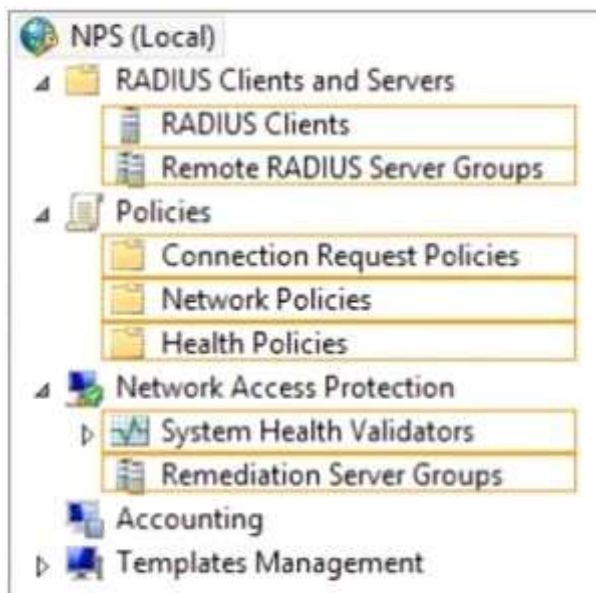
You install a new server named Server2 that runs Windows Server 2012 R2 and has Network Policy Server (NPS) installed.

You need to ensure that all accounting requests for Server2 are forwarded to Server1.

On Server2, you configure a Connection Request Policy.

What else should you configure on Server2?

To answer, select the appropriate node in the answer area.



Correct Answer:



QUESTION 7

Your network contains an Active Directory domain named contoso.com. The domain contains a server named Server1 that runs Windows Server 2012 R2 and has the Network Policy Server role service installed.

An administrator creates a RADIUS client template named Template1.

You create a RADIUS client named Client1 by using Template 1.

You need to modify the shared secret for Client1.

What should you do first?

- A. Configure the Advanced settings of Template1.
- B. Set the Shared secret setting of Template1 to Manual.
- C. Clear Enable this RADIUS client for Client1.
- D. Clear Select an existing template for Client1.

Correct Answer: D

Explanation:

Clear checkmark for Select an existing template in the new client wizard.

In New RADIUS Client, in Shared secret, do one of the following:

Bullet Ensure that Manual is selected, and then in Shared secret, type the strong password that is also entered on the RADIUS client. Retype the shared secret in Confirm shared secret.

New RADIUS Client



Settings **Advanced**

Enable this RADIUS client

Select an existing template:

Template1

Name and Address

Friendly name:

Client1

Address (IP or DNS):

192.168.1.1

Verify...

Shared Secret

Select an existing Shared Secrets template:

None

To manually type a shared secret, click Manual. To automatically generate a shared secret, click Generate. You must configure the RADIUS client with the same shared secret entered here. Shared secrets are case-sensitive.

Manual

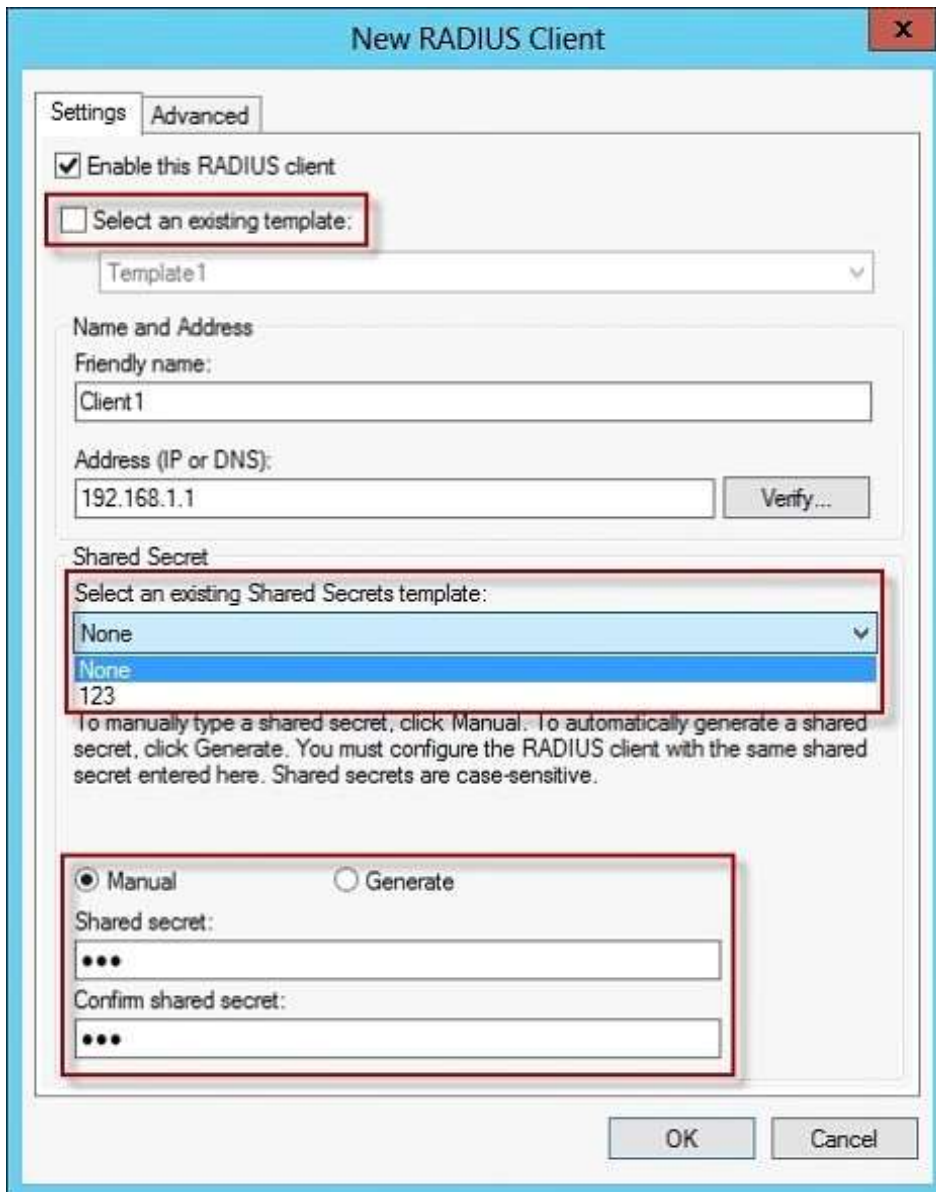
Generate

Shared secret:

Confirm shared secret:

OK

Cancel



QUESTION 8

Your network contains an Active Directory domain named contoso.com. All servers run Windows Server 2012 R2.

The domain contains a server named Server1 that has the Network Policy Server server role and the Remote Access server role installed. The domain contains a server named Server2 that is configured as a RADIUS server.

Server1 provides VPN access to external users.

You need to ensure that all of the VPN connections to Server1 are logged to the RADIUS server on Server2.

What should you run?

- A. Add-RemoteAccessRadius -ServerNameServer1 -AccountingOnOffMsg Enabled - SharedSecret "Secret" -Purpose Accounting
- B. Set-RemoteAccessAccounting -AccountingOnOffMsg Enabled -AccountingOnOffMsg Enabled
- C. Add-RemoteAccessRadius -ServerName Server2 -AccountingOnOffMsg Enabled - SharedSecret "Secret" -Purpose Accounting

D. Set-RemoteAccessAccounting -EnableAccountingType Inbox -AccountingOnOffMsg Enabled

Correct Answer: C

Explanation:

Add-RemoteAccessRadius

Adds a new external RADIUS server for VPN authentication, accounting for DirectAccess (DA) and VPN, or one-time password (OTP) authentication for DA.

AccountingOnOffMsg<String>

Indicates the enabled state for sending of accounting on or off messages. The acceptable values for this parameter are:

Enabled.

Disabled. This is the default value.

This parameter is applicable only when the RADIUS server is being added for Remote Access accounting.

QUESTION 9

Your network contains four Network Policy Server (NPS) servers named Server1, Server2, Servers, and Server4.

Server1 is configured as a RADIUS proxy that forwards connection requests to a remote RADIUS server group named Group1.

You need to ensure that Server2 and Server3 receive connection requests. Server4 must only receive connection requests if both Server2 and Server3 are unavailable.

How should you configure Group1?

- A. Change the Weight of Server4 to 10.
- B. Change the Weight of Server2 and Server3 to 10.
- C. Change the Priority of Server2 and Server3 to 10.
- D. Change the Priority of Server4 to 10.

Correct Answer: D

Explanation:

During the NPS proxy configuration process, you can create remote RADIUS server groups and then add RADIUS servers to each group. To configure load balancing, you must have more than one RADIUS server per remote RADIUS server group. While adding group members, or after creating a RADIUS server as a group member, you can access the Add RADIUS server dialog box to configure the following items on the Load Balancing tab:

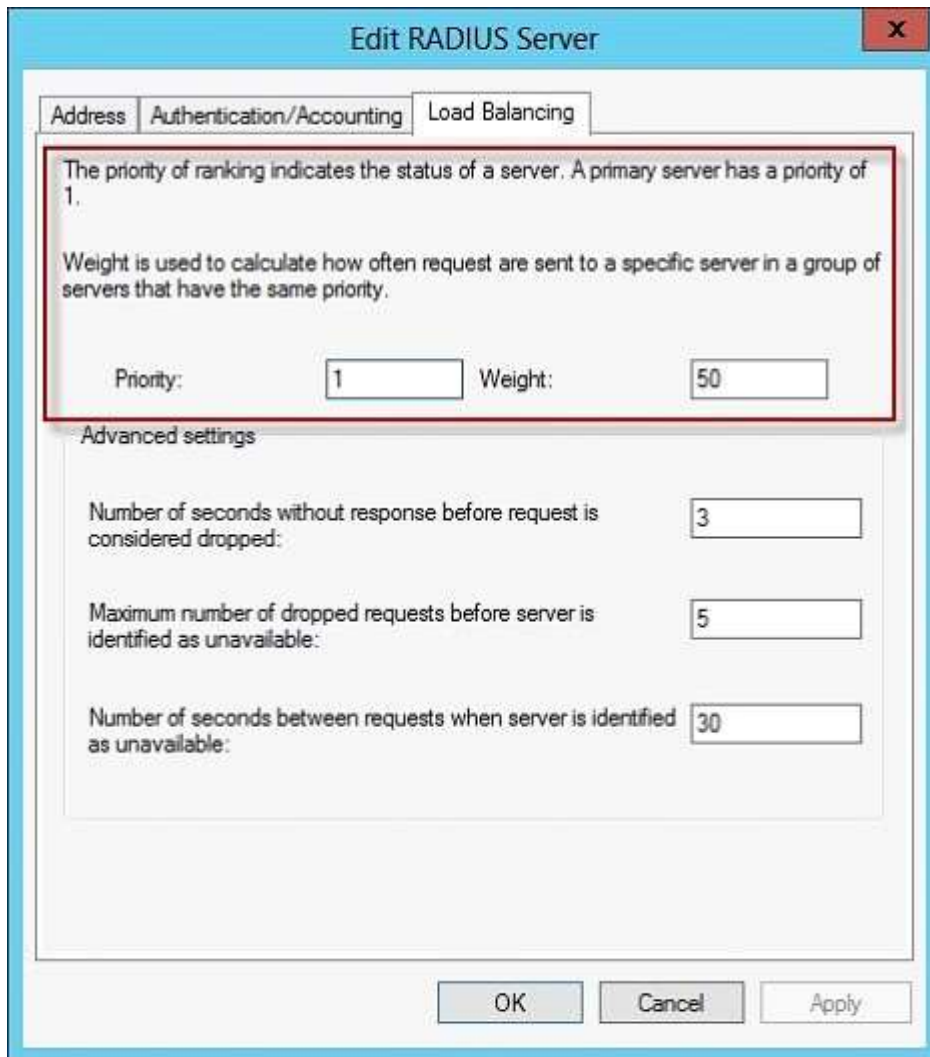
Priority. Priority specifies the order of importance of the RADIUS server to the NPS proxy server. Priority level must be assigned a value that is an integer, such as 1, 2, or 3. The lower the number, the higher priority the NPS proxy gives to the RADIUS server. For example, if the RADIUS server is assigned the highest priority of 1, the NPS proxy sends connection requests to the RADIUS server first; if servers with priority 1 are not available, NPS then sends connection requests to RADIUS servers with priority 2, and so on. You can assign the same priority to multiple RADIUS servers, and then use the Weight setting to load balance between them.

Weight. NPS uses this Weight setting to determine how many connection requests to send to each group member when the group members have the same priority level. Weight setting must be assigned a value between 1 and 100, and the value represents a percentage of 100 percent. For example, if the remote RADIUS server group contains two members that both have a priority level of 1 and a weight rating of 50, the NPS proxy forwards 50 percent of the connection requests to each RADIUS server.

Advanced settings. These failover settings provide a way for NPS to determine whether the remote RADIUS server is unavailable. If NPS determines that a RADIUS server is unavailable, it can start sending connection requests to other group members. With these settings you can configure the number of seconds that the NPS proxy waits for a response from the RADIUS server before it considers the request dropped; the maximum number of dropped requests before the NPS proxy identifies the RADIUS server as unavailable; and the number of seconds that can elapse between requests before the NPS proxy identifies the RADIUS server as

unavailable.

The default priority is 1 and can be changed from 1 to 65535. So changing server 2 and 3 to priority 10 is not the way to go.



[http://technet.microsoft.com/en-us/library/dd197433\(WS.10\).aspx](http://technet.microsoft.com/en-us/library/dd197433(WS.10).aspx)

QUESTION 10

DRAG DROP

Your network contains an Active Directory domain named contoso.com. All domain controllers run Windows Server 2012 R2.

The domain contains an organizational unit (OU) named OU1. OU1 contains an OU named OU2. OU2 contains a user named user1.

User1 is the member of a group named Group1. Group1 is in the Users container.

You create five Group Policy objects (GPO). The GPOs are configured as shown in the following table.

GPO name	Linked to	Enforced setting	Additional permissions
GPO1	Contoso.com	Enabled	Group1 – Deny Apply Group Policy
GPO2	Contoso.com	Disabled	Not applicable
GPO3	OU1	Enabled	Group1 – Deny Read
GPO4	OU1	Disabled	Not applicable
GPO5	OU2	Enabled	Group1 – Full control

The Authenticated Users group is assigned the default permissions to all of the GPOs.

There are no site-level GPOs.

You need to identify which three GPOs will be applied to User1 and in which order the GPOs will be applied to User1.

Which three GPOs should you identify in sequence?

To answer, move the appropriate three GPOs from the list of GPOs to the answer area and arrange them in the correct order.

Correct Answer:

QUESTION 11

Your network contains an Active Directory domain named adatum.com.

A network administrator creates a Group Policy central store.

After the central store is created, you discover that when you create new Group Policy objects (GPOs), the GPOs do not contain any Administrative Templates.

You need to ensure that the Administrative Templates appear in new GPOs.

What should you do?

- A. Add your user account to the Group Policy Creator Owners group.
- B. Configure all domain controllers as global catalog servers.
- C. Copy files from %Windir%\Policydefinitions to the central store.
- D. Modify the Delegation settings of the new GPOs.

Correct Answer: C

Explanation:

To take advantage of the benefits of .admx files, you must create a Central Store in the SYSVOL folder on a domain controller. The Central Store is a file location that is checked by the Group Policy tools. The Group Policy tools use any .admx files that are in the Central Store. The files that are in the Central Store are later replicated to all domain controllers in the domain.

QUESTION 12

Your network contains an Active Directory domain named contoso.com. All domain controllers run Windows Server 2012 R2. The domain contains 500 client computers that run Windows 8 Enterprise.

You implement a Group Policy central store.

You have an application named App1. App1 requires that a custom registry setting be deployed to all of the computers.

You need to deploy the custom registry setting. The solution must minimize administrator effort.

What should you configure in a Group Policy object (GPO)?

- A. The Software Installation settings
- B. The Administrative Templates
- C. An application control policy
- D. The Group Policy preferences

Correct Answer: D

Explanation:

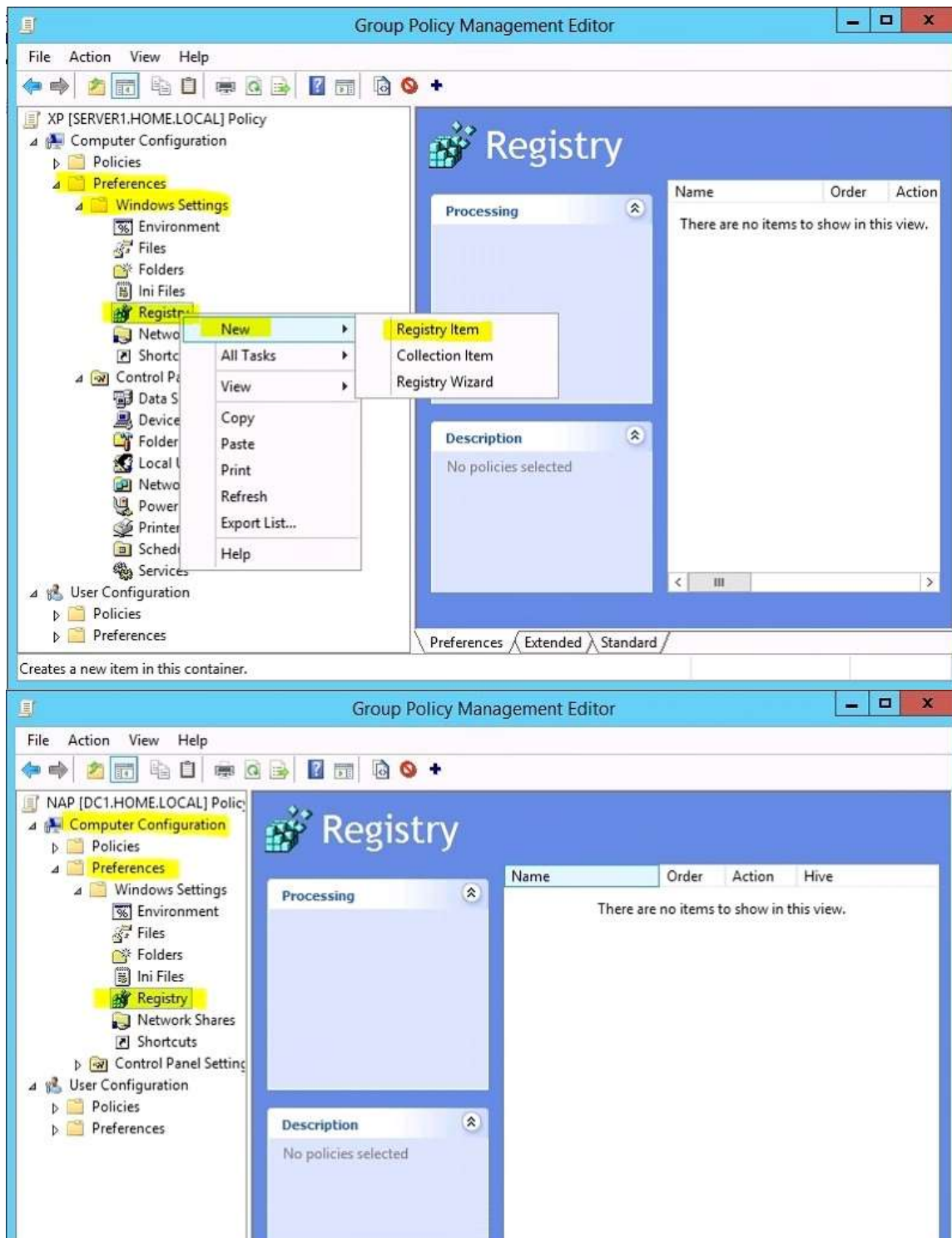
Open the Group Policy Management Console. Right-click the Group Policy object (GPO) that should contain the new preference item, and then click Edit. In the console tree under Computer Configuration or User Configuration, expand the Preferences folder, and then expand the Windows Settings folder. Right-click the Registry node, point to New, and select Registry Item .

Group Policy preferences provide the means to simplify deployment and standardize configurations. They add to Group Policy a centralized system for deploying preferences (that is, settings that users can change later).

You can also use Group Policy preferences to configure applications that are not Group Policy-aware. By using Group Policy preferences, you can change or delete almost any registry setting, file or folder, shortcut, and more. You are not limited by the contents of Administrative Template files. The Group Policy Management Editor (GPME) includes Group Policy preferences.

<http://technet.microsoft.com/en-us/library/gg699429.aspx>

<http://www.unidesk.com/blog/gpos-set-custom-registry-entries-virtual-desktops-disabling-machine-password>



QUESTION 13

Your network contains two Active Directory forests named contoso.com and dev.contoso.com. The contoso.com forest contains a domain controller named DC1. The dev.contoso.com forest contains a domain controller named DC2. Each domain contains an organizational unit (OU) named OU1.

Dev.contoso.com has a Group Policy object (GPO) named GPO1. GPO1 contains 200 settings, including several settings that have network paths. GPO1 is linked to OU1.

You need to copy GPO1 from dev.contoso.com to contoso.com.

What should you do first on DC2?

- A. From the Group Policy Management console, right-click GPO1 and select Copy.
- B. Run the mtedit.exe command and specify the /Domain:contoso.com /DC: DC 1 parameter.
- C. Run the Save-NetGpocmdlet.
- D. Run the Backup-Gpocmdlet.

Correct Answer: A

Explanation:

To copy a Group Policy object:

In the GPMC console tree, right-click the GPO that you want to copy, and then click Copy. To create a copy of the GPO in the same domain as the source GPO, right-click Group Policy objects, click Paste, specify permissions for the new GPO in the Copy GPO box, and then click OK .

For copy operations to another domain, you may need to specify a migration table.

The Migration Table Editor (MTE) is provided with Group Policy Management Console (GPMC) to facilitate the editing of migration tables. Migration tables are used for copying or importing Group Policy objects (GPOs) from one domain to another, in cases where the GPOs include domain-specific information that must be updated during copy or import. Source WS2008R2: Backup the existing GPOs from the GPMC, you need to ensure that the "Group Policy Objects" container is selected for the "Backup Up All" option to be available.

Copy a Group Policy Object with the Group Policy Management Console (GPMC) You can copy a Group Policy object (GPO) either by using the drag-and-drop method or right-click method.

Applies To: Windows 8, Windows Server 2008 R2, Windows Server 2012

[http://technet.microsoft.com/en-us/library/cc785343\(v=WS.10\).aspx](http://technet.microsoft.com/en-us/library/cc785343(v=WS.10).aspx)

<http://technet.microsoft.com/en-us/library/cc733107.aspx>

QUESTION 14

Your network contains an Active Directory domain named contoso.com. All servers run Windows Server 2012 R2.

Client computers run either Windows 7 or Windows 8. All of the client computers have an application named App1 installed.

The domain contains a Group Policy object (GPO) named GPO1 that is applied to all of the client computers.

You need to add a system variable named App1Data to all of the client computers.

Which Group Policy preference should you configure?

- A. Environment
- B. Ini Files
- C. Data Sources
- D. Services

Correct Answer: A

Explanation:

Environment Variable preference items allow you to create, update, replace, and delete user and system environment variables or semicolon-delimited segments of the PATH variable. Before you create an Environment Variable preference item, you should review the behavior of each type of action possible with this extension.

QUESTION 15

Your network contains an Active Directory domain named contoso.com.

All user accounts reside in an organizational unit (OU) named OU1.

You create a Group Policy object (GPO) named GPO1. You link GPO1 to OU1. You configure the Group Policy preference of GPO1 to add a shortcut named Link1 to the desktop of each user.

You discover that when a user deletes Link1, the shortcut is removed permanently from the desktop.

You need to ensure that if a user deletes Link1, the shortcut is added to the desktop again.

What should you do?

- A. Enforce GPO1.
- B. Modify the Link1 shortcut preference of GPO1.
- C. Enable loopback processing in GPO1.
- D. Modify the Security Filtering settings of GPO1.

Correct Answer: B

Explanation:

Replace Delete and recreate a shortcut for computers or users. The net result of the Replace action is to overwrite the existing shortcut. If the shortcut does not exist, then the Replace action creates a new shortcut.

This type of preference item provides a choice of four actions: Create, Replace, Update, and Delete. The behavior of the preference item varies with the action selected and whether the shortcut already exists.

Create	Create a new shortcut for computers or users.
Delete	Remove a shortcut for computers or users.
Replace	Delete and recreate a shortcut for computers or users. The net result of the Replace action is to overwrite the existing shortcut. If the shortcut does not exist, then the Replace action creates a new shortcut.
Update	Modify settings of an existing shortcut for computers or users. This action differs from Replace in that it only updates shortcut settings defined within the preference item. All other settings remain as configured in the shortcut. If the shortcut does not exist, then the Update action creates a new shortcut.

<http://technet.microsoft.com/en-us/library/cc753580.aspx>
<http://technet.microsoft.com/en-us/library/cc753580.aspx>

QUESTION 16

HOTSPOT

Your network contains an Active Directory domain named contoso.com.

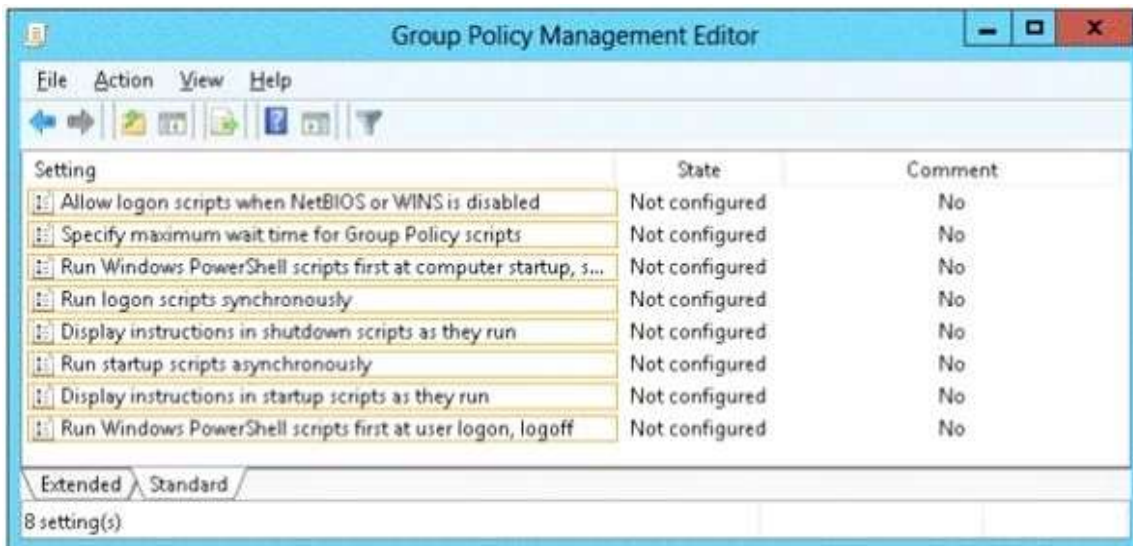
You have several Windows PowerShell scripts that execute when client computers start.

When a client computer starts, you discover that it takes a long time before users are prompted to log on.

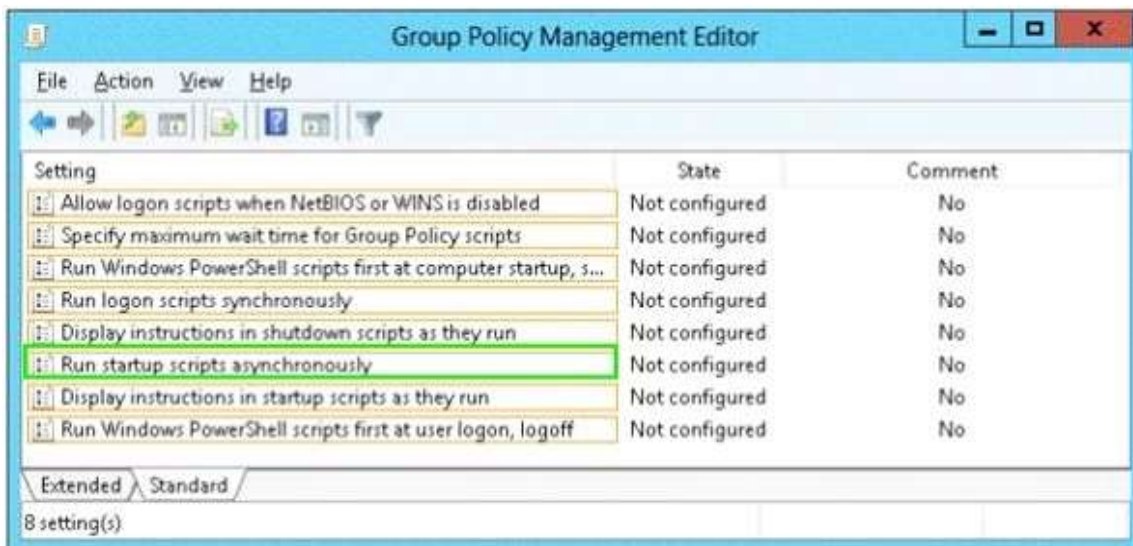
You need to reduce the amount of time it takes for the client computers to start. The solution must not prevent scripts from completing successfully.

Which setting should you configure?

To answer, select the appropriate setting in the answer area.



Correct Answer:



QUESTION 17

HOTSPOT

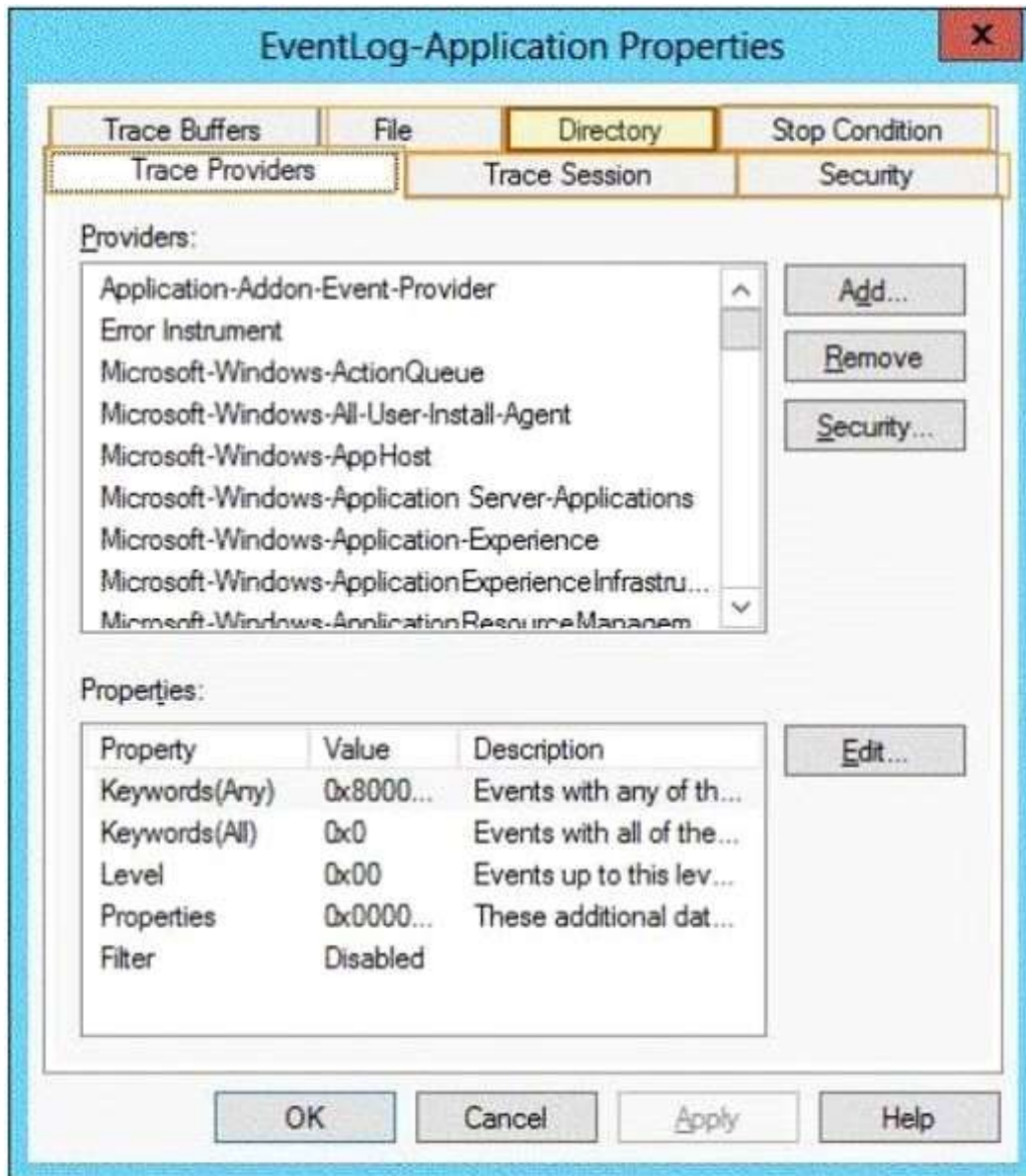
Your network contains an Active Directory domain named contoso.com. The domain contains a member server named Server1. Server1 runs Windows Server 2012 R2.

You enable the EventLog-Application event trace session.

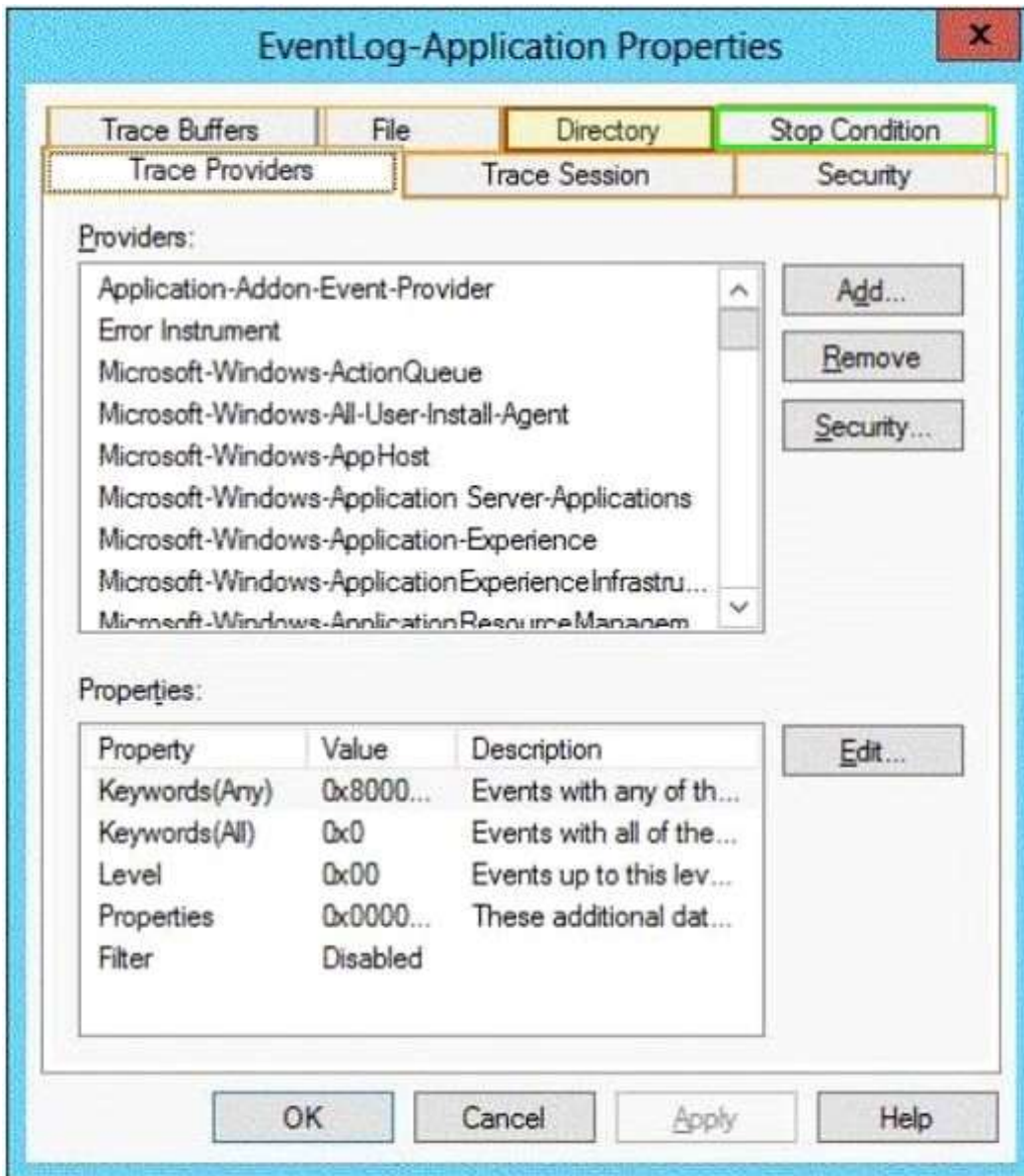
You need to set the maximum size of the log file used by the trace session to 10 MB.

From which tab should you perform the configuration?

To answer, select the appropriate tab in the answer area.



Correct Answer:



QUESTION 18

HOTSPOT

Your network contains an Active Directory domain named contoso.com. The domain contains three member servers named Server1, Server2, and Server3. All servers run Windows Server 2012 R2 and have the

Windows Server Update Services (WSUS) server role installed.

Server1 and Server2 are configured as replica servers that use Server3 as an upstream server.

You remove Servers from the network.

You need to ensure that WSUS on Server2 retrieves updates from Server1. The solution must ensure that Server1 and Server2 have the latest updates from Microsoft.

Which command should you run on each server?

To answer, select the appropriate command to run on each server in the answer area.

Server1

```
set-wsuserversynchronization -syncfrommu  
set-wsuserversynchronization -useservername server1  
set-wsuserversynchronization -useservername server2  
wsusutil.exe movecontent \\server1\c$\  
wsusutil.exe movecontent \\server2\c$\
```

Server2

```
set-wsuserversynchronization -syncfrommu  
set-wsuserversynchronization -useservername server1  
set-wsuserversynchronization -useservername server2  
wsusutil.exe movecontent \\server1\c$\  
wsusutil.exe movecontent \\server2\c$\
```

Correct Answer:

Server1

```
set-wsuserversynchronization -syncfrommu  
set-wsuserversynchronization -useservername server1  
set-wsuserversynchronization -useservername server2  
wsusutil.exe movecontent \\server1\c$\  
wsusutil.exe movecontent \\server2\c$\
```

Server2

```
set-wsuserversynchronization -syncfrommu  
set-wsuserversynchronization -useservername server1  
set-wsuserversynchronization -useservername server2  
wsusutil.exe movecontent \\server1\c$\  
wsusutil.exe movecontent \\server2\c$\
```

QUESTION 19

You manage a server that runs Windows Server 2012 R2. The server has the Windows Deployment Services server role installed.

You have a desktop computer that has the following configuration:

Computer name: Computer1
Operating system: Windows 8
MAC address: 20-CF-30-65-D0-87

GUID: 979708BF-C04B-4525-9FE0-C4150BB6C618

You need to configure a pre-staged device for Computer1 in the Windows Deployment Services console.

Which two values should you assign to the device ID? (Each correct answer presents a complete solution. Choose two.)

- A. 20CF3065D08700000000000000000000
- B. 979708BFC04B45259FE0C4150BB6C618
- C. 979708BF-C04B-452S-9FE0-C4150BB6C618
- D. 000000000000000000000020CF306SD087
- E. 00000000-0000-0000-0000-C41S0BB6C618

Correct Answer: CD

Explanation:

In the text box, type the client computer's MAC address preceded with twenty zeros or the globally unique identifier (GUID) in the format: {XXXXXXXX-XXXX-XXXX-XXX-XXXXXXXXXXXX}.

* To add or remove pre-staged client to/from AD DS, specify the name of the computer or the device ID, which is a GUID, media access control (MAC) address, or Dynamic Host Configuration Protocol (DHCP) identifier associated with the computer.

* Example: Remove a device by using its ID from a specified domain This command removes the pre-staged device that has the specified ID. The cmdlet searches the domain named TSQA.contoso.com for the device.

Windows PowerShell

```
PS C:\> Remove-WdsClient -DeviceID "5a7a1def-2e1f-4a7b-a792-ae5275b6ef92" -Domain -DomainName "TSQA.contoso.com"
```

QUESTION 20

You have Windows Server 2012 R2 installation media that contains a file named Install.wim. You need to identify the permissions of the mounted images in Install.wim. What should you do?

- A. Run dism.exe and specify the /get-mountedwiminfo parameter.
- B. Run imagex.exe and specify the /verify parameter.
- C. Run imagex.exe and specify the /ref parameter.
- D. Run dism.exe and specify the/get-imageinfo parameter.

Correct Answer: A

Explanation:

/Get-MountedWimInfo Lists the images that are currently mounted and information about the mounted image such as read/write permissions, mount location, mounted file path, and mounted image index.

[http://technet.microsoft.com/en-us/library/cc749447\(v=ws.10\).aspx](http://technet.microsoft.com/en-us/library/cc749447(v=ws.10).aspx)

[http://technet.microsoft.com/en-us/library/dd744382\(v=ws.10\).aspx](http://technet.microsoft.com/en-us/library/dd744382(v=ws.10).aspx)

<http://technet.microsoft.com/en-us/library/hh825224.aspx>