



Vendor: Microsoft

Exam Code: 70-415

Exam Name: Implementing a Desktop Infrastructure

Version: Demo

Topic 1, Proseware Inc

Overview

Proseware, Inc. is an independent software vendor. The company has a main office and two branch offices. The main office is located in New York. The branch offices are located in London and Moscow.

Existing Environment

The New York office and the London office each contain the following servers that run Windows Server 2008 R2:

- One Windows Deployment Services (WDS) server
- One Remote Desktop Session Host (RD Session Host) server

Each office contains client computers that run Windows XP.

The London office and the New York office connect to each other by using a high-speed WAN link. The Moscow office and the New York office connect to each other by using a low-speed# high-latency WAN link.

The network connection between the Moscow office and the New York office frequently fails.

Requirements

Planned Changes

The company plans to implement the following changes:

- Migrate all of the client computers to Windows 8.
- Deploy new applications named App1, App2, and App3.
- Deploy a Virtual Desktop Infrastructure (VDI) in the New York office.
- Deploy a Windows Server Update Services (WSUS) infrastructure.

Migration Requirements

The company identifies the following migration requirements:

- Migrate the client computers to Windows 8 by using the Microsoft Deployment Toolkit (MDT).
- Replace the client computers in the New York office. Migrate the user settings during the migration to the new hardware.
- Ensure that the client computers in the London office that are not PXE-capable can download images from WDS.
- Reformat the existing disks in the London office during the migration to Windows8.
- Avoid using the WAN link between the Moscow and New York offices whenever possible.
- Avoid deploying any servers to the Moscow office.

Virtual Desktop Infrastructure (VDI) Requirements The company identifies the following VDI requirements:

- Automatically provision new virtual desktops based on a virtual desktop template. The new virtual desktops will run Windows 8.
- Automatically discard any user changes to the new virtual desktops when the users log off.
- Deploy a 3D graphics application named App1 to all of the new virtual desktops. App1 will require DirectX 11 support.
- Ensure that updates for App1 are applied to all of the new virtual desktops.

Application Requirements

The company identifies the following application requirements:

- In the New York office, deploy an application named App2 to the client computers that run Windows 8.
- Minimize the amount of resources used by App2 on the client computers.
- In the London office, publish an application named App3 to the Work Resources (RADC) area of the Windows 8 Apps screen.

Security Requirements

The company identifies the following security requirements:

- Ensure that updates for the New York, London, and Moscow offices can be approved only by the administrators in the New York office.
- Ensure that the users in the New York office can use only classes of USB devices that are approved by the IT department.
- Configure the replication of updates between the update servers in the New York and London offices.

QUESTION 1

You need to recommend a virtual desktop solution that meets the VDI requirements. What should you recommend?

- A. Managed personal virtual desktop collections
- B. Unmanaged personal virtual desktop collections
- C. Managed pooled virtual desktop collections
- D. Unmanaged pooled virtual desktop collections

Correct Answer: C

Explanation:

Virtual Desktop Collection

There are two types of virtual desktop collections available: personal and pooled. You have the option to let Remote Desktop Services automatically manage pooled virtual desktops in a collection, or you can manually manage them. We will concentrate on automatically managed pooled virtual desktop collections.

A managed pooled virtual desktop collection offers the following capabilities:

Automatically create pooled virtual desktops based on a virtual desktop template.

Automatically install security updates and applications based on a virtual desktop template.

Live migration with local caching.

User profile disk support. A user profile disk stores user profile information in a separate virtual hard disk so that user profile settings are persistent across pooled virtual desktops. With either managed or unmanaged, the administrator can configure the pool to store the user profiles on User Profile disks separate from the machines.

<http://blogs.technet.com/b/canitpro/archive/2013/04/25/step-by-step-deploying-virtual-desktops-with-windowsserver-2012.aspx>

Virtual Machine-based desktop Deployment is of two types:

Personal Virtual Desktop Collection - Administrators manually assign virtual desktops to the users.

Pooled Virtual Desktop Collection - Administrators deploy virtual desktops and users are randomly assigned virtual desktops. At log off virtual desktops are generally rolled back (rollback is optional).

Creating a Pooled Virtual Desktop Collection

There are two types of Pooled Virtual desktop Collections:

Pooled Managed The Virtual desktop machine is created using the Sysprep Template of a virtual machine.

Pooled Unmanaged We can add the existing virtual machine to this virtual desktop collection from Hyper V pool.

With either option, the administrator can configure the pool to store the user profiles on User Profile disks separate from the machines.

<http://blogs.technet.com/b/askperf/archive/2012/10/31/windows-8-windows-server-2012-pooled-virtualdesktop-infrastructure.aspx>

Note

If a user disconnects from a virtual machine in a virtual desktop pool, when the user reconnects to the virtual desktop pool, the user will be connected to the same virtual machine. A virtual machine in a virtual desktop pool can be configured to be automatically restored to its original state after the user logs off. Any changes that a user made while logged on are undone. For more information, see <http://go.microsoft.com/fwlink/?LinkId=143453>.

<http://technet.microsoft.com/en-us/library/ee216741.aspx>

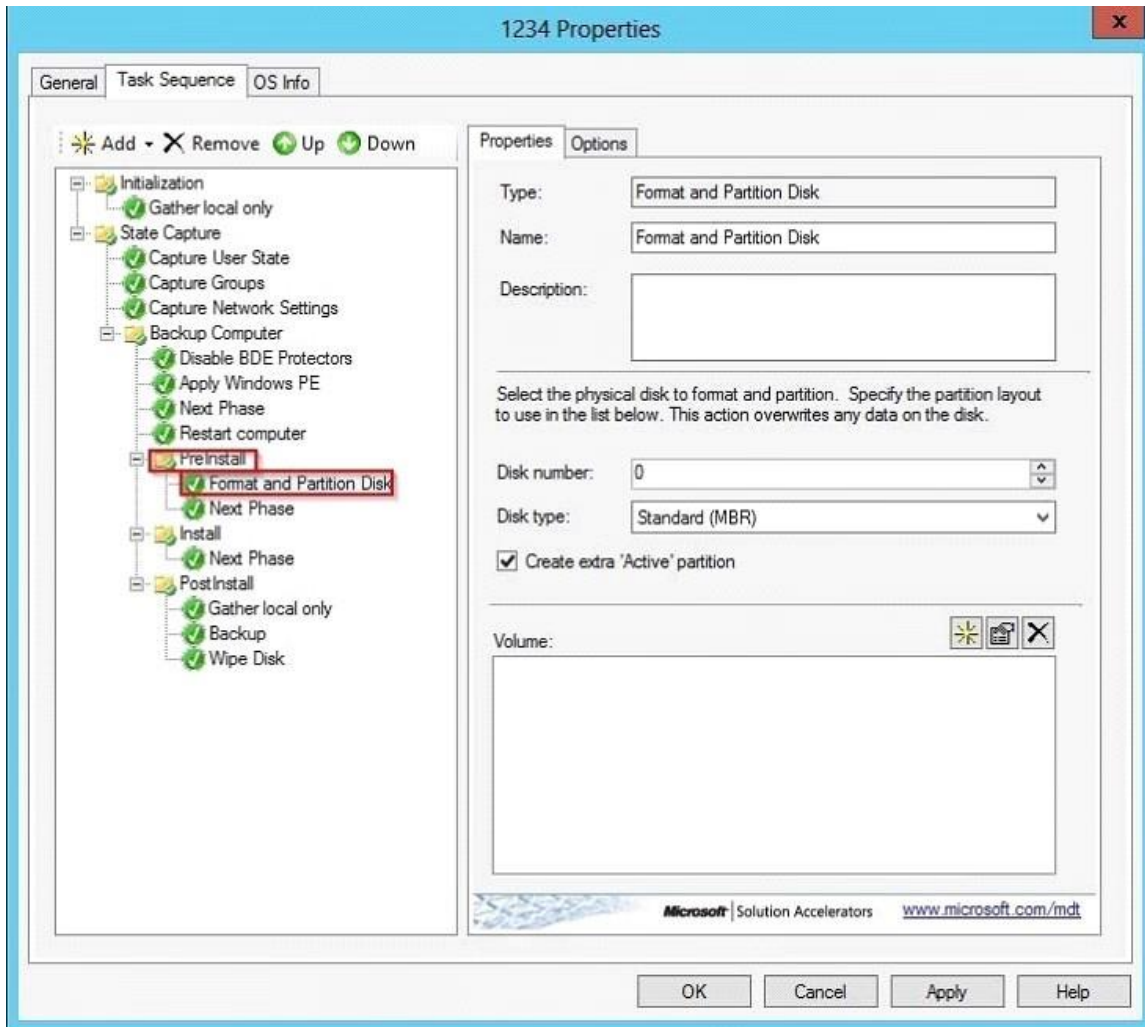
QUESTION 2

You need to configure a Deployment Workbench task sequence that meets the migration requirements of the London office. Which task group should you edit?

- A. Preinstall
- B. State Restore
- C. Postinstall
- D. Capture the reference machine

Correct Answer: A

Explanation:



QUESTION 3

A hardware supplier provides you with four server builds. The server builds are configured as shown in the following table.

Build name	Processor type	Processor feature
Build1	Intel Core i7	Intel Turbo Boost Technology
Build2	Intel Xeon	Intel Flex Memory Access
Build3	Intel Xeon	Second Level Address Translation (SLAT)
Build4	Intel Core i7	Intel Flex Memory Access

You need to recommend which server build must be used to meet the VDI requirements.

What should you include in the recommendation?

- A. Build1
- B. Build2
- C. Build3

D. Build4

Correct Answer: C

QUESTION 4

You need to recommend a solution for updating App1. The solution must meet the VDI requirements. What should you recommend?

- A. Create a new virtual machine from the template file, apply the patch, and create a snapshot of the virtual machine.
- B. Create a new virtual machine from the template file, apply the patch, and run sysprep.exe.
- C. Mount the virtual machine template on a physical host and configure the template to be bootable. Apply the patch and run sysprep.exe.
- D. Mount the virtual machine template on a physical host and configure the template to be bootable. Apply the patch and run dism.exe.

Correct Answer: B

Explanation:

Ensure that updates for App1 are applied to all of the new virtual desktops.

Rolling Out Updates to a Pooled Virtual Desktop Collection

A Master or Gold VM is formally referred to as "virtual desktop template" in the WS2012 Server Manager UI console and the cmdlets in Remote Desktop Services module for Windows PowerShell. It is an input to the managed virtual desktop collection creation process that allows an admin to manage a virtual desktop collection. The Master VM is created and managed by the admin and it specifies the hardware properties and software contents of all the automatically created VMs in that managed virtual desktop collection. For example, if the master VM is assigned 2GB of RAM, then each of the automatically created VMs in the managed virtual desktop collection will be assigned 2GB RAM. In this section, I will describe the various supported options and requirements for the Master VM.

Virtual Hard Disk

The Master VM can only have one virtual hard disk (VHD) attached to it; more than one VHD attached to the Master VM is not supported.

The VHD attached to the Master VM must have either a Windows 7 SP1 or Windows 8 image in sysprep generalized state.

A diff disk chain attached to the Master VM as its VHD is supported. Although the VHD can have more than one logical partition defined in it, it can have only one Windows OS image installed in it.

<http://blogs.msdn.com/b/rds/archive/2012/10/29/single-image-management-for-virtual-desktop-collections-inwindows-server-2012.aspx>

QUESTION 5

You are planning the deployment of Remote Desktop Services (RDS) to support App3. The RDS servers will run Windows Server 2012. You need to recommend which RDS role services are required to ensure that App3 meets the application requirements. Which RDS role services should you recommend? (Each correct answer presents part of the solution. Choose all that apply.)

- A. Remote Desktop Connection Broker
- B. Remote Desktop Gateway
- C. Remote Desktop Virtualization Host
- D. Remote Desktop Web Access

E. Remote Desktop Session Host

Correct Answer: BCD

Explanation:

App3 is a published program.

Select deployment scenario

DESTINATION SERVER
Standard deployment selected

- Before You Begin
- Installation Type
- Deployment Type
- Deployment Scenario
- Role Services
- RD Connection Broker
- RD Web Access
- RD Session Host
- Confirmation
- Completion

Remote Desktop Services can be configured to allow users to connect to virtual desktops, RemoteApp programs, and session-based desktops.

- Virtual machine-based desktop deployment
Virtual machine-based desktop deployment allows users to connect to virtual desktop collections that include published RemoteApp programs and virtual desktops.
- Session-based desktop deployment
Session-based desktop deployment allows users to connect to session collections that include published RemoteApp programs and session-based desktops.




< Previous Next > Deploy Cancel


Review role services

DESTINATION SERVER
Standard deployment selected

- Before You Begin
- Installation Type
- Deployment Type
- Deployment Scenario
- Role Services
- RD Connection Broker
- RD Web Access
- RD Session Host
- Confirmation
- Completion

The following Remote Desktop Services role services will be installed and configured for this deployment.

-  **Remote Desktop Connection Broker**
Remote Desktop Connection Broker connects or reconnects a client device to RemoteApp programs, session-based desktops, and virtual desktops.
-  **Remote Desktop Web Access**
Remote Desktop Web Access enables users to connect to resources provided by session collections and virtual desktop collections by using the Start menu or a web browser.
-  **Remote Desktop Session Host**
Remote Desktop Session Host enables a server to host RemoteApp programs or session-based desktops.

 The credentials of the ██████████ account will be used to create the deployment.

< Previous Next > Deploy Cancel

QUESTION 6

You need to prepare a virtual machine template that meets the VDI requirements. What should you do?

- A. Run `dism.exe` and specify the `/image` parameter.
- B. Run `dism.exe` and specify the `/export-image` parameter.
- C. Run `sysprep.exe` and specify the `/audit` parameter.
- D. Run `sysprep.exe` and specify the `/generalize` parameter.

Correct Answer: D

Explanation:

1. Virtual Hard Disk
 - a. The Master VM can only have one virtual hard disk (VHD) attached to it; more than one VHD attached to the Master VM is not supported.
 - b. The VHD attached to the Master VM must have either a Windows 7 SP1 or Windows 8 image in **sysprep** generalized state.
 - c. A diff disk chain attached to the Master VM as its VHD is supported.
 - d. Although the VHD can have more than one logical partition defined in it, it can have only one Windows OS image installed in it.

QUESTION 7

You need to deploy Windows 8 to the client computers in the Moscow office. The solution must meet the migration requirements. What should you do first?

- A. From the Windows Deployment Services console, add a boot image.
- B. From the Windows Deployment Services console, add an install image.
- C. From the Deployment Workbench, select New Media.
- D. From the Deployment Workbench, select New Linked Deployment Share

Correct Answer: C

Explanation:

The assumption is we only want to use the WAN link when absolutely required. If we create a Linked Deployment Share, all selected data would be replicated to Moscow from New York. By managing the Task Sequence/Share locally in Moscow with no link to New York, you're only downloading the media and software one time. Solution: Use MDT to create a bootable image for a DVD or external drive.

Step 1: Create selection profiles.

Step 2: Create your media.

Step 3: Update your media.

Step 4: Prepare your media.

Step 5: Use your media on the client machine.

Optional: Customize or automate your media.

QUESTION 8

You need to recommend an application deployment method for App2 that meets the application requirements. Which method should you recommend?

- A. Group Policy software installation
- B. A RemoteApp program
- C. A Microsoft Application Virtualization (App-V) package

D. A Client Hyper-V virtual machine

Correct Answer: B

Explanation:

App-V maintains local resources on the client whereas RemoteApp utilizes resources on the backend RDS Server.

The network data sent to the client is also different, App-V has two feature packs that contain all binaries of the streamed app. Remote Apps utilizes RDP, so only the picture information, mouse, keyboard etc are transmitted. Actually they can be combined, applications can be streamed to a RDS server and published to the client via RemoteApp. For more information, please see <http://blogs.msdn.com/b/rds/archive/2009/10/14/whitepaperrelease-application-virtualization-4-5-for-terminal-services.aspx>

For more information about App-V, I suggest that you post to the App-V forum:

<http://social.technet.microsoft.com/Forums/en-US/category/appvirtualization>

QUESTION 9

You need to configure a Group Policy object (GPO) that meets the security requirements of the users in the New York office. Which Group Policy settings should you configure?

- A. Allow installation of devices that match any of these device setup classes Prevent installation of devices not described by other policy settings
- B. All Removable Storage classes: Deny all access Prevent installation of devices not described by other policy settings
- C. Allow installation of devices that match any of these device setup classes Prevent installation of devices using drivers that match these device setup classes
- D. All Removable Storage classes: Deny all access Prevent installation of devices using drivers that match these device setup classes

Correct Answer: A

Explanation:

You'd first allow installation of specific classes and then prevent all others. Prevent installation of devices not described by other policy settings. This policy setting controls the installation of devices that are not specifically described by any other policy setting. If you enable this policy setting, users cannot install or update the driver for devices unless they are described by either the Allow installation of devices that match these device IDs policy setting or the Allow installation of devices for these device classes policy setting. If you disable or do not configure this policy setting, users can install and update the driver for any device that is not described by the Prevent installation of devices that match these device IDs policy setting, the Prevent installation of devices for these device classes policy setting, or the Prevent installation of removable devices policy setting.

<http://msdn.microsoft.com/en-us/library/bb530324.aspx>

QUESTION 10

You need to recommend a task sequence to migrate the client computers in the New York office to Windows B. The solution must meet the migration requirements. Which command should you include in the recommendation?

- A. Migpol
- B. Winrm
- C. Wbadmim
- D. Scanstate

Correct Answer: D

Explanation:

Replace the client computers in the New York office. Migrate the user settings during the migration to the new hardware

Topic 2, Contoso, Ltd

Overview

Contoso, Ltd., is a pharmaceutical company. The company has an office in Seattle.

Existing Environment

The network contains a single-domain Active Directory forest named contoso.com.

The relevant servers in the network are configured as shown in the following table.

Server name	IP address	Role
SRV-DHCP	10.0.0.10/24	DHCP server
SRV-WSUS	10.0.0.20/24	Windows Server Update Services (WSUS) server

All client computers run Windows XP. All client computers are configured to receive automatic updates from SRV-WSUS.

All users have desktop computers. Users in the sales department also have laptop computers. The laptop computers are used by the sales users to remotely access the internal network by using a VPN connection.

The sales users use several line-of-business applications.

Requirements

Planned Changes

The company plans to deploy a Microsoft System Center 2012 Configuration Manager infrastructure that will contain two servers. The servers will be configured as shown in the following table.

Server name	IP address	Role
SRV-PRI	10.0.0.40/24	Primary site server
SRV-DP	10.0.0.50/24	Distribution point

The company plans to deploy a Remote Desktop Services (RDS) infrastructure that will contain the following servers:

- Two Remote Desktop Connection Broker (RD Connection Broker) servers configured for high-availability
- Two Remote Desktop Visualization Host (RD Virtualization Host) servers
- Two Remote Desktop Web Access (RD Web Access) servers
- Two Remote Desktop Gateway (RD Gateway) servers

Technical Requirements

The company identifies the following technical requirements:

- Configuration Manager must be used to deploy operating systems and patches.
- An existing virtual machine that runs Windows 8 must be used as the reference computer for the deployment of new client computers.
- To troubleshoot installation issues, technicians must be able to open a Command Prompt window during the deployment of Windows 8 to the new client computers.

Sales Department Requirements

The company identifies the following requirements for the sales users:

- All of the files on the laptop computers must be encrypted.
- The amount of administrative effort must be minimized whenever possible.
- Certificate warnings must not be displayed when connecting to virtual desktops.
- The availability of the virtual desktops must not be affected by a single server failure.
- The desktop computers of the sales users must be replaced by virtual desktops that run Windows 8.
- The contents of each sales user's Documents folder must be the same on the virtual desktop and the laptop computer.
- The sales users must be able to connect to their virtual desktop from their laptop computer without using a VPN connection.
- The sales users must be able to configure their user settings independently on their virtual desktop and their laptop computer.
- The line-of-business applications must be installed on the virtual desktops only. The line-of-business applications require hardware acceleration to run.

EnsurePass.com Members Features:

1. Verified Answers researched by industry experts.
2. Q&As are downloadable in PDF and VCE format.
3. 98% success Guarantee and **Money Back** Guarantee.
4. Free updates for **180** Days.
5. **Instant Access to download the Items**

View list of All Exam provided:

<http://www.ensurepass.com/certifications?index=A>

To purchase Lifetime Full Access Membership click here:

<http://www.ensurepass.com/user/register>

Valid Discount Code for 2015: JREH-G1A8-XHC6

To purchase the HOT Microsoft Exams:

<u>Microsoft</u>			
70-243	70-347	70-466	70-515
70-246	70-410	70-467	70-516
70-247	70-411	70-480	70-519
70-321	70-412	70-483	70-583
70-331	70-413	70-484	70-640
70-332	70-414	70-485	70-649
70-336	70-417	70-486	70-668
70-337	70-461	70-487	70-680
70-341	70-462	70-488	70-687
70-342	70-463	70-489	70-688
70-346	70-464	70-513	70-689

