



Vendor: Microsoft

Exam Code: 70-688

**Exam Name: Microsoft Managing and Maintaining Windows
8**

Version: Demo

QUESTION 1

DRAG DROP

Your company recently purchased 25 new laptops. All 25 laptops have the same hardware configuration and do not have any operating system installed. You have been asked to deploy Windows 8 on these laptops. You have installed and configured Windows 8 on a reference laptop. You need to create an image and deploy it to the 25 new laptops. Which four actions should you perform in sequence? (To answer, move the appropriate actions from the list of actions to the answer area and arrange them in the correct order.)

	Answer Area
Start the destination laptop from the Windows PE media. Use the Diskpart tool to create the desired partition structure.	
Start the destination laptop from the Windows PE media, and then use the Fdisk tool to create the desired partition structure.	
Remove computer-specific information from the reference laptop.	
Start the reference laptop from the Windows PE media. Use the DISM tool to capture the image, and then upload the image file to a network share.	
Use Windows Easy Transfer (WET) to transfer the image from network share, and then use the DISM tool to apply the image to your windows partition.	
Connect to the network share, and then use the DISM tool to apply the image to your windows partition.	

Correct Answer:

Answer Area	
Start the destination laptop from the Windows PE media. Use the Diskpart tool to create the desired partition structure.	Remove computer-specific information from the reference laptop.
Start the destination laptop from the Windows PE media, and then use the Fdisk tool to create the desired partition structure.	Start the reference laptop from the Windows PE media. Use the DISM tool to capture the image, and then upload the image file to a network share.
Remove computer-specific information from the reference laptop.	Start the destination laptop from the Windows PE media, and then use the Fdisk tool to create the desired partition structure.
Start the reference laptop from the Windows PE media. Use the DISM tool to capture the image, and then upload the image file to a network share.	Connect to the network share, and then use the DISM tool to apply the image to your windows partition.
Use Windows Easy Transfer (WET) to transfer the image from network share, and then use the DISM tool to apply the image to your windows partition.	
Connect to the network share, and then use the DISM tool to apply the image to your windows partition.	

QUESTION 2

DRAG DROP

You administer computers that run windows 7 and Windows 8. You run an application that saves files that contain local settings unique to each user. You want to allow users to synchronize settings for an application to any enterprise computer when they log on to the enterprise computer. You need to implement a solution that will move a user's settings files to any computer. You also need to ensure that you can roll back the changes if necessary. Which required task or tasks should you perform with each approach? (To answer, drag the appropriate required task to the corresponding approach. Each required task may be used once, more than once, or not at all. You may need to drag the split bar between panes or scroll to view content.)

Required Task	Approach
Create a settings location template.	Generator
Place the settings location template.	Template Catalog Path
Enable Folder Redirection.	Microsoft Desktop Optimization Pack (MDOP)
Deploy the User Experience Virtualization (UE-V) Agent.	

Correct Answer:

Required Task	Approach
Create a settings location template.	Generator
Place the settings location template.	Template Catalog Path
Enable Folder Redirection.	Microsoft Desktop Optimization Pack (MDOP)
Deploy the User Experience Virtualization (UE-V) Agent.	

QUESTION 3

DRAG DROP

You support a computer that runs Windows 8 Enterprise. You want to create a dual-boot configuration by using the native boot virtual hard disk (VHD) method. You need to create an alternate Windows 8 installation. Which three actions should you perform in sequence? (To answer, move the appropriate actions from the list of actions to the answer area and arrange them in the correct order.)

	Answer Area
Update the system partition by using the Bootrec tool, and then modify the boot menu by using the BCDedit tool.	
Update the system partition by using the BCDedit tool, and then modify the boot menu by using the Bootrec tool.	
Install Windows 8 into a virtual hard disk (VHD) file.	
Edit the boot configuration by using the BCDedit tool on the virtual hard disk (VHD).	
Use the Computer Management console to create a virtual hard disk (VHD) file, and then create an active primary partition.	
Use Windows System Image Manager to create a virtual hard disk (VHD) file, and then create an active primary partition.	
Edit the boot configuration by using the BCDedit tool on the original Windows 8 installation.	

Correct Answer:

	Answer Area
Update the system partition by using the Bootrec tool, and then modify the boot menu by using the BCDedit tool.	Use Windows System Image Manager to create a virtual hard disk (VHD) file, and then create an active primary partition.
Update the system partition by using the BCDedit tool, and then modify the boot menu by using the Bootrec tool.	
Install Windows 8 into a virtual hard disk (VHD) file.	
Edit the boot configuration by using the BCDedit tool on the virtual hard disk (VHD).	Install Windows 8 into a virtual hard disk (VHD) file.
Use the Computer Management console to create a virtual hard disk (VHD) file, and then create an active primary partition.	Edit the boot configuration by using the BCDedit tool on the original Windows 8 installation.
Use Windows System Image Manager to create a virtual hard disk (VHD) file, and then create an active primary partition.	
Edit the boot configuration by using the BCDedit tool on the original Windows 8 installation.	

QUESTION 4

You administer client computers that run Windows 8 Enterprise deployed by using Windows Deployment Services (WDS). Your company recently purchased 25 new tablets that run Windows 8 Pro. For all 25 new tablets, you want to replace the existing Windows 8 Pro installation with Windows 8 Enterprise. You need to deploy the Windows 8 Enterprise image to all 25 tablets simultaneously by using the existing WDS infrastructure. What should you do?

- A. Start the tablets from the Windows To Go workspace.
- B. Start the tablets from a USB flash drive with a customized Windows Preinstallation Environment (WinPE).
- C. Start the tablets normally. Map the Windows Image (WIM) file from a WDS network share.
- D. Start the tablets from a customized Windows Recovery Environment (WinRE).

Correct Answer: B

Explanation:

Walkthrough: Create a Custom Windows PE Image
To create a bootable UFD (USB Flash Drive)

During a running Windows Vista operation system or a Windows PE session, insert your UFD device.

At a command prompt, use Diskpart to format the device as FAT32 spanning the entire device, setting the partition to active. For example,

```
diskpart
select disk 1
clean
create partition primary size=<size of device>
select partition 1
active
format fs=fat32
assign
exit
```

where the value of disk 1 is equal to UFD.

On your technician computer, copy all the content in the \ISO directory to your UFD device.

You can manually create the directory structure or use the xcopy command to automatically build and copy the appropriate files from your technician computer to your UFD device. For example,

```
xcopy c:\winpe_x86\iso\*.*/s /e /f f:\
```

where c is the letter of your technician computer hard disk and f is the letter of your UFD device.

Reference:

[http://technet.microsoft.com/en-us/library/cc709665\(v=ws.10\).aspx](http://technet.microsoft.com/en-us/library/cc709665(v=ws.10).aspx)

QUESTION 5

DRAG DROP

You support computers that run Windows 8 Enterprise. Company policy requires that Microsoft Internet Explorer be the only browser allowed and supported. You collect software metering data and discover that several users are running other third- party browsers. You need to block other web browsers from running on the computers. All other applications should be allowed. Which three actions should you perform in sequence? (To answer, move the appropriate actions from the list of actions to the answer area and arrange them in the correct order.)

<ul style="list-style-type: none"> Open User Configuration of Local Computer Policy. Open Computer Configuration of Local Computer Policy. Enforce Script rules. Create new AppLocker Deny Script rules. Create new AppLocker Deny Executable rules. Enforce Executable rules. Select Software Restriction Policies and set the default to Disallowed. 	> <	Answer Area
---	--------	-------------

Correct Answer:

<ul style="list-style-type: none"> Open User Configuration of Local Computer Policy. Open Computer Configuration of Local Computer Policy. Enforce Script rules. Create new AppLocker Deny Script rules. Create new AppLocker Deny Executable rules. Enforce Executable rules. Select Software Restriction Policies and set the default to Disallowed. 	> <	Answer Area <ul style="list-style-type: none"> Open Computer Configuration of Local Computer Policy. Enforce Executable rules. Create new AppLocker Deny Executable rules.
---	--------	--

QUESTION 6

DRAG DROP

You support computers that run windows 8 Enterprise. AppLocker policies are deployed. Company policy states that AppLocker must be disabled. You need to disable AppLocker. Which three actions should you perform in sequence? (To answer, move the appropriate actions from the list of actions to the answer area and arrange them in the correct order.)

Action	Answer Area
Delete all AppLocker rules.	
Disable the Application Identity service.	
Run the gpupdate /force command.	
Delete all Software Restriction Policy rules.	
Insert the Windows 8 Pro installation DVD into the optical drive of your computer. Run the setup.exe command with the /checkupgradeonly option.	
Install Windows Assessment and Deployment Kit (ADK).	

Correct Answer:

Action	Answer Area
Delete all AppLocker rules.	Delete all AppLocker rules.
Disable the Application Identity service.	Disable the Application Identity service.
Run the gpupdate /force command.	Run the gpupdate /force command.
Delete all Software Restriction Policy rules.	
Insert the Windows 8 Pro installation DVD into the optical drive of your computer. Run the setup.exe command with the /checkupgradeonly option.	
Install Windows Assessment and Deployment Kit (ADK).	

QUESTION 7

DRAG DROP

You administer laptops and virtual desktop computers that run Windows 8 and are joined to an Active Directory domain. Your company provides virtual desktop computers to all users. Employees in the sales department also use laptops, sometimes connected to the company network and sometimes disconnected from the company network. You want sales department employees to have the same personal data, whether they are using their virtual desktop computers or their laptops. You need to configure the network environment to meet the requirements. Which three actions should you perform in sequence? (To answer, move the appropriate actions from the list of actions to the answer area and arrange them in the correct order.)

Actions

- Configure folder redirection for the employees' domain accounts to the network share.
- Configure slow link detection for the laptops.
- Create a network share.
- Disable offline files on the network share.
- Create a super-mandatory profile for all sales department employees on the network share.
- Set the primary computer for all employees from the sales department.
- Configure offline files for the laptops.

Answer Area

Correct Answer:

Actions

- Configure folder redirection for the employees' domain accounts to the network share.
- Configure slow link detection for the laptops.
- Create a network share.
- Disable offline files on the network share.
- Create a super-mandatory profile for all sales department employees on the network share.
- Set the primary computer for all employees from the sales department.
- Configure offline files for the laptops.

Answer Area

- Create a network share.
- Configure folder redirection for the employees' domain accounts to the network share.
- Configure offline files for the laptops.

QUESTION 8

You manage a network that includes computers that run Windows 8 Enterprise. All of the computers on the network are members of an Active Directory domain. The company recently proposed a new security policy that prevents users from synchronizing applications settings, browsing history, favorites, and passwords from the computers with their Microsoft accounts. You need to enforce these security policy requirements on the computers. What should you do?

- A. From each computer, navigate to Change Sync Settings and set the Sync Your Settings options for Apps, Browser, and Passwords to Off.
- B. On the Group Policy Object, configure the Accounts: Block Microsoft accounts Group Policy setting to Users can't add or log on with Microsoft accounts.

- C. On the Group Policy Object, configure the Accounts: Block Microsoft accounts Group Policy setting to Users can't add Microsoft accounts.
- D. From each computer, navigate to Change Sync Settings and set the Sync Your Settings option to Off.

Correct Answer: B

Explanation:

Windows 8 Group Policy Settings: Blocking Connected Accounts

Reference:

<http://sdmssoftware.com/group-policy/windows-8-group-policy-settings-blocking-connected-accounts/>

"Connected Accounts". This is the feature in Windows 8 where you can associate your local or domain user account with your Microsoft account (e.g. Live ID) for the purposes of synchronizing your Windows settings across all of your Windows devices. It's a nice feature, but not necessarily one that enterprises might find helpful-- given the possibility of stuff that may be considered private to the organization such as passwords to websites and apps, being synchronized externally.

The setting is under Computer Configuration\Windows Settings\Security Settings\Local Policies\Security Options\Accounts:Block Microsoft Accounts

QUESTION 9

You administer a computer that runs Windows 8 Pro. You need to create a backup copy of the computer system drive. The backup copy must support a complete system drive restore to another computer. What should you do?

- A. Create a system restore point.
- B. Run the bcdedit /export command.
- C. Perform a backup to a shared folder by using the wbadmin command with the -allcritical switch.
- D. Create a system recovery drive.

Correct Answer: C

Explanation:

allCritical

Specifies that all critical volumes (volumes that contain operating system's state) be included in the backups. This parameter is useful if you are creating a backup for bare metal recovery. It should be used only when -backupTarget is specified, otherwise the command will fail. Can be used with the -include option.

References:

[http://technet.microsoft.com/en-us/library/cc742083\(v=ws.10\).aspx](http://technet.microsoft.com/en-us/library/cc742083(v=ws.10).aspx)

QUESTION 10

You manage client computers that run Windows 8 and are part of a workgroup. These computers are configured to use Microsoft Update. Updates are downloaded every day at 10:00 and installed automatically. Users report that their computers sometimes reboot without any interaction. You need to prevent unplanned automatic reboots of the computers. What should you do?

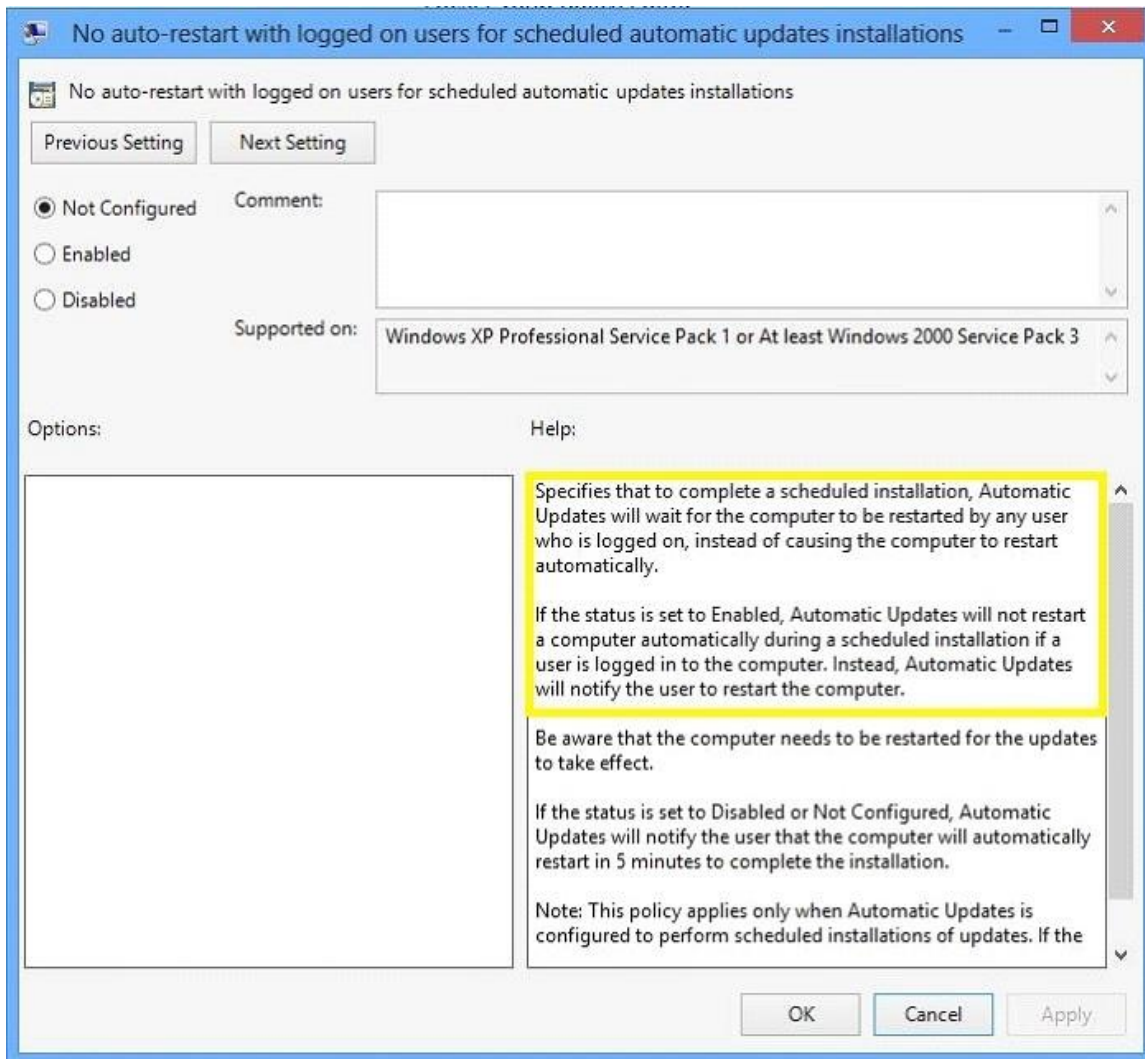
- A. Enable the Reschedule Automatic Updates scheduled installations policy setting.

- B. Disable the Re-prompt for restart with scheduled installations policy setting.
- C. Enable the Automatic Updates detection frequency policy setting.
- D. Enable the No auto-restart with logged on users for scheduled automatic updates installations policy setting.

Correct Answer: D

Explanation:

If you Enable the No auto-restart with logged on users for scheduled automatic updates installations policy setting the computer will not restart until the user performs a manual restart.

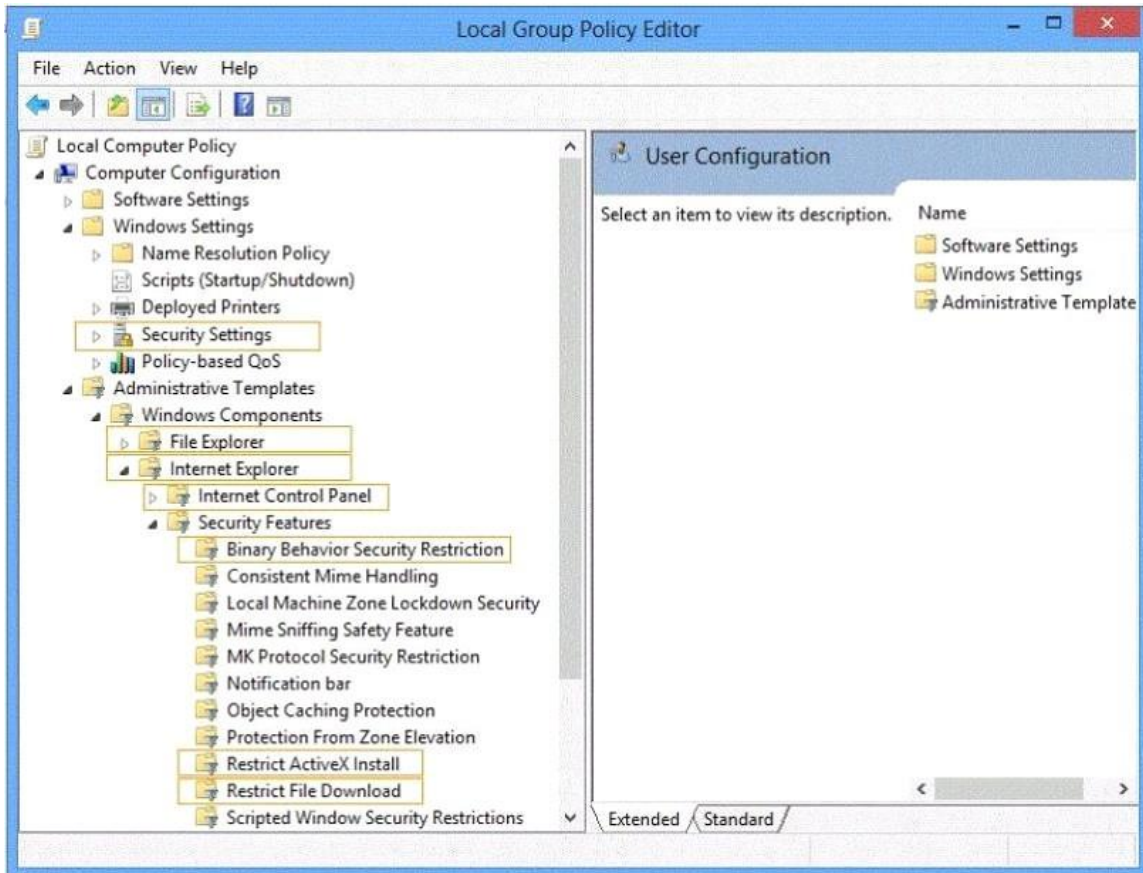


<http://technet.microsoft.com/en-us/library/cc786181%28v=ws.10%29.aspx>

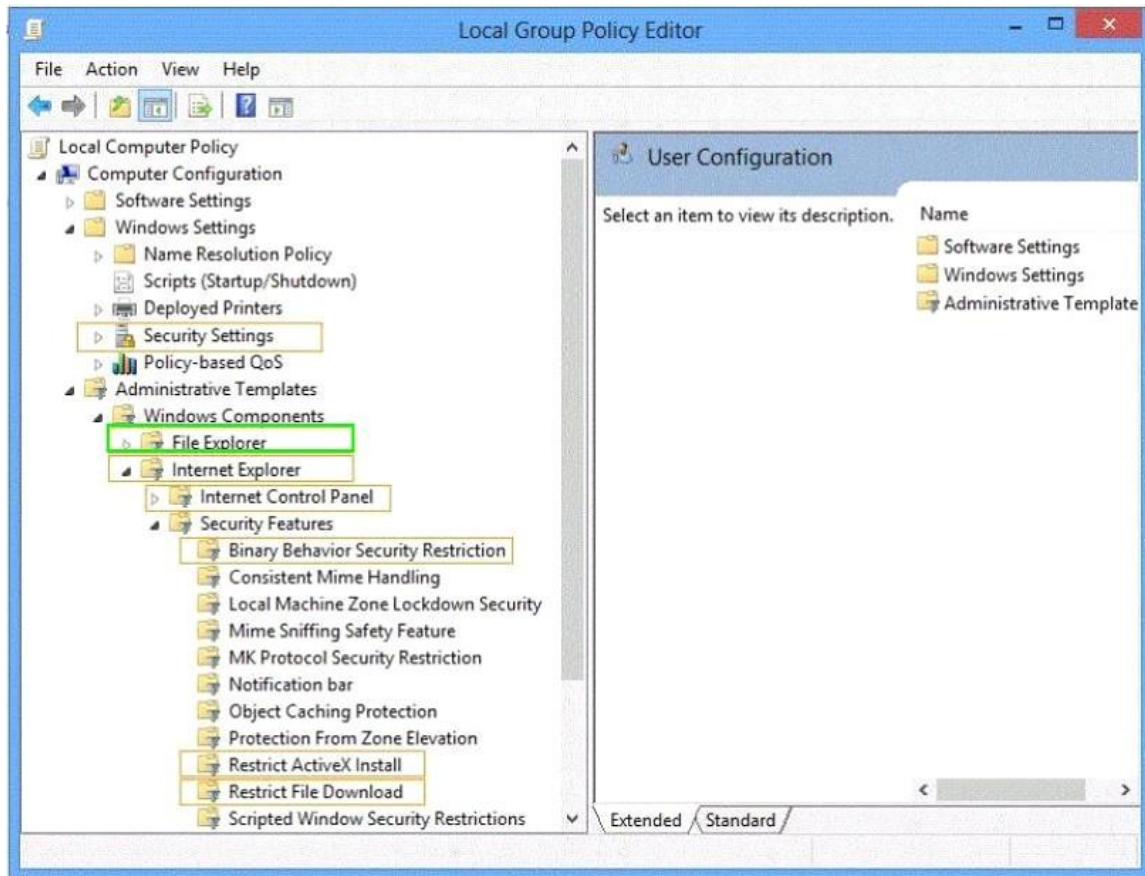
QUESTION 11

HOTSPOT

You support desktop computers that run Windows 8 Enterprise. One computer is a member of a workgroup and is used as a guest computer in a reception area. You need to configure the SmartScreen setting to require administrator approval before running downloaded unknown software on the desktop computer. Which policy setting should you use? (To answer, select the appropriate object in the answer area.)



Correct Answer:



QUESTION 12

You administer computers that run Windows 8 Pro. Your company uses credit card readers that require a custom driver supplied by the manufacturer. The readers frequently are moved from computer to computer. Your company recently purchased five new computers that run Windows 8 Pro. You want the required drivers to be installed automatically and silently when users connect the readers to the new computers. You need to pre-stage the credit card reader driver on the new computers. What should you do?

- A. Add a Registry key with a path to a network shared folder that has the driver installation files.
- B. Run the pnputil.exe utility. Specify the document scanner driver.
- C. Add a Registry key with a path to a local folder on every computer. Copy the driver installation files to the folder.
- D. Run the dism.exe utility. Copy the driver files to the C:\Windows\System32\drivers folder in the WIM image.

Correct Answer: B

Explanation:

[http://technet.microsoft.com/en-us/library/ff800798\(v=ws.10\).aspx](http://technet.microsoft.com/en-us/library/ff800798(v=ws.10).aspx)

Pnputil.exe is a command line utility that you can use to manage the driver store. You can use Pnputil to add driver packages, remove driver packages, and list driver packages that are in the store.

QUESTION 13

You support computers that run Windows 8 Enterprise. Your company protects all laptops by using the BitLocker Network Unlock feature. Some employees work from home. You need to ensure that employees can log on to their laptops when they work from home. What should you do?

- A. Provide employees their BitLocker PINs.
- B. Ensure that the Trusted Platform Module (TPM) chips in the laptops are version 1.2 or greater.
- C. Enable BitLocker To Go.
- D. Have users run the `Manage-bde.exe -unlock` command before they disconnect from the company network.

Correct Answer: A

Explanation:

In addition to the option of creating a startup key, you have the option of creating a startup personal identification number (PIN). You can create either the startup key or the startup PIN, but not both. The startup PIN can be any number that you choose from 4 to 20 digits in length. The PIN is stored on your computer. You will have to type the PIN each time you start the computer.

Reference:

<http://windows.microsoft.com/en-US/windows-vista/What-is-a-BitLocker-Drive-Encryption-startup-key-or-PIN>

<http://support.microsoft.com/kb/2855131>

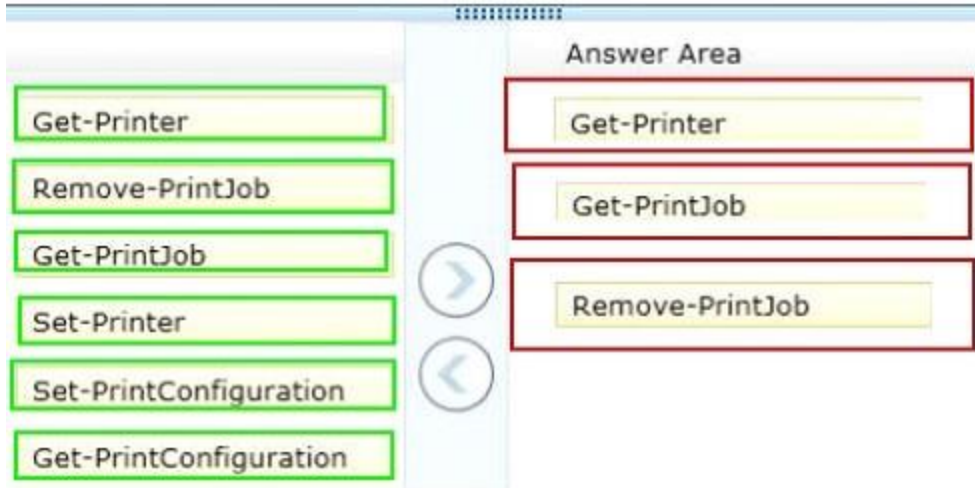
QUESTION 14

DRAG DROP

You administer computers and printers on your company network. The computers run Windows 8 Pro. You need to remove a print job from a print queue by using a remote PowerShell session. Which three commands should you run in sequence? (To answer, move the appropriate commands from the list of commands in the answer area and arrange them in the correct order.)

The screenshot shows a drag-and-drop interface. On the left, there is a list of six PowerShell commands in yellow boxes: `Get-Printer`, `Remove-PrintJob`, `Get-PrintJob`, `Set-Printer`, `Set-PrintConfiguration`, and `Get-PrintConfiguration`. To the right of this list are two circular arrows, one pointing right and one pointing left. On the right side, there is a grey box labeled "Answer Area" where the commands should be placed in the correct order.

Correct Answer:



QUESTION 15

You administer Windows 8 Pro and Windows RT tablets for your company. Your company network includes a Windows Server 2012 domain and Microsoft Exchange 2010 with ActiveSync and Outlook Web Access. Users will be using the tablets outside of the corporate network. The Microsoft Exchange ActiveSync policy is configured to require an alphanumeric password. You need to ensure an alphanumeric password is required on all Windows 8 tablets. What should you do?

- A. From the Mail app, add the user's Exchange account.
- B. Set up New Partnership in Sync Center.
- C. From Sync your Settings, set Password to Off.
- D. Create a user profile by using a Microsoft account.

Correct Answer: A

Explanation:

<http://technet.microsoft.com/en-us/library/bb123783%28v=exchg.150%29.aspx>

<http://office.microsoft.com/en-us/exchange/microsoft-exchange-features-cloud-email-services-FX103737962.aspx>

EnsurePass.com Members Features:

1. Verified Answers researched by industry experts.
2. Q&As are downloadable in PDF and VCE format.
3. 98% success Guarantee and **Money Back** Guarantee.
4. Free updates for **180** Days.
5. **Instant Access to download the Items**

View list of All Exam provided:

<http://www.ensurepass.com/certifications?index=A>

To purchase Lifetime Full Access Membership click here:

<http://www.ensurepass.com/user/register>

Valid Discount Code for 2015: JREH-G1A8-XHC6

To purchase the HOT Microsoft Exams:

<u>Microsoft</u>			
70-243	70-347	70-466	70-515
70-246	70-410	70-467	70-516
70-247	70-411	70-480	70-519
70-321	70-412	70-483	70-583
70-331	70-413	70-484	70-640
70-332	70-414	70-485	70-649
70-336	70-417	70-486	70-668
70-337	70-461	70-487	70-680
70-341	70-462	70-488	70-687
70-342	70-463	70-489	70-688
70-346	70-464	70-513	70-689

