



Microsoft

Exam 70-692

Upgrading Your Windows XP Skills to MCSA Windows 8.1

Version: 6.1

[Total Questions: 76]

Question No : 1

A company has an Active Directory Domain Services (AD DS) domain. All company employees work on their personally owned computers, which are not members of the domain. The computers are running Windows XP Home, Windows Vista Business, Windows 7 Home Premium, or Windows 8.1. The company is a volume license subscriber.

The company plans to deploy Group Policies to all computers.

You need to ensure that every employee's computer is subject to the Group Policies.

What should you do first?

- A. Start each computer from a USB flash drive on which you have installed BitLocker To Go.
- B. Start each computer from a USB flash drive on which you have installed Windows To Go.
- C. Join all the computers to the domain.
- D. Join all the computers to the same homegroup.

Answer: B

Question No : 2 DRAG DROP

You are on a company's desktop support team.

You receive a call from an employee. The employee is having problems installing an old printer on a Windows 8.1 Pro computer. The employee asks you to look at the driver that is installed and assess if it is the correct one.

You need to open the device manager remotely.

Which four actions should you perform in sequence? (To answer, move the appropriate four actions from the list of actions to the answer area and arrange them in the correct order.)

Actions	Answer Area
At the Run command, type mmc devmgmt.msc and select Enter.	
At the Select Computer dialog box, enter the remote computer.	
Expand System Tools and select Device Manager.	
On the Action menu, click Connect to another computer .	
Select remote computer from Device Manager Action Menu.	
At the Run command, type mmc compmgmt.msc and select Enter.	

Answer:

Actions	Answer Area
At the Run command, type mmc devmgmt.msc and select Enter.	At the Run command, type mmc compmgmt.msc and select Enter.
At the Select Computer dialog box, enter the remote computer.	On the Action menu, click Connect to another computer .
Expand System Tools and select Device Manager.	At the Select Computer dialog box, enter the remote computer.
On the Action menu, click Connect to another computer .	Expand System Tools and select Device Manager.
Select remote computer from Device Manager Action Menu.	
At the Run command, type mmc compmgmt.msc and select Enter.	

Explanation:

1. At the Run command, type `mmc compmgmt.msc` and select Enter.
2. On the Action menu, click Connect to another computer.
3. At the Select Computer dialog box, enter the remote computer.
4. Expand System Tools and select Device Manager.

<http://technet.microsoft.com/en-us/library/cc754081.aspx>

Open Device Manager

To open Computer Management by using the command line

At a command prompt, in the Start Search box, or the Run box, type the command:

`mmc compmgmt.msc`

To open Device Manager on a remote computer

1. Open Computer Management using either of the procedures in the previous section.
2. On the Action menu, click Connect to another computer.
3. In the Select Computer dialog box, do one of the following:

* In the Another computer text box, type the name of the computer to access, and then click OK.

* Click Browse, and then click Advanced to find the computer you want. Click OK when you have selected the correct computer.

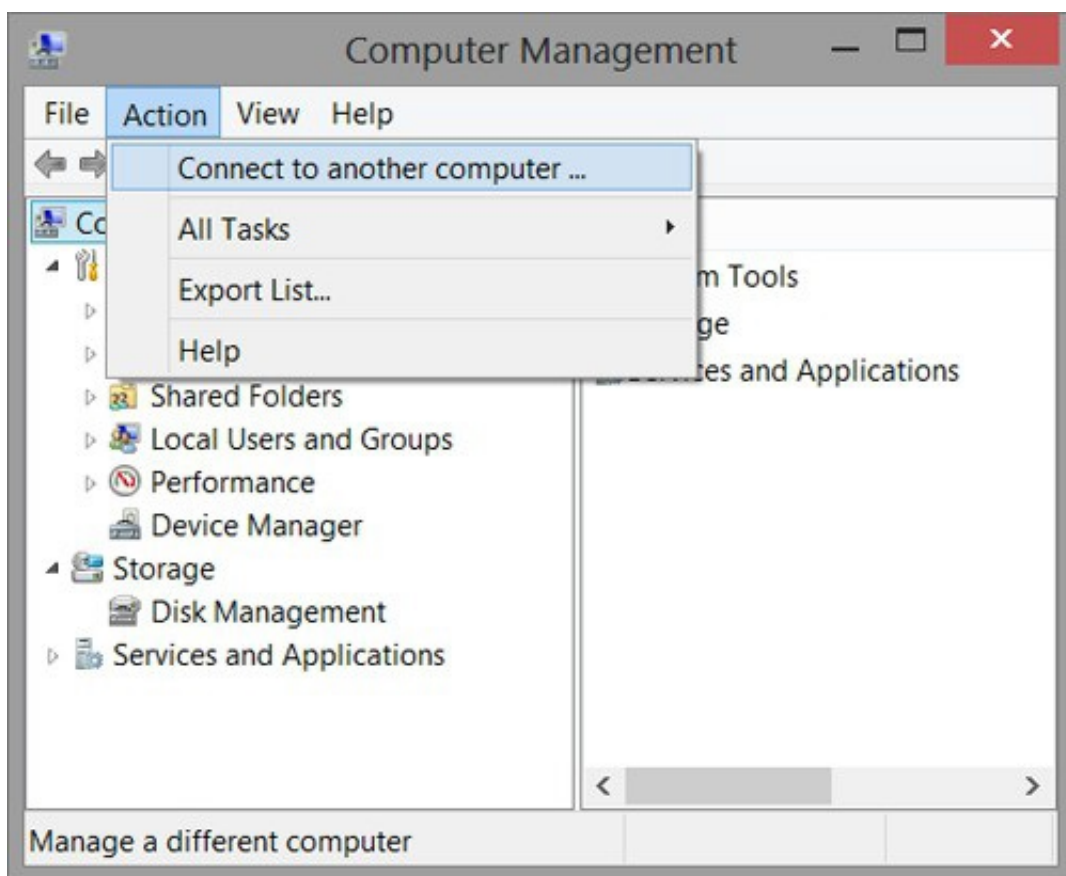
If the connection is successful, the name of the computer appears in parentheses next to the Computer Management label in the upper left.

Note: Access to Device Manager on a remote computer in this manner is "read-only." You cannot make any changes to devices or their settings.

Further Information:

<http://john.bryntze.net/jbkb-v2/certification-exam-70-687-configuring-windows-8-part-3-configure-networkconnectivity-15/>

Modify settings using MMC you can start Computer Management and then go Actions -> Connect to a another computer ...



C:\Users\Chaudhry\Desktop\1.jpg

For some of these settings remote registry service must be enabled and of course permission on the remote client.

Question No : 3 HOTSPOT

Your company has client computers that run either Windows XP or Windows 7.

You plan to deploy Windows 8.1 Enterprise to all of the computers.


You plan to deploy the applications shown in the following table.

Application name	Description
App1	A line-of-business (LOB) application designed for Windows XP that does not run natively on Windows 8.1. No vendor updates are available. The application must be available to users when the users are disconnected from the corporate network.
App2	A Windows Store app that must be made available to users before Windows 8.1 is installed on the computers.
App3	An existing line-of-business (LOB) desktop application. Occasionally, certain features will be used by some users after App3.1 is deployed as well. App3 must run locally.
App3.1	A new version of App3 that provides additional functionality, but removes some of the features of App3. App3.1 and App3 use some of the same registry keys, which cause the applications to be incompatible. App3.1 must run locally.


You need to recommend the appropriate technology to deploy each application. Each solution must ensure that the users can access all of the applications. The solution that uses the least amount of system resources must be selected, whenever possible.

Which technology should you recommend for each application? (To answer, select the appropriate technology for each application in the answer area.)


Answer Area

App1: 


Client Hyper-V
Microsoft Application Virtualization (App-V)
Virtual Desktop Infrastructure (VDI)
Windows XP Mode

App2: 

Client Hyper-V
Microsoft Application Virtualization (App-V)
Virtual Desktop Infrastructure (VDI)
Windows XP Mode

App3: 


Client Hyper-V
Microsoft Application Virtualization (App-V)
Virtual Desktop Infrastructure (VDI)
Windows XP Mode


App3.1: 


Client Hyper-V
Microsoft Application Virtualization (App-V)
Virtual Desktop Infrastructure (VDI)
Windows XP Mode


Answer:

Answer Area


App1: 
Client Hyper-V
Microsoft Application Virtualization (App-V)
Virtual Desktop Infrastructure (VDI)
Windows XP Mode


App2: 
Client Hyper-V
Microsoft Application Virtualization (App-V)
Virtual Desktop Infrastructure (VDI)
Windows XP Mode


App3: 
Client Hyper-V
Microsoft Application Virtualization (App-V)
Virtual Desktop Infrastructure (VDI)
Windows XP Mode


App3.1: 
Client Hyper-V
Microsoft Application Virtualization (App-V)
Virtual Desktop Infrastructure (VDI)
Windows XP Mode

Explanation Area

App1: 
Client Hyper-V
Microsoft Application Virtualization (App-V)
Virtual Desktop Infrastructure (VDI)
Windows XP Mode

App2: 
Client Hyper-V
Microsoft Application Virtualization (App-V)
Virtual Desktop Infrastructure (VDI)
Windows XP Mode

App3: 
Client Hyper-V
Microsoft Application Virtualization (App-V)
Virtual Desktop Infrastructure (VDI)
Windows XP Mode

App3.1: 
Client Hyper-V
Microsoft Application Virtualization (App-V)
Virtual Desktop Infrastructure (VDI)
Windows XP Mode

<http://technet.microsoft.com/en-us/library/cc783635%28v=ws.10%29.aspx>

Question No : 4 HOTSPOT

You have a client computer that runs Windows 8 Pro. The computer contains a storage pool.

You need to remove a disk named Disk 2 from the storage pool.

What should you configure first? (To answer, select the appropriate option in the answer area.)

Control Panel > System and Security > Storage Spaces

Manage Storage Spaces

Use Storage Spaces to save files to two or more drives to help protect you from a drive failure. Storage Spaces also lets you easily add more drives if you run low on capacity. If you don't see task links, click Change settings.


Change settings

Storage pool





Using 3.50 GB of 505 GB pool capacity

Create a storage space
Add drives
Rename pool

Storage spaces

	Storage space (E:) Two-way mirror 126 GB Using 2.00 GB pool capacity	✓ Okay	View files Change Delete
---	---	--------	--------------------------------

Physical drives

	Disk 1 Attached via ATA 1.18 % used Providing 126 GB pool capacity	✓ Okay	Rename
	Disk 2 Attached via SCSI 1.18 % used Providing 126 GB pool capacity	✓ Okay	Rename
	Virtual HD ATA Device Attached via ATA 0.19 % used Providing 126 GB pool capacity	✓ Okay	Rename Remove
	Microsoft Virtual Disk Attached via SCSI 0.19 % used Providing 126 GB pool capacity	✓ Okay	Rename Remove

Answer:

Control Panel > System and Security > Storage Spaces

Manage Storage Spaces


Use Storage Spaces to save files to two or more drives to help protect you from a drive failure. Storage Spaces also lets you easily add more drives if you run low on capacity. If you don't see task links, click [Change settings](#).

Storage pool





Using 3.50 GB of 505 GB pool capacity

[Create a storage space](#)
[Add drives](#)
[Rename pool](#)

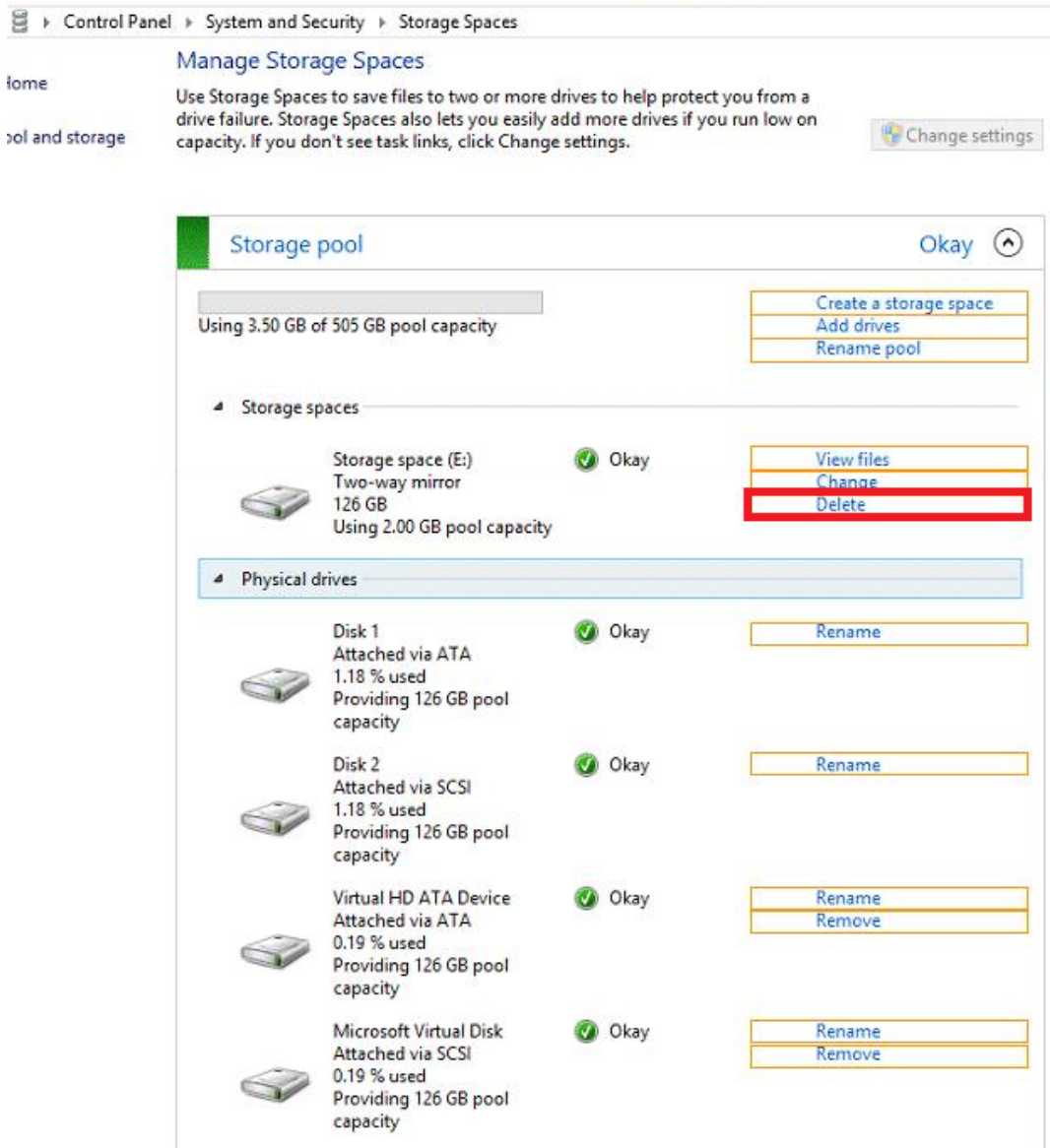
Storage spaces

	Storage space (E:) Two-way mirror 126 GB Using 2.00 GB pool capacity	✓ Okay	View files Change Delete
---	---	--------	--

Physical drives

	Disk 1 Attached via ATA 1.18 % used Providing 126 GB pool capacity	✓ Okay	Rename
	Disk 2 Attached via SCSI 1.18 % used Providing 126 GB pool capacity	✓ Okay	Rename
	Virtual HD ATA Device Attached via ATA 0.19 % used Providing 126 GB pool capacity	✓ Okay	Rename Remove
	Microsoft Virtual Disk Attached via SCSI 0.19 % used Providing 126 GB pool capacity	✓ Okay	Rename Remove

Explanation:



Storage Spaces enables cost-effective, highly available, scalable, and flexible storage solutions for business-critical (virtual or physical) deployments. Storage Spaces delivers sophisticated storage virtualization capabilities, which empower customers to use industry-standard storage for single computer and scalable multi-node deployments. It is appropriate for a wide range of customers, including enterprise and cloud hosting companies, which use Windows Server for highly available storage that can cost-effectively grow with demand.

With Storage Spaces the Windows storage stack has been fundamentally enhanced to incorporate two new abstractions:

- ✍ Storage pools. A collection of physical disks that enable you to aggregate disks, expand capacity in a flexible manner, and delegate administration.
- ✍ Storage spaces. Virtual disks created from free space in a storage pool. Storage spaces have such attributes as resiliency level, storage tiers, fixed provisioning, and precise administrative control.

Storage Spaces is manageable through the Windows Storage Management API in Windows Management Instrumentation (WMI) and Windows PowerShell, and through the

File and Storage Services role in Server Manager. Storage Spaces is completely integrated with failover clustering for high availability, and it is integrated with CSV for scale-out deployments.

<http://technet.microsoft.com/en-us/library/hh831739.aspx>

Question No : 5

Your company has a main office that has a connection to the Internet.

The company has 100 Windows 8.1 Pro client computers that run Microsoft Office 2010.

You purchase a subscription to Office 365 for each user. You download the Office Deployment Tool for Click-to-Run,

You need to deploy Office 365 ProPlus to the computers. The solution must minimize the amount of traffic over the Internet connection.

Which two actions should you perform? (Each correct answer presents part of the solution. Choose two.)

- A. On a file server, run setup.exe and specify the /download parameter.
- B. On each client computer, run setup.exe and specify the /configure parameter.
- C. On a file server, run setup.exe and specify the /configure parameter.
- D. On each client computer, run setup.exe and specify the /download parameter,

Answer: C,D

Explanation: <http://technet.microsoft.com/en-us/windows/jj219423%28v=office.14%29.aspx>

Question No : 6 DRAG DROP

Your company recently purchased 25 new laptops. All 25 laptops have the same hardware configuration and do not have any operating system installed.

You have been asked to deploy Windows 8 on these laptops. You have installed and configured Windows 8 on a reference laptop.

You need to create an image and deploy it to the 25 new laptops.

Which four actions should you perform in sequence? (To answer, move the appropriate actions from the list of actions to the answer area and arrange them in the correct order.)

	Answer Area
Start the destination laptop from the Windows PE media. Use the Diskpart tool to create the desired partition structure.	
Start the destination laptop from the Windows PE media, and then use the Fdisk tool to create the desired partition structure.	
Remove computer-specific information from the reference laptop.	
Start the reference laptop from the Windows PE media. Use the DISM tool to capture the image, and then upload the image file to a network share.	
Use Windows Easy Transfer (WET) to transfer the image from network share, and then use the DISM tool to apply the image to your windows partition.	
Connect to the network share, and then use the DISM tool to apply the image to your windows partition.	

Answer:

Dumps with VCE and PDF (+Free VCE Software)

	Answer Area
Start the destination laptop from the Windows PE media. Use the Diskpart tool to create the desired partition structure.	Remove computer-specific information from the reference laptop.
Start the destination laptop from the Windows PE media, and then use the Fdisk tool to create the desired partition structure.	Start the reference laptop from the Windows PE media. Use the DISM tool to capture the image, and then upload the image file to a network share.
Remove computer-specific information from the reference laptop.	Start the destination laptop from the Windows PE media, and then use the Fdisk tool to create the desired partition structure.
Start the reference laptop from the Windows PE media. Use the DISM tool to capture the image, and then upload the image file to a network share.	Connect to the network share, and then use the DISM tool to apply the image to your windows partition.
Use Windows Easy Transfer (WET) to transfer the image from network share, and then use the DISM tool to apply the image to your windows partition.	
Connect to the network share, and then use the DISM tool to apply the image to your windows partition.	

Explanation:

Box 1:

Remove computer-specific information from the reference laptop.

Box 2:

Start the reference laptop from the Windows PE media. Use the DISM tool to capture the image, and then upload the image file to a network share.

Box 3:

Start the destination laptop from the Windows PE media. Use the Diskpart tool to create the desired partition structure.

Box 4:

Connect to the network share, and then use the DISM tool to apply the image to your windows partition.

Note:

- * You can create a reference computer by deploying Windows, and then removing the computer-specific information from the system.
- * On the destination computer, you will create a structure for the partitions where you apply your images. The partition structure on the destination computer must match the partition structure of the reference computer.
- * Use the Diskpart tool and the DISM tool to apply Windows images to one or more partitions onto a computer for deployment.
- * Use the DISM tool to apply images to your Windows partition.

Question No : 7

You support Windows 8.1 Pro laptops that are part of a workgroup.

An employee is unable to start Windows Mobility Center on his laptop.

You need to make it possible for the employee to use Windows Mobility Center on the laptop.

What should you do?

- A. Use Add features to Windows 8.1 to add Windows Mobility Center.
- B. Use Turn Windows features on or off in Programs and Features to enable Windows Mobility Center.
- C. Use Local Group Policy Editor to set Turn off Windows Mobility Center to Not Configured.
- D. Use programs and Features to repair the installation of Windows Mobility Center.

Answer: C

Question No : 8

A company has 100 client computers that run Windows 8.1.

You plan to install a custom app that requires a license key.

You need to ensure that the installation process does not prompt for the manual entry of a

license key.

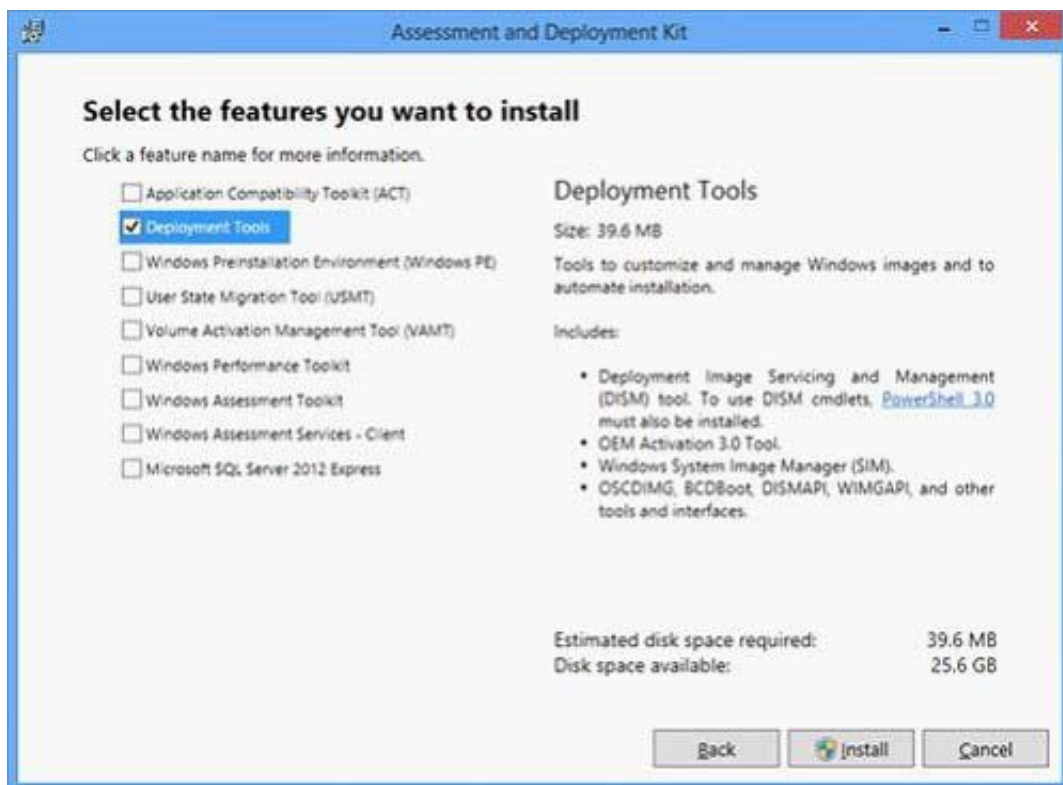
What should you do?

- A. Install and run the Microsoft Deployment Toolkit.
- B. Install and run the Windows Application Compatibility Toolkit.
- C. Install and run the Windows App Certification Kit.
- D. Install and run the Microsoft Assessment and Planning Toolkit.

Answer: A

Explanation:

<http://tweaks.com/windows/65179/how-to-install-windows-8-without-a-product-key/>
Windows Assessment and Deployment Kit for Windows 8.1:



C:\Users\Chaudhry\Desktop\1.jpg

<http://technet.microsoft.com/en-us/library/hh825212.aspx>

Step-by-Step: Windows 8 Deployment for IT Professionals

This guide uses the tools included in the Windows Assessment and Deployment Kit (Windows ADK). This includes Windows System Image Manager (Windows SIM), the Deployment Imaging Servicing and Management tool (DISM), and Windows Preinstallation Environment (Windows PE). In addition to the tools that this guide describes, other tools are available in the Windows ADK that you can use to prepare your organization for migrating to Windows 8 and Windows 8.1:

<http://technet.microsoft.com/en-us/library/hh825079.aspx>

DISM Global Options for Command-Line Syntax

Global options can be added to most of the servicing and imaging options in the Deployment Image Servicing and Management (DISM) tool. These options can be used to access the command-line help, specify the location of files to use, and control logging.

Basic Syntax for Servicing Commands

After you have mounted or applied a Windows® image so that it is available offline as a flat file structure, you can specify any DISM global options, the servicing option that will update your image, and the location of the offline image. You can use only one servicing option per command line. If you are servicing a running computer, you can use the /Online option instead of specifying the location of the offline Windows image. The commands and options that are available for servicing an image depend on which Windows operating system you are servicing. They also depend on whether the image is offline or a running operating system. All commands work on an offline Windows image. Subsets of the commands are available for servicing a running operating system.

The base syntax for DISM servicing commands is:

```
DISM.exe {/Image:<path_to_image> | /Online} [dism_global_options] {servicing_option} [<servicing_argument>]
```

<http://technet.microsoft.com/en-us/library/hh824882.aspx>

DISM App Package (.appx or .appxbundle) Servicing Command-Line Options

You can use app package-servicing commands to add, remove, and list provisioned app packages (.appx or .appxbundle) in a Windows image. An .appxbundle, new for Windows 8.1, is a collection of app and resource packages used together to enrich the app experience, while minimizing the disk footprint on a given PC.

Provisioned app packages are added to a Windows image and are then installed for every new or existing user profile the next time the user logs on. For more information, including requirements for app package provisioning, see Sideload Apps with DISM.

You can also use Windows PowerShell to add, remove, and list app packages (.appx or .appxbundle) per image or per user in a Windows installation.

<http://technet.microsoft.com/en-us/library/hh852635.aspx>

Sideload Apps with DISM

You can sideload line-of-business (LOB) Windows Store apps to a Windows® image by using Windows PowerShell® or the Deployment Image Servicing and Management (DISM) platform. Windows Store apps are a new type of application that runs on:

Windows 8.1 devices
Windows 8 devices
Windows Server 2012 R2 devices
Windows Server 2012
Windows Embedded 8 Industry

Typically, Windows Store apps are available only through the Windows® Store. You can submit LOB Windows Store apps to the Windows Store and make them available outside of your enterprise. However, you can also develop Windows Store apps for use only within your enterprise and add them to Windows devices you manage through a process we call sideloading. Sideloaded apps do not have to be certified by or installed through the Windows Store.

Further information:

<http://msdn.microsoft.com/en-us/library/bb977556.aspx>

Microsoft Assessment and Planning Toolkit

The Microsoft Assessment and Planning Toolkit (MAP) is an agentless, automated, multi-product planning and assessment tool for quicker and easier desktop, server and cloud migrations. MAP provides detailed readiness assessment reports with extensive hardware and software information, and actionable recommendations to help organizations accelerate their IT infrastructure planning process, and gather more detail on assets that reside within their current environment. MAP also provides server utilization data for Hyper-V server virtualization planning; identifying server placements, and performing virtualization candidate assessments.

<http://msdn.microsoft.com/en-us/windows/apps/bg127575.aspx>

Windows App Certification Kit

Before you submit your app for certification and listing in the Windows Store, use the Windows App Certification

Kit to test your app and make sure it's ready to go.

<http://msdn.microsoft.com/en-us/library/windows/desktop/dd562082%28v=vs.85%29.aspx>

Application Compatibility Toolkit (ACT)

The Microsoft Application Compatibility Toolkit (ACT) is a lifecycle management tool that assists in identifying and managing your overall application portfolio, reducing the cost and time involved in resolving application compatibility issues, and helping you quickly deploy Windows and Windows updates.

Question No : 9 DRAG DROP

A company has client computers that run Windows 7. Each employee has two client computers: one at work and one at home.

The company plans to deploy Windows 8.1 to all client computers.

You are planning a deployment strategy.

You have the following requirements:

- ✎ Minimize deployment time.
- ✎ Ensure that the PC Reset and PC Refresh features can be utilized on all work computers.

You need to plan a deployment strategy that meets the requirements.

What should you do? (To answer, drag the appropriate installation method or methods to the correct location or locations in the answer area. Methods may be used once, more than once, or not at all. You may need to drag the split bar between panes or scroll to view content.)

Installation Methods

Install Windows 8.1 directly on the client computer.

Start the client computer from a USB flash drive on which you have installed Windows 8.1.

Start the client computer from a USB flash drive on which you have installed Windows To Go.

Start the client computer from a OneDrive location on which you have installed Windows 8.1.

Answer Area

Computer	Method
Work computer	Installation Method
Home computer	Installation Method

Answer:

Installation Methods

- Install Windows 8.1 directly on the client computer.
- Start the client computer from a USB flash drive on which you have installed Windows 8.1.
- Start the client computer from a USB flash drive on which you have installed Windows To Go.
- Start the client computer from a OneDrive location on which you have installed Windows 8.1.

Answer Area

Computer	Method
Work computer	Install Windows 8.1 directly on the client computer.
Home computer	Start the client computer from a USB flash drive on which you have installed Windows To Go.

Explanation:

Answer Area

Computer	Method
Work computer	Install Windows 8.1 directly on the client computer.
Home computer	Start the client computer from a USB flash drive on which you have installed Windows To Go.

C:\Users\Chaudhry\Desktop\1.jpg

Question No : 10

A company has an Active Directory Domain Services (AD DS) domain. All client computers run Windows 8.1.

You need to configure 20 portable computers so that they sleep after 20 minutes when

running on battery power. You must accomplish this goal by using the least amount of administrative effort.

Which two actions should you perform? (Each correct answer presents part of the complete solution. Choose two.)

- A. Edit the local Group Policy to configure the Shut Down options.
- B. Create a Group Policy object (GPO) that configures the Sleep Management settings.
- C. Create a Group Policy object (GPO) that configures the Power Management settings.
- D. Link the Group Policy object (GPO) to the organizational unit containing the portable computers.
- E. Edit the local Group Policy to configure the Power Management settings.

Answer: C,D

Explanation: Put the Laptops into an OU.

Create an appropriate GPO.

Link the GPO to the OU.

Note:

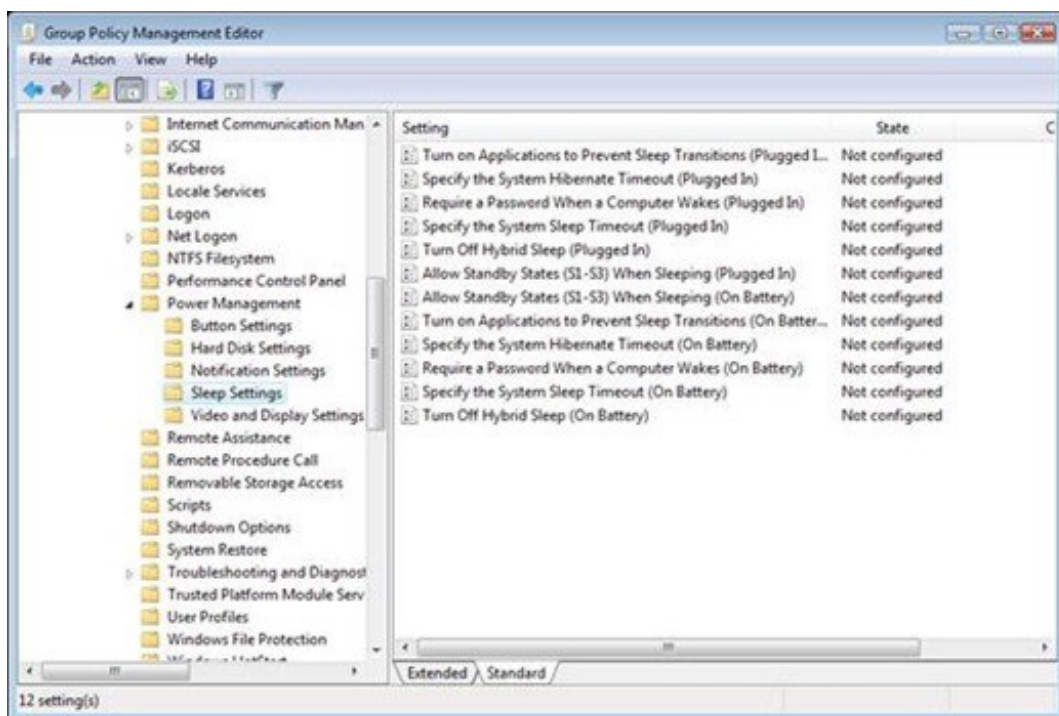
* Networking power management (not sleep management) refers to the set of features that you can configure to allow the computers in your network to save energy.

Incorrect:

Local Group Policy would have to be edited locally on each laptop.

<http://blogs.technet.com/b/askds/archive/2008/03/19/managing-power-with-group-policy-part-2-or-3.aspx>

Managing Power with Group Policy: Part 2 of 3



C:\Users\Chaudhry\Desktop\1.jpg

Another related policy setting is Specify the System Sleep Timeout, only the value entered (in seconds) indicates how much idle time elapses before Windows enters sleep mode.

Further Information:

Put the Laptops into an OU.

Create an appropriate GPO.

Link the GPO to the OU.

Question No : 11 HOTSPOT

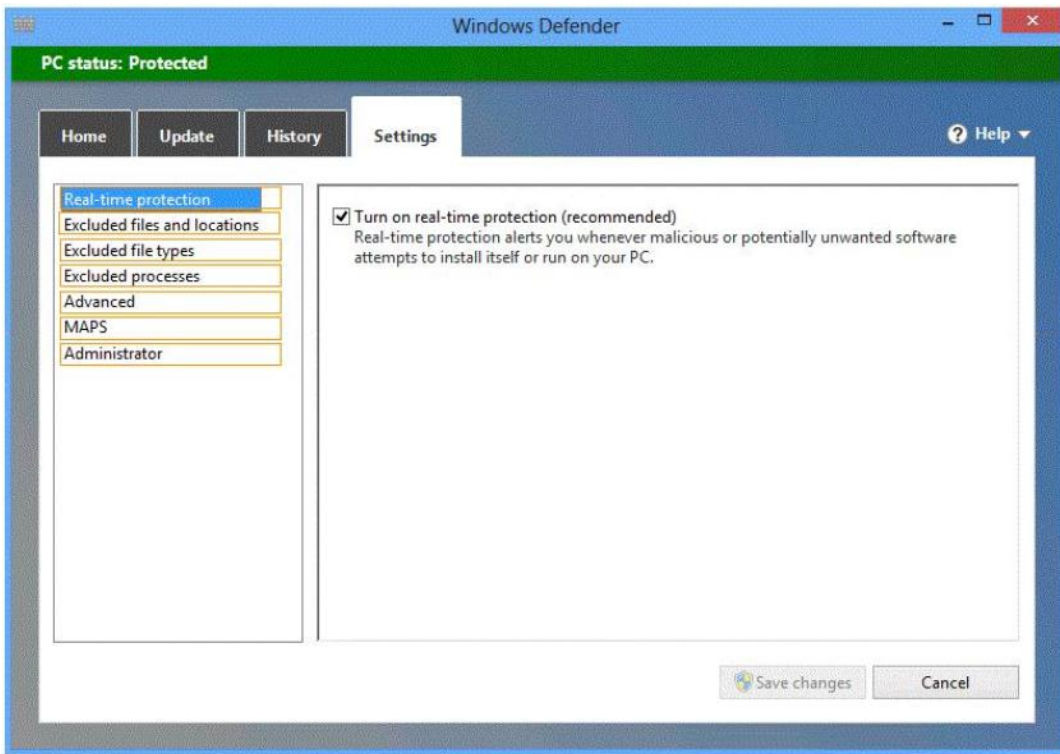
You have computers that run Windows 8 Pro and are configured as a workgroup. Each computer is scheduled to run a Windows Defender full scan every morning at 07:00.

Users report that they are unable to view previous instances of detected malware when they arrive to work.

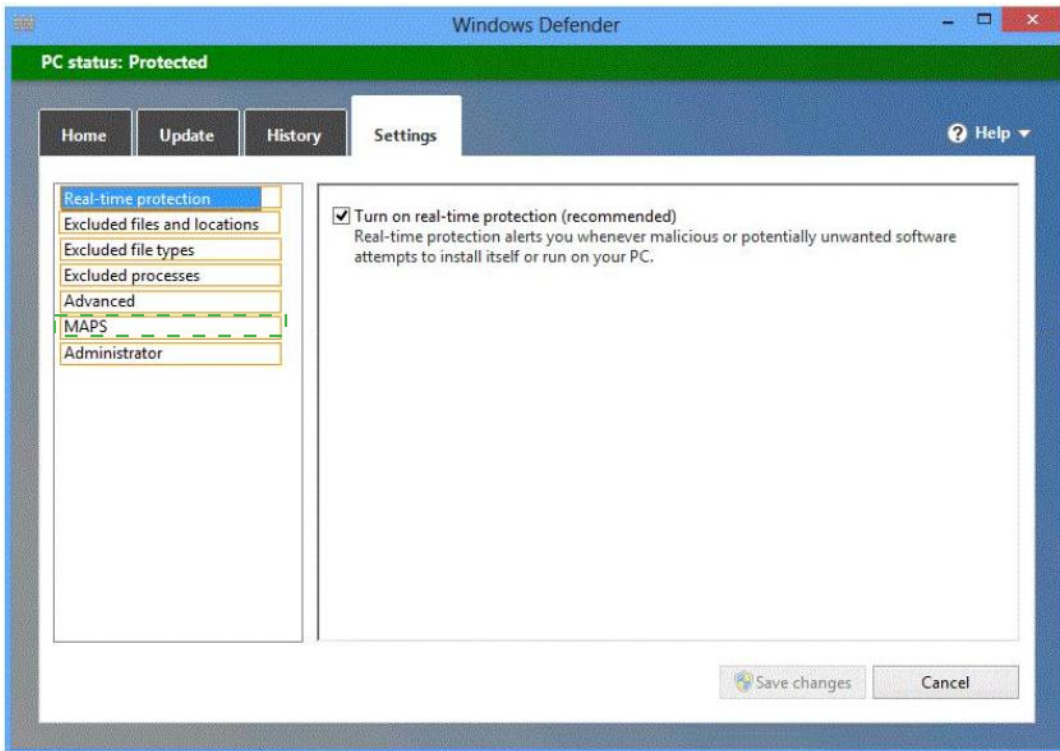
You need to ensure that all users can see previous instances of detected malware in Windows Defender.

Which option on the Settings tab should you select? (To answer, select the appropriate option in the answer area.)

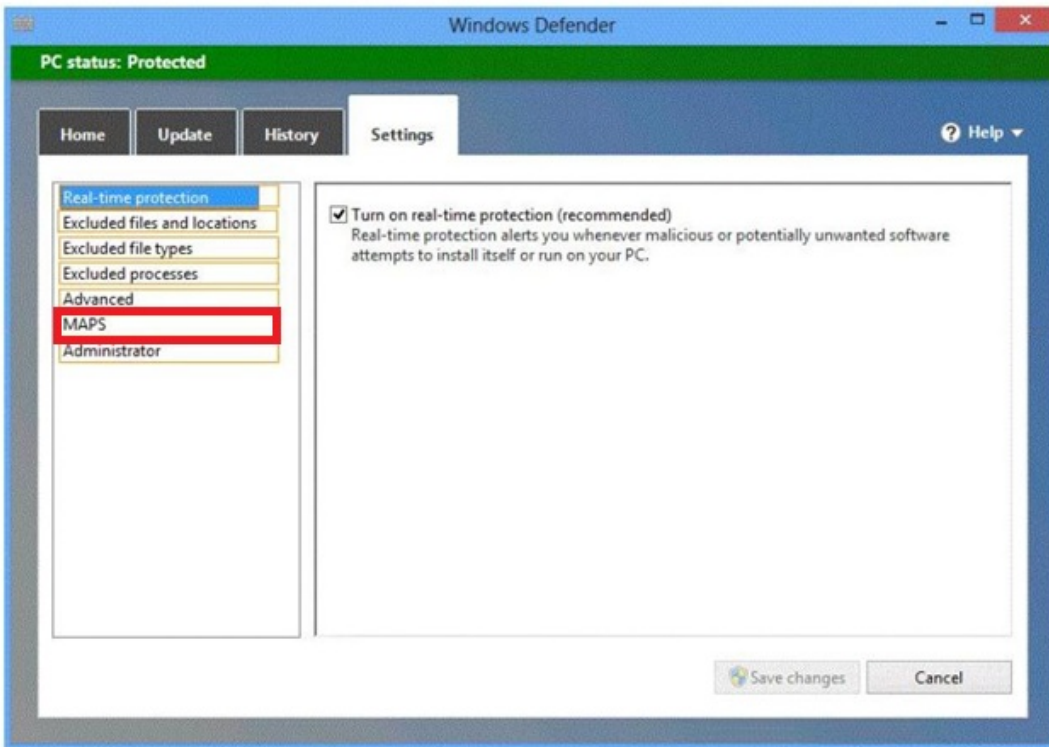
Dumps with VCE and PDF (+Free VCE Software)



Answer:



Explanation:



The MAP Toolkit is used for multi-product assessment and planning. It assesses a network environment using agentless data collection technologies to gather inventory and performance information. Then provides assessment reports to aid organizations with their IT infrastructure planning.

The main areas of planning covered by MAP:

Migration Planning

Consolidation/Virtualization

Private/Public Cloud Planning

Software Usage Tracking

<http://social.technet.microsoft.com/wiki/contents/articles/15142.map-software-usage-tracking.aspx>

Real-Time Protection (RTP) is a feature of Windows Defender, running in the context of the logged-on user, that monitors the registry and file system on the computer by using agents that monitor auto-start extensibility points (ASEP).

<http://technet.microsoft.com/en-us/library/dd363904%28v=WS.10%29.aspx>

Question No : 12 DRAG DROP

You administer computers that run windows 7 and Windows 8. You run an application that saves files that contain local settings unique to each user.

You want to allow users to synchronize settings for an application to any enterprise computer when they log on to the enterprise computer.

You need to implement a solution that will move a user's settings files to any computer. You also need to ensure that you can roll back the changes if necessary.

Which required task or tasks should you perform with each approach? (To answer, drag the appropriate required task to the corresponding approach. Each required task may be used once, more than once, or not at all. You may need to drag the split bar between panes or scroll to view content.)

Required Task	Approach
Create a settings location template.	Generator
Place the settings location template.	Template Catalog Path
Enable Folder Redirection.	Microsoft Desktop Optimization Pack (MDOP)
Deploy the User Experience Virtualization (UE-V) Agent.	

Answer:

Required Task	Approach
Create a settings location template.	Generator
Place the settings location template.	Template Catalog Path
Enable Folder Redirection.	Microsoft Desktop Optimization Pack (MDOP)
Deploy the User Experience Virtualization (UE-V) Agent.	

Explanation:



Note:

* Microsoft User Experience Virtualization (UE-V) uses settings location templates to roam application settings between user computers. Some standard settings location templates are included with User Experience Virtualization. You can also create, edit, or validate custom settings location templates with the UE-V Generator.

Settings template catalog

The User Experience Virtualization settings template catalog is a folder path on UE-V computers or a Server Message Block (SMB) network share that stores all the custom settings location templates. The UE-V agent retrieves new or updated templates from this location. The UE-V agent checks this location once each day and updates its synchronization behavior based on the templates in this folder. Templates that were added or updated in this folder since the last time that the folder was checked are registered by the UE-V agent. The UE-V agent deregisters templates that are removed from this folder. By default, templates are registered and unregistered one time per day at 3:30 A.M. local time by the task scheduler.

The Microsoft Desktop Optimization Pack (MDOP) is a suite of technologies available as a subscription for Software Assurance customers. MDOP virtualization technologies help personalize the user experience, simplify application deployment, and improve application compatibility with the Windows operating system (UE-V/App-V/MED-V). Additionally, MDOP helps manage, monitor, and deploy key Windows features (MBAM/AGPM). Using MDOP shifts desktop repair from reactive to proactive, saving time and removing challenges associated with troubleshooting and repairing system failures (DaRT).

Question No : 13

A company has 100 client computers that run various editions of Windows 7. The company plans to upgrade or replace computers so that all client computers run an edition of Windows 8.1.

The company plans to use the following programs and features on the Windows 8 computers:

- ✍ 32-bit and 64-bit software
- ✍ Desktop apps
- ✍ Windows Media Player
- ✍ Storage Spaces

You need to identify the installation or upgrade paths that support the programs and features.

Which three paths meet the requirements? (Each correct answer presents a complete solution. Choose three.)

- A. Purchase hardware with Windows RT pre-installed.
- B. Perform a clean installation of Windows RT.
- C. Perform a clean installation of Windows 8.1 Pro.
- D. Perform a clean installation of Windows 8.1.
- E. Upgrade from Windows 7 Enterprise to Windows 8.1 Enterprise.

Answer: C,D,E

Explanation:

<http://www.microsoft.com/en-us/windows/enterprise/products-and-technologies/windows-8-1/compare/default.aspx>

Compare Windows 8.1 Editions

Question No : 14

You plan to purchase new Windows 8.1 tablets for your company network.

You need to ensure that tablet users are able to use the Windows 8.1 Snap feature.

Which hardware specifications should you meet in choosing tablets?

- A. Monitor that supports at least five simultaneous touches
- B. Monitor and video adapter that support a minimum screen resolution of 1024 x 768
- C. Monitor and video adapter that support a minimum screen resolution of 1366 x 768
- D. Monitor that supports at least three simultaneous touches

Answer: D

Question No : 15

A computer runs Windows 8.1. You install an application by running an .msi file.

You need to apply a patch to the application.

Which command should you run?

- A. `msiexec /p "C:\MyPatch.msp"`
- B. `msiexec /x T:\MyPatch.msp'`
- C. `dism /Online /add-package:C:\MyPatch.msp`
- D. `dism /get-AppPatches /get-PackageInfo:C:\MyPatch.msp`

Answer: A

Question No : 16

A company has Windows 8.1 client computers. The company develops a Windows Store app but does not publish it to the Windows Store.

You need to sideload the Windows Store app on all client computers.

Which two actions should you perform? (Each correct answer presents part of the solution. Choose two.)

- A. Run the `get-appxpackage` Windows PowerShell cmdlet.
- B. Run the `add-appxpackage` Windows PowerShell cmdlet.
- C. Enable the Allow all trusted applications to install Group Policy setting.
- D. Enable the Allow installation of desktop items Group Policy setting.
- E. Run the `msiexec` command.

Answer: B,C

Explanation:

<http://technet.microsoft.com/en-us/library/hh856048.aspx>

Add-AppxPackage

The `Add-AppxPackage` cmdlet adds a signed app package (.appx) to a user account. Use the `DependencyPath` parameter to add all other packages that are required for the installation of the app package.

You can use the `Register` parameter to install from a folder of unpackaged files during development of Windows® Store apps.

To update an already installed package, the new package must have the same package family name.

<http://technet.microsoft.com/en-US/windows/jj874388.aspx>

Try It Out: Sideload Windows Store Apps

By now, you are familiar with Windows Store apps. There are some pretty cool ones

available in the store, and publishers are adding more every week. A great thing about Windows Store apps is they are super simple to install (and uninstall). But what about line of business (LOB) apps? You probably do not want to publish them through the Windows Store since that would make them publically available. Instead, you can sideload LOB apps. Sideload simply means installing a Windows Store app without publishing it in and downloading it from the store. You install it directly.

Verify the Requirements

There are a small number of requirements computers must meet to sideload Windows Store apps on them. We will start with computers running Windows 8 Enterprise:

The computer running Windows 8 Enterprise must be joined to the domain.

You must enable the "Allow all trusted apps to install" Group Policy setting.

The app must be signed by a \ certificate that is chained to a trusted root certificate.

Further Information:

<http://technet.microsoft.com/en-us/library/hh856044.aspx>

Get-AppxPackage

The Get-AppxPackage cmdlet gets a list of the app packages (.appx) that are installed in a user profile.

To get the list of packages for a user profile other than the profile for the current user, you must run this command by using administrator permissions.

<http://www.advancedinstaller.com/user-guide/msiexec.html>

Msiexec.exe Command Line

The Windows Installer technology uses Msiexec.exe for installing MSI and MSP packages.

Question No : 17

Your network contains an Active Directory domain and a subscription to Microsoft Office 365.

Users discover that they must change their Active Directory password more frequently than their Office 365 password.

You need to ensure that the password policies for Office 365 and for Active Directory are the same.

What should you do?

- A. From the Office 365 portal, under Subscriptions, click Manage.
- B. From the Windows Azure Active Directory Module for Windows PowerShell, run Set-MsolUserPassword.
- C. From the Office 365 portal, under Management, click Users.
- D. From the Office 365 portal, under Management, click Domains.

Answer: C

Explanation: In the Office 365 portal, click Admin > Users (under Management in the navigation pane). On the Users page, select a user, and then click Edit.

Note:

* Some of the options can be managed by using the Office365 Web interface and some task only by using PowerShell.

* Office 365 users Password management verses the “Standard” Domain Active directory is a little bit restricted. For example: configure password policy parameters such as - Enforce password history, Minimum password length, Password must meet complexity requirements cannot be configured by the office 365 administrator. At the current time, the options that related to Office 365 users Password management are: reset the user password and setting the number of maximum number of days or password expiration (the default is 90 days).

<http://technet.microsoft.com/en-us/library/hh531569.aspx>

Question No : 18

You are a systems administrator for your company. The company has employees who work remotely by using a virtual private network (VPN) connection from their computers, which run Windows 8 Pro. These employees use an application to access the company intranet database servers. The company recently decided to distribute the latest version of the application through using a public cloud.

Some users report that every time they try to download the application by using Internet Explorer, they receive a warning message that indicates the application could harm their computer.

You need to recommend a solution that prevents this warning message from appearing, without compromising the security protection of the computers.

What should you do?

- A. Publish the application through a public file transfer protocol (FTP) site.
- B. Publish the application through an intranet web site.
- C. Instruct employees to disable the SmartScreen Filter from within the Internet Explorer settings.
- D. Publish the application to Windows Store.

Answer: B

Explanation: **Intranet** is the generic term for a collection of private computer networks within an organization. An intranet uses network technologies as a tool to facilitate communication between people or work groups to improve the data sharing capability and overall knowledge base of an organization's employees.

Intranets utilize standard network hardware and software technologies like Ethernet, Wi-Fi, TCP/IP, Web browsers and Web servers. An organization's intranet typically includes Internet access but is *firewalled* so that its computers cannot be reached directly from the outside.

http://compnetworking.about.com/cs/intranets/g/bldef_intranet.htm

<http://www.dynamicwebs.com.au/tutorials/ftp.htm>

<http://msdn.microsoft.com/en-us/library/windows/apps/xaml/hh974576.aspx>

Question No : 19

A company plans to deploy Windows 8.1 to 100 client computers. Each client computer has 8 GB of memory. You have the following requirements:

- ✍ Ensure that the operating system fully utilizes the available memory.
- ✍ Ensure that the operating system can be activated by using a Key Management Service (KMS) client setup key.
- ✍ Minimize the operating system space requirements.

You need to identify the appropriate edition of Windows 8.1 to install on the client computers.

Which edition should you install?

- A. Windows 8.1 Enterprise 32-bit
- B. Windows 8.1 Enterprise 64-bit
- C. Windows 8.1 32-bit
- D. Windows 8.1 Pro 32-bit

- E. Windows 8.1 64-bit
- F. Windows 8.1 Pro 64-bit

Answer: B

Question No : 20

A company has Windows 8.1 client computers. Finance department employees store files in the C:\Finance directory. File History is on.

A Finance department employee attempts to restore a file to a previous version by using File History. The file is not available to restore.

You need to establish why the file history is not available and ensure that it is available in the future.

Which two actions should you perform? (Each correct answer presents part of the solution. Choose two.)

- A. Set the Protection Settings for drive C to On.
- B. Review the File History backup log.
- C. Restore the data files from the Previous Versions tab located in the folder properties.
- D. Move the file into a library.

Answer: B,D

Question No : 21

Your company has a main office and a branch office. Each office contains several servers that run Windows Server 2012.

You need to configure BranchCache for the client computers in the branch office. The solution must ensure that all of the cached content is in a central location.

What should you run on each client computer?

- A. The Enable-BCHostedServer cmdlet

Microsoft Exams List

70-246 Dump PDF VCE	70-485 Dump PDF VCE	70-742 Dump PDF VCE	98-366 Dump PDF VCE
70-247 Dump PDF VCE	70-486 Dump PDF VCE	70-743 Dump PDF VCE	98-367 Dump PDF VCE
70-331 Dump PDF VCE	70-487 Dump PDF VCE	70-744 Dump PDF VCE	98-368 Dump PDF VCE
70-332 Dump PDF VCE	70-488 Dump PDF VCE	70-761 Dump PDF VCE	98-369 Dump PDF VCE
70-333 Dump PDF VCE	70-489 Dump PDF VCE	70-762 Dump PDF VCE	98-372 Dump PDF VCE
70-334 Dump PDF VCE	70-490 Dump PDF VCE	70-765 Dump PDF VCE	98-373 Dump PDF VCE
70-339 Dump PDF VCE	70-491 Dump PDF VCE	70-768 Dump PDF VCE	98-374 Dump PDF VCE
70-341 Dump PDF VCE	70-492 Dump PDF VCE	70-980 Dump PDF VCE	98-375 Dump PDF VCE
70-342 Dump PDF VCE	70-494 Dump PDF VCE	70-981 Dump PDF VCE	98-379 Dump PDF VCE
70-345 Dump PDF VCE	70-496 Dump PDF VCE	70-982 Dump PDF VCE	MB2-700 Dump PDF VCE
70-346 Dump PDF VCE	70-497 Dump PDF VCE	74-343 Dump PDF VCE	MB2-701 Dump PDF VCE
70-347 Dump PDF VCE	70-498 Dump PDF VCE	74-344 Dump PDF VCE	MB2-702 Dump PDF VCE
70-348 Dump PDF VCE	70-499 Dump PDF VCE	74-409 Dump PDF VCE	MB2-703 Dump PDF VCE
70-354 Dump PDF VCE	70-517 Dump PDF VCE	74-678 Dump PDF VCE	MB2-704 Dump PDF VCE
70-383 Dump PDF VCE	70-532 Dump PDF VCE	74-697 Dump PDF VCE	MB2-707 Dump PDF VCE
70-384 Dump PDF VCE	70-533 Dump PDF VCE	77-420 Dump PDF VCE	MB2-710 Dump PDF VCE
70-385 Dump PDF VCE	70-534 Dump PDF VCE	77-427 Dump PDF VCE	MB2-711 Dump PDF VCE
70-410 Dump PDF VCE	70-640 Dump PDF VCE	77-600 Dump PDF VCE	MB2-712 Dump PDF VCE
70-411 Dump PDF VCE	70-642 Dump PDF VCE	77-601 Dump PDF VCE	MB2-713 Dump PDF VCE
70-412 Dump PDF VCE	70-646 Dump PDF VCE	77-602 Dump PDF VCE	MB2-714 Dump PDF VCE
70-413 Dump PDF VCE	70-673 Dump PDF VCE	77-603 Dump PDF VCE	MB2-715 Dump PDF VCE
70-414 Dump PDF VCE	70-680 Dump PDF VCE	77-604 Dump PDF VCE	MB2-716 Dump PDF VCE
70-417 Dump PDF VCE	70-681 Dump PDF VCE	77-605 Dump PDF VCE	MB2-717 Dump PDF VCE
70-461 Dump PDF VCE	70-682 Dump PDF VCE	77-881 Dump PDF VCE	MB2-718 Dump PDF VCE
70-462 Dump PDF VCE	70-684 Dump PDF VCE	77-882 Dump PDF VCE	MB5-705 Dump PDF VCE
70-463 Dump PDF VCE	70-685 Dump PDF VCE	77-883 Dump PDF VCE	MB6-700 Dump PDF VCE
70-464 Dump PDF VCE	70-686 Dump PDF VCE	77-884 Dump PDF VCE	MB6-701 Dump PDF VCE
70-465 Dump PDF VCE	70-687 Dump PDF VCE	77-885 Dump PDF VCE	MB6-702 Dump PDF VCE
70-466 Dump PDF VCE	70-688 Dump PDF VCE	77-886 Dump PDF VCE	MB6-703 Dump PDF VCE
70-467 Dump PDF VCE	70-689 Dump PDF VCE	77-887 Dump PDF VCE	MB6-704 Dump PDF VCE
70-469 Dump PDF VCE	70-692 Dump PDF VCE	77-888 Dump PDF VCE	MB6-705 Dump PDF VCE
70-470 Dump PDF VCE	70-695 Dump PDF VCE	77-891 Dump PDF VCE	MB6-884 Dump PDF VCE
70-473 Dump PDF VCE	70-696 Dump PDF VCE	98-349 Dump PDF VCE	MB6-885 Dump PDF VCE
70-480 Dump PDF VCE	70-697 Dump PDF VCE	98-361 Dump PDF VCE	MB6-886 Dump PDF VCE
70-481 Dump PDF VCE	70-698 Dump PDF VCE	98-362 Dump PDF VCE	MB6-889 Dump PDF VCE
70-482 Dump PDF VCE	70-734 Dump PDF VCE	98-363 Dump PDF VCE	MB6-890 Dump PDF VCE
70-483 Dump PDF VCE	70-740 Dump PDF VCE	98-364 Dump PDF VCE	MB6-892 Dump PDF VCE
70-484 Dump PDF VCE	70-741 Dump PDF VCE	98-365 Dump PDF VCE	MB6-893 Dump PDF VCE

Cisco Exams List

010-151 Dump PDF VCE	350-018 Dump PDF VCE	642-737 Dump PDF VCE	650-667 Dump PDF VCE
100-105 Dump PDF VCE	352-001 Dump PDF VCE	642-742 Dump PDF VCE	650-669 Dump PDF VCE
200-001 Dump PDF VCE	400-051 Dump PDF VCE	642-883 Dump PDF VCE	650-752 Dump PDF VCE
200-105 Dump PDF VCE	400-101 Dump PDF VCE	642-885 Dump PDF VCE	650-756 Dump PDF VCE
200-120 Dump PDF VCE	400-151 Dump PDF VCE	642-887 Dump PDF VCE	650-968 Dump PDF VCE
200-125 Dump PDF VCE	400-201 Dump PDF VCE	642-889 Dump PDF VCE	700-001 Dump PDF VCE
200-150 Dump PDF VCE	400-251 Dump PDF VCE	642-980 Dump PDF VCE	700-037 Dump PDF VCE
200-155 Dump PDF VCE	400-351 Dump PDF VCE	642-996 Dump PDF VCE	700-038 Dump PDF VCE
200-310 Dump PDF VCE	500-006 Dump PDF VCE	642-997 Dump PDF VCE	700-039 Dump PDF VCE
200-355 Dump PDF VCE	500-007 Dump PDF VCE	642-998 Dump PDF VCE	700-101 Dump PDF VCE
200-401 Dump PDF VCE	500-051 Dump PDF VCE	642-999 Dump PDF VCE	700-104 Dump PDF VCE
200-601 Dump PDF VCE	500-052 Dump PDF VCE	644-066 Dump PDF VCE	700-201 Dump PDF VCE
210-060 Dump PDF VCE	500-170 Dump PDF VCE	644-068 Dump PDF VCE	700-205 Dump PDF VCE
210-065 Dump PDF VCE	500-201 Dump PDF VCE	644-906 Dump PDF VCE	700-260 Dump PDF VCE
210-250 Dump PDF VCE	500-202 Dump PDF VCE	646-048 Dump PDF VCE	700-270 Dump PDF VCE
210-255 Dump PDF VCE	500-254 Dump PDF VCE	646-365 Dump PDF VCE	700-280 Dump PDF VCE
210-260 Dump PDF VCE	500-258 Dump PDF VCE	646-580 Dump PDF VCE	700-281 Dump PDF VCE
210-451 Dump PDF VCE	500-260 Dump PDF VCE	646-671 Dump PDF VCE	700-295 Dump PDF VCE
210-455 Dump PDF VCE	500-265 Dump PDF VCE	646-985 Dump PDF VCE	700-501 Dump PDF VCE
300-070 Dump PDF VCE	500-275 Dump PDF VCE	648-232 Dump PDF VCE	700-505 Dump PDF VCE
300-075 Dump PDF VCE	500-280 Dump PDF VCE	648-238 Dump PDF VCE	700-601 Dump PDF VCE
300-080 Dump PDF VCE	500-285 Dump PDF VCE	648-244 Dump PDF VCE	700-602 Dump PDF VCE
300-085 Dump PDF VCE	500-290 Dump PDF VCE	648-247 Dump PDF VCE	700-603 Dump PDF VCE
300-101 Dump PDF VCE	500-801 Dump PDF VCE	648-375 Dump PDF VCE	700-701 Dump PDF VCE
300-115 Dump PDF VCE	600-199 Dump PDF VCE	648-385 Dump PDF VCE	700-702 Dump PDF VCE
300-135 Dump PDF VCE	600-210 Dump PDF VCE	650-032 Dump PDF VCE	700-703 Dump PDF VCE
300-160 Dump PDF VCE	600-211 Dump PDF VCE	650-042 Dump PDF VCE	700-801 Dump PDF VCE
300-165 Dump PDF VCE	600-212 Dump PDF VCE	650-059 Dump PDF VCE	700-802 Dump PDF VCE
300-180 Dump PDF VCE	600-455 Dump PDF VCE	650-082 Dump PDF VCE	700-803 Dump PDF VCE
300-206 Dump PDF VCE	600-460 Dump PDF VCE	650-127 Dump PDF VCE	810-403 Dump PDF VCE
300-207 Dump PDF VCE	600-501 Dump PDF VCE	650-128 Dump PDF VCE	820-424 Dump PDF VCE
300-208 Dump PDF VCE	600-502 Dump PDF VCE	650-148 Dump PDF VCE	840-425 Dump PDF VCE
300-209 Dump PDF VCE	600-503 Dump PDF VCE	650-159 Dump PDF VCE	
300-210 Dump PDF VCE	600-504 Dump PDF VCE	650-281 Dump PDF VCE	
300-320 Dump PDF VCE	640-692 Dump PDF VCE	650-393 Dump PDF VCE	
300-360 Dump PDF VCE	640-875 Dump PDF VCE	650-472 Dump PDF VCE	
300-365 Dump PDF VCE	640-878 Dump PDF VCE	650-474 Dump PDF VCE	
300-370 Dump PDF VCE	640-911 Dump PDF VCE	650-575 Dump PDF VCE	
300-375 Dump PDF VCE	640-916 Dump PDF VCE	650-621 Dump PDF VCE	
300-465 Dump PDF VCE	642-035 Dump PDF VCE	650-663 Dump PDF VCE	
300-470 Dump PDF VCE	642-732 Dump PDF VCE	650-665 Dump PDF VCE	
300-475 Dump PDF VCE	642-747 Dump PDF VCE	650-754 Dump PDF VCE	

HOT EXAMS

Cisco

[100-105 Dumps VCE PDF](#)
[200-105 Dumps VCE PDF](#)
[300-101 Dumps VCE PDF](#)
[300-115 Dumps VCE PDF](#)
[300-135 Dumps VCE PDF](#)
[300-320 Dumps VCE PDF](#)
[400-101 Dumps VCE PDF](#)
[640-911 Dumps VCE PDF](#)
[640-916 Dumps VCE PDF](#)

Microsoft

[70-410 Dumps VCE PDF](#)
[70-411 Dumps VCE PDF](#)
[70-412 Dumps VCE PDF](#)
[70-413 Dumps VCE PDF](#)
[70-414 Dumps VCE PDF](#)
[70-417 Dumps VCE PDF](#)
[70-461 Dumps VCE PDF](#)
[70-462 Dumps VCE PDF](#)
[70-463 Dumps VCE PDF](#)
[70-464 Dumps VCE PDF](#)
[70-465 Dumps VCE PDF](#)
[70-480 Dumps VCE PDF](#)
[70-483 Dumps VCE PDF](#)
[70-486 Dumps VCE PDF](#)
[70-487 Dumps VCE PDF](#)

CompTIA

[220-901 Dumps VCE PDF](#)
[220-902 Dumps VCE PDF](#)
[N10-006 Dumps VCE PDF](#)
[SY0-401 Dumps VCE PDF](#)