



Vendor: Microsoft

Exam Code: 70-741

Exam Name: Networking with Windows Server 2016

Version: Demo

QUESTION 1

You have a server named Host1 that runs Windows Server 2016.

You configure Host1 as a virtualization host and create 20 new virtual machines on Host1.

You need to ensure that all of the virtual machines can connect to the Internet through Host1.

Which three actions should you perform? Each correct answer presents part of the solution.

- A. On a virtual machine, install the Remote Access server role.
- B. From the properties of each virtual machine, enable virtual LAN identification.
- C. From the properties of each virtual machine, connect to the virtual machine switch.
- D. On Host1, configure the network address translation (NAT) network.
- E. On Host1, create an internal virtual machine switch and specify an IP address for the switch.

Correct Answer: CDE

Explanation:

[https://technet.microsoft.com/en-us/library/ee449441\(v=ws.10\).aspx](https://technet.microsoft.com/en-us/library/ee449441(v=ws.10).aspx)

QUESTION 2

Your company has a main office in London and a branch office in Seattle. The offices connect to each other by using a WAN link.

In the London office, you have a Distributed File System (DFS) server named FS1 that contains a folder named Folder1.

In the Seattle office, you have a DFS server named FS2.

All servers run Windows Server 2016.

You configure replication of Folder1 to FS2.

Users in both offices frequently add files in Folder1.

You monitor DFS Replication, and you discover excessive replication over the WAN link during business hours.

You need to reduce the amount of bandwidth used for replication during business hours. The solution must ensure that the users can continue to save content to Folder1.

What should you do?

- A. Modify the quota settings on Folder1 on FS2.
- B. Modify the properties of the replication group.
- C. Configure the copy of Folder1 on FS2 as read-only.
- D. Modify the replicated folder properties of Folder1 on FS1.

Correct Answer: B

QUESTION 3

Note: This question is part of a series of questions that present the same scenario. Each question in the series contains a unique solution that might meet the stated goals. Some question sets might have more than one correct solution, while others might not have a correct solution.

After you answer a question in this sections, you will NOT be able to return to it. As a result, these questions will not appear in the review screen.

You network contains an Active Directory domain named contoso.com. The domain contains a member server named Server1 that runs Windows Server 2016 and has the DNS Server role installed. Automatic scavenging of state records is enabled and the scavenging period is set to 10 days.

All client computers dynamically register their names in the contoso.com DNS zone on Server1.

You discover that the names of multiple client computers that were removed from the network several weeks ago can still be resolved.

You need to configure Server1 to automatically remove the records of the client computers that have been offline for more than 10 days.

Solution: You run the dnscmd.exe command and specify the /AgeAllRecords parameter for the zone.

Does this meet the goal?

- A. Yes
- B. No

Correct Answer: B

Explanation:

[https://technet.microsoft.com/en-us/library/cc772069\(v=ws.11\).aspx](https://technet.microsoft.com/en-us/library/cc772069(v=ws.11).aspx)

QUESTION 4

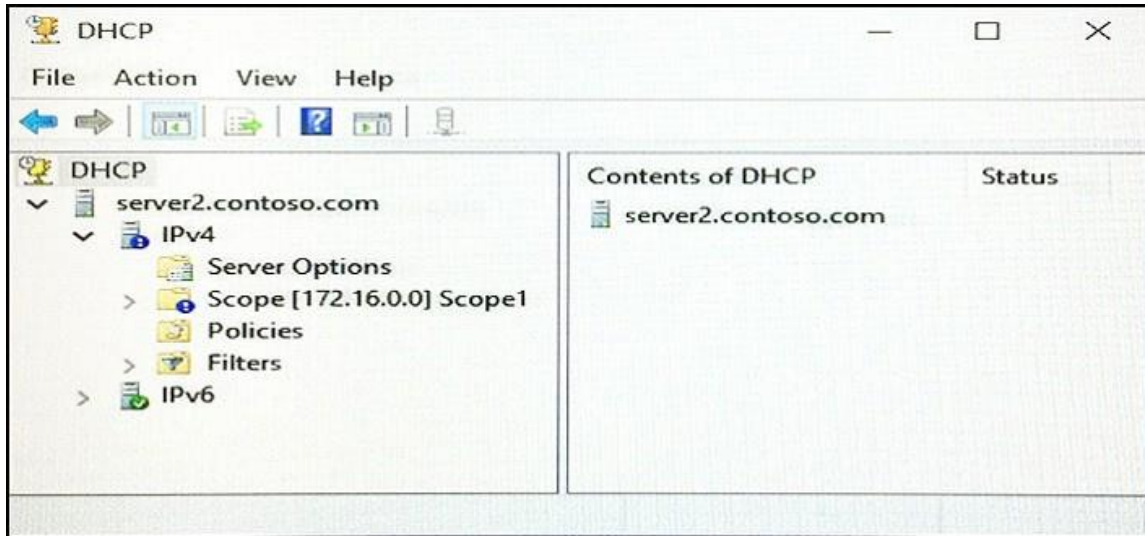
Note: This question is part of a series of questions that present the same scenario. Each question in the series contains a unique solution that might meet the stated goals. Some question sets might have more than one correct solution, while others might not have a correct solution.

After you answer a question in this sections, you will NOT be able to return to it. As a result, these questions will not appear in the review screen.

You network contains an Active Directory domain named contoso.com. The domain contains a DHCP server named Server2 than runs Windows Server 2016.

Users report that their client computers fail to obtain an IP address.

You open the DHCP console as shown in the Exhibit. (Click the Exhibit button.)



Scope1 has an address range of 172.16.0.10 to 172.16.0.100 and a prefix length of 23 bits.

You need to ensure that all of the client computers on the network can obtain an IP address from Server2.

Solution: You run the Set-DhcpServerv4Scope cmdlet.

Does this meet the goal?

- A. Yes
- B. No

Correct Answer: A

Explanation:

<https://technet.microsoft.com/itpro/powershell/windows/dhcp-server/set-dhcpserverv4scope>

QUESTION 5

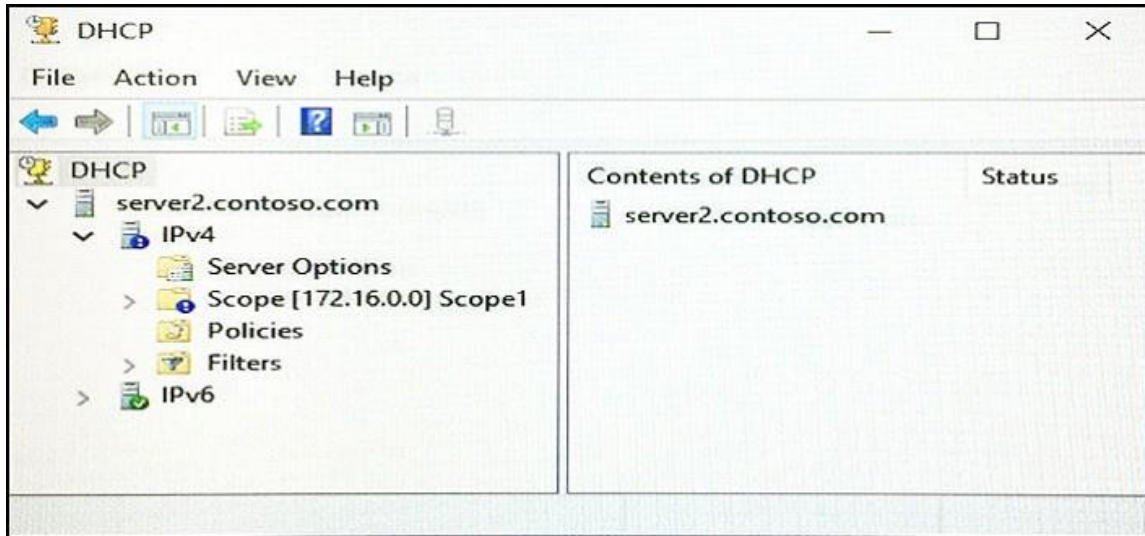
Note: This question is part of a series of questions that present the same scenario. Each question in the series contains a unique solution that might meet the stated goals. Some question sets might have more than one correct solution, while others might not have a correct solution.

After you answer a question in this sections, you will NOT be able to return to it. As a result, these questions will not appear in the review screen.

Your network contains an Active Directory domain named contoso.com. The domain contains a DHCP server named Server2 that runs Windows Server 2016.

Users report that their client computers fail to obtain an IP address.

You open the DHCP console as shown in the Exhibit. (Click the Exhibit button.)



Scope1 has an address range of 172.16.0.10 to 172.16.0.100 and a prefix length of 23 bits.

You need to ensure that all of the client computers on the network can obtain an IP address from Server2.

Solution: You run the Repair-DhcpServerv4IPRecord cmdlet.

Does this meet the goal?

- A. Yes
- B. No

Correct Answer: B

Explanation:

<https://technet.microsoft.com/itpro/powershell/windows/dhcp-server/set-dhcpserverv4scope>

QUESTION 6

HOTSPOT

Your network contains an Active Directory domain named contoso.com. The domain contains three servers named Server1, Server2, and Server3 that run Windows Server 2016.

Server1 has IP Address Management (IPAM) installed. Server2 and Server3 have the DHCP Server role installed and have several DHCP scopes configured. The IPAM server retrieves data from Server2 and Server3.

A domain user named User1 is a member of the groups shown in the following table.

Server name	Group
Server2	DHCP Administrators
Server3	DHCP Users

On Server1, you create a security policy for User1. The policy grants the IPAM DHCP Scope

Administrator Role with the \Global access scope to the user.

Which actions can User1 perform?

To answer, select the appropriate options in the answer area.

Answer Area

From Server Manager on Server1, User1 can modify the description of the DHCP scopes:

	▼
On Server2 only	
On Server3 only	
On both Server2 and Server3	

From Server Manager on Server1, User1 can create a new DHCP scope:

	▼
On Server2 only	
On Server3 only	
On both Server2 and Server3	

Correct Answer:

Answer Area

From Server Manager on Server1, User1 can modify the description of the DHCP scopes:

	▼
On Server2 only	
On Server3 only	
On both Server2 and Server3	

From Server Manager on Server1, User1 can create a new DHCP scope:

	▼
On Server2 only	
On Server3 only	
On both Server2 and Server3	

QUESTION 7

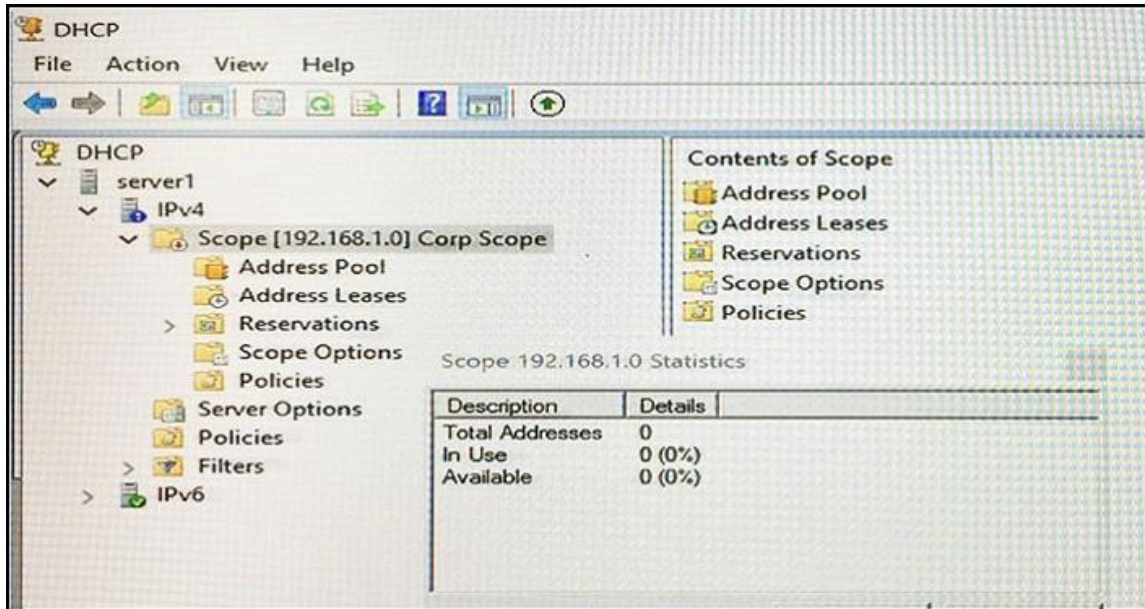
Note: This question is part of a series of questions that present the same scenario. Each question in the series contains a unique solution that might meet the stated goals. Some question sets might have more than one correct solution, while others might not have a correct solution.

After you answer a question in this sections, you will NOT be able to return to it. As a result, these questions will not appear in the review screen.

Your network contains an Active Directory domain named contoso.com. The domain contains a DHCP server named Server1. All client computers run Windows 10 and are configured as DHCP clients.

Your helpdesk received calls today from users who failed to access the network from their Windows 10 computer.

You open the DHCP console as shown in the exhibit. (Click the Exhibit button.)



You need to ensure that all of the Windows 10 computers can receive a DHCP lease.

Solution: You start the DHCP Server service.

Does this meet the goal?

- A. Yes
- B. No

Correct Answer: B

Explanation:

[https://technet.microsoft.com/en-us/library/dd183581\(v=ws.10\).aspx](https://technet.microsoft.com/en-us/library/dd183581(v=ws.10).aspx)

QUESTION 8

HOTSPOT

You have a network address translation (NAT) server named NAT1 that has an external IP address of 131.107.50.1 and an internal IP address of 10.0.0.1.

You deploy a new server named Web1 that has an IP address of 10.0.0.211.

A remote server named app.fabrikam.com has an IP address of 131.107.1.232.

You need to make Web1 accessible to app.fabrikam.com through NAT1.

What command should you run from NAT1?

To answer, select the appropriate options in the answer area.

Answer Area

	-ExternalIPAddress	-InternalIPAddress
Add-NetNatExternalAddress	10.0.0.211	10.0.0.1
Add-NetNatStaticMapping	131.107.1.232	10.0.0.211
	131.107.50.1	131.107.1.232
		131.107.50.1

Correct Answer:

Answer Area

	-ExternalIPAddress	-InternalIPAddress
Add-NetNatExternalAddress	10.0.0.211	10.0.0.1
Add-NetNatStaticMapping	131.107.1.232	10.0.0.211
	131.107.50.1	131.107.1.232
		131.107.50.1

QUESTION 9

Note: This question is part of a series of questions that use the same or similar answer choices. An answer choice may be correct for more than one question in the series. Each question is independent of the other questions in this series. Information and details provided in a question apply only to that question.

You have a DHCP server named Server1 that has three network cards. Each network card is configured to use a static IP address. Each network card connects to a different network segment.

Server1 has an IPv4 scope named Scope1.

You need to ensure that Server1 only uses one network card when leasing IP addresses in Scope1.

What should you do?

- A. From the properties of Scope1, modify the Conflict detection attempts setting.
- B. From the properties of Scope1, configure Name Protection.
- C. From the properties of IPv4, configure the bindings.
- D. From IPv4, create a new filter.
- E. From the properties of Scope1, create an exclusion range.
- F. From IPv4, run the DHCP Policy Configuration Wizard.
- G. From Control Panel, modify the properties of Ethernet.
- H. From Scope1, create a reservation.

Correct Answer: C

Explanation:

[https://technet.microsoft.com/en-us/library/cc770650\(v=ws.11\).aspx](https://technet.microsoft.com/en-us/library/cc770650(v=ws.11).aspx)