



Vendor: Microsoft

Exam Code: 98-364

Exam Name: Database Administration Fundamentals

Version: Demo

QUESTION 1

John works as a Database Administrator for Bluewell Inc. The company has a SQL Server database. A table in the database has a candidate key and an attribute that is not a constituent of the candidate key. The non-key attribute depends upon the whole of the candidate key rather than just a part of it. Which of the following normal forms is represented in the scenario?

- A. 4 NF
- B. 2 NF
- C. 1 NF
- D. 3 NF

Correct Answer: B

QUESTION 2

You work as a Database Designer for DataOneWorld Inc. The company has a SQL Server database. You are assigned the task of creating a data model of an enterprise based on a specific data model. The model to be created should be independent of a particular DBMS. Which of the following database designs will help you accomplish the task?

- A. Logical database design
- B. Conceptual database design
- C. Physical database design
- D. Application design

Correct Answer: A

QUESTION 3

Which of the following steps in database planning helps to determine the requirements of the database through interviewing?

- A. Gathering information
- B. Identifying the relationship between objects
- C. Identify the objects
- D. Identifying the type of information for each objects
- E. Modeling the object

Correct Answer: A

QUESTION 4

Consider the case of a fruit juice company. The company manufactures fruit juices and supplies them to wholesalers. The Database Designer creates a table named Production. The code is given below:

1. CREATE Table Production
2. 2.(Fruit_type VarChar,
3. Fruit_name Char(20),
4. Quantity Int(3))

Which of the above-mentioned lines has an error?

- A. Line 3
- B. Line 2
- C. Line 1
- D. Line 4

Correct Answer: B

QUESTION 5

John works as a Database Administrator for DataOneWorld Inc. The company has a SQL Server database. John wants to insert records in a table where the database is structured in a fixed format. Which of the following data models will he use to accomplish the task?

- A. Object relational data model
- B. Entity-Relationship Model
- C. Network data model
- D. Relational model

Correct Answer: D

QUESTION 6

You manage a database named Customers, which includes a table named Orders. The Orders table is frequently queried, but only orders with a sales total of more than \$1000.00 are required in the query. You want to create an index to speed up these types of queries at the same time, ensuring the index is as small as possible. What type of index should you use?

- A. Non-clustered
- B. Filtered
- C. Clustered
- D. XML

Correct Answer: B

QUESTION 7

Which of the following database terms is described in the statement below? "It prevents the current database operation from reading or writing a data item while the data item is being accessed by another operation."

- A. Lock
- B. Encryption
- C. Constraint
- D. Deadlock

Correct Answer: A

QUESTION 8

Your Company is designing and developing a number of databases for a stock exchange. One of the databases will contain highly sensitive data for which high level of security will be required. Although high processing speed is one of the prime requirements of the customer, for this database, security of the data will take priority over the processing speed. It needs to be ensured that even if unauthorized access to the database is obtained, the rogue user is unable to read the data. Which of the following protection techniques will you suggest for this database?

- A. Authentication
- B. Encryption
- C. Native auditing
- D. Integrity controls

Correct Answer: B

QUESTION 9

Which of the following are the main approaches in the database design? Each correct answer represents a complete solution. Choose three.

- A. Top-down approach
- B. Bottom-up approach
- C. Middle approach
- D. Inside-out approach

Correct Answer: ABD

QUESTION 10

You work as a Software Developer for ArchiTech Inc. You plan to create a well-designed database for the company. You implement normalization rules for designing the database. Choose the appropriate normalization rules from the Choose and Reorder window pane.

Select and Place:

Normalization Rules

Rules

- A table in a database should avoid containing nullable columns
- A table in a database should avoid creating candidate keys
- A table in a database should have a unique row identifier
- A table in a database should store information for a single entity
- A table in a database should avoid containing too many columns

Correct Answer:

Normalization Rules

- A table in a database should have a unique row identifier
- A table in a database should store information for a single entity
- A table in a database should avoid containing nullable columns
- A table in a database should not contain repeating values

Rules

- A table in a database should avoid containing too many columns
- A table in a database should avoid creating candidate keys

QUESTION 11

You are a Database Administrator of MySQL database. Few days back, your server crashed. Now, it is up and online. You need to check the integrity of various tables used in the database. You need to issue the CHECK TABLE command. For which of the following tables will this command work? Each correct answer represents a complete solution. Choose two.

- A. FEDERATED
- B. MyISAM
- C. MERGE
- D. InnoDB

Correct Answer: BD

QUESTION 12

Which of the following can be used to populate a table? Each correct answer represents a complete solution. Choose all that apply.

- A. Data Pump
- B. SQL*Loader
- C. INSERT statement
- D. MERGE statement

Correct Answer: CBAD

QUESTION 13

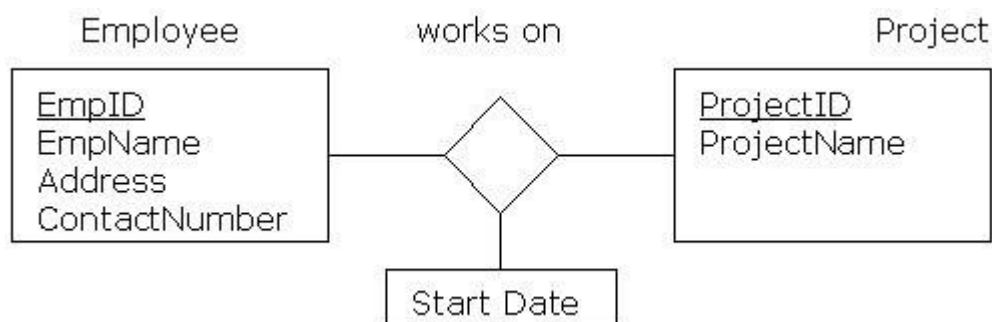
Which of the following statements about external tables is true?

- A. They can have constraints or triggers.
- B. They cannot be written to with DML commands.
- C. They can have indexes.
- D. They cannot be used in joins, views, and subqueries.

Correct Answer: B

QUESTION 14

You work as a Database Designer for SoftTech Inc. You have developed the conceptual design of the database of an organization. Following is the ER-diagram, which you have designed. Now you have to convert the following diagram to a logical model.



Which of the following steps will you take to accomplish the task? Each correct answer represents a part of the solution. Choose all that apply.

- A. Now migrate the Start Date attribute of "works on" relationship to the Project table.
- B. Create two tables, Employee and Project.
- C. Create a primary key for both the tables.
- D. Migrate the primary key of the Employee table to the Project table to maintain referential

integrity between the two tables.

- E. Create three tables, Employee, Project, and Manager.

Correct Answer: BCDA

QUESTION 15

Which of the following values cannot be stored in a character column defined as the primary key of a table?

- A. null
- B. '0'
- C. 'null'
- D. ''

Correct Answer: A

QUESTION 16

Mark works as a Database Administrator for DataOneWorld Inc. Management instructs him to provide an additional security layer to the database to prevent unauthorized viewing of data with the help of an algorithm called cipher. Which of the following will help him to accomplish the task?

- A. Native auditing
- B. Authentication
- C. Encryption
- D. Abstraction

Correct Answer: C

QUESTION 17

Which of the following is a design of the user interface and the application programs that use and process the database?

- A. Application Design
- B. Object Modeling
- C. Database Design
- D. Database Planning

Correct Answer: A

QUESTION 18

Which of the following is used to give a default value to a column if the value for that column is unknown?

- A. Concurrency
- B. DEFAULT constraint
- C. Nested transaction
- D. Transaction

Correct Answer: B

QUESTION 19

Suzanne works as a Database Designer for DataOneWorld Inc. She is assigned the task of decomposing the components of a database, but she has to ensure that all the components are decomposed to only some extent. Which of the following approaches will she use to accomplish the task?

- A. Mixed approach
- B. Inside-out approach
- C. Top-down approach
- D. Bottom-up approach

Correct Answer: A

QUESTION 20

Consider the case of a distance education university. The university has many regional centers across the country. Each regional center has a head known as regional manager. Each regional center has allotted more than one study center in its region. Each regional center has a region code, which is unique and specifies a region. Each study center also has a study center code, which is also unique. What is the relationship between regional center and study center?

- A. One-to-one
- B. One-to-many
- C. There is no relationship.
- D. Many-to-many

Correct Answer: B

QUESTION 21

You work as the Database Administrator for www.company.com. All servers on the www.company.com network run Windows Server 2003 and Windows Server 2000, and all client computers run Windows XP professional and Windows Vista. The www.company.com network area consists of a single Active Directory domain named www.company.com. The www.company.com network contains a Microsoft SQL Server 2005 database server named COMPANY-DB111, which you administer at a regular interval of time. COMPANY-DB111 contains and hosts three databases that support different types of business requirements. The network uses the DBA database that supports internal operations including maintaining data, accounting, and mailing. The network's regular users make use of stored procedures for the data values that need insertion into the tables. The stored procedures used in the network of the company are designed to access SQL variant type parameters and then use the values to build and execute ad hoc query statements that are the part of the SQL statements. During a routine network check, you discover that there are several odd occurrences in the database. The odd occurrences include data deleted from tables and other unauthorized activity. You suspect a user is executing the unauthorized statements through the stored procedures. You are required to stop the unauthorized changes while having least impact on the stored procedures that are in use. Your explanation must use the least administrative effort. What should you do?

- A. The input parameters should be parsed to watch for and block any input including single quotes.
- B. The stored procedures used for the table should be replaced with ad hoc queries.
- C. The stored procedure should be customized to use type-specific and length-restricted parameters.
- D. All data handling activity on the table should be audited and recorded.

Correct Answer: C

QUESTION 22

You work as a Database Administrator for DataOneWorld Inc. Management instructs you to remove an object from the relational database management system. Which of the following statements will you use to accomplish the task?

- A. DROP
- B. SELECT
- C. CREATE
- D. ALTER

Correct Answer: A

QUESTION 23

Which of the following enables a user to use generic methods to access a database and to focus on the coding rather than the syntax for a specific database API?

- A. Abstraction
- B. Database security
- C. Native auditing
- D. Authentication

Correct Answer: A

QUESTION 24

You work as a Database Administrator for InfoTech Inc. The company has a database and they want you to create a design for a database that will support the enterprise's operations and objectives. Which of the following will you use to accomplish the task?

- A. Application design
- B. Database design
- C. Database planning
- D. Requirements collection and analysis

Correct Answer: B

QUESTION 25

Which of the following scripts is used to convert Unix-type zone files into SQL statements, and loads the time zone tables in a mysql database?

- A. mysql_tzinfo_to_sql
- B. mysql_time_to_sql
- C. mysql_timezone_to_sql
- D. mysql_tz_to_sql

Correct Answer: A

QUESTION 26

You work as a Database Designer for Trittech Inc. You are designing a table named Info. The table contains the following attributes:

- Login and Password
- Name
- ContactNumber

- Address

Each new employee joining the company is assigned an E-mail Login and Password. This E-mail Login and Password is used by each employee to access his account on the company's Web site. The value of both the attributes should be unique and cannot be NULL. You design an artificial key EmpID in the Info table to serve as a primary key. Which of the following factors lead you to define an artificial key for use as a primary key in the Info table? Each correct answer represents a part of the solution. Choose all that apply.

- A. The value of the primary key cannot be NULL.
- B. The value of the primary key must be persistent.
- C. The natural key contains highly sensitive data.
- D. The value of the primary key must be unique.

Correct Answer: DABC

QUESTION 27

In addition to taking backups of your databases, you should also backup up files stated below. Which of these files store updates that have been made after the backup was made?

- A. Binary log files
- B. My.ini
- C. My.cnf
- D. Master.info

Correct Answer: A

QUESTION 28

Which of the following is a building working model of a database system?

- A. Prototyping
- B. Bottom-up approach
- C. Conceptual database design
- D. Top-down approach

Correct Answer: A

QUESTION 29

You are the database administrator for a MySQL database server. The network contains new and old (pre-4.1) clients. You configure another database server on the network. You allow the network clients to connect to the new server. Some users complain that when they try to connect to the server, they receive the following error:

ERROR 1251: The client does not support authentication protocol requested by the server; consider upgrading MySQL client.

You do not want to upgrade any client or server right now, and want to enable all clients to connect to the new server successfully. Which of the following steps will you take to resolve the issue?

- A. Run the server with the --secure-auth option.
- B. Run the server with the --old-password option.
- C. Run the server with the --allow-old option.
- D. Run the server with the --enable-old option.

Correct Answer: B

QUESTION 30

Which of the following steps in database planning is used to record an object so that it is represented visually in the system?

- A. Identifying the relationships between objects
- B. Gathering information
- C. Object identification
- D. Object modeling

Correct Answer: D

EnsurePass.com Members Features:

1. Verified Answers researched by industry experts.
2. Q&As are downloadable in PDF and VCE format.
3. 98% success Guarantee and **Money Back** Guarantee.
4. Free updates for **180** Days.
5. **Instant Access to download the Items**

View list of All Exam provided:

<http://www.ensurepass.com/certifications?index=A>

To purchase Lifetime Full Access Membership click here:

<http://www.ensurepass.com/user/register>

Valid Discount Code for 2015: JREH-G1A8-XHC6

To purchase the HOT Microsoft Exams:

<u>Microsoft</u>			
70-243	70-347	70-466	70-515
70-246	70-410	70-467	70-516
70-247	70-411	70-480	70-519
70-321	70-412	70-483	70-583
70-331	70-413	70-484	70-640
70-332	70-414	70-485	70-649
70-336	70-417	70-486	70-668
70-337	70-461	70-487	70-680
70-341	70-462	70-488	70-687
70-342	70-463	70-489	70-688
70-346	70-464	70-513	70-689

